

IMPORTANT INFORMATION

Contents

- 2 x BF4 Sump Flooring
- 1 x BFS2 Joining Strip
- 1 x BFC Connector

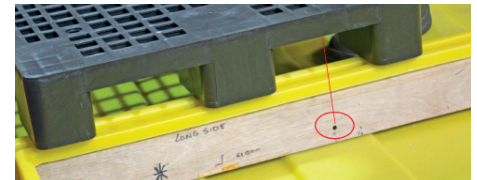
Tools Required

- Drill
- 27mm hole saw
- Measuring tape (or ruler)

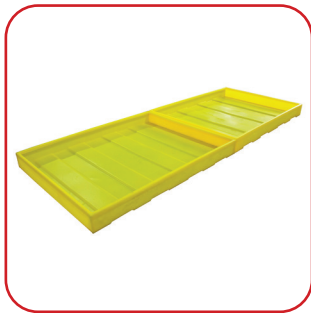
Drill Measurements

- 410mm from the inside edge
- 42mm up from the base

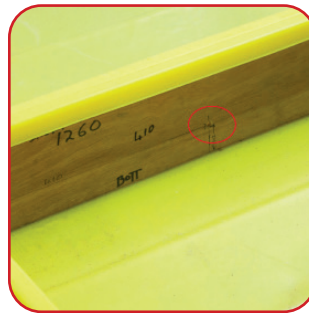
Please note: Please ensure you follow the above drill measurements. If the recommended measurements are not followed, the grid(s) will not fit the base unit due to the grid towers.



INSTRUCTIONS



Step 1
 Lay out the two bases (ensure all grids have been removed)



Step 2
 Use the measuring tape (or ruler) to mark the measurement for drilling



Step 3
 Measure on the inside, from the left-hand side, 410mm from the inside edge, and 42mm up from the base. Once marked, begin drilling



Step 4
 Once drilled, proceed to drill the same holes using the 27mm hole saw



Step 5
 Repeat step 4 on the second base unit that will be connected



Step 6
 Unscrew the nut from the BFC connector (left-handed thread)



Step 7

Remove the nut and the rubber washer from the connector



Step 8

Ensure the two holes and base units are lined up. Insert the connector through the two base units



Step 9

Screw on the rubber washer and nut



Step 10 (Side 1)

Tighten the nuts until the bund walls are firmly together



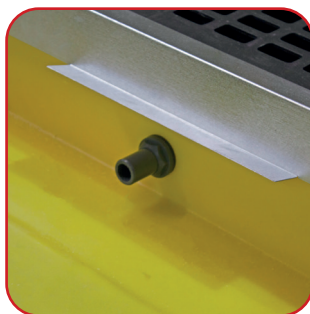
Step 10b (Side 2)

The nut and rubber washer will create a seal. **DO NOT OVERTIGHTEN**



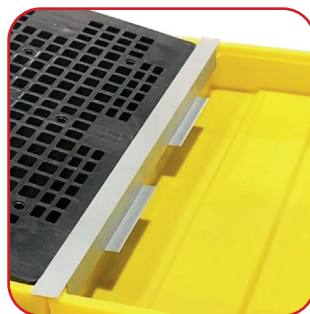
Step 11

Use the BFS2 Joining Strip. Push the strip down to hold the abutting bund walls together



Step 12

Insert all 4 grids



Step 13

The 2 sumps are now connected

