

## IMPORTANT INFORMATION

### Contents

- 1 x BF2 Sump Flooring
- 1 x BF4 Sump Flooring
- 1 x BFS2 Joining Strip
- 1 x BFC Connector

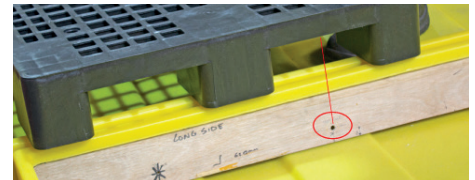
### Tools Required

- Drill
- 27mm hole saw
- Measuring tape (or ruler)

### Drill Measurements

- 410mm from the inside edge
- 42mm up from the base

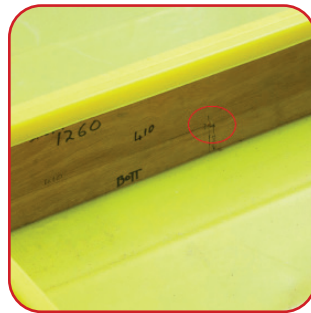
**Please note:** Please ensure you follow the above drill measurements. If the recommended measurements are not followed, the grid(s) will not fit the base unit due to the grid towers.



## INSTRUCTIONS



**Step 1**  
 Lay out the two bases (ensure all grids have been removed)



**Step 2**  
 Use the measuring tape (or ruler) to mark the measurement for drilling



**Step 3**  
 Measure on the inside, from the left-hand side, 410mm from the inside edge, and 42mm up from the base. Once marked, begin drilling



**Step 4**  
 Once drilled, proceed to drill the same holes using the 27mm hole saw



**Step 5**  
 Repeat step 4 on the second base unit that will be connected



**Step 6**  
 Unscrew the nut from the BFC connector (left-handed thread)



**Step 7**

Remove the nut and the rubber washer from the connector



**Step 8**

Ensure the two holes and base units are lined up. Insert the connector through the two base units



**Step 9**

Screw on the rubber washer and nut



**Step 10 (Side 1)**

Tighten the nuts until the bund walls are firmly together



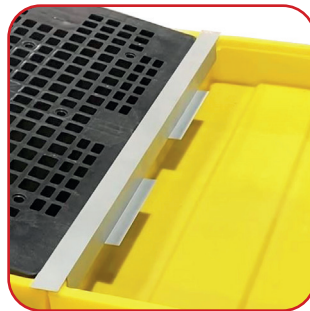
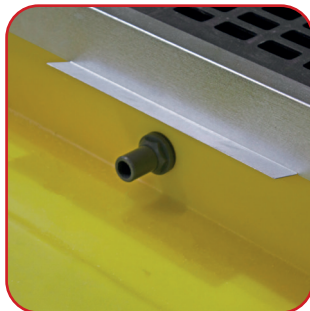
**Step 10b (Side 2)**

The nut and rubber washer will create a seal. **DO NOT OVERTIGHTEN**



**Step 11**

Use the BFS2 Joining Strip. Push the strip down to hold the abutting bund walls together



**Step 12**

Insert all 3 grids



**Step 13**

The 2 sumps are now connected