

1 x 1000ltr IBC, 1100ltr Sump Capacity and 2000kg Load Capacity

DESCRIPTION

- Manufactured from medium density polyethylene
- Sump capacity of 1100ltr
- 2 x removable plastic grids included
- Broad range chemical compatibility
- Fully complies with all the UK Oil Storage Regulation
- Manufactured in the UK

Important Information

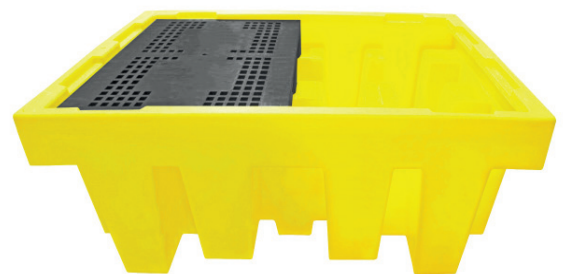
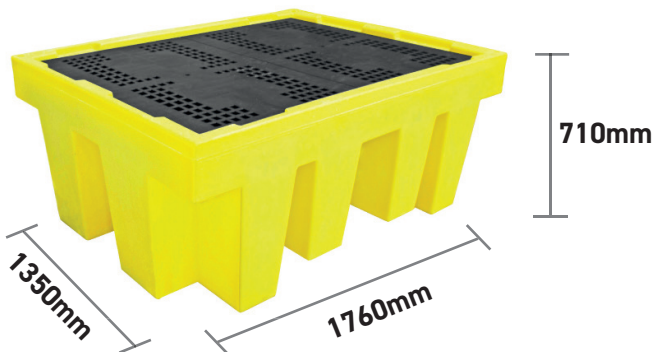
You will require an appropriate size/capacity forklift truck to offload this item from the delivery vehicle. Our standard delivery doesn't include any offloading.

All sumps hold 110% of the total stored or 25% of the combined total stored (whichever is greater).









SPECIFICATIONS

CODE	BB1
HEIGHT	710mm
LENGTH	1760mm
WIDTH	1350mm
NO OF CONTAINERS	1 x 1000ltr
SUMP CAPACITY	1100ltr
COLOUR	Yellow
TARE WEIGHT	91kg
UDL	2000kg



FEATURES AND BENEFITS



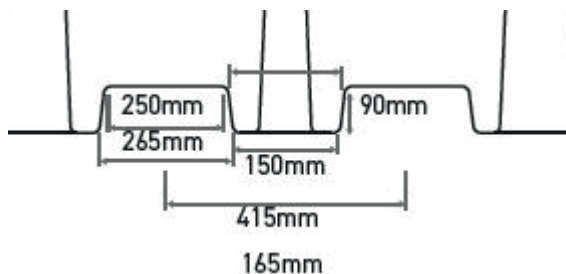
-  Compact footprint reducing floor space needed for storing IBCs within the workplace
-  Light-weight, durable, hardwearing and robust
-  Removable grids for easy cleaning
-  Low profile for easy access to IBC taps
-  2-way forklift pockets
-  UV stabilised



UK AND EXPORT PACKING SIZE

CODE	CONSIGNMENT SIZE	LENGTH	WIDTH	HEIGHT	WEIGHT	NEST	STACKABLE	FORK LIFT POCKETS	WOOD PAL
BB1	3					No	Yes	Yes	No

FORKLIFT POCKET DIMENSIONS



ACCESSORIES AVAILABLE

BB1T



DF200



OTHER MODELS AVAILABLE

BB3 - Grid not included



BB1D - Grid not included



BB1DT - Grid included



BB1S - Grid included



BB1FW - Grid included



BB1FWR - Grid included



GSP1IBC - Galvanised Steel

