

1 x 1000ltr IBC, 1100ltr Sump Capacity and 2000kg Load Capacity

DESCRIPTION

- Manufactured from medium density polyethylene
- Sump capacity of 1100ltr
- 2 x removable plastic grids included
- Broad range chemical compatibility
- Fully complies with all the UK Oil Storage Regulation
- Manufactured in the UK

Important Information

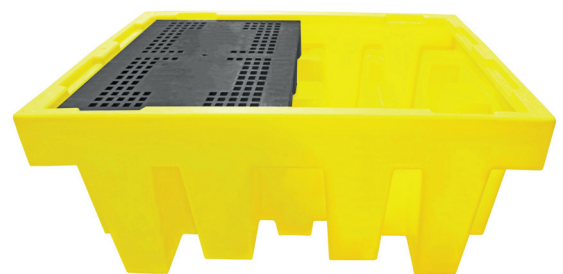
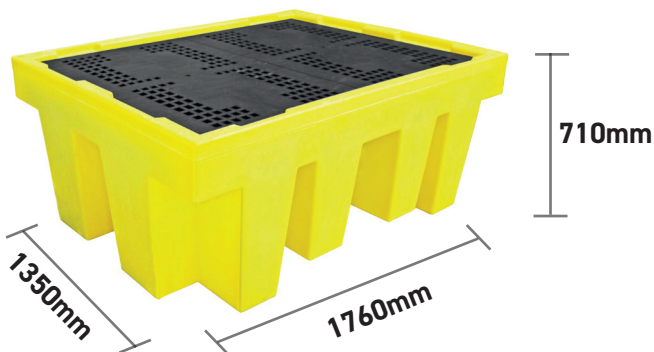
You will require an appropriate size/capacity forklift truck to offload this item from the delivery vehicle. Our standard delivery doesn't include any offloading.

All sumps hold 110% of the total stored or 25% of the combined total stored (whichever is greater).









SPECIFICATIONS

CODE	BB1
HEIGHT (MM)	710
LENGTH (MM)	1760
WIDTH (MM)	1350
NO OF CONTAINERS	1 x 1000ltr
SUMP CAPACITY	1100ltr
COLOUR	Yellow
TARE WEIGHT	91kg
UDL	2000kg



FEATURES AND BENEFITS



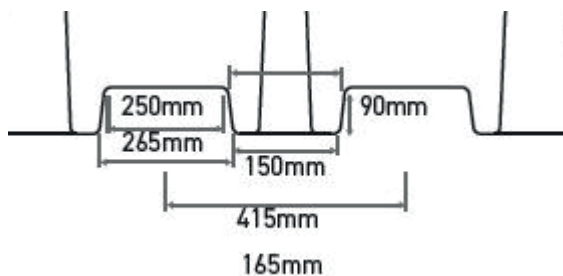
-  Compact footprint reducing floor space needed for storing IBCs within the workplace
-  Light-weight, durable, hardwearing and robust
-  Removable grid for easy cleaning
-  Low profile for easy access to IBC taps
-  2-way forklift pockets
-  UV stabilised



PACKING SIZE AVAILABLE

CODE	CONSIGNMENT SIZE	LENGTH (MM)	WIDTH (MM)	HEIGHT (MM)	WEIGHT
BB1	3	1760	1350	2200	273kg

FORKLIFT POCKET DIMENSIONS



ACCESSORIES AVAILABLE

BB1T



DF200



OTHER MODELS AVAILABLE

BB1FWR - Recycled



BB1D - Grid not included



BB1DG - Grid included



BB3 - Grid not included



BB3G - Grid not included



GSP1IBC - Galvanised Steel

