

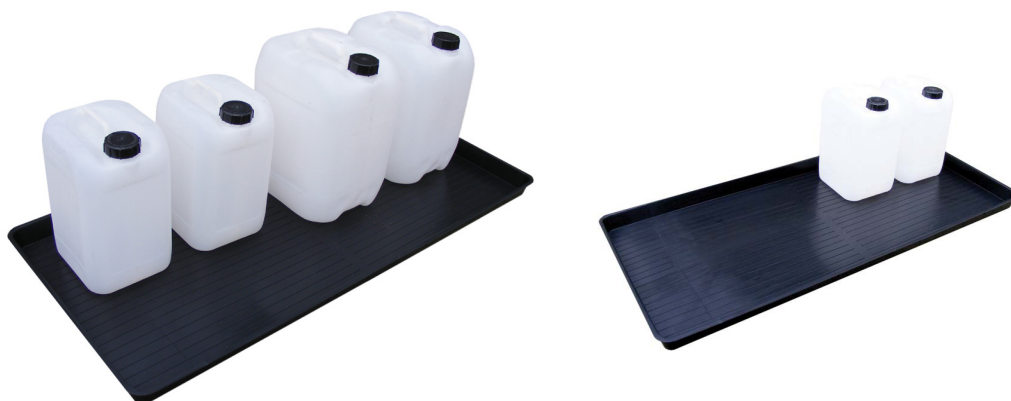


Drip Tray - TTXL

PRODUCT OVERVIEW

Backed by our 3 year guarantee

This low profile drip tray, manufactured from recycled polypropylene is ideal for areas where there is little or no clearance between the underside of the machine and the floor.



SPECIFICATIONS

CODE	EXTERNAL SIZE (L x W x H)	SUMP CAPACITY	COLOUR	TARE WEIGHT	UDL
TTXL	1200mm x 550mm x 50mm	30ltr	Black	2kg	-

