

Twist

Product Guide



TWIST

Twist & Shout!

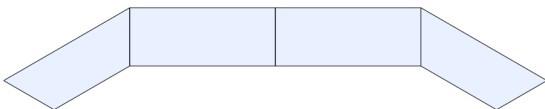
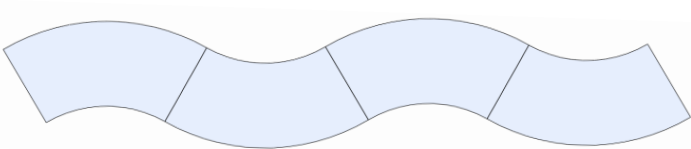
Twist flipping and nesting tables feature an easy and quick twist of the dial to flip the top from a flat to a folded position – no wires, no handles...REALLY SIMPLE!



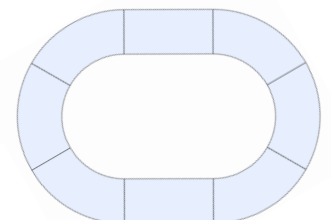
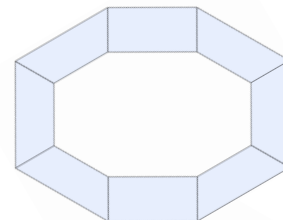
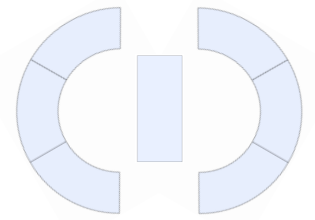
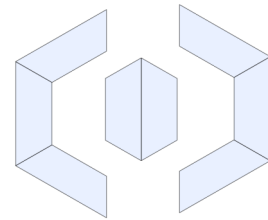
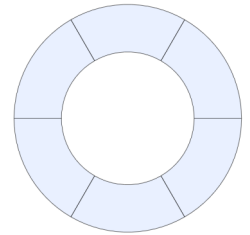
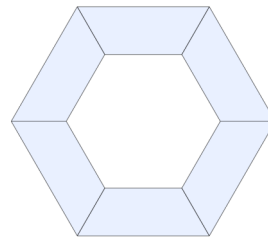


Planning

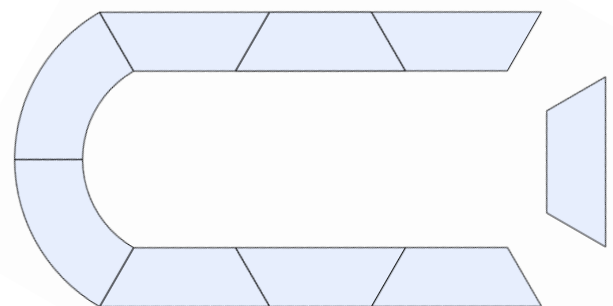
Linear Runs



Group Collaboration



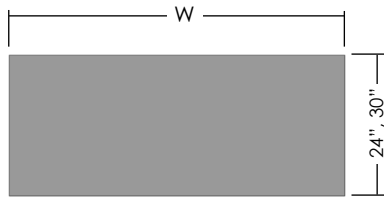
Large Conference



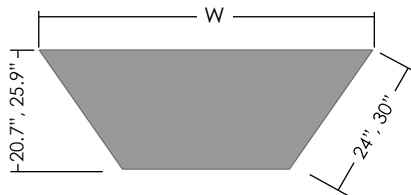
Surface Details

Notes - All TFL and HPL surfaces are 1" thick.

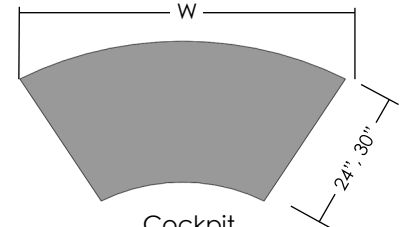
- Unless otherwise specified, 3mm thick edge trim will match surface colour.



Rectangular

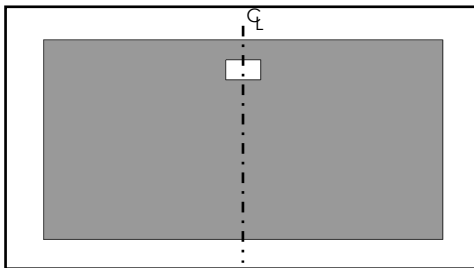


Trapezoid

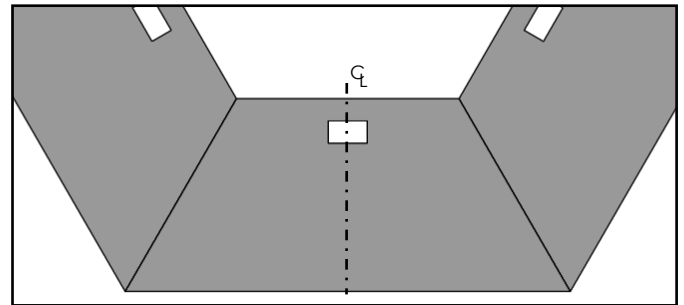


Cockpit

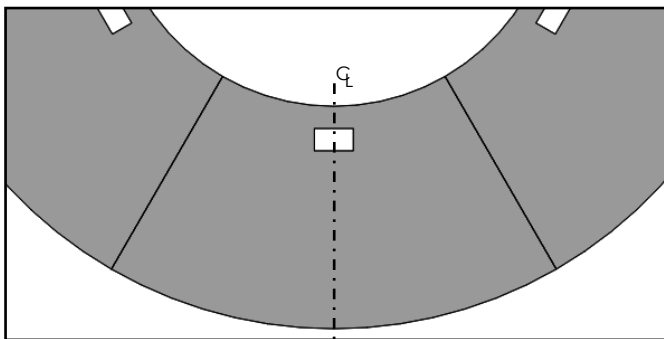
Electrical Details



Rectangular Surface - Grommet is centered on the surface.



Trapezoid Surface - Grommet is centered on the surface.
- Grommet is located along the short edge.



Cockpit Surface - Grommet is centered on the surface.
- Grommet is located along the short edge.

TW4LE2460 - 4 Pack, Rectangular Surfaces, Linear

24" x 60" Rectangular Worksurfaces, Daisy Chain Electrical.



| QTY | Product Code | Product Description |
|-----|--------------|---|
| 4 | TWSR2460DKO | 24"D x 60"W, Twist Table, Rectangular Surface, Power Knockout For XED Units |
| 1 | XEDDC604 | 2 pwr 1 dual USB. Flush Mount Pwr Module - 4 Table Kit, 60" Wide Tables |
| 3 | TG 1000 | 6"D x 2.5"W Quick Release Table ganging Mechanism (Pair) |

TW6H2472 - 6 Pack, Trapezoid Surfaces, Hexagon

24" x 72" Trapezoid Worksurfaces, Hexagon Meeting Table.



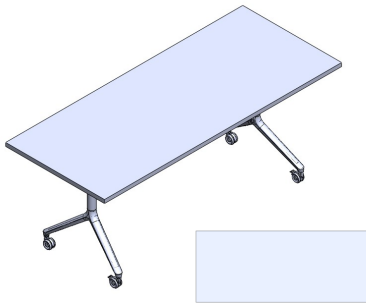
| QTY | Product Code | Product Description |
|-----|--------------|--|
| 6 | TWST2472 | 24"D x 72"W, Twist Table, Trapezoid Surface |
| 6 | TG 1000 | 6"D x 2.5"W Quick Release Table ganging Mechanism (Pair) |
| 6 | TWGLP48 | 48" Low Profile Wire Manager |

TW9LA2460 - 9 Pack, Rectangular and Trapezoid Surfaces

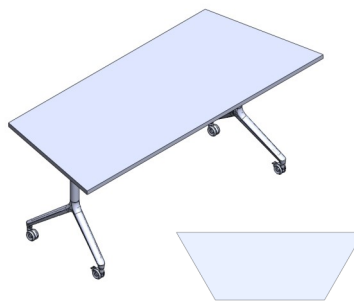
24" x 60" Rectangular and Trapezoid Worksurfaces, Two Linear Angled Runs



| QTY | Product Code | Product Description |
|-----|--------------|--|
| 5 | TWSR2460 | 24"D x 60"W, Twist Table, Rectangular Surface |
| 4 | TWST2460 | 24"D x 60"W, Twist Table, Trapezoid Surface |
| 7 | TG 1000 | 6"D x 2.5"W Quick Release Table ganging Mechanism (Pair) |
| 4 | TWGLP36 | 36" Low Profile Wire Manager |
| 5 | TWGLP60 | 60" Low Profile Wire Manager |



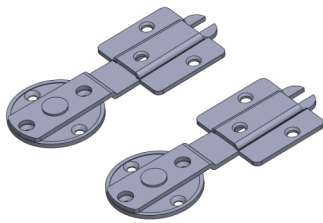
TWSR
Twist Frame
Rectangular Surface



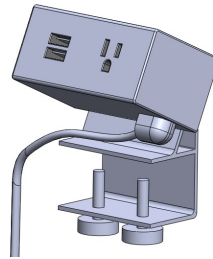
TWST
Twist Frame
Trapezoid Surface



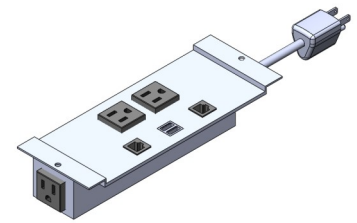
TWSC
Twist Frame
Cockpit Surface



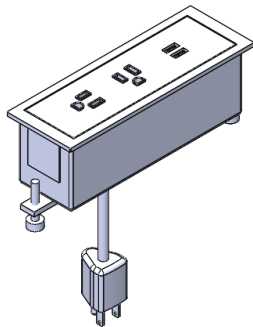
TG 1000
Quick Release
Table Gang Mech



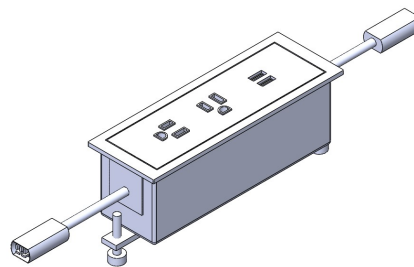
TACP
Clamp-on
Power



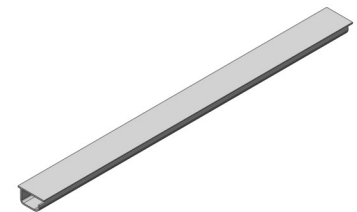
XEV
Plug-in Power Module, Flip-Up
Grommet



XED
Plug-in Power Module,
Flush Mount



XEDDC
Daisy Chain Power Module,
Flush Mount

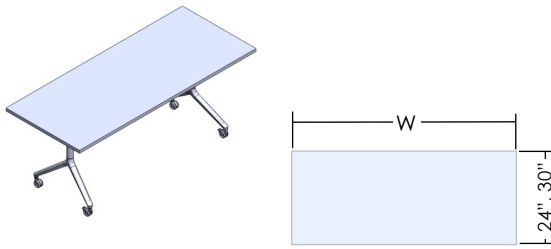


XWGLP
Low Profile
Wire Manager

Please see www.fluidgroup.com/finishes for finish details

TWSR

Twist - Frame with Rectangular Surface



What's Included:

Twist Frame with Worksurface, Four Casters (Two Locking). All Necessary Hardware.

Finish Options:

Twist Frame Silver (**PPL**) only, TFL Laminate Finish
Please see www.fluidgroup.com/finishes for finish details

Information Required to Order:

Frame with Surface Code / Applicable Finishes. Example: **TWSR2472/NW**

Note: Electrical modules are specified separately

List

TFL

| Product Code | Product Description | List |
|--------------|---|------|
| TWSR2448 | 24"D x 48"W, Twist Table, Rectangular Surface | TFL |
| TWSR2460 | 24"D x 60"W, Twist Table, Rectangular Surface | |
| TWSR2466 | 24"D x 66"W, Twist Table, Rectangular Surface | |
| TWSR2472 | 24"D x 72"W, Twist Table, Rectangular Surface | |
| TWSR3048 | 30"D x 48"W, Twist Table, Rectangular Surface | |
| TWSR3060 | 30"D x 60"W, Twist Table, Rectangular Surface | |
| TWSR3066 | 30"D x 66"W, Twist Table, Rectangular Surface | |
| TWSR3072 | 30"D x 72"W, Twist Table, Rectangular Surface | |

List

TFL

| Product Code | Product Description | List |
|--------------|---|------|
| TWSR2448DKO | 24"D x 48"W, Twist Table, Rectangular Surface, Power Knockout For XED Units | |
| TWSR2460DKO | 24"D x 60"W, Twist Table, Rectangular Surface, Power Knockout For XED Units | |
| TWSR2466DKO | 24"D x 66"W, Twist Table, Rectangular Surface, Power Knockout For XED Units | |
| TWSR2472DKO | 24"D x 72"W, Twist Table, Rectangular Surface, Power Knockout For XED Units | |
| TWSR3048DKO | 30"D x 48"W, Twist Table, Rectangular Surface, Power Knockout For XED Units | |
| TWSR3060DKO | 30"D x 60"W, Twist Table, Rectangular Surface, Power Knockout For XED Units | |
| TWSR3066DKO | 30"D x 66"W, Twist Table, Rectangular Surface, Power Knockout For XED Units | |
| TWSR3072DKO | 30"D x 72"W, Twist Table, Rectangular Surface, Power Knockout For XED Units | |

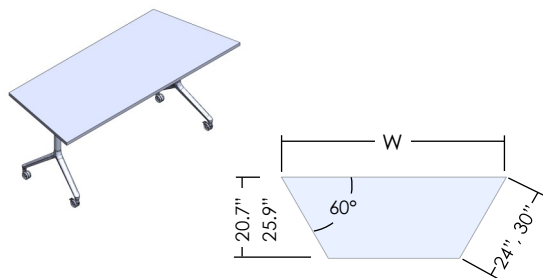
List

TFL

| Product Code | Product Description | List |
|--------------|---|------|
| TWSR2448VKO | 24"D x 48"W, Twist Table, Rectangular Surface, Power Knockout For XEV Units | |
| TWSR2460VKO | 24"D x 60"W, Twist Table, Rectangular Surface, Power Knockout For XEV Units | |
| TWSR2466VKO | 24"D x 66"W, Twist Table, Rectangular Surface, Power Knockout For XEV Units | |
| TWSR2472VKO | 24"D x 72"W, Twist Table, Rectangular Surface, Power Knockout For XEV Units | |
| TWSR3048VKO | 30"D x 48"W, Twist Table, Rectangular Surface, Power Knockout For XEV Units | |
| TWSR3060VKO | 30"D x 60"W, Twist Table, Rectangular Surface, Power Knockout For XEV Units | |
| TWSR3066VKO | 30"D x 66"W, Twist Table, Rectangular Surface, Power Knockout For XEV Units | |
| TWSR3072VKO | 30"D x 72"W, Twist Table, Rectangular Surface, Power Knockout For XEV Units | |

TWST

Twist - Frame with Trapezoid Surface



What's Included:

Twist Frame with Worksurface, Four Casters (Two Locking). All Necessary Hardware.

Finish Options:

Twist Frame Silver **(PPL)** only, TFL Laminate Finish

Please see www.fluidgroup.com/finishes for finish details

Information Required to Order:

Frame with Surface Code / Applicable Finishes. Example: **TWST2472/NW**

Note: Electrical modules are specified separately

List
TFL

| Product Code | Product Description | List TFL |
|--------------|---|-------------|
| TWST2460 | 24"D x 60"W, Twist Table, Trapezoid Surface | |
| TWST2466 | 24"D x 66"W, Twist Table, Trapezoid Surface | |
| TWST2472 | 24"D x 72"W, Twist Table, Trapezoid Surface | |
| TWST3060 | 30"D x 60"W, Twist Table, Trapezoid Surface | |
| TWST3066 | 30"D x 66"W, Twist Table, Trapezoid Surface | |
| TWST3072 | 30"D x 72"W, Twist Table, Trapezoid Surface | |

List
TFL

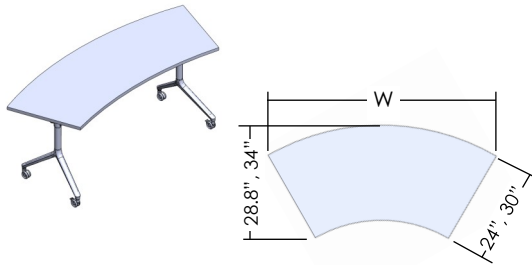
| Product Code | Product Description | List TFL |
|--------------|---|-------------|
| TWST2460DKO | 24"D x 60"W, Twist Table, Trapezoid Surface, Power Knockout For XED Units | |
| TWST2466DKO | 24"D x 66"W, Twist Table, Trapezoid Surface, Power Knockout For XED Units | |
| TWST2472DKO | 24"D x 72"W, Twist Table, Trapezoid Surface, Power Knockout For XED Units | |
| TWST3060DKO | 30"D x 60"W, Twist Table, Trapezoid Surface, Power Knockout For XED Units | |
| TWST3066DKO | 30"D x 66"W, Twist Table, Trapezoid Surface, Power Knockout For XED Units | |
| TWST3072DKO | 30"D x 72"W, Twist Table, Trapezoid Surface, Power Knockout For XED Units | |

List
TFL

| Product Code | Product Description | List TFL |
|--------------|---|-------------|
| TWST2460VKO | 24"D x 60"W, Twist Table, Trapezoid Surface, Power Knockout For XEV Units | |
| TWST2466VKO | 24"D x 66"W, Twist Table, Trapezoid Surface, Power Knockout For XEV Units | |
| TWST2472VKO | 24"D x 72"W, Twist Table, Trapezoid Surface, Power Knockout For XEV Units | |
| TWST3060VKO | 30"D x 60"W, Twist Table, Trapezoid Surface, Power Knockout For XEV Units | |
| TWST3066VKO | 30"D x 66"W, Twist Table, Trapezoid Surface, Power Knockout For XEV Units | |
| TWST3072VKO | 30"D x 72"W, Twist Table, Trapezoid Surface, Power Knockout For XEV Units | |

TWSC

Twist - Frame with Cockpit Surface



What's Included:

Twist Frame with Worksurface, Four Casters (Two Locking). All Necessary Hardware.

Finish Options:

Twist Frame Silver (**PPL**) only, TFL Laminate Finish

Please see www.fluidgroup.com/finishes for finish details

Information Required to Order:

Frame with Surface Code / Applicable Finishes. Example: **TWSC2472/NW**

Note: Electrical modules are specified separately

List

TFL

| Product Code | Product Description |
|--------------|---|
| TWSC2460 | 24"D x 60"W, Twist Table, Cockpit Surface |
| TWSC2466 | 24"D x 66"W, Twist Table, Cockpit Surface |
| TWSC2472 | 24"D x 72"W, Twist Table, Cockpit Surface |
| TWSC3060 | 30"D x 60"W, Twist Table, Cockpit Surface |
| TWSC3066 | 30"D x 66"W, Twist Table, Cockpit Surface |
| TWSC3072 | 30"D x 72"W, Twist Table, Cockpit Surface |

List

TFL

| Product Code | Product Description |
|--------------|---|
| TWSC2460DKO | 24"D x 60"W, Twist Table, Cockpit Surface, Power Knockout For XED Units |
| TWSC2466DKO | 24"D x 66"W, Twist Table, Cockpit Surface, Power Knockout For XED Units |
| TWSC2472DKO | 24"D x 72"W, Twist Table, Cockpit Surface, Power Knockout For XED Units |
| TWSC3060DKO | 30"D x 60"W, Twist Table, Cockpit Surface, Power Knockout For XED Units |
| TWSC3066DKO | 30"D x 66"W, Twist Table, Cockpit Surface, Power Knockout For XED Units |
| TWSC3072DKO | 30"D x 72"W, Twist Table, Cockpit Surface, Power Knockout For XED Units |

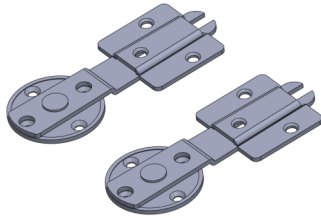
List

TFL

| Product Code | Product Description |
|--------------|---|
| TWSC2460VKO | 24"D x 60"W, Twist Table, Cockpit Surface, Power Knockout For XEV Units |
| TWSC2466VKO | 24"D x 66"W, Twist Table, Cockpit Surface, Power Knockout For XEV Units |
| TWSC2472VKO | 24"D x 72"W, Twist Table, Cockpit Surface, Power Knockout For XEV Units |
| TWSC3060VKO | 30"D x 60"W, Twist Table, Cockpit Surface, Power Knockout For XEV Units |
| TWSC3066VKO | 30"D x 66"W, Twist Table, Cockpit Surface, Power Knockout For XEV Units |
| TWSC3072VKO | 30"D x 72"W, Twist Table, Cockpit Surface, Power Knockout For XEV Units |

TG 1000

Quick Release Table Ganging Mechanism



What's Included:
One Pair of Quick Release Mechanisms (As Shown).
All Necessary Hardware.

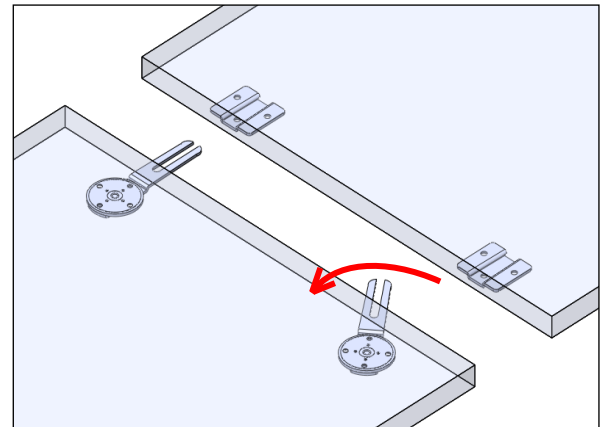
Finish Options:
Not Applicable. Silver Only.

Information Required to Order:
Quick Release Table Ganging Mechanism Code.

Notes - Mechanisms Pivot Under Table When Not In Use.

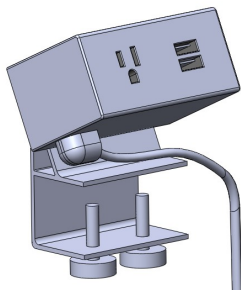
| Product Code | Product Description | List |
|--------------|--|------|
| TG 1000 | 6"D x 2.5"W Quick Release Table ganging Mechanism (Pair) | |

Mechanism pivots under table when not in use.



TACP

Clamp-on Power



What's Included:
Clamp-on Power Module.

Finish Options:
Storm (Gray)

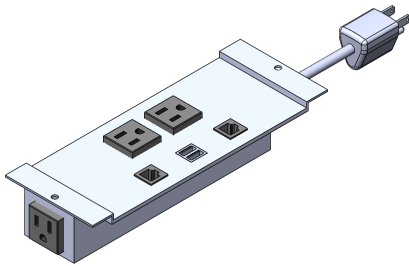
Information Required to Order:
Clamp-on Module Code / Finish.
Example: **TACPB/Storm**

Standard three prong wall plug, Recommended one unit per user, 15A/120V power simplexes, Dual charging USB - 2A/5V per charging port

| Product Code | Product Description | List Grade 1 |
|--------------|--------------------------------|-----------------|
| TACPA | Clamp-on Power, 2 Power | |
| TACPB | Clamp On Power, 1 Power / 1USB | |

XEV

Plug-in Power Modules, Flip-Up Grommet



What's Included:

Power Module, **Grommet Specified Separately.**

Finish Options:

Silver (S)

Information Required to Order:

Power Module code, Grommet code, Finish. Example: **XEVB/S & XEVGROM/S**

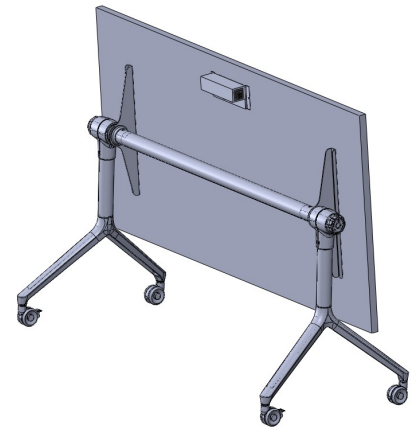
Standard three prong wall plug, Recommended one unit per 1-2 user(s), 15A/120V power simplexes, Dual charging USB - 2A/5V per charging port.

Convenience plug below surface allows a user to connect to their neighbor. It is not recommended to connect more than 4 units together.

| Product Code | Product Description | List |
|--------------|---|------|
| XEVA | 2 pwr, 1 dual USB, 2 data KO. Pwr Module for Flip-Up Grommet. 72" Cord | |
| XEVB | 2 pwr, 1 dual USB, 2 data KO. Pwr Module for Flip-Up Grommet. 108" Cord | |
| XEVC | 2 pwr, 1 dual USB, 2 RJ45. Pwr Module for Flip-Up Grommet. 72" Cord | |
| XEVD | 2 pwr, 1 dual USB, 2 RJ45. Pwr Module for Flip-Up Grommet. 108" Cord | |
| XEVGROM* | Flip-Up Grommet with Brush | |

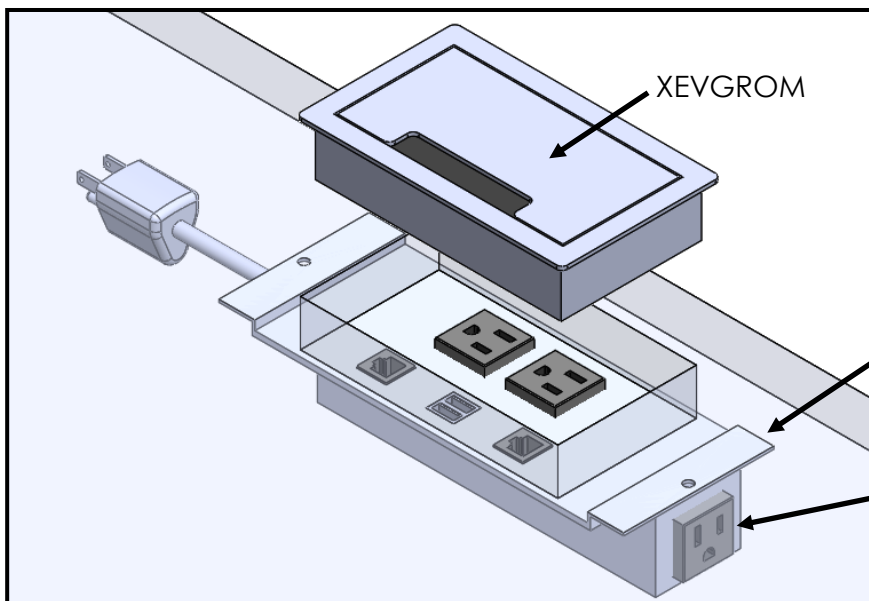
*Grommet specified separately from all XEV units

Flip-up grommets sit flush on the worksurface and provide access to power and data below.



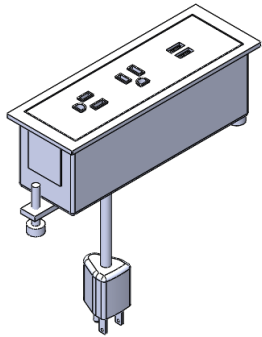
XEV Power Modules are mounted below the surface.

The convenience plug below the worksurface allows a user to connect to their neighbor.



XED

Plug-in Power Modules, Flush Mount



What's Included:
Power Module

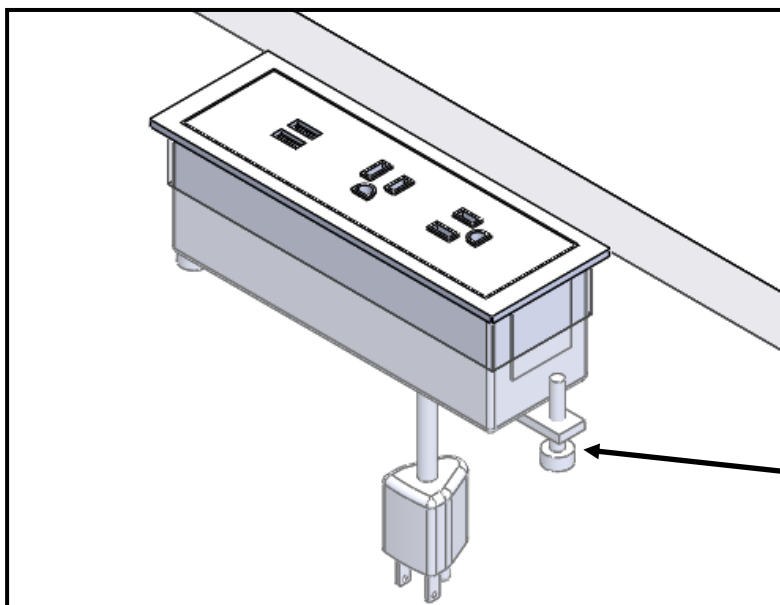
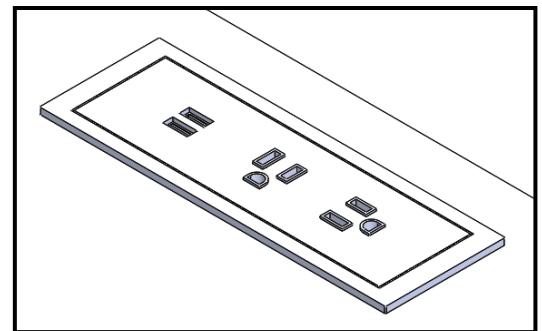
Finish Options:
Storm (Gray)

Information Required to Order:
Power Module code, Finish
Example: **XEDA/Storm**

Standard three prong wall plug, Recommended one unit per 1-2 user(s), 15A/120V power simplexes, Dual charging USB - 2A/5V per charging port

| Product Code | Product Description | List |
|--------------|--|------|
| XEDA | 2 pwr, 1 dual USB. Flush Mount Pwr Module. 72" Cord | |
| XEDB | 2 pwr, 1 dual USB. Flush Mount Pwr Module. 120" Cord | |

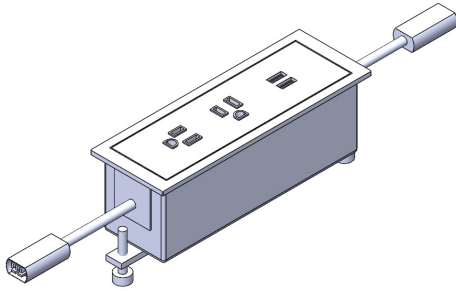
XED modules sit flush on the surface.



Thumb screws are used to secure the unit below the worksurface.

XEDDC

Daisy Chain Power Modules, Flush Mount



What's Included:

Daisy chain Kit (Power Module, Interconnecting Cables, Starter Cable, Wire Management)

Finish Options:

Storm (Gray)

Information Required to Order:

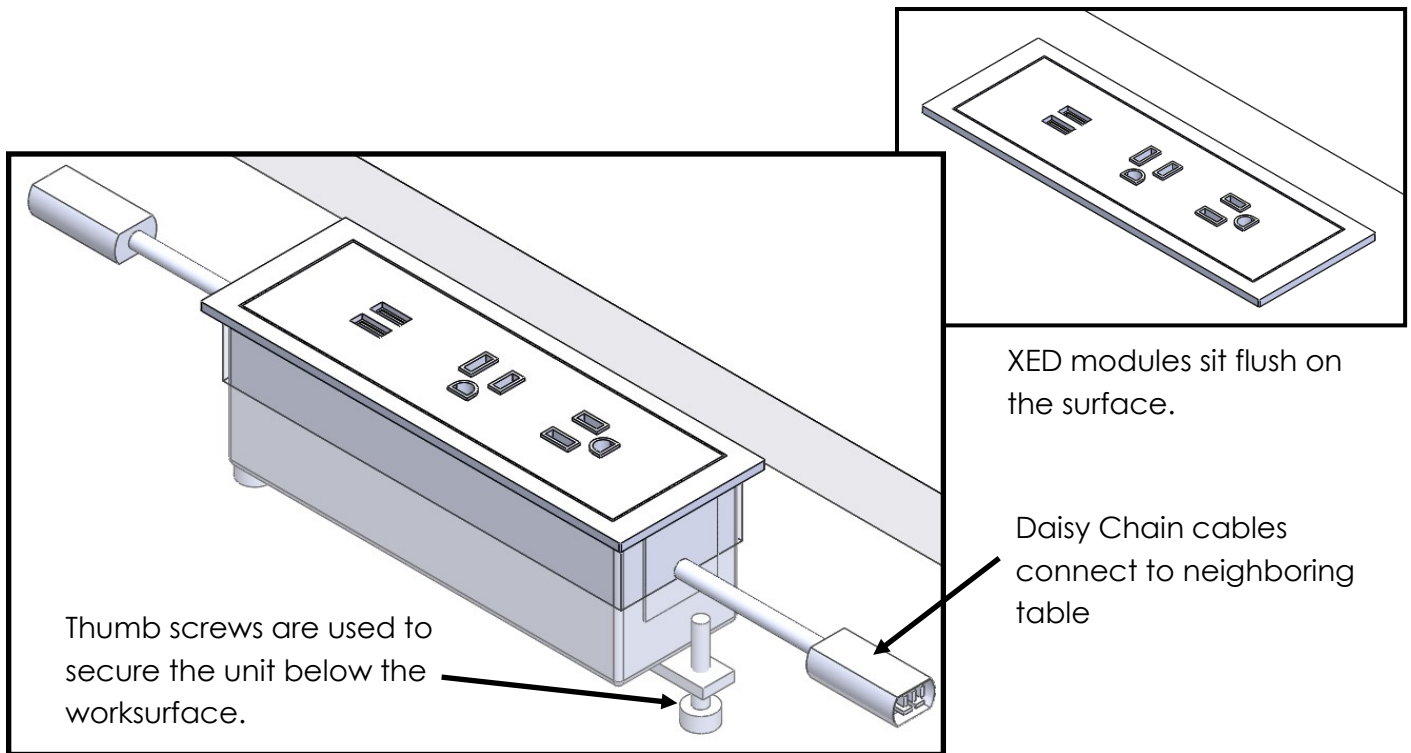
Power Module code, Finish

Example: **XEDDC723/Storm**

Standard three prong wall plug starter cable. Recommended one unit per user, 15A/120V power simplexes, Dual charging USB - 2A/5V per charging port.

Kits include one unit per table, connect and re-connect up to 4 units in any order. Kits include starter cables and interconnect cables for specified number of tables.

| Product Code | Product Description | List |
|--------------|--|------|
| XEDDC602 | 2 pwr, 1 dual USB. Flush Mount Pwr Module - 2 Table Kit, 60" Wide Tables | |
| XEDDC603 | 2 pwr, 1 dual USB. Flush Mount Pwr Module - 3 Table Kit, 60" Wide Tables | |
| XEDDC604 | 2 pwr, 1 dual USB. Flush Mount Pwr Module - 4 Table Kit, 60" Wide Tables | |
| XEDDC722 | 2 pwr, 1 dual USB. Flush Mount Pwr Module - 2 Table Kit, 72" Wide Tables | |
| XEDDC723 | 2 pwr, 1 dual USB. Flush Mount Pwr Module - 3 Table Kit, 72" Wide Tables | |
| XEDDC724 | 2 pwr, 1 dual USB. Flush Mount Pwr Module - 4 Table Kit, 72" Wide Tables | |



Recommended Wire Manager Sizes

Rectangular



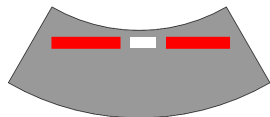
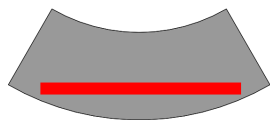
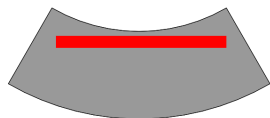
| 48" Wide | 60" Wide | 66" Wide | 72" Wide |
|-----------|-----------|-----------|-----------|
| TWGLP48 | TWGLP60 | TWGLP66 | TWGLP72 |
| TWGLPPM48 | TWGLPPM60 | TWGLPPM66 | TWGLPPM72 |

Trapezoid



| 60" Wide | 66" Wide | 72" Wide |
|---------------|---------------|---------------|
| 24D TWGLP42 | 24D TWGLP48 | 24D TWGLP54 |
| 30D TWGLP36 | 30D TWGLP42 | 30D TWGLP48 |
| TWGLP60 | TWGLP66 | TWGLP72 |
| 24D TWGLPPM42 | 24D TWGLPPM48 | 24D TWGLPPM54 |
| 30D TWGLPPM36 | 30D TWGLPPM42 | 30D TWGLPPM48 |

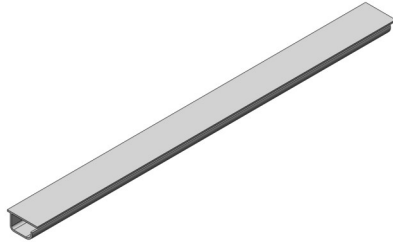
Cockpit



| 60" Wide | 66" Wide | 72" Wide |
|---------------|---------------|---------------|
| 24D TWGLP48 | 24D TWGLP54 | 24D TWGLP60 |
| 30D TWGLP42 | 30D TWGLP48 | 30D TWGLP54 |
| TWGLP60 | TWGLP66 | TWGLP72 |
| 24D TWGLPPM48 | 24D TWGLPPM54 | 24D TWGLPPM60 |
| 30D TWGLPPM42 | 30D TWGLPPM42 | 30D TWGLPPM42 |

TWGLP

Low Profile Wire Manager - Full Length



What's Included:

Low Profile Wire Manager, All Necessary Hardware.

Finish Options:

Not Applicable. Light Grey Only

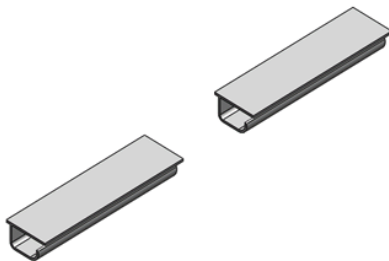
Information Required to Order:

Low Profile Wire Manager Code. Example: **TWGLP60**

| Product Code | Product Description | List |
|--------------|------------------------------|------|
| TWGLP30 | 30" Low Profile Wire Manager | |
| TWGLP36 | 36" Low Profile Wire Manager | |
| TWGLP42 | 42" Low Profile Wire Manager | |
| TWGLP48 | 48" Low Profile Wire Manager | |
| TWGLP54 | 54" Low Profile Wire Manager | |
| TWGLP60 | 60" Low Profile Wire Manager | |
| TWGLP66 | 66" Low Profile Wire Manager | |
| TWGLP72 | 72" Low Profile Wire Manager | |

TWGLPPM

Low Profile Wire Manager - For Power Module



What's Included:

Two Sections of Low Profile Wire Manager, All Necessary Hardware.

Finish Options:

Not Applicable. Light Grey Only

Information Required to Order:

Low Profile Wire Manager Code. Example: **TWGLPPM60**

| Product Code | Product Description | List |
|--------------|--|------|
| TWGLPPM30 | 30" Low Profile Wire Manager, For Power Module | |
| TWGLPPM36 | 36" Low Profile Wire Manager, For Power Module | |
| TWGLPPM42 | 42" Low Profile Wire Manager, For Power Module | |
| TWGLPPM48 | 48" Low Profile Wire Manager, For Power Module | |
| TWGLPPM54 | 54" Low Profile Wire Manager, For Power Module | |
| TWGLPPM60 | 60" Low Profile Wire Manager, For Power Module | |
| TWGLPPM66 | 66" Low Profile Wire Manager, For Power Module | |
| TWGLPPM72 | 72" Low Profile Wire Manager, For Power Module | |

How to Order - Please send all purchase orders to order@fluidgroup.com or fax to 1.866.769.6057.

Questions - Call us toll free at 1.866.933.5258.

Please see www.fluidgroup.com for all information including:

- Terms & conditions
- Warranty information
- Local representation information
- Finishes & resources

Thank-you for choosing fluidconcepts!

fluidconcepts & design inc.
96 Planchet Rd.
Concord Ontario Canada
L4K 2C7

TF. 1.866.933.5258
Fax. 1.866.789.6057
www.fluidgroup.com
order@fluidgroup.com

