

Truss™ workbench

Product Guide





Double Sided



Single Sided

Truss™ workbench

Elevate your work!

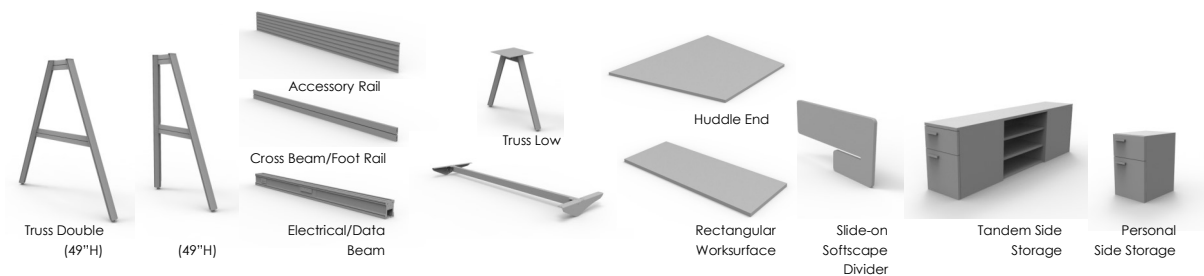
The Truss workbench is a high performance truss based desking and benching system offering extreme structural stability, flexibility, infinite worksurface and storage height adjustment. **A new way of thinking and working.**



Key Features

- Unique Truss Design—One Truss supports both 24" and/or 30" deep worksurfaces
- Worksurfaces can be set at seated or standing height—or anywhere in between—25"H - 42"H
- Storage is Truss side mounted at the height where you need it
- Truss supports spatial dividers, various worktools, and media
- Electrical & Data Beam provides 8 wire/4 circuit power - Base Feed

Core Components



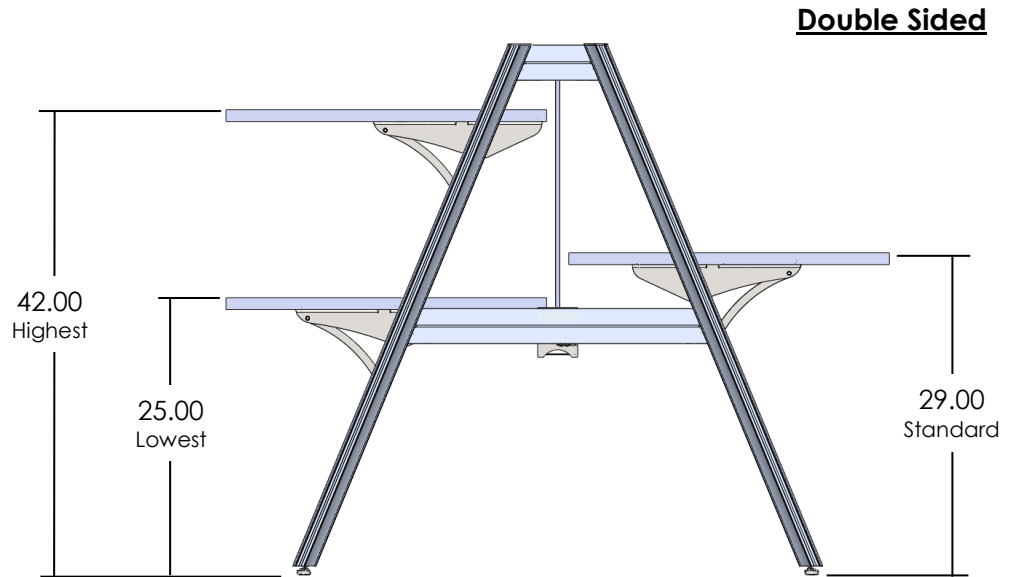
www.fluidgroup.com sales@fluidgroup.com 1.866.933.5258

Truss Workbench are Trademarked brands of fluidconcept & design inc. All rights, industrial designs and copyrights reserved. Patents Pending.

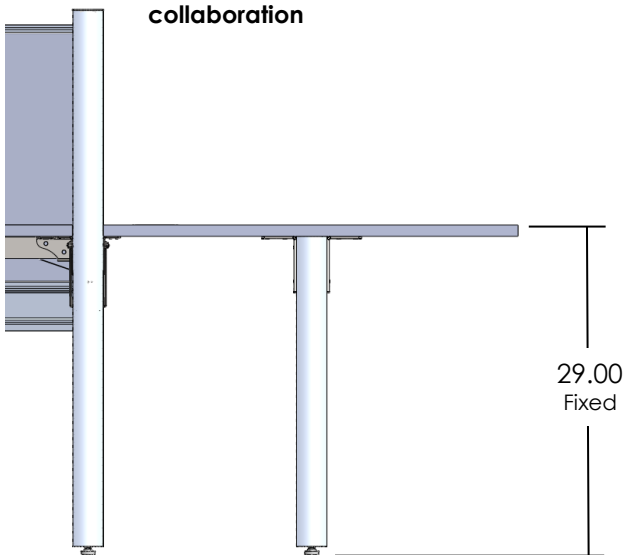


Adjustable Surface

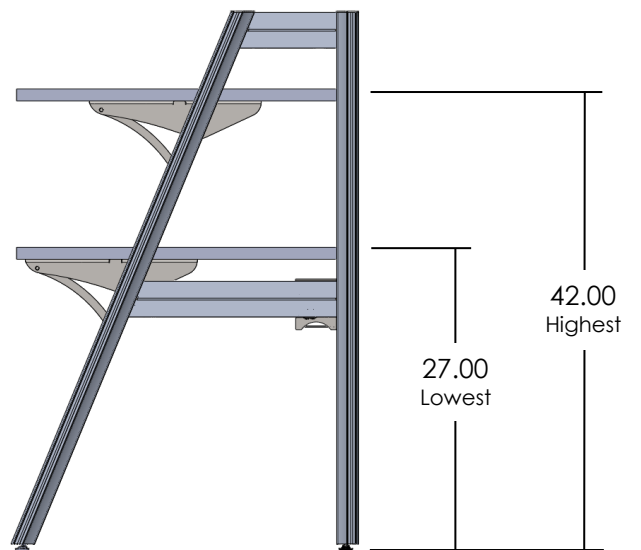
Surfaces can be installed at any height between the highest and lowest positions to suit the user's needs.

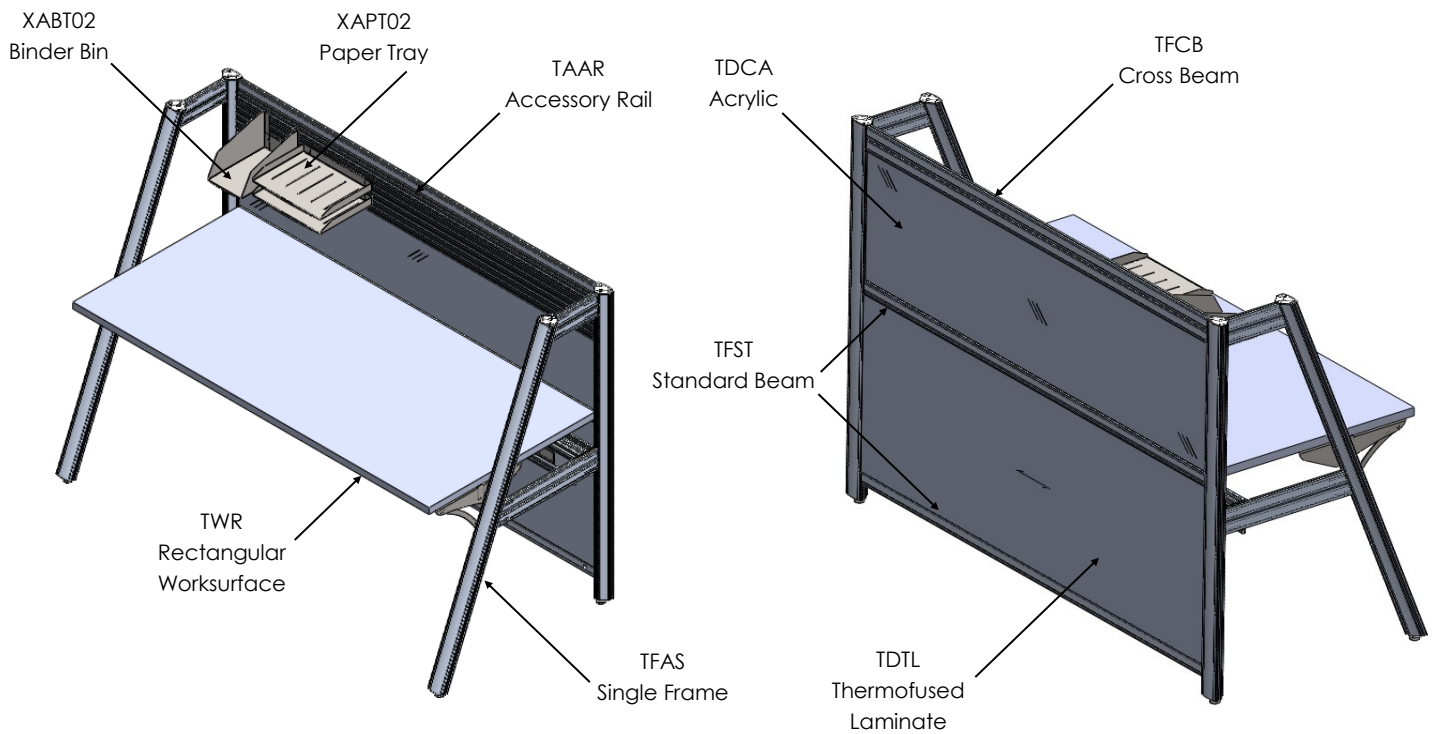
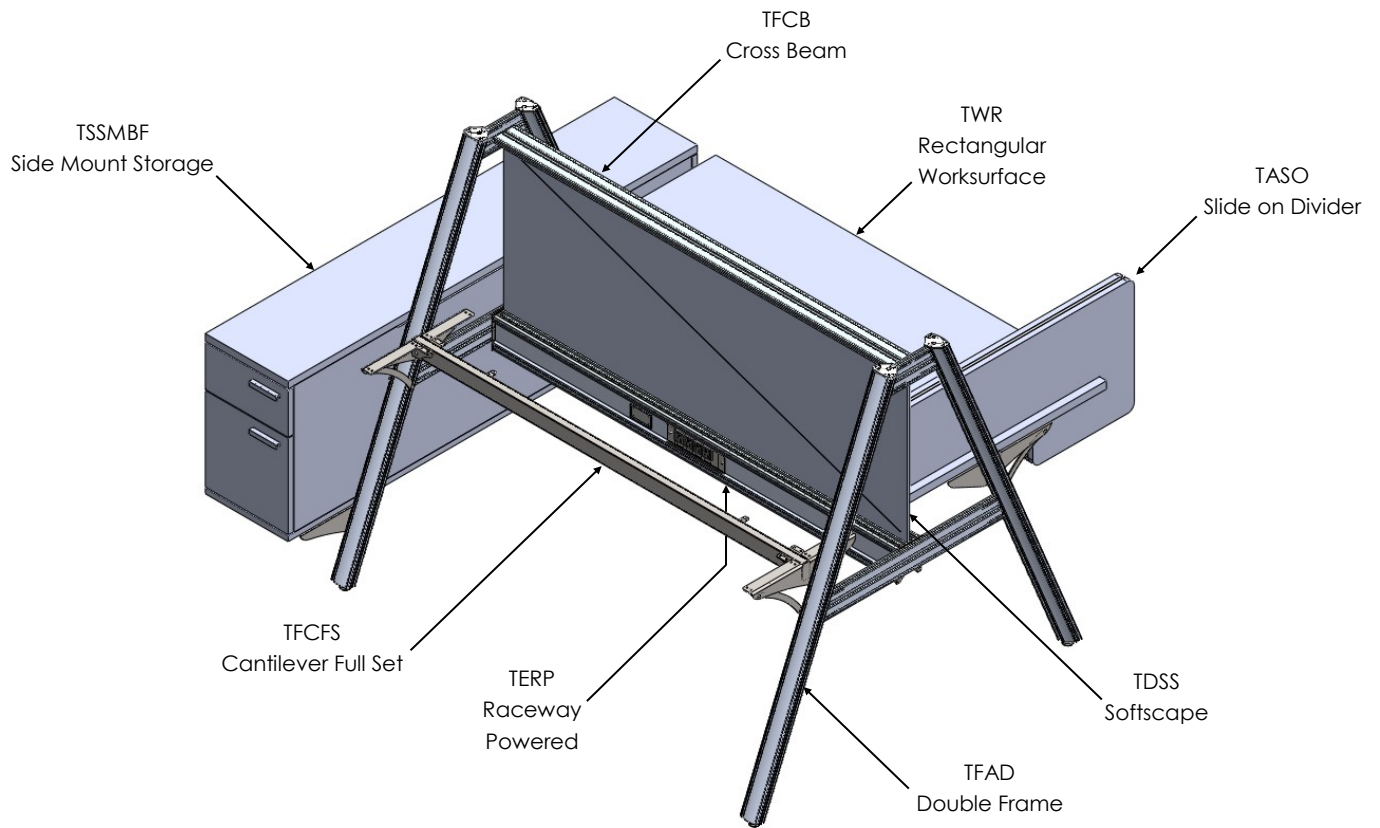


Huddle End - For team collaboration



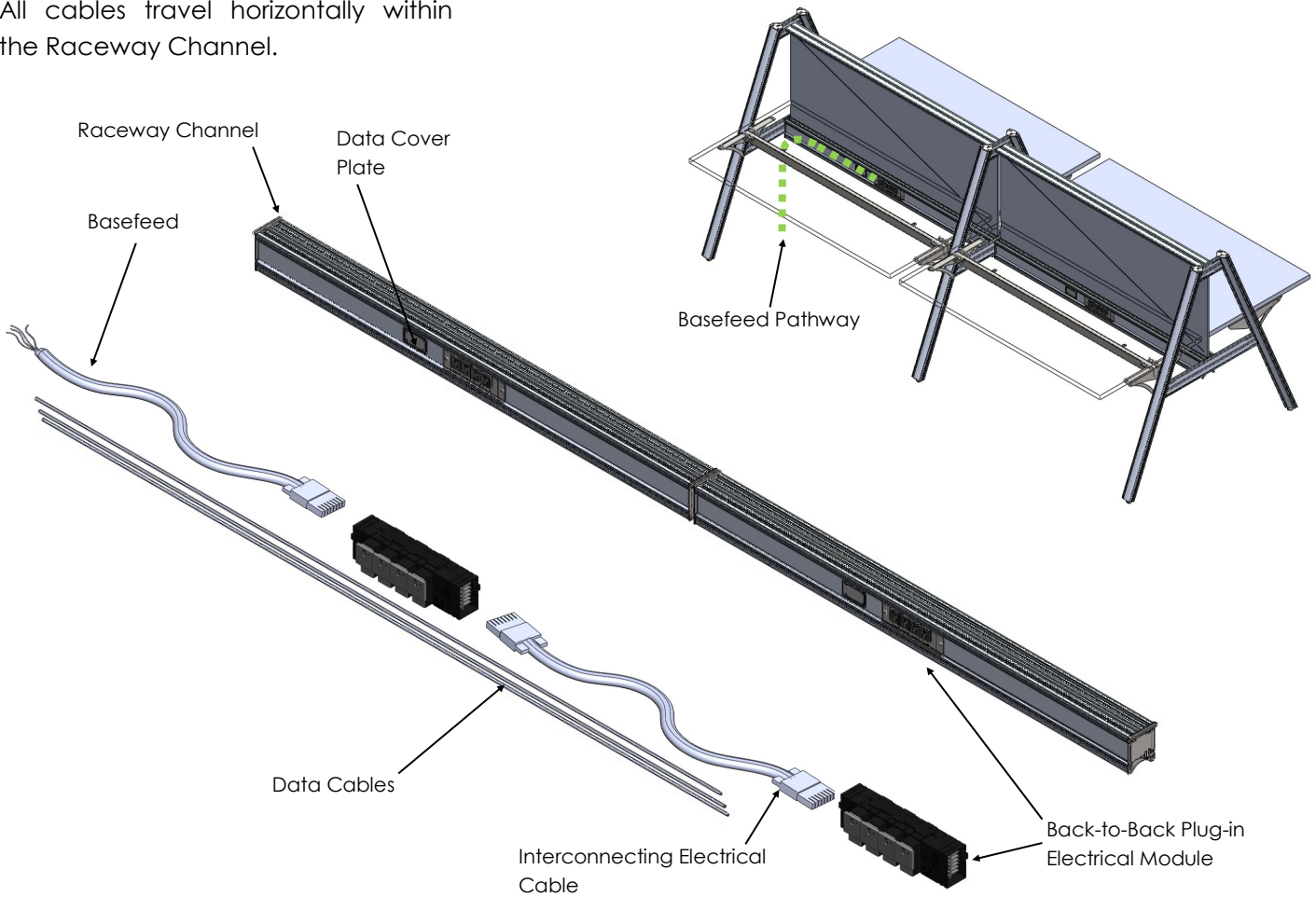
Single Sided





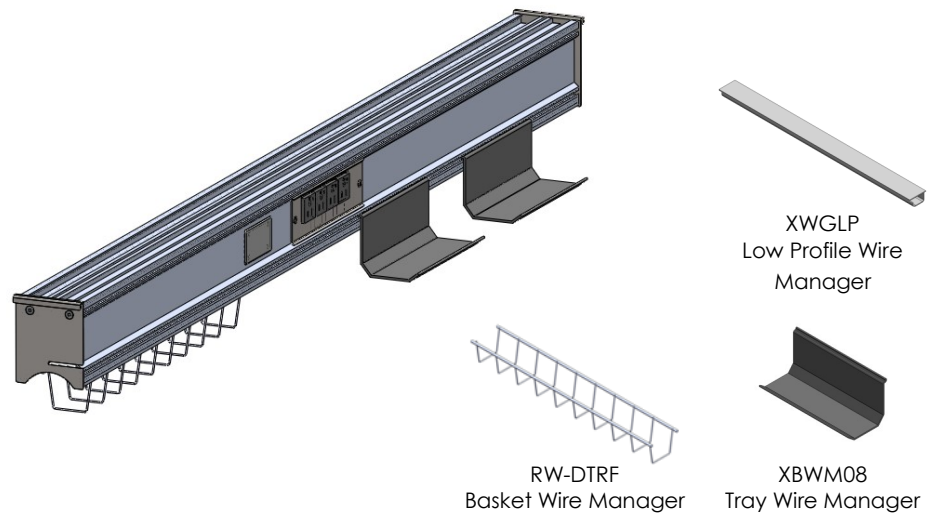
Electrical Pathway

All cables travel horizontally within the Raceway Channel.

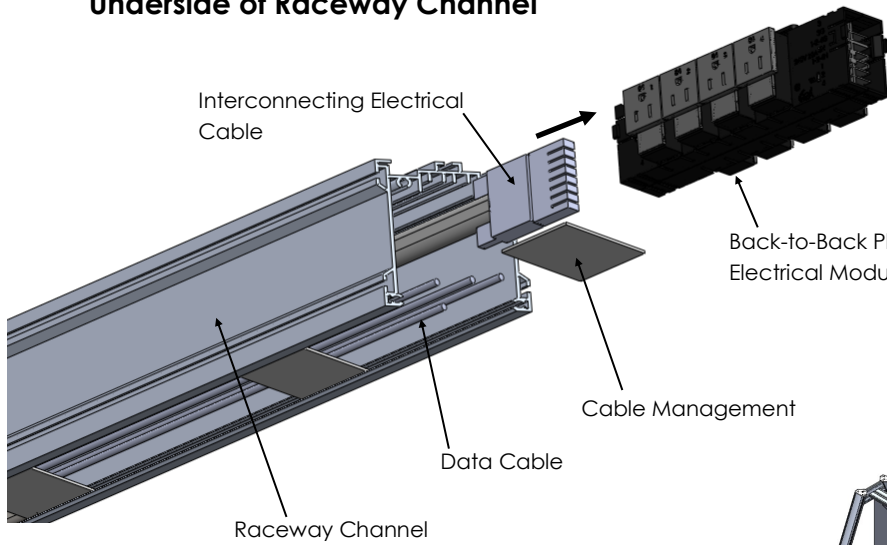


External Electrical Management

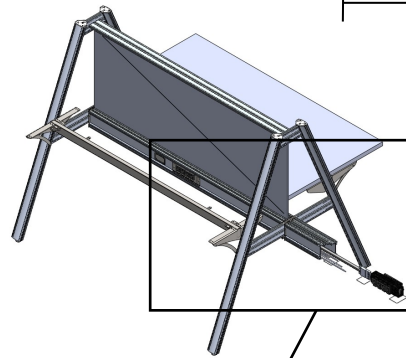
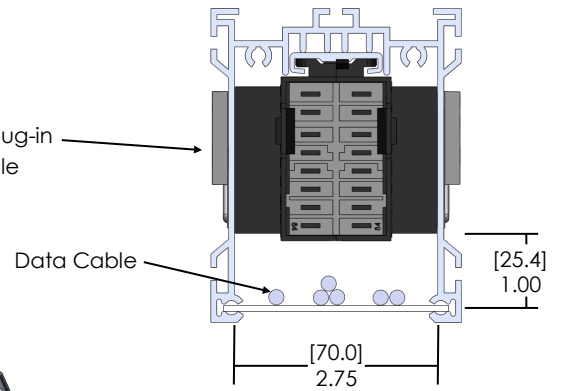
If cable management is required outside of the Raceway Channel, complementary products are available to help. The Wire Basket and Tray style managers add additional cable capacity down the spine of the station. The Low Profile Wire Manager can attach to the underside of the work-surface wherever additional cable management is required.



Underside of Raceway Channel

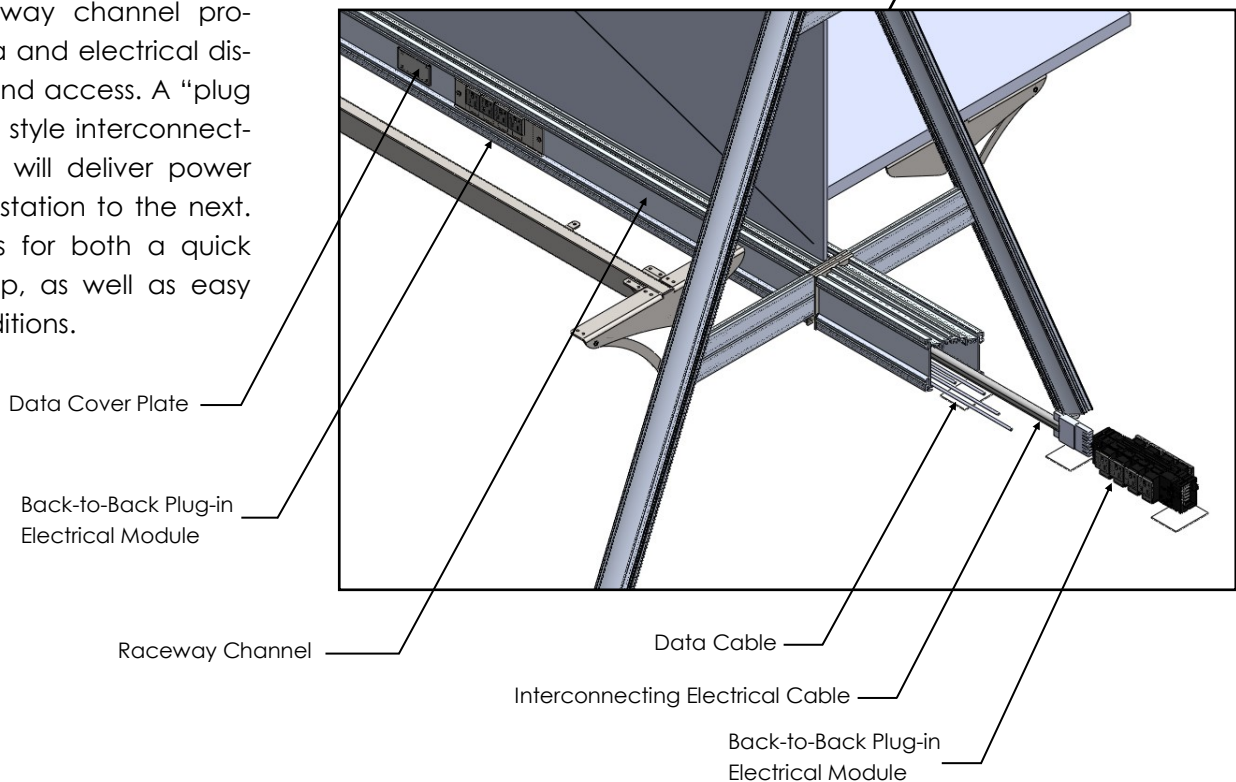


Raceway Channel Profile



Electrical details

The Raceway channel provides data and electrical distribution and access. A “plug and play” style interconnecting cable will deliver power from one station to the next. This allows for both a quick initial setup, as well as easy future additions.



Whether you would like to order a pre-configured station or build to suit your exact needs, Truss can be specified one of three different ways to move your project forward.

- 1) Simply choose a **Typical Station from pages 9-11** to suit the needs of your project. Select from the list of Grade 1 Finishes and you're done!

OR

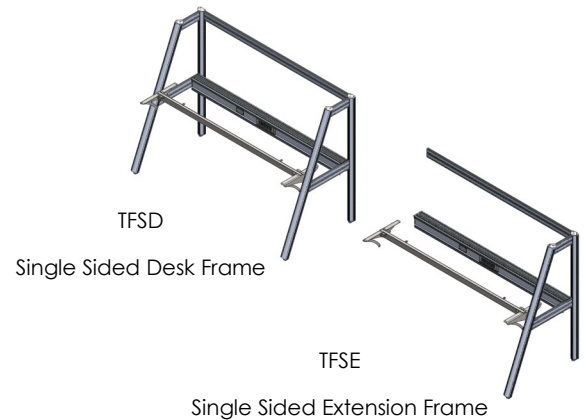
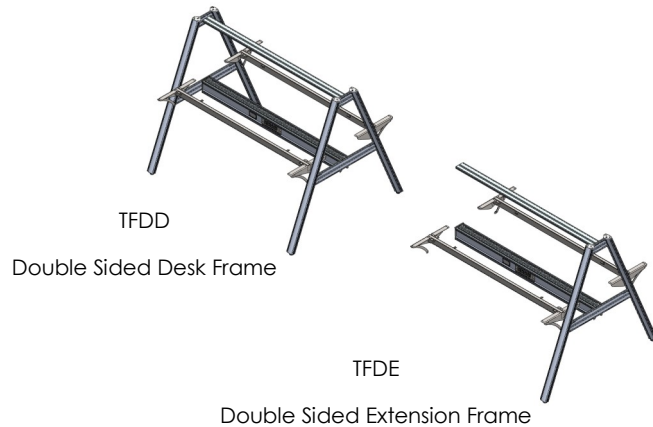
- 2) Pre-configured **Frame Kits** are available to make specifying easy. Choose your desired size and add your **Surfaces** and **Electrical Cables**. To further customize your workspace add dividers and storage.

Required Information:

Frame Kits with Size, Surfaces, Electrical Cables and Finishes

Further Information:

Dividers, Storage and Accessories



OR

- 3) Build your perfect station from scratch. The **Product Map on pages 12/13** contains a complete list of items available to create your workspace. The contextual details shown on **page 5** will help illustrate how various parts are used. Select the appropriate finishes to round out your order.

TR2DE6030 — 2 pack, Double Sided

60" x 30" Worksurfaces, Softscape divider, 4 Simplexes, 1 Data/Tel knockout per side, 120" Basefeed, Grade 1 Finishes.



| QTY | Product Code | Product Description |
|-----|--------------|--|
| 1 | TFDD6049 | Truss, 60"W x 49"H Double Sided Desk, Simplex 1234 - Kit |
| 2 | TWR6030 | Truss, 60"W x 30"D Rectangular Worksurface |
| 1 | TDSS6020D | Truss, 60"W x 20"H Softscape Divider, Double Frame |
| 1 | XEBF84120 | 120 Base Feed, 8 Wire/4 Circuit |
| 2 | XBWM08 | 8" Tray Wire Manager |

TR4DE6030 — 4 pack, Double Sided

60" x 30" Worksurfaces, Softscape divider, 4 Simplexes, 1 Data/Tel knockout per side, 120" Basefeed, Grade 1 Finishes



| QTY | Product Code | Product Description |
|-----|--------------|---|
| 1 | TFDD6049 | Truss, 60"W x 49"H Double Sided Desk, Simplex 1234 - Kit |
| 1 | TFDE6049 | Truss, 60"W x 49"H Double Sided Extension, Simplex 1234 - Kit |
| 4 | TWR6030 | Truss, 60"W x 30"D Rectangular Worksurface |
| 2 | TDSS6020D | Truss, 60"W x 20"H Softscape Divider, Double Frame |
| 1 | XEBF84120 | 120 Base Feed, 8 Wire/4 Circuit |
| 1 | XEIC8460 | 60 Interconnecting Cable, 8 Circuit/4 Wire |
| 4 | XBWM08 | 8" Tray Wire Manager |

TR4DEH6030 — 4 pack, Double Sided with Huddle End

60" x 30" Worksurfaces, Softscape divider, 4 Simplexes, 1 Data/Tel knockout per side, 120" Basefeed, Huddle End, Grade 1 Finishes



| QTY | Product Code | Product Description |
|-----|--------------|---|
| 1 | TFDD6049 | Truss, 60"W x 49"H Double Sided Desk, Simplex 1234 - Kit |
| 1 | TFDE6049 | Truss, 60"W x 49"H Double Sided Extension, Simplex 1234 - Kit |
| 4 | TWR6030 | Truss, 60"W x 30"D Rectangular Worksurface |
| 2 | TDSS6020D | Truss, 60"W x 20"H Softscape Divider, Double Frame |
| 1 | XEBF84120 | 120 Base Feed, 8 Wire/4 Circuit |
| 1 | XEIC8460 | 60 Interconnecting Cable, 8 Circuit/4 Wire |
| 1 | THEA6048 | Truss, 60"W x 48"D Huddle End Worksurface - A Leg |
| 4 | XBWM08 | 8" Tray Wire Manager |

TR4DE2SS6030 — 4 pack, Double Sided with Dual Side Mount Storage

60" x 30" Worksurfaces, Softscape divider, 4 Simplexes, 1 Data/Tel knockout per side, 120" Basefeed, 2 Box/File Side Mount Storage Units, Grade 1 Finishes



| QTY | Product Code | Product Description |
|-----|---------------|---|
| 1 | TFDD6049 | Truss, 60"W x 49"H Double Sided Desk, Simplex 1234 - Kit |
| 1 | TFDE6049 | Truss, 60"W x 49"H Double Sided Extension, Simplex 1234 - Kit |
| 4 | TWR6030 | Truss, 60"W x 30"D Rectangular Worksurface |
| 2 | TDSS6020D | Truss, 60"W x 20"H Softscape Divider, Double Frame |
| 1 | XEBF84120 | 120 Base Feed, 8 Wire/4 Circuit |
| 1 | XEIC8460 | 60 Interconnecting Cable, 8 Circuit/4 Wire |
| 2 | TSSMBF122060D | Truss, 12"W x 20"H x 60"D Side Mount Box File, Double Frame |
| 4 | XBWM08 | 8" Tray Wire Manager |

TR6DE6030 — 6 pack, Double Sided

60" x 30" Worksurfaces, Softscape divider, 4 Simplexes, 1 Data/Tel knockout per side, 120" Basefeed, Grade 1 Finishes



| QTY | Product Code | Product Description |
|-----|--------------|---|
| 1 | TFDD6049 | Truss, 60"W x 49"H Double Sided Desk, Simplex 1234 - Kit |
| 2 | TFDE6049 | Truss, 60"W x 49"H Double Sided Extension, Simplex 1234 - Kit |
| 6 | TWR6030 | Truss, 60"W x 30"D Rectangular Worksurface |
| 3 | TDSS6020D | Truss, 60"W x 20"H Softscape Divider, Double Frame |
| 1 | XEBF84120 | 120 Base Feed, 8 Wire/4 Circuit |
| 2 | XEIC8460 | 60 Interconnecting Cable, 8 Circuit/4 Wire |
| 6 | XBWM08 | 8" Tray Wire Manager |

TR6DEHP6030 — 6 pack, Double Sided with Electrical, Huddle End and Mobile Pedestals

60" x 30" Worksurfaces, Softscape divider, 4 Simplexes, 1 Data/Tel knockout per side, 120" Basefeed, Huddle End, 6 Mobile 12" Wide BF Pedestals, Grade 1 Finishes



| QTY | Product Code | Product Description |
|-----|--------------|---|
| 1 | TFDD6049 | Truss, 60"W x 49"H Double Sided Desk, Simplex 1234 - Kit |
| 2 | TFDE6049 | Truss, 60"W x 49"H Double Sided Extension, Simplex 1234 - Kit |
| 6 | TWR6030 | Truss, 60"W x 30"D Rectangular Worksurface |
| 3 | TDSS6020D | Truss, 60"W x 20"H Softscape Divider, Double Frame |
| 1 | XEBF84120 | 120 Base Feed, 8 Wire/4 Circuit |
| 2 | XEIC8460 | 60 Interconnecting Cable, 8 Circuit/4 Wire |
| 1 | THEA6048 | Truss, 60"W x 48"D Huddle End Worksurface - A Leg |
| 6 | TSBF1220 | Mobile Pedestal, Box/File, w/ Lock, 12W x 20D |
| 6 | XBWM08 | 8" Tray Wire Manager |

TR8DE6030 — 8 pack, Double Sided

60" x 30" Worksurfaces, Softscape divider, 4 Simplexes, 1 Data/Tel knockout per side, 120" Basefeed, Grade 1 finishes



| QTY | Product Code | Product Description |
|-----|--------------|---|
| 1 | TFDD6049 | Truss, 60"W x 49"H Double Sided Desk, Simplex 1234 - Kit |
| 3 | TFDE6049 | Truss, 60"W x 49"H Double Sided Extension, Simplex 1234 - Kit |
| 8 | TWR6030 | Truss, 60"W x 30"D Rectangular Worksurface |
| 4 | TDSS6020D | Truss, 60"W x 20"H Softscape Divider, Double Frame |
| 1 | XEBF84120 | 120 Base Feed, 8 Wire/4 Circuit |
| 3 | XEIC8460 | 60 Interconnecting Cable, 8 Circuit/4 Wire |
| 8 | XBWM08 | 8" Tray Wire Manager |

Frame Kits



TFDD
Double Sided Desk
Frame



TFDE
Double Sided Extension
Frame



TFSD
Single Sided Desk
Frame



TFSE
Single Sided Extension
Frame

Structures



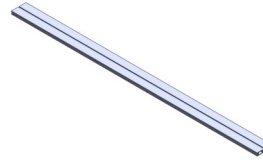
TFAD
Double Frame



TFAS
Single Frame



TFCFS
Cantilever Full Set



TFCB
Cross Beam



TFST
Standard Beam
(Single Frame)

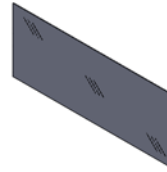


TERN
Raceway
Non-Powered

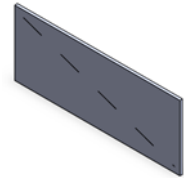


TERP
Raceway
Powered

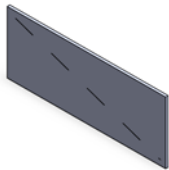
Dividers



TDCA
Acrylic



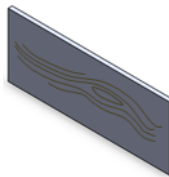
TDSS
Softscape



TDF
Tackable Fabric

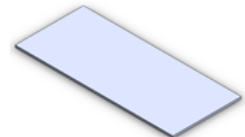


TDFB
Fibrex

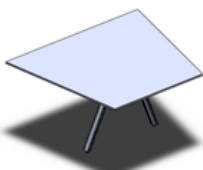


TDL
Thermofused
Laminate

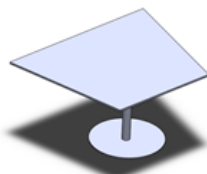
Surfaces



TWR
Rectangular
Worksurface

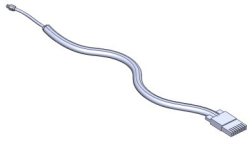


THEA
Huddle End - A Leg

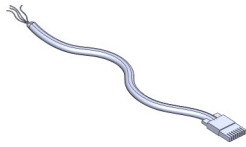


THED
Huddle End - Disc Base

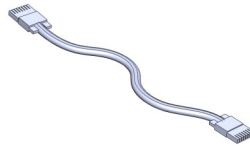
Electrical



XEBFQ
Plug in Base Feed



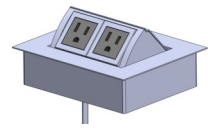
XEBF
Base Feed Cable



XEIC
Interconnect Cable



TACP
Clamp-on Power

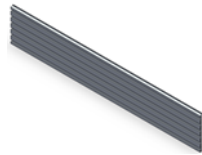


TAHP
Huddle End Power

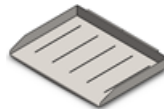
Accessories



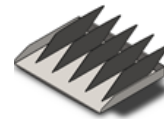
TASO
Slide on Divider



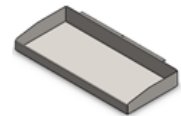
TAAR
Accessory Rail



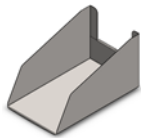
XAPT02
Paper Tray



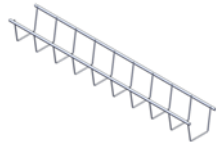
XAPT03
Paper Tray with Dividers



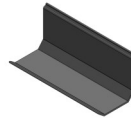
XAPN02
Pencil Tray



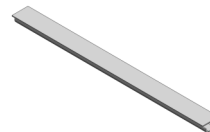
XABT02
Binder Bin



RW-DTRF
Basket Wire Manager

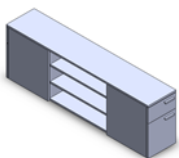


XBWM08
Tray Wire Manager

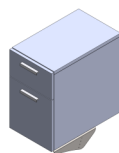


XWGLP
Low Profile Wire Manager

Storage



TSSMBF
Side Mount Storage



TSHBF
Hanging Box / file



TSBF
Mobile Box / File

TFA

A Frame Assemblies



What's Included:
A Frame Assembly.

Finish Options:
Please see www.fluidgroup.com/finishes for finish details

Information Required to Order:
A Frame Code / Structures Finish. Example: **TFA4849/CH**

Note: Complete A Frame Ships Assembled.

| Product Code | Product Description |
|--------------|----------------------------------|
| TFA4849D | Truss, 48"W x 49"H, Double Frame |
| TFA2449S | Truss, 24"W x 49"H, Single Frame |

TFCFS

Cantilever Full Set



What's Included:
Cantilever Full Set, All Necessary Hardware.

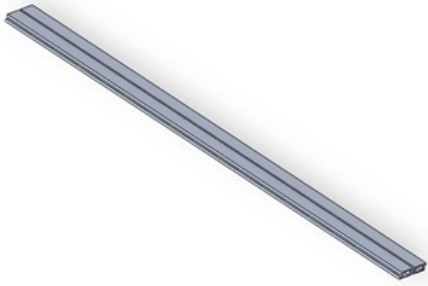
Finish Options:
Please see www.fluidgroup.com/finishes for finish details

Information Required to Order:
Cantilever Full Set Code / Structures Finish. Example: **TFCFS60/CH**

| Product Code | Product Description |
|--------------|---------------------------------|
| TFCFS36 | Truss, 36"W Cantilever Full Set |
| TFCFS42 | Truss, 42"W Cantilever Full Set |
| TFCFS48 | Truss, 48"W Cantilever Full Set |
| TFCFS54 | Truss, 54"W Cantilever Full Set |
| TFCFS60 | Truss, 60"W Cantilever Full Set |
| TFCFS66 | Truss, 66"W Cantilever Full Set |
| TFCFS72 | Truss, 72"W Cantilever Full Set |

TFCB

Cross Beam

What's Included:

Cross Beam, All Necessary Hardware.

Finish Options:Please see www.fluidgroup.com/finishes for finish detailsInformation Required to Order:Cross Beam Code / Structures Finish. Example: **TFCB60D/CH**

| Product Code | Product Description |
|--------------|--------------------------------------|
| TFCB36D | Truss, 36"W Cross Beam, Double Frame |
| TFCB42D | Truss, 42"W Cross Beam, Double Frame |
| TFCB48D | Truss, 48"W Cross Beam, Double Frame |
| TFCB54D | Truss, 54"W Cross Beam, Double Frame |
| TFCB60D | Truss, 60"W Cross Beam, Double Frame |
| TFCB66D | Truss, 66"W Cross Beam, Double Frame |
| TFCB72D | Truss, 72"W Cross Beam, Double Frame |
| TFCB36S | Truss, 36"W Cross Beam, Single Frame |
| TFCB42S | Truss, 42"W Cross Beam, Single Frame |
| TFCB48S | Truss, 48"W Cross Beam, Single Frame |
| TFCB54S | Truss, 54"W Cross Beam, Single Frame |
| TFCB60S | Truss, 60"W Cross Beam, Single Frame |
| TFCB66S | Truss, 66"W Cross Beam, Single Frame |
| TFCB72S | Truss, 72"W Cross Beam, Single Frame |

TFDD

Double Sided Desk Frame



What's Included:

Two A Frame Assemblies, Two Cantilever Full Sets, One Cross Beam, One Powered Raceway, Outside Trim Kit, All Necessary Hardware.

Finish Options:

Please see www.fluidgroup.com/finishes for finish details

Information Required to Order:

Frame Kit Code / Structures Finish. Example: **TFDD6049/CH**

Note: Complete Frame Does Not Ship Assembled.

| Product Code | Product Description |
|--------------|--|
| TFDD3649 | Truss, 36"W x 49"H Double Sided Desk, Simplex 1234 - Kit |
| TFDD4249 | Truss, 42"W x 49"H Double Sided Desk, Simplex 1234 - Kit |
| TFDD4849 | Truss, 48"W x 49"H Double Sided Desk, Simplex 1234 - Kit |
| TFDD5449 | Truss, 54"W x 49"H Double Sided Desk, Simplex 1234 - Kit |
| TFDD6049 | Truss, 60"W x 49"H Double Sided Desk, Simplex 1234 - Kit |
| TFDD6649 | Truss, 66"W x 49"H Double Sided Desk, Simplex 1234 - Kit |
| TFDD7249 | Truss, 72"W x 49"H Double Sided Desk, Simplex 1234 - Kit |

TFDE

Double Sided Extension Frame



What's Included:

Two A Frame Assemblies, Two Cantilever Full Sets, One Cross Beam, One Powered Raceway, All Necessary Hardware.

Finish Options:

Please see www.fluidgroup.com/finishes for finish details

Information Required to Order:

Frame Kit Code / Structures Finish. Example: **TFDE6049/CH**

Note: Complete Frame Does Not Ship Assembled.

| Product Code | Product Description |
|--------------|---|
| TFDE3649 | Truss, 36"W x 49"H Double Sided Extension, Simplex 1234 - Kit |
| TFDE4249 | Truss, 42"W x 49"H Double Sided Extension, Simplex 1234 - Kit |
| TFDE4849 | Truss, 48"W x 49"H Double Sided Extension, Simplex 1234 - Kit |
| TFDE5449 | Truss, 54"W x 49"H Double Sided Extension, Simplex 1234 - Kit |
| TFDE6049 | Truss, 60"W x 49"H Double Sided Extension, Simplex 1234 - Kit |
| TFDE6649 | Truss, 66"W x 49"H Double Sided Extension, Simplex 1234 - Kit |
| TFDE7249 | Truss, 72"W x 49"H Double Sided Extension, Simplex 1234 - Kit |

TFSD

Single Sided Desk Frame



What's Included:

Two A Frame Assemblies, Two Cantilever Full Sets, One Cross Beam, One Powered Raceway, Outside Trim Kit, All Necessary Hardware.

Finish Options:

Please see www.fluidgroup.com/finishes for finish details

Information Required to Order:

Frame Kit Code / Structures Finish. Example: **TFDD6049/CH**

Note: Complete Frame Does Not Ship Assembled.

Product Code

Product Description

| | |
|----------|--|
| TFSD3649 | Truss, 36"W x 49"H Single Sided Desk, Simplex 1234 - Kit |
| TFSD4249 | Truss, 42"W x 49"H Single Sided Desk, Simplex 1234 - Kit |
| TFSD4849 | Truss, 48"W x 49"H Single Sided Desk, Simplex 1234 - Kit |
| TFSD5449 | Truss, 54"W x 49"H Single Sided Desk, Simplex 1234 - Kit |
| TFSD6049 | Truss, 60"W x 49"H Single Sided Desk, Simplex 1234 - Kit |
| TFSD6649 | Truss, 66"W x 49"H Single Sided Desk, Simplex 1234 - Kit |
| TFSD7249 | Truss, 72"W x 49"H Single Sided Desk, Simplex 1234 - Kit |

TFSE

Single Sided Extension Frame



What's Included:

Two A Frame Assemblies, Two Cantilever Full Sets, One Cross Beam, One Powered Raceway, All Necessary Hardware.

Finish Options:

Please see www.fluidgroup.com/finishes for finish details

Information Required to Order:

Frame Kit Code / Structures Finish. Example: **TFDE6049/CH**

Note: Complete Frame Does Not Ship Assembled.

Product Code

Product Description

| | |
|----------|---|
| TFSE3649 | Truss, 36"W x 49"H Single Sided Extension, Simplex 1234 - Kit |
| TFSE4249 | Truss, 42"W x 49"H Single Sided Extension, Simplex 1234 - Kit |
| TFSE4849 | Truss, 48"W x 49"H Single Sided Extension, Simplex 1234 - Kit |
| TFSE5449 | Truss, 54"W x 49"H Single Sided Extension, Simplex 1234 - Kit |
| TFSE6049 | Truss, 60"W x 49"H Single Sided Extension, Simplex 1234 - Kit |
| TFSE6649 | Truss, 66"W x 49"H Single Sided Extension, Simplex 1234 - Kit |
| TFSE7249 | Truss, 72"W x 49"H Single Sided Extension, Simplex 1234 - Kit |

TFST

Standard Beam



What's Included:

Standard Beam, All Necessary Hardware.

Finish Options:

Please see www.fluidgroup.com/finishes for finish details

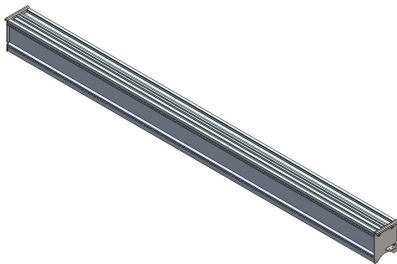
Information Required to Order:

Standard Beam Code / Structures Finish. Example: **TFST60S/CH**

| Product Code | Product Description |
|--------------|---|
| TFST36S | Truss, 36"W Standard Beam, Single Frame |
| TFST42S | Truss, 42"W Standard Beam, Single Frame |
| TFST48S | Truss, 48"W Standard Beam, Single Frame |
| TFST54S | Truss, 54"W Standard Beam, Single Frame |
| TFST60S | Truss, 60"W Standard Beam, Single Frame |
| TFST66S | Truss, 66"W Standard Beam, Single Frame |
| TFST72S | Truss, 72"W Standard Beam, Single Frame |

TERN

Raceway - Non Powered



What's Included:

Non-Powered Raceway, All Necessary Hardware.

Finish Options:

Please see www.fluidgroup.com/finishes for finish details

Information Required to Order:

Raceway Code / Structures Finish. Example: **TERN60/CH**

| Product Code | Product Description |
|--------------|---------------------------------|
| TERN36 | Truss, 36"W Raceway Non-Powered |
| TERN42 | Truss, 42"W Raceway Non-Powered |
| TERN48 | Truss, 48"W Raceway Non-Powered |
| TERN54 | Truss, 54"W Raceway Non-Powered |
| TERN60 | Truss, 60"W Raceway Non-Powered |
| TERN66 | Truss, 66"W Raceway Non-Powered |
| TERN72 | Truss, 72"W Raceway Non-Powered |

TERP

Raceway - Powered

What's Included:

Powered Raceway, Internal Electrical Components, Data Cover Plate, All Necessary Hardware.

Finish Options:

Please see www.fluidgroup.com/finishes for finish details

Information Required to Order:

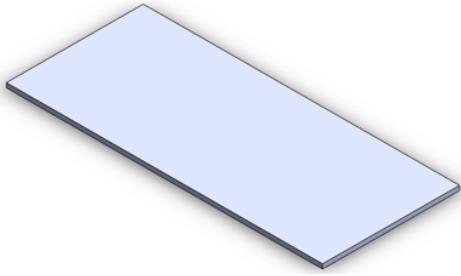
Raceway Code / Structures Finish. Example: **TERP60D1234/CH**

Note: Base Feed and Interconnect Cables Are Specified Separately. See page 25.

| Product Code | Product Description |
|--------------|--|
| TERP36D1111 | Truss, 36"W Raceway Powered 3w/1c Simplex 1111, Double Frame |
| TERP42D1111 | Truss, 42"W Raceway Powered 3w/1c Simplex 1111, Double Frame |
| TERP48D1111 | Truss, 48"W Raceway Powered 3w/1c Simplex 1111, Double Frame |
| TERP54D1111 | Truss, 54"W Raceway Powered 3w/1c Simplex 1111, Double Frame |
| TERP60D1111 | Truss, 60"W Raceway Powered 3w/1c Simplex 1111, Double Frame |
| TERP66D1111 | Truss, 66"W Raceway Powered 3w/1c Simplex 1111, Double Frame |
| TERP72D1111 | Truss, 72"W Raceway Powered 3w/1c Simplex 1111, Double Frame |
| TERP36S1111 | Truss, 36"W Raceway Powered 3w/1c Simplex 1111, Single Frame |
| TERP42S1111 | Truss, 42"W Raceway Powered 3w/1c Simplex 1111, Single Frame |
| TERP48S1111 | Truss, 48"W Raceway Powered 3w/1c Simplex 1111, Single Frame |
| TERP54S1111 | Truss, 54"W Raceway Powered 3w/1c Simplex 1111, Single Frame |
| TERP60S1111 | Truss, 60"W Raceway Powered 3w/1c Simplex 1111, Single Frame |
| TERP66S1111 | Truss, 66"W Raceway Powered 3w/1c Simplex 1111, Single Frame |
| TERP72S1111 | Truss, 72"W Raceway Powered 3w/1c Simplex 1111, Single Frame |
| TERP36D1234 | Truss, 36"W Raceway Powered 8w/4c Simplex 1234, Double Frame |
| TERP42D1234 | Truss, 42"W Raceway Powered 8w/4c Simplex 1234, Double Frame |
| TERP48D1234 | Truss, 48"W Raceway Powered 8w/4c Simplex 1234, Double Frame |
| TERP54D1234 | Truss, 54"W Raceway Powered 8w/4c Simplex 1234, Double Frame |
| TERP60D1234 | Truss, 60"W Raceway Powered 8w/4c Simplex 1234, Double Frame |
| TERP66D1234 | Truss, 66"W Raceway Powered 8w/4c Simplex 1234, Double Frame |
| TERP72D1234 | Truss, 72"W Raceway Powered 8w/4c Simplex 1234, Double Frame |
| TERP36S1234 | Truss, 36"W Raceway Powered 8w/4c Simplex 1234, Single Frame |
| TERP42S1234 | Truss, 42"W Raceway Powered 8w/4c Simplex 1234, Single Frame |
| TERP48S1234 | Truss, 48"W Raceway Powered 8w/4c Simplex 1234, Single Frame |
| TERP54S1234 | Truss, 54"W Raceway Powered 8w/4c Simplex 1234, Single Frame |
| TERP60S1234 | Truss, 60"W Raceway Powered 8w/4c Simplex 1234, Single Frame |
| TERP66S1234 | Truss, 66"W Raceway Powered 8w/4c Simplex 1234, Single Frame |
| TERP72S1234 | Truss, 72"W Raceway Powered 8w/4c Simplex 1234, Single Frame |

TWR

Rectangular Worksurface



What's Included:
Rectangular Worksurface.

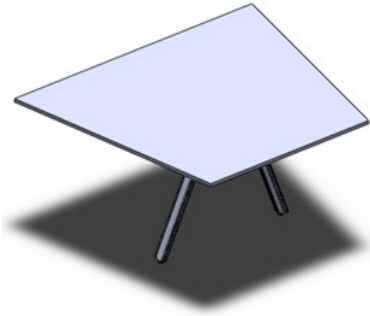
Finish Options:
Please see www.fluidgroup.com/finishes for finish details

Information Required to Order:
Worksurface Code / Worksurface Finish. Example: **TWR6030/NW**

| Product Code | Product Description |
|--------------|--|
| TWR3624 | Truss, 36"W x 24"D Rectangular Worksurface |
| TWR4224 | Truss, 42"W x 24"D Rectangular Worksurface |
| TWR4824 | Truss, 48"W x 24"D Rectangular Worksurface |
| TWR5424 | Truss, 54"W x 24"D Rectangular Worksurface |
| TWR6024 | Truss, 60"W x 24"D Rectangular Worksurface |
| TWR6624 | Truss, 66"W x 24"D Rectangular Worksurface |
| TWR7224 | Truss, 72"W x 24"D Rectangular Worksurface |
| TWR3630 | Truss, 36"W x 30"D Rectangular Worksurface |
| TWR4230 | Truss, 42"W x 30"D Rectangular Worksurface |
| TWR4830 | Truss, 48"W x 30"D Rectangular Worksurface |
| TWR5430 | Truss, 54"W x 30"D Rectangular Worksurface |
| TWR6030 | Truss, 60"W x 30"D Rectangular Worksurface |
| TWR6630 | Truss, 66"W x 30"D Rectangular Worksurface |
| TWR7230 | Truss, 72"W x 30"D Rectangular Worksurface |

THEA

Huddle End - A Leg



What's Included:

Huddle End Surface, A Leg, Cantilevers to connect to A Frame, All Necessary Hardware.

Finish Options:

Please see www.fluidgroup.com/finishes for finish details

Information Required to Order:

Huddle End Code / Worksurface Finish / Structures Finish.

Example: **THEA6048/NW/CH**

Product Code

Product Description

THEA4848

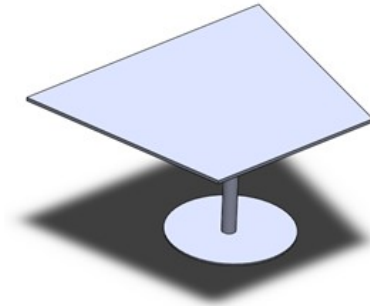
Truss, 48"W x 48"D Huddle End Worksurface - A Leg

THEA6048

Truss, 60"W x 48"D Huddle End Worksurface - A Leg

THEA

Huddle End - Disc Base



What's Included:

Huddle End Surface, Disc Base, Cantilevers to connect to A Frame, All Necessary Hardware.

Finish Options:

Please see www.fluidgroup.com/finishes for finish details

Information Required to Order:

Huddle End Code / Worksurface Finish / Structures Finish.

Example: **THED6048/NW/CH**

Product Code

Product Description

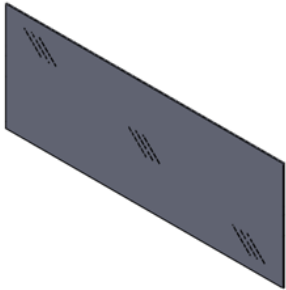
THED4848

Truss, 48"W x 48"D Huddle End Worksurface - Disc Base

THED6048

Truss, 60"W x 48"D Huddle End Worksurface - Disc Base

TDAC Acrylic Divider



What's Included:
Acrylic Divider.

Finish Options:
Please see www.fluidgroup.com/finishes for finish details

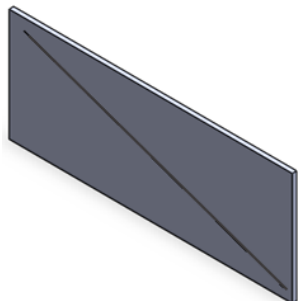
Information Required to Order:
Acrylic Divider Code / Acrylic Finish. Example: **TDAC6020D/FA**

Note: Lower Acrylic Dividers are Only Available on Single Sided Stations.

| Product Code | Product Description |
|--------------|--|
| TDAC3620D | Truss, 36"W x 20"H Acrylic Divider, Double Frame |
| TDAC4220D | Truss, 42"W x 20"H Acrylic Divider, Double Frame |
| TDAC4820D | Truss, 48"W x 20"H Acrylic Divider, Double Frame |
| TDAC5420D | Truss, 54"W x 20"H Acrylic Divider, Double Frame |
| TDAC6020D | Truss, 60"W x 20"H Acrylic Divider, Double Frame |
| TDAC6620D | Truss, 66"W x 20"H Acrylic Divider, Double Frame |
| TDAC7220D | Truss, 72"W x 20"H Acrylic Divider, Double Frame |
| TDAC3620S | Truss, 36"W x 20"H Acrylic Divider, Single Frame |
| TDAC4220S | Truss, 42"W x 20"H Acrylic Divider, Single Frame |
| TDAC4820S | Truss, 48"W x 20"H Acrylic Divider, Single Frame |
| TDAC5420S | Truss, 54"W x 20"H Acrylic Divider, Single Frame |
| TDAC6020S | Truss, 60"W x 20"H Acrylic Divider, Single Frame |
| TDAC6620S | Truss, 66"W x 20"H Acrylic Divider, Single Frame |
| TDAC7220S | Truss, 72"W x 20"H Acrylic Divider, Single Frame |
| TDAC3619S | Truss, 36"W x 19"H Acrylic Lower Divider, Single Frame |
| TDAC4219S | Truss, 42"W x 19"H Acrylic Lower Divider, Single Frame |
| TDAC4819S | Truss, 48"W x 19"H Acrylic Lower Divider, Single Frame |
| TDAC5419S | Truss, 54"W x 19"H Acrylic Lower Divider, Single Frame |
| TDAC6019S | Truss, 60"W x 19"H Acrylic Lower Divider, Single Frame |
| TDAC6619S | Truss, 66"W x 19"H Acrylic Lower Divider, Single Frame |
| TDAC7219S | Truss, 72"W x 19"H Acrylic Lower Divider, Single Frame |

TDSS

Softscape Divider



What's Included:

Softscape Divider, Panel Retainer Extrusion.

Finish Options:

Please see www.fluidgroup.com/finishes for finish details

Information Required to Order:

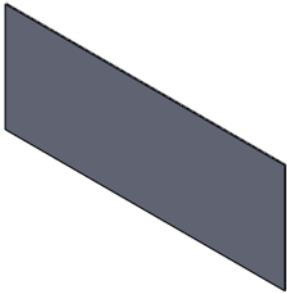
Softscape Divider Code / Softscape Finish. Example: **TDSS6020/SS06**

Note: Lower Softscape Dividers are Only Available on Single Sided Stations.

| Product Code | Product Description |
|--------------|--|
| TDSS3620D | Truss, 36"W x 20"H Softscape Divider, Double Frame |
| TDSS4220D | Truss, 42"W x 20"H Softscape Divider, Double Frame |
| TDSS4820D | Truss, 48"W x 20"H Softscape Divider, Double Frame |
| TDSS5420D | Truss, 54"W x 20"H Softscape Divider, Double Frame |
| TDSS6020D | Truss, 60"W x 20"H Softscape Divider, Double Frame |
| TDSS6620D | Truss, 66"W x 20"H Softscape Divider, Double Frame |
| TDSS7220D | Truss, 72"W x 20"H Softscape Divider, Double Frame |
| TDSS3620S | Truss, 36"W x 20"H Softscape Divider, Single Frame |
| TDSS4220S | Truss, 42"W x 20"H Softscape Divider, Single Frame |
| TDSS4820S | Truss, 48"W x 20"H Softscape Divider, Single Frame |
| TDSS5420S | Truss, 54"W x 20"H Softscape Divider, Single Frame |
| TDSS6020S | Truss, 60"W x 20"H Softscape Divider, Single Frame |
| TDSS6620S | Truss, 66"W x 20"H Softscape Divider, Single Frame |
| TDSS7220S | Truss, 72"W x 20"H Softscape Divider, Single Frame |
| TDSS3619S | Truss, 36"W x 19"H Softscape Lower Divider, Single Frame |
| TDSS4219S | Truss, 42"W x 19"H Softscape Lower Divider, Single Frame |
| TDSS4819S | Truss, 48"W x 19"H Softscape Lower Divider, Single Frame |
| TDSS5419S | Truss, 54"W x 19"H Softscape Lower Divider, Single Frame |
| TDSS6019S | Truss, 60"W x 19"H Softscape Lower Divider, Single Frame |
| TDSS6619S | Truss, 66"W x 19"H Softscape Lower Divider, Single Frame |
| TDSS7219S | Truss, 72"W x 19"H Softscape Lower Divider, Single Frame |

TDFB

FibreX Divider



What's Included:
FibreX Divider.

Finish Options:
Please see www.fluidgroup.com/finishes for finish details

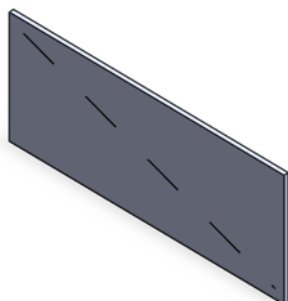
Information Required to Order:
FibreX Divider Code / FibreX Finish. Example: **TDFB6020D/FHM**

Note: FibreX Dividers are Only Available on Single Sided Stations.

| Product Code | Product Description |
|--------------|---|
| TDFB3620S | Truss, 36"W x 20"H FibreX Divider, Single Frame |
| TDFB4220S | Truss, 42"W x 20"H FibreX Divider, Single Frame |
| TDFB4820S | Truss, 48"W x 20"H FibreX Divider, Single Frame |
| TDFB5420S | Truss, 54"W x 20"H FibreX Divider, Single Frame |
| TDFB6020S | Truss, 60"W x 20"H FibreX Divider, Single Frame |
| TDFB6620S | Truss, 66"W x 20"H FibreX Divider, Single Frame |
| TDFB7220S | Truss, 72"W x 20"H FibreX Divider, Single Frame |
| TDFB3619S | Truss, 36"W x 19"H FibreX Lower Divider, Single Frame |
| TDFB4219S | Truss, 42"W x 19"H FibreX Lower Divider, Single Frame |
| TDFB4819S | Truss, 48"W x 19"H FibreX Lower Divider, Single Frame |
| TDFB5419S | Truss, 54"W x 19"H FibreX Lower Divider, Single Frame |
| TDFB6019S | Truss, 60"W x 19"H FibreX Lower Divider, Single Frame |
| TDFB6619S | Truss, 66"W x 19"H FibreX Lower Divider, Single Frame |
| TDFB7219S | Truss, 72"W x 19"H FibreX Lower Divider, Single Frame |

TDFT

Tackable Fabric Divider



What's Included:

Tackable Fabric Divider, Panel Retainer Extrusion.

Finish Options:

Please see www.fluidgroup.com/finishes for finish details

Information Required to Order:

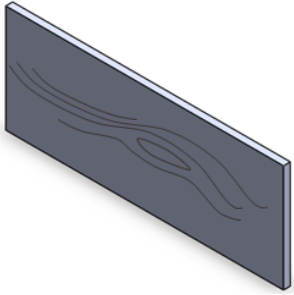
Tackable Fabric Divider Code / Fabric Finish. Example: **TDTF6020/xx** (see website for color options).

Note: Lower Tackable Fabric Dividers are Only Available on Single Sided Stations.

| Product Code | Product Description |
|--------------|--|
| TDTF3620D | Truss, 36"W x 20"H Tackable Fabric Divider, Double Frame |
| TDTF4220D | Truss, 42"W x 20"H Tackable Fabric Divider, Double Frame |
| TDTF4820D | Truss, 48"W x 20"H Tackable Fabric Divider, Double Frame |
| TDTF5420D | Truss, 54"W x 20"H Tackable Fabric Divider, Double Frame |
| TDTF6020D | Truss, 60"W x 20"H Tackable Fabric Divider, Double Frame |
| TDTF6620D | Truss, 66"W x 20"H Tackable Fabric Divider, Double Frame |
| TDTF7220D | Truss, 72"W x 20"H Tackable Fabric Divider, Double Frame |
| TDTF3620S | Truss, 36"W x 20"H Tackable Fabric Divider, Single Frame |
| TDTF4220S | Truss, 42"W x 20"H Tackable Fabric Divider, Single Frame |
| TDTF4820S | Truss, 48"W x 20"H Tackable Fabric Divider, Single Frame |
| TDTF5420S | Truss, 54"W x 20"H Tackable Fabric Divider, Single Frame |
| TDTF6020S | Truss, 60"W x 20"H Tackable Fabric Divider, Single Frame |
| TDTF6620S | Truss, 66"W x 20"H Tackable Fabric Divider, Single Frame |
| TDTF7220S | Truss, 72"W x 20"H Tackable Fabric Divider, Single Frame |
| TDTF3619S | Truss, 36"W x 19"H Tackable Fabric Lower Divider, Single Frame |
| TDTF4219S | Truss, 42"W x 19"H Tackable Fabric Lower Divider, Single Frame |
| TDTF4819S | Truss, 48"W x 19"H Tackable Fabric Lower Divider, Single Frame |
| TDTF5419S | Truss, 54"W x 19"H Tackable Fabric Lower Divider, Single Frame |
| TDTF6019S | Truss, 60"W x 19"H Tackable Fabric Lower Divider, Single Frame |
| TDTF6619S | Truss, 66"W x 19"H Tackable Fabric Lower Divider, Single Frame |
| TDTF7219S | Truss, 72"W x 19"H Tackable Fabric Lower Divider, Single Frame |

TDTL

Thermofused Laminate Divider



What's Included:

Thermofused Laminate Divider, Panel Retainer Extrusion.

Finish Options:

Please see www.fluidgroup.com/finishes for finish details

Information Required to Order:

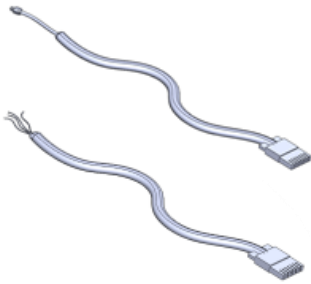
TFL Divider Code / TFL Finish. Example: **TDTL6020S/NW**

Note: Thermofused Laminate Lower Dividers are Only Available on Single Sided Stations.

| Product Code | Product Description |
|--------------|---|
| TDTL3620S | Truss, 36"W x 20"H Thermofused Laminate Lower Divider, Single Frame |
| TDTL4220S | Truss, 42"W x 20"H Thermofused Laminate Lower Divider, Single Frame |
| TDTL4820S | Truss, 48"W x 20"H Thermofused Laminate Lower Divider, Single Frame |
| TDTL5420S | Truss, 54"W x 20"H Thermofused Laminate Lower Divider, Single Frame |
| TDTL6020S | Truss, 60"W x 20"H Thermofused Laminate Lower Divider, Single Frame |
| TDTL6620S | Truss, 66"W x 20"H Thermofused Laminate Lower Divider, Single Frame |
| TDTL7220S | Truss, 72"W x 20"H Thermofused Laminate Lower Divider, Single Frame |

XEBF

Base Feed Cables



What's Included:
Base Feed Cable.

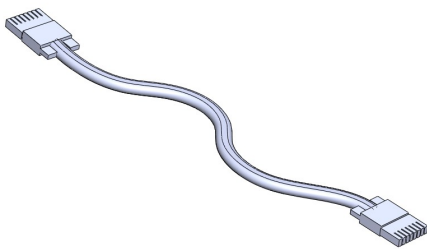
Finish Options:
Not Applicable.

Information Required to Order:
Base Feed Code. Example: **XEBF8472**

| Product Code | Product Description |
|--------------|---|
| XEBFQ72 | 72 Base Feed, 3 Wire / 1 Circuit Plug In |
| XEBFQ120 | 120 Base Feed, 3 Wire / 1 Circuit Plug In |
| XEBF8472 | 72 Base Feed, 8 Wire/4 Circuit |
| XEBF84120 | 120 Base Feed, 8 Wire/4 Circuit |

XEIC

Interconnect Cable



What's Included:
Interconnect Cable.

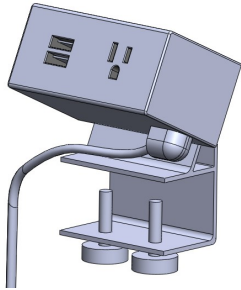
Finish Options:
Not Applicable.

Information Required to Order:
Interconnect Cable Code. Example: **XEIC8460**

| Product Code | Product Description |
|--------------|--|
| XEIC8436 | 36 Interconnecting Cable, 8 Circuit/4 Wire |
| XEIC8442 | 42 Interconnecting Cable, 8 Circuit/4 Wire |
| XEIC8448 | 48 Interconnecting Cable, 8 Circuit/4 Wire |
| XEIC8454 | 54 Interconnecting Cable, 8 Circuit/4 Wire |
| XEIC8460 | 60 Interconnecting Cable, 8 Circuit/4 Wire |
| XEIC8466 | 66 Interconnecting Cable, 8 Circuit/4 Wire |
| XEIC8472 | 72 Interconnecting Cable, 8 Circuit/4 Wire |

TACP

Clamp-on Power



What's Included:
Clamp-on Power Module.

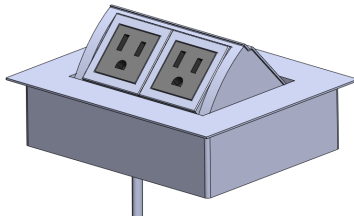
Finish Options:
Please see www.fluidgroup.com/finishes for finish details

Information Required to Order:
Clamp-on Module Code / Electrical Module Finish. Example: **TACPB/WH**.

| Product Code | Product Description |
|--------------|---------------------------------------|
| TACPA | Truss, Clamp-on Power, 2 Power |
| TACPB | Truss, Clamp On Power, 1 Power / 1USB |

TAHP

Huddle End Power



What's Included:
Huddle End Power Module.

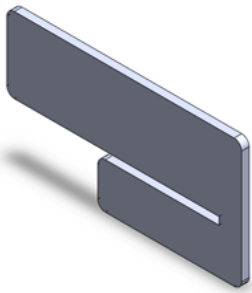
Finish Options:
Please see www.fluidgroup.com/finishes for finish details

Information Required to Order:
Huddle End Module Code / Electrical Module Finish. Example: **TAHPC/ANO**

| Product Code | Product Description |
|--------------|--|
| TAHPA | Truss, Huddle End Power, 2 Power / 2 Data |
| TAHPB | Truss, Huddle End Power, 2 Power / 1 USB / 1 Data |
| TAHPC | Truss, Huddle End Power, 4 Power |
| TAHPD | Truss, Huddle End Power, 2 Power / 1 USB / 1 HDMI |
| TAHPE | Truss, Huddle End Power, 2 Power / 1 USB / 1 CAT 6 |

TASO

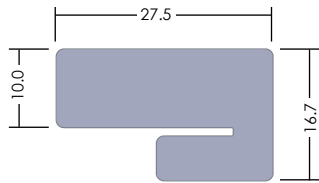
Slide-on Divider



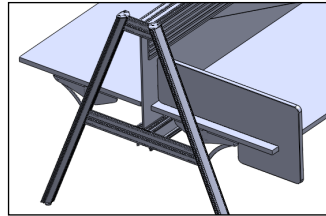
What's Included:
Slide-on Divider

Finish Options:
Please see www.fluidgroup.com/finishes for finish details

Information Required to Order:
Slide-on Divider Code / Accessory-TASO Finish. Example: **TASOR3010/SS06**



TASOR2410



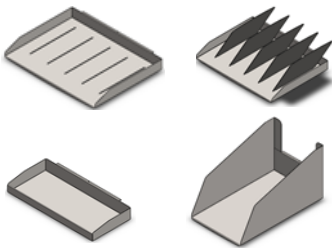
Product Code

Product Description

| | |
|-----------|--|
| TASOR2410 | Truss, 24"W x 10"H Slide-On Divider, Rectangular |
| TASOR3010 | Truss, 30"W x 10"H Slide-On Divider, Rectangular |

XA

Accessories



What's Included:
Accessory. Note: Accessory rail to be Purchased Separately. See page 30

Finish Options:
Please see www.fluidgroup.com/finishes for finish details

Information Required to Order:
Accessory Code / Accessory Finish. Example: **XAPT02/CH**

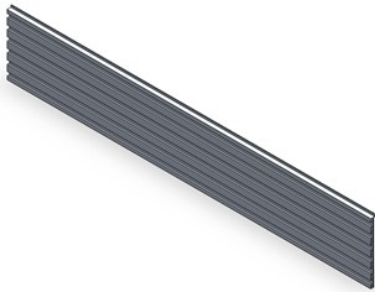
Product Code

Product Description

| | |
|--------|---------------------------------|
| XAPT02 | Paper Tray, Letter Size – Metal |
| XAPT03 | Paper Tray with 5 Dividers |
| XAPN02 | Utility/Pencil Tray |
| XABT02 | Binder Bin – Metal |

TAAR

Accessory Rail



What's Included:
Accessory Rail.

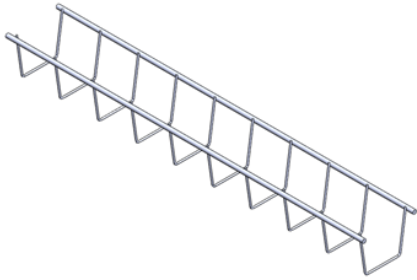
Finish Options:
Please see www.fluidgroup.com/finishes for finish details

Information Required to Order:
Accessory Rail Code / Structures Finish. Example: **TAAR60D/CH**

| Product Code | Product Description |
|--------------|--|
| TAAR36D | Truss, 36"W Accessory Rail, Double Frame |
| TAAR42D | Truss, 42"W Accessory Rail, Double Frame |
| TAAR48D | Truss, 48"W Accessory Rail, Double Frame |
| TAAR54D | Truss, 54"W Accessory Rail, Double Frame |
| TAAR60D | Truss, 60"W Accessory Rail, Double Frame |
| TAAR66D | Truss, 66"W Accessory Rail, Double Frame |
| TAAR72D | Truss, 72"W Accessory Rail, Double Frame |
| TAAR36S | Truss, 36"W Accessory Rail, Single Frame |
| TAAR42S | Truss, 42"W Accessory Rail, Single Frame |
| TAAR48S | Truss, 48"W Accessory Rail, Single Frame |
| TAAR54S | Truss, 54"W Accessory Rail, Single Frame |
| TAAR60S | Truss, 60"W Accessory Rail, Single Frame |
| TAAR66S | Truss, 66"W Accessory Rail, Single Frame |
| TAAR72S | Truss, 72"W Accessory Rail, Single Frame |

RW-DTRF

Basket Wire Manager



What's Included:
Basket Wire Manager.

Finish Options:
Please see www.fluidgroup.com/finishes for finish details

Information Required to Order:
Basket Wire Manager Code / Accessory Finish. Example: **RW-DTRF/CH**

Product Code

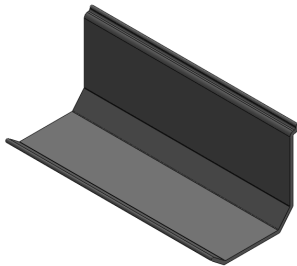
Product Description

RW-DTRF

Basket Wire Manager

XBWM08

Tray Wire Manager



What's Included:
Tray Wire Manager.

Finish Options:
Please see www.fluidgroup.com/finishes for finish details

Information Required to Order:
Basket Wire Manager Code. Example: **XBWM08**

Product Code

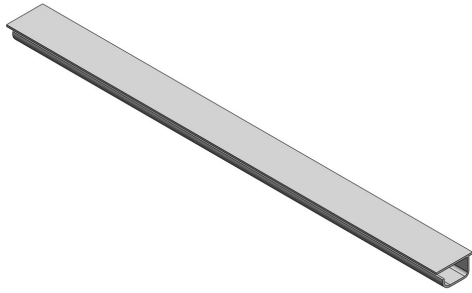
Product Description

XBWM08

8" Tray Wire Manager

XWGLP

Low Profile Wire Manager



What's Included:

Low Profile Wire Manager, All Necessary Hardware.

Finish Options:

Not Applicable. Light Grey Only

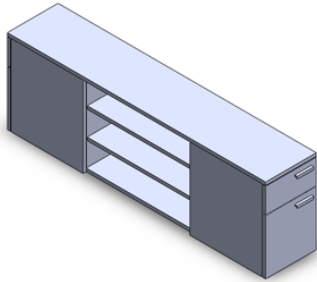
Information Required to Order:

Low Profile Wire Manager Code. Example: **XWGLP60**

| Product Code | Product Description |
|--------------|------------------------------|
| XWGLP24 | 24" Low Profile Wire Manager |
| XWGLP30 | 30" Low Profile Wire Manager |
| XWGLP36 | 36" Low Profile Wire Manager |
| XWGLP42 | 42" Low Profile Wire Manager |
| XWGLP48 | 48" Low Profile Wire Manager |
| XWGLP54 | 54" Low Profile Wire Manager |
| XWGLP60 | 60" Low Profile Wire Manager |
| XWGLP66 | 66" Low Profile Wire Manager |
| XWGLP72 | 72" Low Profile Wire Manager |

TSSMBF

Side Mount Storage



What's Included:

Side Mount Storage Unit, Cantilever to Connect to A Frame, All Necessary Hardware.

Finish Options:

Please see www.fluidgroup.com/finishes for finish details

Information Required to Order:

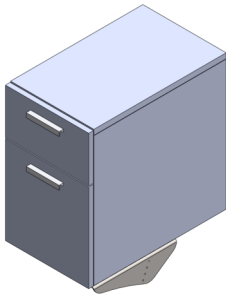
Side Mount Storage Code / Storage Top, Contrast, Base and Handle Finish.
Example: **TSSMBF122030D/NW/NW/CH/B1**

Note: Side Mount Storage Units are Only Available on Double Sided Stations.

| Product Code | Product Description |
|---------------|---|
| TSSMBF122048D | Truss, 12"W x 20"H x 48"D Side Mount Box File, Double Frame |
| TSSMBF122060D | Truss, 12"W x 20"H x 60"D Side Mount Box File, Double Frame |

TSHBF

Hanging Box File Pedestal



What's Included:

Hanging Box File Pedestal , Cantilever to Connect to A Frame, All Necessary Hardware.

Finish Options:

Please see www.fluidgroup.com/finishes for finish details

Information Required to Order:

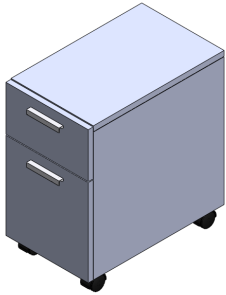
Hanging Box File Pedestal Code / Storage Top, Contrast, Base and Handle Finish.
Example: **TSHBF1220/NW/NW/CH/B1**

Note: Bottom of unit sits 21.3" below worksurface, including worksurface mounting bracket (not shown).

| Product Code | Product Description |
|--------------|--|
| TSHBF1218 | Hanging Pedestal, Box/File, w/ Lock, 12W x 20H x 18D |

TSBF

Mobile Box File Pedestal



What's Included:
Mobile Box File Pedestal.

Finish Options:
Please see www.fluidgroup.com/finishes for finish details

Information Required to Order:
Mobile Box File Pedestal Code / Storage Top, Contrast, Base and Handle Finish.
Example: **TSBF1220/NW/NW/CH/B1**

| Product Code | Product Description |
|--------------|--|
| TSBF1220 | Mobile Pedestal, Box/File, w/ Lock, 12W x 22.75H x 20D |
| TSBF1620 | Mobile Pedestal, Box/File, w/ Lock, 16W x 22.75H x 20D |

TRUSS

How to Order - Please send all purchase orders to order@fluidgroup.com or fax to 1.866.769.6057.

Questions - Call us toll free at 1.866.933.5258.

Please see www.fluidgroup.com for all information including:

- Terms & conditions
- Warranty information
- Local representation information
- Finishes & Resources

Thank-you for choosing fluidconcepts!

Fluidconcept & design inc.
96 Planchet Rd.
Concord Ontario Canada
L4K 2C7

TF. 1.866.933.5258
Fax. 1.866.789.6057
www.fluidgroup.com
order@fluidgroup.com

