

Sophi

Tables

Product Guide



Sophi

An elegantly designed modular table system

for private office, benching, boardroom and meeting spaces.
Sophi features die cast aluminum legs in a beautiful chrome finish connected to a modular aluminum frame.





How To Specify Sophi Tables

There are four items to consider when specifying a Sophi Table:

Table Code / Corner Detail / Surface Finish / Electrical Knockout Position and Size

The example below illustrates a table that is 48" x 120" long with Square corners. Silverwood Thermofused laminate has been chosen for the surface finish. This particular table size will allow for two electrical modules. In this case, the "A" sized knockout in both positions is required.

Example Sophi Table Specification:

SOP48120/S/SW/1A/2A

↑ Electrical Knockout Position and Size (see page 6)
 ↑ Surface Finish (see www.fluidconcepts.ca/Furniture-Finishes-s/46.htm)
 ↑ Corner Detail (see page 4)
 ↑ Table Code (see pages 8 -13)

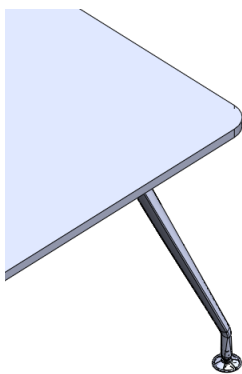
Please Note: Electrical Modules Must Be Ordered Separately

Corner Detail

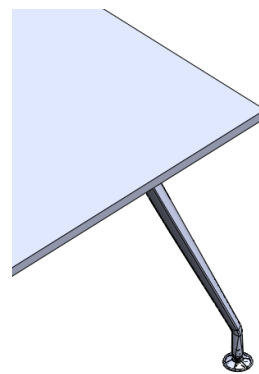
Sophi can be ordered with either Square or 2.5" Radiused corners on the surface.

If Radiused Corners are required, please add \$110 List.

Radiused Corner Code: **R**



Square Corner Code: **S**



Finishes

Please see <https://www.fluidconcepts.ca/Furniture-Finishes-s/46.htm>

Example Sophi Table Specification:

SOP48120/**S**/SW/1A/2A

↑
Square Corner Detail is required in this example.

Note: For Radiused Corners, please add \$100 list.

Example Sophi Table Specification:

SOP48120/S/**SW**/1A/2A

↑
Silverwood Thermofused Laminate is required in this example.

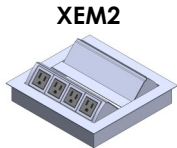
Note: If HPL is required, code would be: **HPSW**

Electrical Module Knockout Position and Size

When specifying table which requires an Electrical Module, the knockout **position** and **size** must be indicated.

Since one table can have multiple positions or knockout sizes (see triple surface table), each location must be specified.

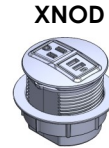
As an example, SOP48120/S/SW/**1A/2A** is a 48" x 120" table with Square corners, Silverwood laminate with a knockout for a XEM2 in each position.



Knockout Size Code: A
(Not available in Position 4)



Knockout Size Code: B
(Not available in Position 4)

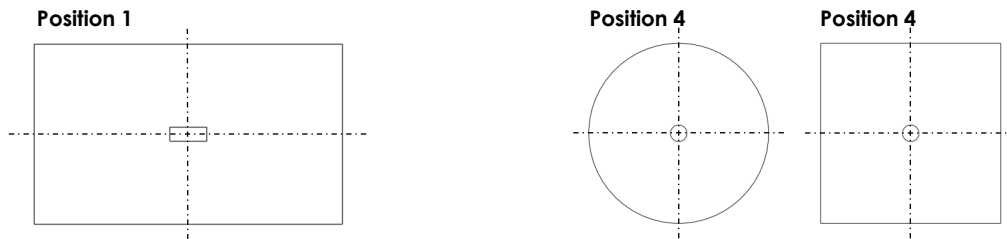


Knockout Size Code: C
(Only available in Position 4)

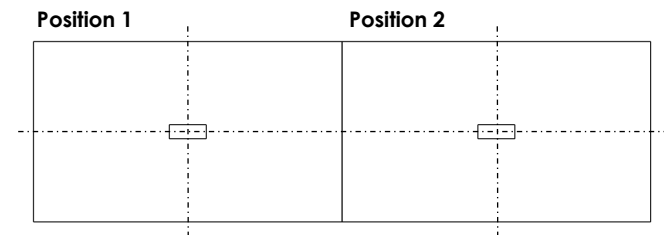


No Knockout Code: NK

Single Surface Tables



Double Surface Tables



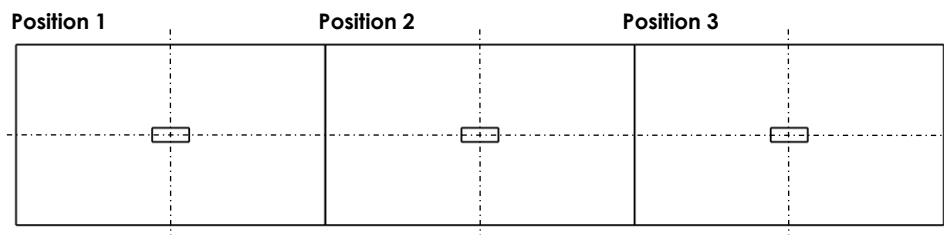
Example Sophi Table Specification:

SOP48120/S/SW/1A/2A

A Knockout for a XEM2 unit is required in positions 1 and 2.

Please Note: Electrical Modules Must Be Ordered Separately

Triple Surface Tables



Additional Details

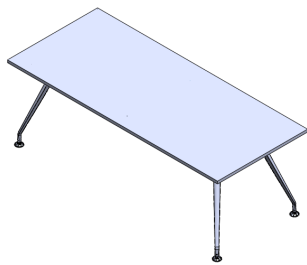
All TFL and HPL surfaces are 1" thick.

3mm thick edge trim on all outer edges. Where two surfaces meet, the edge is .5mm thick.

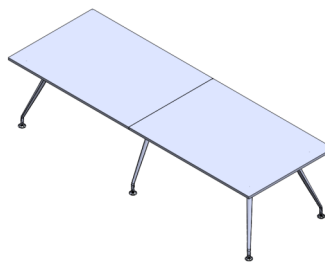
Unless otherwise specified, edge trim will match surface color.

Frames provide 3/4" of leveling height.

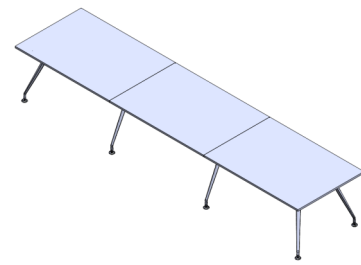
Tables



Four Leg,
One Surface Table



Six Leg,
Two Surface Table



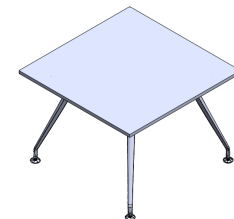
Eight Leg,
Three Surface Table



Three Leg,
Round Surface Table

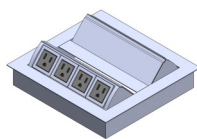


Four Leg,
Round Surface Table

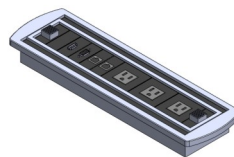


Four Leg,
Square Surface Table

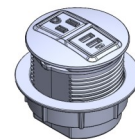
Electrical



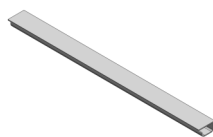
XEM2
Double Sided Electrical
Module



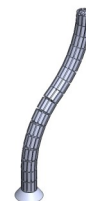
XECV
Large Electrical
Module



XNOD
Round Electrical
Module



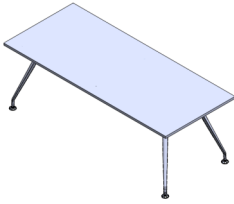
XWGLP
Low Profile Wire
Manager



XSPN
Spine Wire Manager

Rectangular Tables

Four Legs - One Surface



What's Included:

Table Frame with Surface. All Necessary Hardware.
Electrical Modules Must Be Ordered Separately.

If Radiused Corners are required, please add \$100 List.

Finish Options:


Please see www.fluidgroup.com/finishes for finish details

Information Required to Order:

Table Code/ Corner Detail/ Surface Finish/ Knockout Position and Size.


Product Code	Product Description	List TFL	List HPL
SOP3648	36"D x 48"W Sophi Table, Rectangular Surface		
SOP3654	36"D x 54"W Sophi Table, Rectangular Surface		
SOP3660	36"D x 60"W Sophi Table, Rectangular Surface		
SOP3666	36"D x 66"W Sophi Table, Rectangular Surface		
SOP3672	36"D x 72"W Sophi Table, Rectangular Surface		
SOP3678	36"D x 78"W Sophi Table, Rectangular Surface		
SOP3684	36"D x 84"W Sophi Table, Rectangular Surface		
SOP3696	36"D x 96"W Sophi Table, Rectangular Surface		
SOP4248	42"D x 48"W Sophi Table, Rectangular Surface		
SOP4254	42"D x 54"W Sophi Table, Rectangular Surface		
SOP4260	42"D x 60"W Sophi Table, Rectangular Surface		
SOP4266	42"D x 66"W Sophi Table, Rectangular Surface		
SOP4272	42"D x 72"W Sophi Table, Rectangular Surface		
SOP4278	42"D x 78"W Sophi Table, Rectangular Surface		
SOP4284	42"D x 84"W Sophi Table, Rectangular Surface		
SOP4296	42"D x 96"W Sophi Table, Rectangular Surface		
SOP4854	48"D x 54"W Sophi Table, Rectangular Surface		
SOP4860	48"D x 60"W Sophi Table, Rectangular Surface		
SOP4866	48"D x 66"W Sophi Table, Rectangular Surface		
SOP4872	48"D x 72"W Sophi Table, Rectangular Surface		
SOP4878	48"D x 78"W Sophi Table, Rectangular Surface		
SOP4884	48"D x 84"W Sophi Table, Rectangular Surface		
SOP4896	48"D x 96"W Sophi Table, Rectangular Surface		

Knockout Position and Size



XEM2

Knockout Size Code: **A**



XECV

Knockout Size Code: **B**

No
Knockout
Required ?

No Knockout Code: **NK**

Position 1

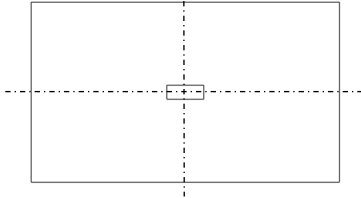


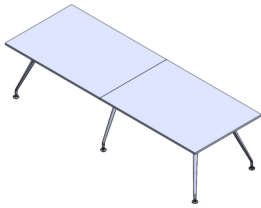
Table Specification Example:

SOP3660/S/CG/1NK
(36x60 Sophi Table/ Square Corners/ Concrete Grooves Thermofused Laminate/ No Knockout Position 1)

*****Electrical Modules Must Be Ordered Separately**

Rectangular Tables

Six Legs - Two Surfaces



What's Included:

Table Frame with Surface. All Necessary Hardware.
Electrical Modules Must Be Ordered Separately.

If Radiused Corners are required, please add \$100 List.

Finish Options:


Please see www.fluidgroup.com/finishes for finish details

Information Required to Order:

Table Code/ Corner Detail/ Surface Finish/ Knockout Position and Size.


Product Code	Product Description	List TFL	List HPL
SOP36108	36"D x 108"W Sophi Table, Rectangular Surface		
SOP36120	36"D x 120"W Sophi Table, Rectangular Surface		
SOP42108	42"D x 108"W Sophi Table, Rectangular Surface		
SOP42120	42"D x 120"W Sophi Table, Rectangular Surface		
SOP48108	48"D x 108"W Sophi Table, Rectangular Surface		
SOP48120	48"D x 120"W Sophi Table, Rectangular Surface		
SOP48132	48"D x 132"W Sophi Table, Rectangular Surface		
SOP48144	48"D x 144"W Sophi Table, Rectangular Surface		
SOP48156	48"D x 156"W Sophi Table, Rectangular Surface		
SOP48168	48"D x 168"W Sophi Table, Rectangular Surface		
SOP48180	48"D x 180"W Sophi Table, Rectangular Surface		
SOP54144	54"D x 144"W Sophi Table, Rectangular Surface		
SOP54168	54"D x 168"W Sophi Table, Rectangular Surface		
SOP60144	60"D x 144"W Sophi Table, Rectangular Surface		
SOP60168	60"D x 168"W Sophi Table, Rectangular Surface		

Knockout Position and Size



XEM2

Knockout Size Code: **A**



XECV

Knockout Size Code: **B**

No
Knockout
Required ?

No Knockout Code: **NK**

Position 1 **Position 2**

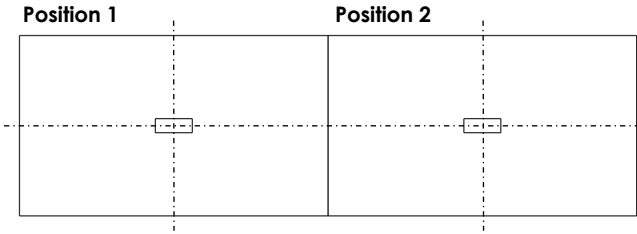


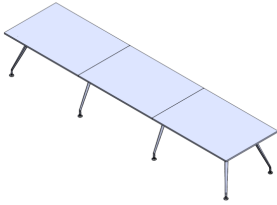
Table Specification Examples:

SOP48120/R/CG/1NK/2B
 (48x120 Sophi Table/ Radiused Corners/ Concrete Grooves Thermofused Laminate/ No Knockout Position 1/ XECV Knockout Position 2)

*****Electrical Modules Must Be Ordered Separately**

Rectangular Tables

Eight Legs - Three Surfaces



What's Included:

Table Frame with Surface. All Necessary Hardware.
Electrical Modules Must Be Ordered Separately.

If Radiused Corners are required, please add \$100 List.

Finish Options:


Please see www.fluidgroup.com/finishes for finish details

Information Required to Order:


Table Code/ Corner Detail/ Surface Finish/ Knockout Position and Size.

Product Code	Product Description	List TFL	List HPL
SOP48192	48"D x 192"W Sophi Table, Rectangular Surface		
SOP54192	54"D x 192"W Sophi Table, Rectangular Surface		
SOP54216	54"D x 216"W Sophi Table, Rectangular Surface		
SOP54240	54"D x 240"W Sophi Table, Rectangular Surface		
SOP60192	60"D x 192"W Sophi Table, Rectangular Surface		
SOP60216	60"D x 216"W Sophi Table, Rectangular Surface		
SOP60240	60"D x 240"W Sophi Table, Rectangular Surface		

Knockout Position and Size



XEM2
Knockout Size Code: **A**



XECV
Knockout Size Code: **B**

**No
Knockout
Required ?**

No Knockout Code: **NK**

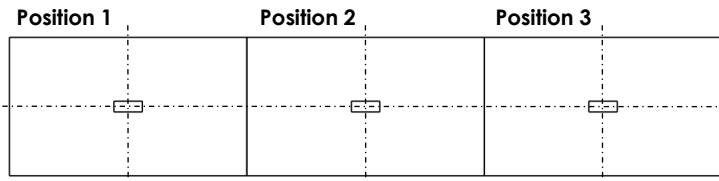


Table Specification Examples:

SOP54192/S/CG/1NK/2B/3NK
 (54x192 Sophi Table/ Square Corners/ Concrete Grooves Thermofused Laminate/ No Knockout Position 1/ XECV Knockout Position 2/ No Knockout Position 3)

*****Electrical Modules Must Be Ordered Separately**

Round Tables

Three Legs



What's Included:

Table Frame with Surface. All Necessary Hardware.
Electrical Modules Must Be Ordered Separately.

Finish Options:

Please see www.fluidgroup.com/finishes for finish details

Information Required to Order:

Table Code/ Surface Finish/ Knockout Position and Size.

Product Code	Product Description	List TFL	List HPL
SOP3R36	36" Dia Sophi Table, 3 Leg, Round Surface		
SOP3R42	42" Dia Sophi Table, 3 Leg, Round Surface		
SOP3R48	48" Dia Sophi Table, 3 Leg, Round Surface		
SOP3R54	54" Dia Sophi Table, 3 Leg, Round Surface		
SOP3R60	60" Dia Sophi Table, 3 Leg, Round Surface		

Round Tables

Four Legs



What's Included:

Table Frame with Surface. All Necessary Hardware.
Electrical Modules Must Be Ordered Separately.

Finish Options:

Please see www.fluidgroup.com/finishes for finish details

Information Required to Order:

Table Code/ Surface Finish/ Knockout Position and Size.

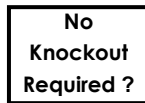
Product Code	Product Description	List TFL	List HPL
SOP4R36	36" Dia Sophi Table, 4 Leg, Round Surface		
SOP4R42	42" Dia Sophi Table, 4 Leg, Round Surface		
SOP4R48	48" Dia Sophi Table, 4 Leg, Round Surface		
SOP4R54	54" Dia Sophi Table, 4 Leg, Round Surface		
SOP4R60	60" Dia Sophi Table, 4 Leg, Round Surface		

Knockout Position and Size

XNOD



Knockout Size Code: **C**



No Knockout Code: **NK**

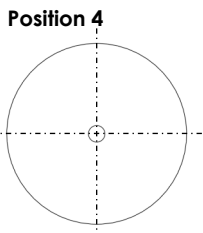


Table Specification Examples:

SOP3R42/GT/4C

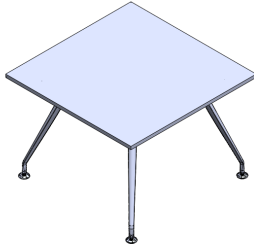
(42 Round, 3 Leg Sophi Table/ Ginger Thermofused Laminate/ XNOD Knockout Position 4)

SOP4R60/HPST/4NK

(60 Round, 4 Leg Sophi Table/ Stainless High Pressure Laminate/ No Knockout Position 4)

*****Electrical Modules Must Be Ordered Separately**

Square Tables
Four Legs



What's Included:

Table Frame with Surface. All Necessary Hardware.
Electrical Modules Must Be Ordered Separately.

If Radiused Corners are required, please add \$100 List.

Finish Options:


Please see www.fluidgroup.com/finishes for finish details

Information Required to Order:

Table Code/ Corner Detail/ Surface Finish/ Knockout Position and Size.

Product Code	Product Description	List	List
		TFL	HPL
SOP3636	36"D x 36"W Sophi Table, Square Surface		
SOP4242	42"D x 42"W Sophi Table, Square Surface		
SOP4848	48"D x 48"W Sophi Table, Square Surface		
SOP5454	54"D x 54"W Sophi Table, Square Surface		
SOP6060	60"D x 60"W Sophi Table, Square Surface		

Knockout Position and Size



XNOD

Knockout Size Code: **C**

No
Knockout
Required ?

Position 4

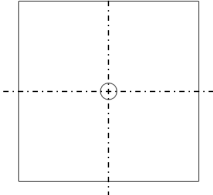


Table Specification Examples:

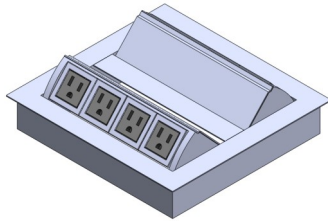
SOP3636/S/BW/4C
(36 Square Sophi Table/ Square Corners/ Blackwood Thermofused Laminate/ XNOD Knockout Position 4)

*****Electrical Modules Must Be Ordered Separately**

No Knockout Code: **NK**

XEM2

Double Sided Electrical Module



What's Included:

Electrical Module. All Necessary Hardware

Finish Options:

ANO - Anodized, WH - White, B - Black

Information Required to Order:

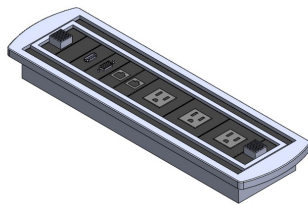
Electrical Module Code / Finish. Example: **XEM2B/ANO**

**Notes: For Information Regarding Electrical Module Position, Please see Page 6.
XEM2 is Available in Positions 1,2, and 3.**

Product Code	Product Description	List
XEM2A	Double Sided Electrical Module, 4pwr Per Side, 120" Cord	
XEM2B	Double Sided Electrical Module, 2pwr 2USB Per Side, 120" Cord	

XECV

Large Electrical Module



What's Included:

Electrical Module. All Necessary Hardware

Finish Options:

Only Available in Silver/Black

Information Required to Order:

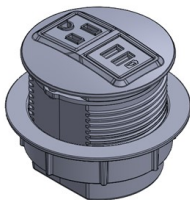
Electrical Module Code. Example: **XECVA**

**Notes: For Information Regarding Electrical Module Position, Please see Page 6.
XECV is Available in Positions 1,2, and 3.**

Product Code	Product Description	List
XECVA	Large Electrical Module, 1VGA, 1HDMI, 3pwr, 2data, 120" Cord	
XECVB	Large Electrical Module, 1VGA, 1HDMI, 1data USB, 2audio(3.5mm), 3pwr, 2data, 120" Cord	

XNOD

Round Electrical Module



What's Included:

Electrical Module. All Necessary Hardware

Finish Options:

WH - White, B - Black

Information Required to Order:

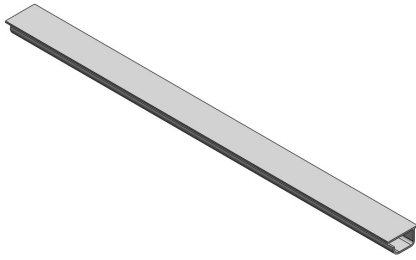
Electrical Module Code / Finish. Example: **XNODB/WH**

**Notes: For Information Regarding Electrical Module Position, Please see Page 6.
XNOD is Available in Position 4.**

Product Code	Product Description	List
XNODA	Plug in Electrical Module, Round, 2 power	
XNODB	Plug in Electrical Module, Round, 1 power/2 USB	

XWGLP

Low Profile Wire Manager



What's Included:

Low Profile Wire Manager, All Necessary Hardware.

Finish Options:

Not Applicable. Light Grey Only

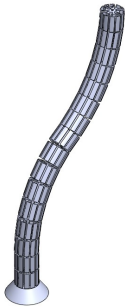
Information Required to Order:

Low Profile Wire Manager Code. Example: **XWGLP60**

Product Code	Product Description	List
XWGLP48	48" Low Profile Wire Manager	
XWGLP54	54" Low Profile Wire Manager	
XWGLP60	60" Low Profile Wire Manager	
XWGLP66	66" Low Profile Wire Manager	
XWGLP72	72" Low Profile Wire Manager	

XSPN

Spine Wire Manager



What's Included:

Spine Wire Manager. All Necessary Hardware.

Finish Options:

Not Applicable. Grey Only

Information Required to Order:

Spine Wire Manager Code. Example: **XSPN28**

Product Code	Product Description	List
XSPN28	28" Spine Wire Manager	

How to Order - Please send all purchase orders to order@fluidgroup.com or fax to 1.866.769.6057.

Questions - Call us toll free at 1.866.933.5258.

Please see www.fluidgroup.com for all information including:

- Terms & conditions
- Warranty information
- Local representation information
- Finishes & Resources

Thank-you for choosing fluidconcepts!

fluidconcepts & design inc.
96 Planchet Rd.
Concord Ontario Canada
L4K 2C7

TF. 1.866.933.5258
Fax. 1.866.789.6057
www.fluidgroup.com
order@fluidgroup.com

