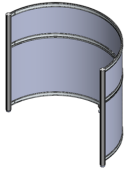


OrbitPod

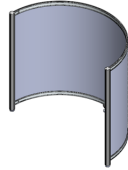
Product Guide



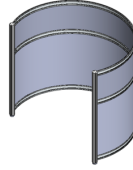
Shells



TPHS
Half Shell
Segmented Dividers



TPHF
Half Shell
Full Height Divider



TPES
Extended Shell
Segmented Dividers

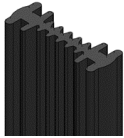


TPAS
Add on Shell
Segmented Dividers



TPAF
Add on Shell
Full Height Divider

Hinge



TPLH
Spline Live Hinge

Surfaces



TPWS-YY
Ying Yang Style
Surface



TPWS-CV
Inset Curve Style
Surface

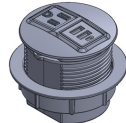


TPWS-AN
Angular Style Surface

Electrical

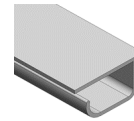


XNAC
Pop Up Power
Module



XNOD
Round Power
Module

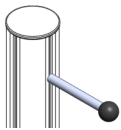
Accessories



XWGLP
Low Profile Wire
Manager



XVWM2
Vertical Post Wire
Manager



XACH1
Coat / Bag Hook

Finishes

Please see <https://www.fluidconcepts.ca/Furniture-Finishes-s/46.htm>



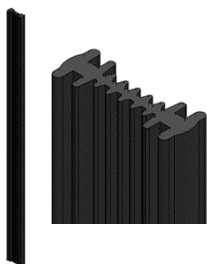


Features

OrbitPods are small footprint ergonomic touch-down stations which provide a partial or full enclosure in open environments. They are perfect for business lounges, library enclaves, touch-down and collaboration areas, or any space where hotel style workstations are needed. Optional Worksurface mounted electrical will allow users to plug-in and go. Available in a variety of finishes, they can be customized with graphics and artwork.

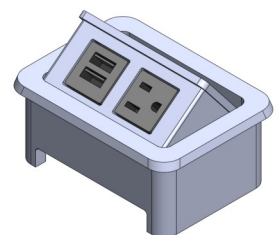
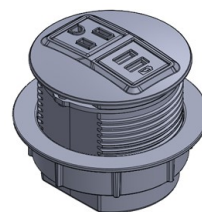
Flexibility

When a full enclosure is required, the flexible Spline Live Hinge will connect two OrbitPod shells together. The Spline also acts as an integrated hinge. This, combined with Teflon levelers, allows OrbitPod to open and close freely.



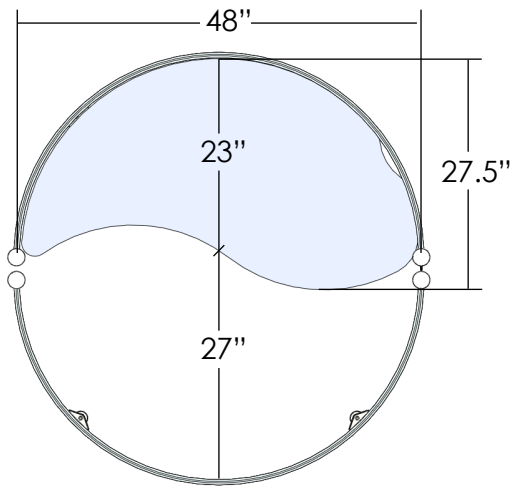
Electrical Components

Electrical Modules can be added to OrbitPods to power devices. In situations where users may be coming and going, they can quickly connect to surface mounted power to start their task. Vertical and horizontal wire management is also available to create a clean aesthetic.

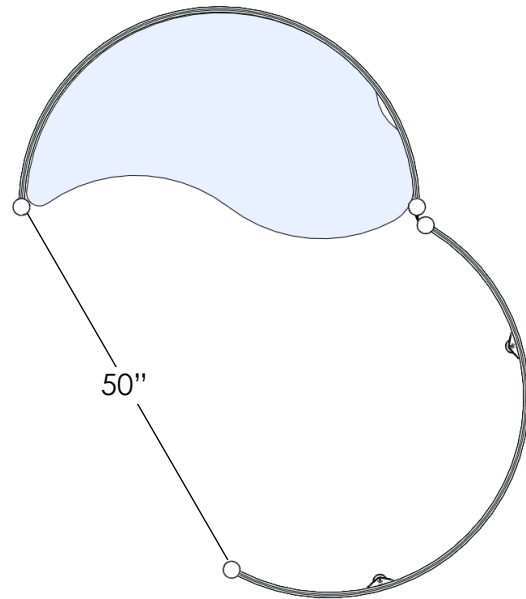


Key Dimensions

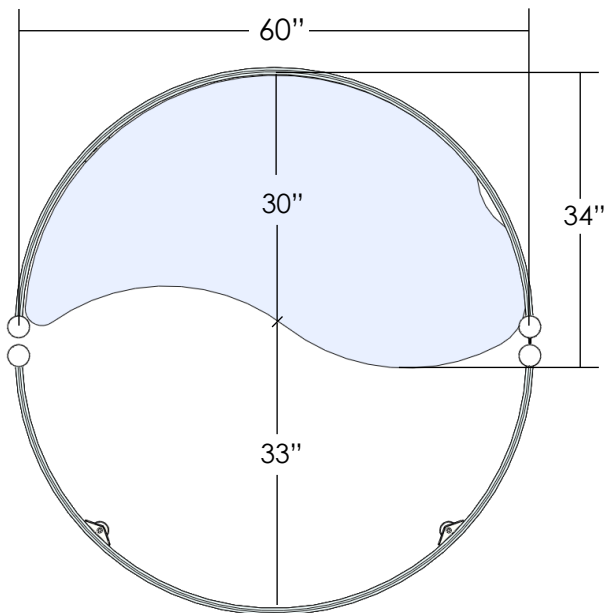
48" OrbitPod - Closed



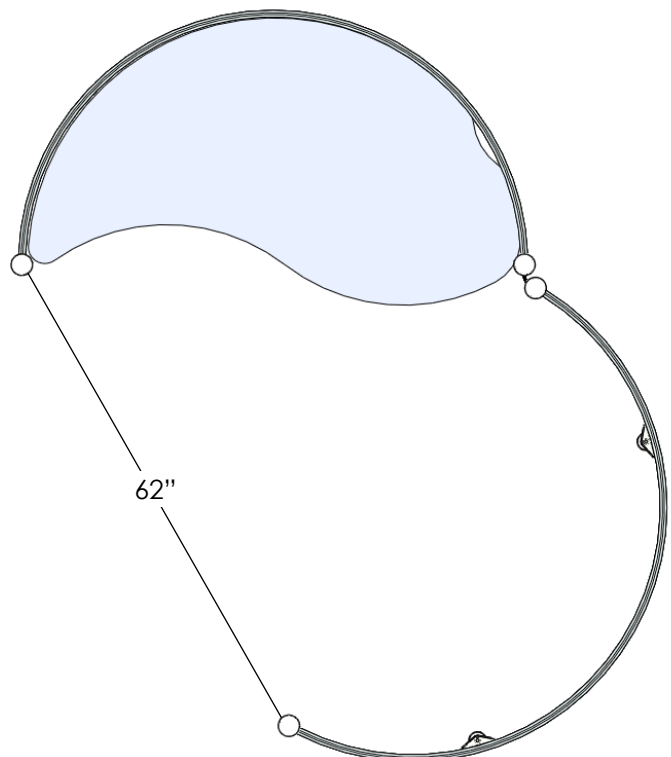
48" OrbitPod - Open

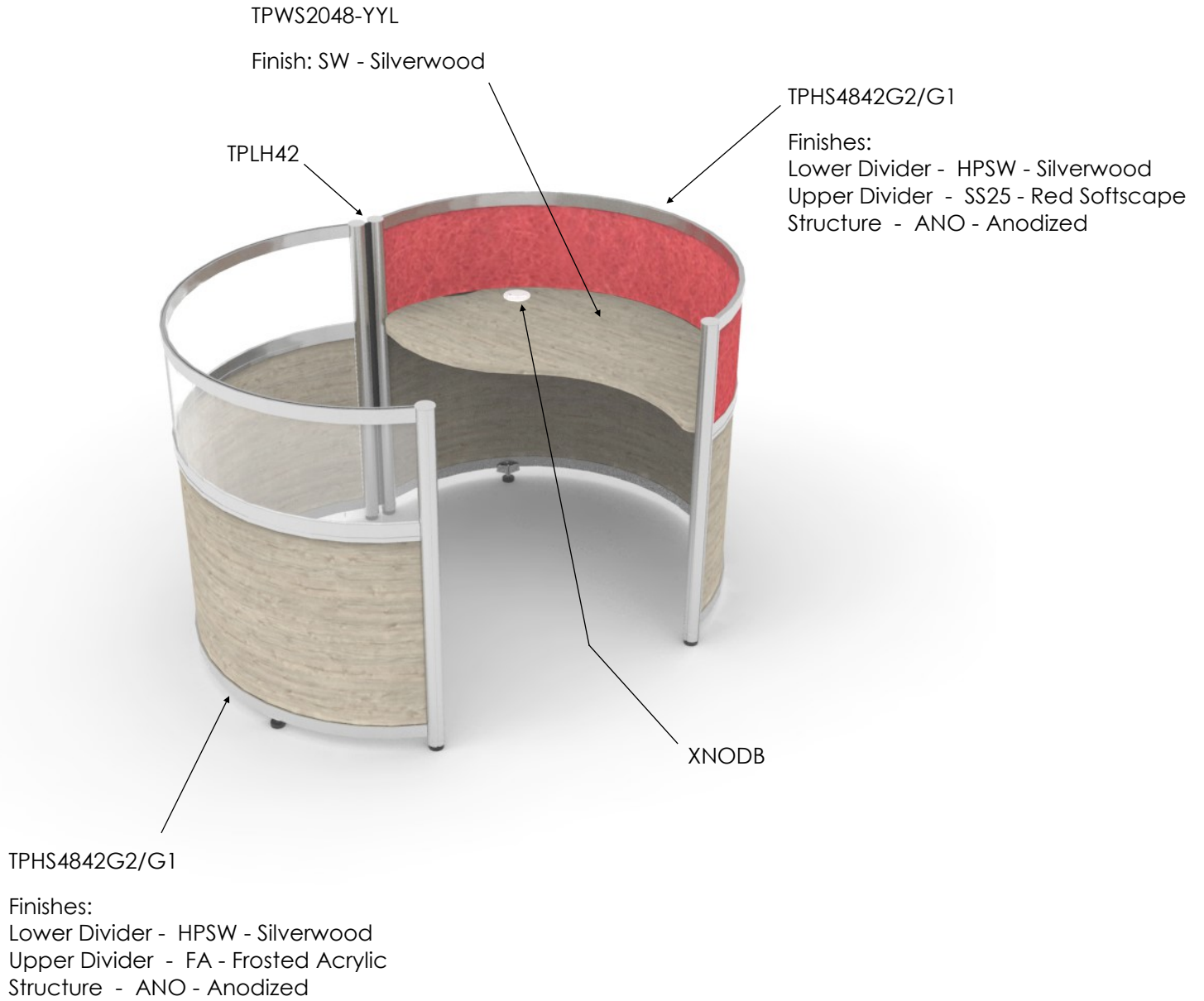


60" OrbitPod - Closed



60" OrbitPod - Open

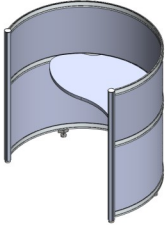




QTY	Product Code	Product Description
2	TPHS4849G1/G1	48 Dia, 49"H, Half Shell - Segmented Dividers, Grade1 Lower/Grade1 Upper
1	TPLH49	49" High Live Hinge
1	TPWS2048-YYL	ThinkPod WS, 20"x 48" Ying Yang, Left Hand
1	XNODB	Plug in Powder Module, Pop Up, 1 power/2 USB
2	XWGLP24	24 Low-Profile Pwr/Data Wire Mgr, Full Length

TP1ESS4849

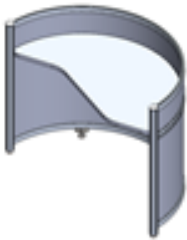
1 Extended Shell, Segmented. 48"Dia x 49"H. Ying Yang Style Surface



QTY	Product Code	Product Description
1	TPES4849G2/G1	48 Dia, 49"H, Extended Shell - Segmented Dividers, Grade2 Lower/Grade1 Upper
1	TPWS2048-YYL	ThinkPod WS, 20"x 48" Ying Yang, Left Hand
2	XWGLP24	24 Low-Profile Pwr/Data Wire Mgr, Full Length

TP1HSS4836

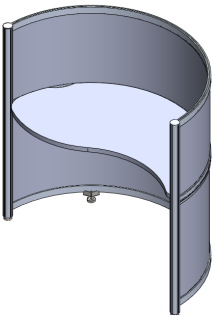
1 Half Shell, Segmented. 48"Dia x 36"H. Angled Style Surface



QTY	Product Code	Product Description
1	TPHS4836G1/G1	48 Dia, 36"H, Half Shell - Segmented Dividers, Grade1 Lower/Grade1 Upper
1	TPWS2048-ANR	ThinkPod WS, 20"x 48" Angular, Right Hand
2	XWGLP24	24 Low-Profile Pwr/Data Wire Mgr, Full Length

TP1HSS4849

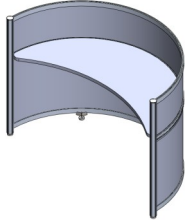
1 Half Shell, Segmented. 48"Dia x 49"H. Ying Yang Style Surface



QTY	Product Code	Product Description
1	TPHS4849G2/G1	48 Dia, 49"H, Half Shell - Segmented Dividers, Grade2 Lower/Grade1 Upper
1	TPWS2048-YYL	ThinkPod WS, 20"x 48" Ying Yang, Left Hand
2	XWGLP24	24 Low-Profile Pwr/Data Wire Mgr, Full Length

TP1HSS6042

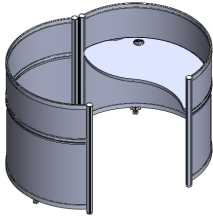
1 Half Shell, Segmented. 60"Dia x 42"H. Curved Style Surface



QTY	Product Code	Product Description
1	TPHS6042G2/G1	60 Dia, 42"H, Half Shell - Segmented Dividers, Grade2 Lower/ Grade1 Upper
1	TPWS2460-CV	ThinkPod WS, 24"x 60" Inset Curve
2	XWGLP30	30 Low-Profile Pwr/Data Wire Mgr, Full Length

TP2HSS4842

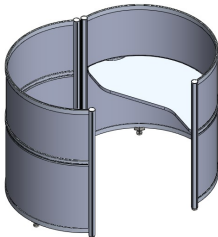
2 Half Shells, Segmented. 48"Dia x 42"H. Ying Yang Style Surface



QTY	Product Code	Product Description
2	TPHS4842G2/G1	48 Dia, 42"H, Half Shell - Segmented Dividers, Grade2 Lower/ Grade1 Upper
1	TPWS2048-YYL	ThinkPod WS, 20"x 48" Ying Yang, Left Hand
1	TPLH42	42" High Live Hinge
1	XNODB	Plug in Powder Module, Round, 1 power/2 USB
2	XWGLP24	24 Low-Profile Pwr/Data Wire Mgr, Full Length

TP2HSS4849

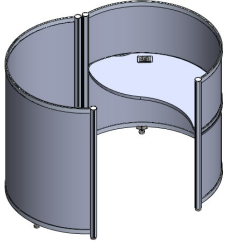
2 Half Shells, Segmented, 48"Dia x 49"H Angular Style Surface



QTY	Product Code	Product Description
2	TPHS4849G1/G1	48 Dia, 49"H, Half Shell - Segmented Dividers, Grade1 Lower/ Grade1 Upper
1	TPWS2048-ANL	ThinkPod WS, 20"x 48" Angular, Left Hand
1	TPLH49	49" High Live Hinge
2	XWGLP24	24 Low-Profile Pwr/Data Wire Mgr, Full Length

TP2HSSF4849

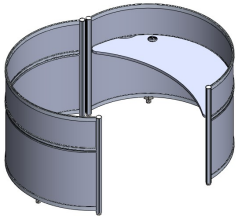
2 Half Shells, 1 Segmented, 1 Full. 48"Dia x 49"H. Ying Yang Style Surface



QTY	Product Code	Product Description
2	TPHS6042G1/G1	60 Dia, 42"H, Half Shell - Segmented Dividers, Grade1 Lower/ Grade1 Upper
1	TPWS2460-CV	ThinkPod WS, 24"x 60" Inset Curve
1	TPLH42	42" High Live Hinge
1	XNODB	Plug in Powder Module, Round, 1 power/2 USB
2	XWGLP30	30 Low-Profile Pwr/Data Wire Mgr, Full Length

TP2HSS6042

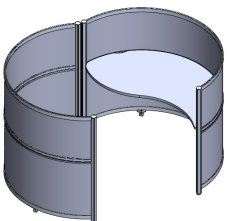
2 Half Shells, Segmented. 60"Dia x 42"H. Curved Style Surface



QTY	Product Code	Product Description
2	TPHS6042G1/G1	60 Dia, 42"H, Half Shell - Segmented Dividers, Grade1 Lower/ Grade1 Upper
1	TPWS2460-CV	ThinkPod WS, 24"x 60" Inset Curve
1	TPLH42	42" High Live Hinge
1	XNODB	Plug in Powder Module, Round, 1 power/2 USB
2	XWGLP30	30 Low-Profile Pwr/Data Wire Mgr, Full Length

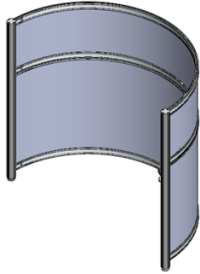
TP2HSS6049

2 Half Shells, Segmented. 60"Dia x 49"H. Ying Yang Style Surface



QTY	Product Code	Product Description
2	TPHS6049G2/G1	60 Dia, 49"H, Half Shell - Segmented Dividers, Grade2 Lower/ Grade1 Upper
1	TPWS2048-YYL	ThinkPod WS, 20"x 48" Ying Yang, Left Hand
1	TPLH49	49" High Live Hinge
2	XWGLP24	24 Low-Profile Pwr/Data Wire Mgr, Full Length

TPHS

Half Shell - Segmented Dividers - **48" Diameter**What's Included:

Two Vertical Posts, Three Horizontal Beams, Two Dividers, Levelers, All Necessary Hardware.

Finish Options:

Please see www.fluidgroup.com/finishes for finish details

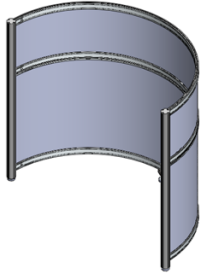
Information Required to Order:

Half Shell Code / Structures Finish / Divider Finishes. Example:

TPHS4849G2/G1 - ANO / ST / FA

Product Code	Product Description
TPHS4836G1/G1	48 Dia, 36"H, Half Shell - Segmented Dividers, Grade1 Lower/Grade1 Upper
TPHS4836G1/G2	48 Dia, 36"H, Half Shell - Segmented Dividers, Grade1 Lower/Grade2 Upper
TPHS4836G2/G1	48 Dia, 36"H, Half Shell - Segmented Dividers, Grade2 Lower/Grade1 Upper
TPHS4836G2/G2	48 Dia, 36"H, Half Shell - Segmented Dividers, Grade2 Lower/Grade2 Upper
TPHS4842G1/G1	48 Dia, 42"H, Half Shell - Segmented Dividers, Grade1 Lower/Grade1 Upper
TPHS4842G1/G2	48 Dia, 42"H, Half Shell - Segmented Dividers, Grade1 Lower/Grade2 Upper
TPHS4842G2/G1	48 Dia, 42"H, Half Shell - Segmented Dividers, Grade2 Lower/Grade1 Upper
TPHS4842G2/G2	48 Dia, 42"H, Half Shell - Segmented Dividers, Grade2 Lower/Grade2 Upper
TPHS4849G1/G1	48 Dia, 49"H, Half Shell - Segmented Dividers, Grade1 Lower/Grade1 Upper
TPHS4849G1/G2	48 Dia, 49"H, Half Shell - Segmented Dividers, Grade1 Lower/Grade2 Upper
TPHS4849G2/G1	48 Dia, 49"H, Half Shell - Segmented Dividers, Grade2 Lower/Grade1 Upper
TPHS4849G2/G2	48 Dia, 49"H, Half Shell - Segmented Dividers, Grade2 Lower/Grade2 Upper
TPHS4860G1/G1	48 Dia, 60"H, Half Shell - Segmented Dividers, Grade1 Lower/Grade1 Upper
TPHS4860G1/G2	48 Dia, 60"H, Half Shell - Segmented Dividers, Grade1 Lower/Grade2 Upper
TPHS4860G2/G1	48 Dia, 60"H, Half Shell - Segmented Dividers, Grade2 Lower/Grade1 Upper
TPHS4860G2/G2	48 Dia, 60"H, Half Shell - Segmented Dividers, Grade2 Lower/Grade2 Upper

TPHS

Half Shell - Segmented Dividers - **60" Diameter**What's Included:

Two Vertical Posts, Three Horizontal Beams, Two Dividers, Levelers, All Necessary Hardware.

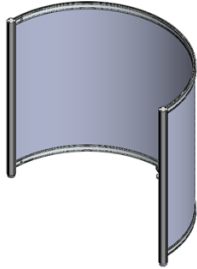
Finish Options:Please see www.fluidgroup.com/finishes for finish detailsInformation Required to Order:

Half Shell Code / Structures Finish / Divider Finishes. Example:

TPHS6049G2/G1 - ANO / ST / FA

Product Code	Product Description
TPHS6036G1/G1	60 Dia, 36"H, Half Shell - Segmented Dividers, Grade1 Lower/Grade1 Upper
TPHS6036G1/G2	60 Dia, 36"H, Half Shell - Segmented Dividers, Grade1 Lower/Grade2 Upper
TPHS6036G2/G1	60 Dia, 36"H, Half Shell - Segmented Dividers, Grade2 Lower/Grade1 Upper
TPHS6036G2/G2	60 Dia, 36"H, Half Shell - Segmented Dividers, Grade2 Lower/Grade2 Upper
TPHS6042G1/G1	60 Dia, 42"H, Half Shell - Segmented Dividers, Grade1 Lower/Grade1 Upper
TPHS6042G1/G2	60 Dia, 42"H, Half Shell - Segmented Dividers, Grade1 Lower/Grade2 Upper
TPHS6042G2/G1	60 Dia, 42"H, Half Shell - Segmented Dividers, Grade2 Lower/Grade1 Upper
TPHS6042G2/G2	60 Dia, 42"H, Half Shell - Segmented Dividers, Grade2 Lower/Grade2 Upper
TPHS6049G1/G1	60 Dia, 49"H, Half Shell - Segmented Dividers, Grade1 Lower/Grade1 Upper
TPHS6049G1/G2	60 Dia, 49"H, Half Shell - Segmented Dividers, Grade1 Lower/Grade2 Upper
TPHS6049G2/G1	60 Dia, 49"H, Half Shell - Segmented Dividers, Grade2 Lower/Grade1 Upper
TPHS6049G2/G2	60 Dia, 49"H, Half Shell - Segmented Dividers, Grade2 Lower/Grade2 Upper
TPHS6060G1/G1	60 Dia, 60"H, Half Shell - Segmented Dividers, Grade1 Lower/Grade1 Upper
TPHS6060G1/G2	60 Dia, 60"H, Half Shell - Segmented Dividers, Grade1 Lower/Grade2 Upper
TPHS6060G2/G1	60 Dia, 60"H, Half Shell - Segmented Dividers, Grade2 Lower/Grade1 Upper
TPHS6060G2/G2	60 Dia, 60"H, Half Shell - Segmented Dividers, Grade2 Lower/Grade2 Upper

TPHF

Half Shell - Full Height Divider - **48" Diameter & 60" Diameter**What's Included:

Two Vertical Posts, Two Horizontal Beams, One Divider, Levelers, All Necessary Hardware.

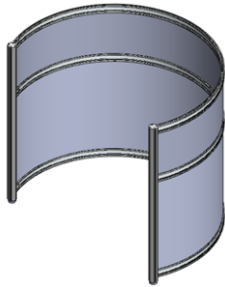
Finish Options:Please see www.fluidgroup.com/finishes for finish detailsInformation Required to Order:

Half Shell Code / Structures Finish / Divider Finishes. Example:

TPHF4849G1- ANO / SS25**Note: Full Height Shells Cannot Support a Surface. They Are Used as The Rear Frame of a Double Shell Configuration Only.**

Product Code	Product Description
TPHF4836G1	48 Dia, 36"H, Half Shell - Full Height Divider, Grade1
TPHF4836G2	48 Dia, 36"H, Half Shell - Full Height Divider, Grade2
TPHF4842G1	48 Dia, 42"H, Half Shell - Full Height Divider, Grade1
TPHF4842G2	48 Dia, 42"H, Half Shell - Full Height Divider, Grade2
TPHF4849G1	48 Dia, 49"H, Half Shell - Full Height Divider, Grade1
TPHF4849G2	48 Dia, 49"H, Half Shell - Full Height Divider, Grade2
TPHF4860G1	48 Dia, 60"H, Half Shell - Full Height Divider, Grade1
TPHF4860G2	48 Dia, 60"H, Half Shell - Full Height Divider, Grade2
TPHF6036G1	60 Dia, 36"H, Half Shell - Full Height Divider, Grade1
TPHF6036G2	60 Dia, 36"H, Half Shell - Full Height Divider, Grade2
TPHF6042G1	60 Dia, 42"H, Half Shell - Full Height Divider, Grade1
TPHF6042G2	60 Dia, 42"H, Half Shell - Full Height Divider, Grade2
TPHF6049G1	60 Dia, 49"H, Half Shell - Full Height Divider, Grade1
TPHF6049G2	60 Dia, 49"H, Half Shell - Full Height Divider, Grade2
TPHF6060G1	60 Dia, 60"H, Half Shell - Full Height Divider, Grade1
TPHF6060G2	60 Dia, 60"H, Half Shell - Full Height Divider, Grade2

TPES

Extended Shell -Segmented Dividers - **48" Diameter**What's Included:

Two Vertical Posts, Three Horizontal Beams, Two Dividers, Levelers, All Necessary Hardware.

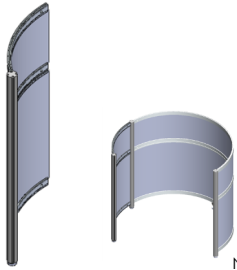
Finish Options:Please see www.fluidgroup.com/finishes for finish detailsInformation Required to Order:

Extended Shell Code / Structures Finish / Divider Finishes. Example:

TPES4849G2/G1 - ANO / ST / FA

Product Code	Product Description
TPES4836G1/G1	48 Dia, 36"H, Extended Shell - Segmented Dividers, Grade1 Lower/Grade1 Upper
TPES4836G1/G2	48 Dia, 36"H, Extended Shell - Segmented Dividers, Grade1 Lower/Grade2 Upper
TPES4836G2/G1	48 Dia, 36"H, Extended Shell - Segmented Dividers, Grade2 Lower/Grade1 Upper
TPES4836G2/G2	48 Dia, 36"H, Extended Shell - Segmented Dividers, Grade2 Lower/Grade2 Upper
TPES4842G1/G1	48 Dia, 42"H, Extended Shell - Segmented Dividers, Grade1 Lower/Grade1 Upper
TPES4842G1/G2	48 Dia, 42"H, Extended Shell - Segmented Dividers, Grade1 Lower/Grade2 Upper
TPES4842G2/G1	48 Dia, 42"H, Extended Shell - Segmented Dividers, Grade2 Lower/Grade1 Upper
TPES4842G2/G2	48 Dia, 42"H, Extended Shell - Segmented Dividers, Grade2 Lower/Grade2 Upper
TPES4849G1/G1	48 Dia, 49"H, Extended Shell - Segmented Dividers, Grade1 Lower/Grade1 Upper
TPES4849G1/G2	48 Dia, 49"H, Extended Shell - Segmented Dividers, Grade1 Lower/Grade2 Upper
TPES4849G2/G1	48 Dia, 49"H, Extended Shell - Segmented Dividers, Grade2 Lower/Grade1 Upper
TPES4849G2/G2	48 Dia, 49"H, Extended Shell - Segmented Dividers, Grade2 Lower/Grade2 Upper
TPES4860G1/G1	48 Dia, 60"H, Extended Shell - Segmented Dividers, Grade1 Lower/Grade1 Upper
TPES4860G1/G2	48 Dia, 60"H, Extended Shell - Segmented Dividers, Grade1 Lower/Grade2 Upper
TPES4860G2/G1	48 Dia, 60"H, Extended Shell - Segmented Dividers, Grade2 Lower/Grade1 Upper
TPES4860G2/G2	48 Dia, 60"H, Extended Shell - Segmented Dividers, Grade2 Lower/Grade2 Upper

TPAS

Add on Shell - Segmented Divider - **48" Diameter**

Note: TPAS to be Ordered Separately.

What's Included:

One Vertical Post, Three Horizontal Beams, Two Dividers, Levelers, All Necessary Hardware.

Finish Options:

Please see www.fluidgroup.com/finishes for finish details

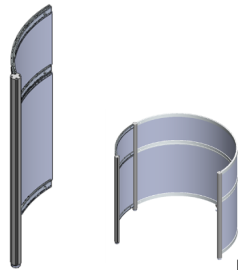
Information Required to Order:

Add on Shell Code / Structures Finish / Divider Finishes. Example:

TPAS4849G2/G1 - ANO / ST / FA

Product Code	Product Description
TPAS4836G1/G1	48 Dia, 36"H, Add-On Shell - Segmented Dividers, Grade1 Lower/Grade1 Upper
TPAS4836G1/G2	48 Dia, 36"H, Add-On Shell - Segmented Dividers, Grade1 Lower/Grade2 Upper
TPAS4836G2/G1	48 Dia, 36"H, Add-On Shell - Segmented Dividers, Grade2 Lower/Grade1 Upper
TPAS4836G2/G2	48 Dia, 36"H, Add-On Shell - Segmented Dividers, Grade2 Lower/Grade2 Upper
TPAS4842G1/G1	48 Dia, 42"H, Add-On Shell - Segmented Dividers, Grade1 Lower/Grade1 Upper
TPAS4842G1/G2	48 Dia, 42"H, Add-On Shell - Segmented Dividers, Grade1 Lower/Grade2 Upper
TPAS4842G2/G1	48 Dia, 42"H, Add-On Shell - Segmented Dividers, Grade2 Lower/Grade1 Upper
TPAS4842G2/G2	48 Dia, 42"H, Add-On Shell - Segmented Dividers, Grade2 Lower/Grade2 Upper
TPAS4849G1/G1	48 Dia, 49"H, Add-On Shell - Segmented Dividers, Grade1 Lower/Grade1 Upper
TPAS4849G1/G2	48 Dia, 49"H, Add-On Shell - Segmented Dividers, Grade1 Lower/Grade2 Upper
TPAS4849G2/G1	48 Dia, 49"H, Add-On Shell - Segmented Dividers, Grade2 Lower/Grade1 Upper
TPAS4849G2/G2	48 Dia, 49"H, Add-On Shell - Segmented Dividers, Grade2 Lower/Grade2 Upper
TPAS4860G1/G1	48 Dia, 60"H, Add-On Shell - Segmented Dividers, Grade1 Lower/Grade1 Upper
TPAS4860G1/G2	48 Dia, 60"H, Add-On Shell - Segmented Dividers, Grade1 Lower/Grade2 Upper
TPAS4860G2/G1	48 Dia, 60"H, Add-On Shell - Segmented Dividers, Grade2 Lower/Grade1 Upper
TPAS4860G2/G2	48 Dia, 60"H, Add-On Shell - Segmented Dividers, Grade2 Lower/Grade2 Upper

TPAS

Add on Shell - Segmented Divider - **60" Diameter**

Note: TPHS to be Ordered Separately.

What's Included:

One Vertical Post, Three Horizontal Beams, Two Dividers, Levelers, All Necessary Hardware.

Finish Options:

Please see www.fluidgroup.com/finishes for finish details

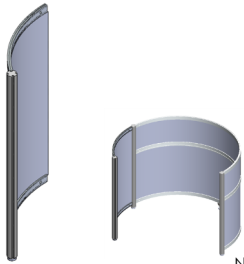
Information Required to Order:

Add on Shell Code / Structures Finish / Divider Finishes. Example:

TPAS6049G2/G1 - ANO / ST / FA

Product Code	Product Description
TPAS6036G1/G1	60 Dia, 36"H, Add-On Shell - Segmented Dividers, Grade1 Lower/Grade1 Upper
TPAS6036G1/G2	60 Dia, 36"H, Add-On Shell - Segmented Dividers, Grade1 Lower/Grade2 Upper
TPAS6036G2/G1	60 Dia, 36"H, Add-On Shell - Segmented Dividers, Grade2 Lower/Grade1 Upper
TPAS6036G2/G2	60 Dia, 36"H, Add-On Shell - Segmented Dividers, Grade2 Lower/Grade2 Upper
TPAS6042G1/G1	60 Dia, 42"H, Add-On Shell - Segmented Dividers, Grade1 Lower/Grade1 Upper
TPAS6042G1/G2	60 Dia, 42"H, Add-On Shell - Segmented Dividers, Grade1 Lower/Grade2 Upper
TPAS6042G2/G1	60 Dia, 42"H, Add-On Shell - Segmented Dividers, Grade2 Lower/Grade1 Upper
TPAS6042G2/G2	60 Dia, 42"H, Add-On Shell - Segmented Dividers, Grade2 Lower/Grade2 Upper
TPAS6049G1/G1	60 Dia, 49"H, Add-On Shell - Segmented Dividers, Grade1 Lower/Grade1 Upper
TPAS6049G1/G2	60 Dia, 49"H, Add-On Shell - Segmented Dividers, Grade1 Lower/Grade2 Upper
TPAS6049G2/G1	60 Dia, 49"H, Add-On Shell - Segmented Dividers, Grade2 Lower/Grade1 Upper
TPAS6049G2/G2	60 Dia, 49"H, Add-On Shell - Segmented Dividers, Grade2 Lower/Grade2 Upper
TPAS6060G1/G1	60 Dia, 60"H, Add-On Shell - Segmented Dividers, Grade1 Lower/Grade1 Upper
TPAS6060G1/G2	60 Dia, 60"H, Add-On Shell - Segmented Dividers, Grade1 Lower/Grade2 Upper
TPAS6060G2/G1	60 Dia, 60"H, Add-On Shell - Segmented Dividers, Grade2 Lower/Grade1 Upper
TPAS6060G2/G2	60 Dia, 60"H, Add-On Shell - Segmented Dividers, Grade2 Lower/Grade2 Upper

TPAF

Add on Shell - Full Height Divider - **48" Diameter & 60" Diameter**

Note: TPHS to be Ordered Separately.

What's Included:

One Vertical Post, Two Horizontal Beams, One Divider, Levelers, All Necessary Hardware.

Finish Options:

Please see www.fluidgroup.com/finishes for finish details

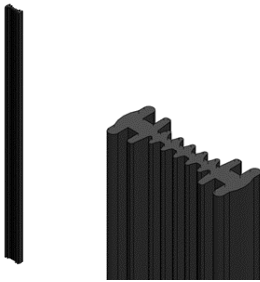
Information Required to Order:

Add on Shell Code / Structures Finish / Divider Finishes. Example:

TPAF4849G2/G1 - ANO / SS25

Product Code	Product Description
TPAF4836G1	48 Dia, 36"H, Add-On Shell - Full Height Dividers, Grade1
TPAF4836G2	48 Dia, 36"H, Add-On Shell - Full Height Dividers, Grade2
TPAF4842G1	48 Dia, 42"H, Add-On Shell - Full Height Dividers, Grade1
TPAF4842G2	48 Dia, 42"H, Add-On Shell - Full Height Dividers, Grade2
TPAF4849G1	48 Dia, 49"H, Add-On Shell - Full Height Dividers, Grade1
TPAF4849G2	48 Dia, 49"H, Add-On Shell - Full Height Dividers, Grade2
TPAF4860G1	48 Dia, 60"H, Add-On Shell - Full Height Dividers, Grade1
TPAF4860G2	48 Dia, 60"H, Add-On Shell - Full Height Dividers, Grade2
TPAF6036G1	60 Dia, 36"H, Add-On Shell - Full Height Dividers, Grade1
TPAF6036G2	60 Dia, 36"H, Add-On Shell - Full Height Dividers, Grade2
TPAF6042G1	60 Dia, 42"H, Add-On Shell - Full Height Dividers, Grade1
TPAF6042G2	60 Dia, 42"H, Add-On Shell - Full Height Dividers, Grade2
TPAF6049G1	60 Dia, 49"H, Add-On Shell - Full Height Dividers, Grade1
TPAF6049G2	60 Dia, 49"H, Add-On Shell - Full Height Dividers, Grade2
TPAF6060G1	60 Dia, 60"H, Add-On Shell - Full Height Dividers, Grade1
TPAF6060G2	60 Dia, 60"H, Add-On Shell - Full Height Dividers, Grade2

TPLH
Spline Live Hinge



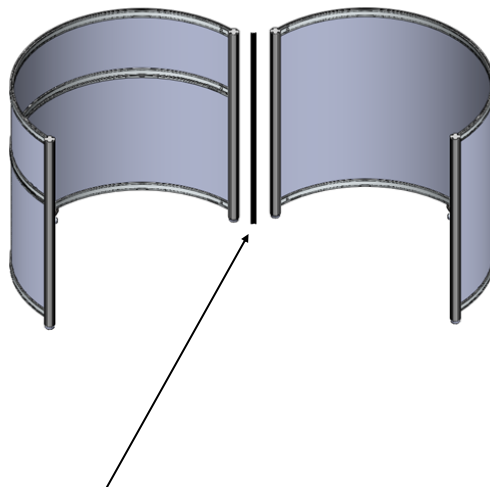
What's Included:
Spline Live Hinge, All Necessary Hardware.

Finish Options:
Black Only.

Information Required to Order:
Spline Live Hinge Code.

Product Code	Product Description
TPLH36	36" High Live Hinge
TPLH42	42" High Live Hinge
TPLH49	49" High Live Hinge
TPLH60	60" High Live Hinge

The *Spline Live Hinge* Connects Two Half Shells, and Allows Them to Open and Close.

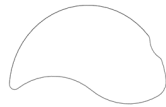


Note: TPHS and TPHF to be ordered separately.

TPLH (shown separated from half shells)

TPWS-YY

Ying Yang Style Surface



Note: Right Hand Surface Shown.

What's Included:

Worksurface, Front Corner & Channel Beam Brackets (attachment hardware), All Necessary Hardware.

Finish Options:

Please see www.fluidgroup.com/finishes for finish details

Information Required to Order:

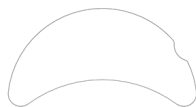
Worksurface Surface Code / Worksurface Finish / Example:

TPWS2048-YYR - ST

Product Code	Product Description
TPWS2048-YYL	ThinkPod WS, 20"x 48" Ying Yang, Left Hand
TPWS2048-YYR	ThinkPod WS, 20"x 48" Ying Yang, Right Hand
TPWS2460-YYL	ThinkPod WS, 24"x 60" Ying Yang, Left Hand
TPWS2460-YYR	ThinkPod WS, 24"x 60" Ying Yang, Right Hand

TPWS-CV

Inset Curve Style Surface



What's Included:

Worksurface, Front Corner & Channel Beam Brackets (attachment hardware), All Necessary Hardware.

Finish Options:

Please see www.fluidgroup.com/finishes for finish details

Information Required to Order:

Worksurface Surface Code / Worksurface Finish / Example:

TPWS2048-CV - ST

Product Code	Product Description
TPWS2048-CV	ThinkPod WS, 20"x 48" Inset Curve
TPWS2460-CV	ThinkPod WS, 24"x 60" Inset Curve

TPWS-AN
Angular Style Surface



Note: Right Hand Surface Shown.

What's Included:

Worksurface, Front Corner & Channel Beam Brackets (attachment hardware), All Necessary Hardware.

Finish Options:

Please see www.fluidgroup.com/finishes for finish details

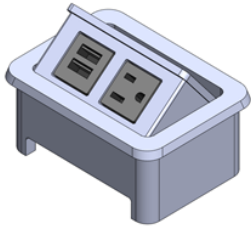
Information Required to Order:

Worksurface Surface Code / Worksurface Finish / Example:

TPWS2048-ANR - ST

Product Code	Product Description
TPWS2048-ANL	ThinkPod WS, 20"x 48" Angular, Left Hand
TPWS2048-ANR	ThinkPod WS, 20"x 48" Angular, Right Hand
TPWS2460-ANL	ThinkPod WS, 24"x 60" Angular, Left Hand
TPWS2460-ANR	ThinkPOod WS, 24"x 60" Angular, Right Hand

XNAC Pop Up Power Module



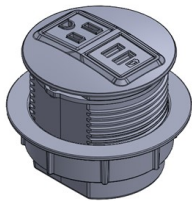
What's Included:
Pop Up Power Module, All Necessary Hardware.

Finish Options:
WH - White

Information Required to Order:
Pop Up Power Module Code

Product Code	Product Description
XNACA	Plug in Powder Module, Pop Up, 2 power
XNACB	Plug in Powder Module, Pop Up, 1 power/2 USB

XNOD Round Power Module



What's Included:
Round Power Module, All Necessary Hardware.

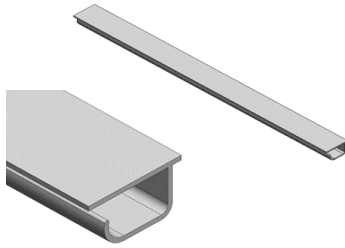
Finish Options:
WH - White

Information Required to Order:
Round Power Module Code

Product Code	Product Description
XNODA	Plug in Powder Module, Round, 2 power
XNODB	Plug in Powder Module, Round, 1 power/1 USB

XWGLP

Low Profile Wire Manager



What's Included:

Low Profile Wire Manager, All Necessary Hardware.

Finish Options:

Grey Only.

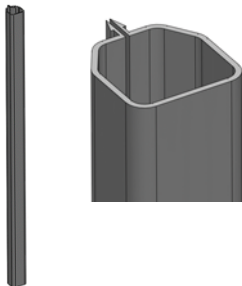
Information Required to Order:

Low Profile Wire Manager Code.

Product Code	Product Description
XWGLP24	24 Low-Profile Pwr/Data Wire Mgr, Full Length
XWGLP30	30 Low-Profile Pwr/Data Wire Mgr, Full Length

XVWM2

Vertical Post Wire Manager



What's Included:

Vertical Post Wire Manager, All Necessary Hardware.

Finish Options:

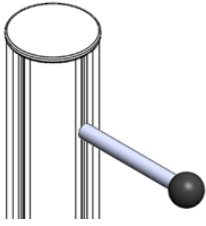
Grey Only.

Information Required to Order:

Vertical Wire Manager Code.

Product Code	Product Description
XVWM219	19 Vertical Pwr/Data Large Wire Mgr
XVWM227	27 Vertical Pwr/Data Large Wire Mgr

XACH1 Coat / Bag Hook



What's Included:
Coat / Bag Hook, All Necessary Hardware

Finish Options:
Silver Shaft with Black Ball End Only

Information Required to Order:
Coat / Bag Hook Code

Product Code

XACH1

Product Description

Coat / Bag Hook

How to Order - Please send all purchase orders to order@fluidgroup.com or fax to 1.866.769.6057.

Questions - Call us toll free at 1.866.933.5258.

Please see www.fluidgroup.com for all information including:

- Terms & conditions
- Warranty information
- Local representation information
- Finishes & Resources

Thank-you for choosing fluidconcepts!

Fluidconcept & design inc.
96 Planchet Rd.
Concord Ontario Canada
L4K 2C7

TF. 1.866.933.5258
Fax. 1.866.789.6057
www.fluidgroup.com
order@fluidgroup.com

