

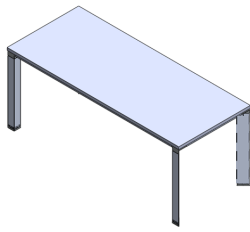
# Edge Meeting Tables

# Product Guide

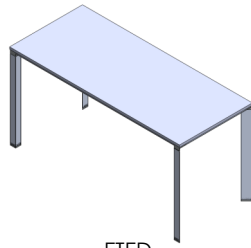


Product Map

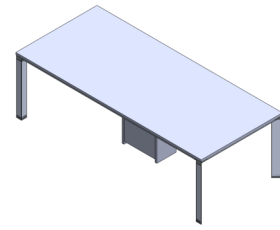
Tables



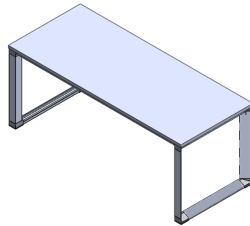
ETED  
Edge Table, Desk Leg  
29" High



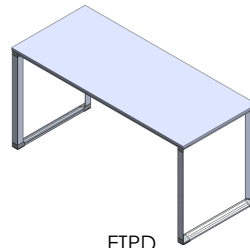
ETED  
Edge Table, Desk Leg  
42" High



ETCD  
Edge Table, Desk Leg,  
Cable Tower, 29" High

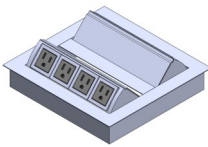


ETPD  
Edge Table, "O" Leg  
29" High



ETPD  
Edge Table, "O" Leg  
42" High

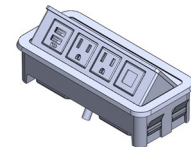
Electrical



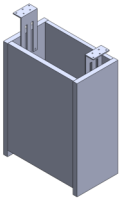
XEM2  
Double Sided  
Electrical Module



XECV  
Large Electrical Module



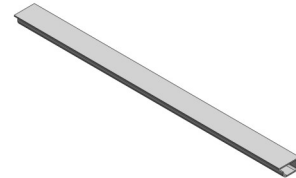
XNAC  
Pop-Up Electrical  
Module



7CTD  
Cable Tower,  
Access Door



XSPN  
Spine Wire Manager



XWGLP  
Low Profile Wire  
Manager

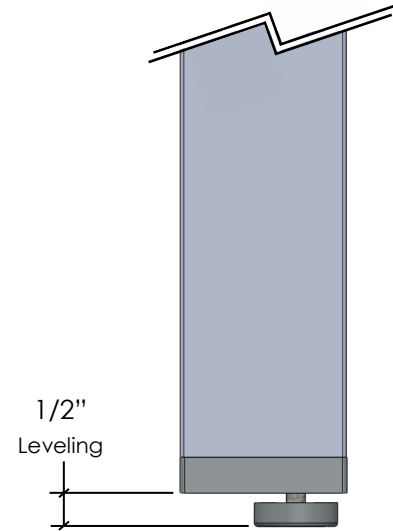
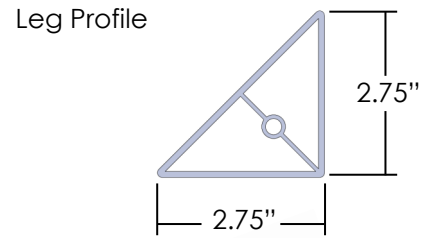
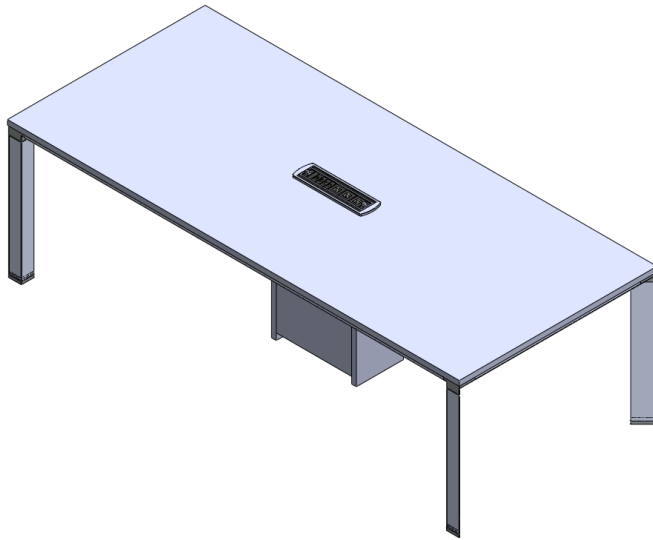
Details

All TFL and HPL surfaces are 1" thick.

3mm thick edge trim on all outer edges. Where two surfaces meet, the edge is .5mm thick.

Unless otherwise specified, edge trim will match surface color.

Frames provide 1/2" of leveling height.



**How To Specify Edge Meeting Tables**

There are four items to consider when specifying an Edge Table:

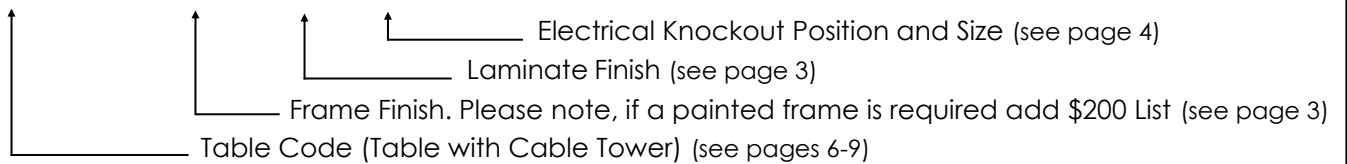
**Table Code/ Frame Finish / Surface & Wire Base Finish / Electrical Knockout Position and Size**

**Please note:** The Cable Tower is mandatory on larger tables. It is an option on smaller tables. Because of this, the laminate finish specified might refer to only the Worksurface or, the Cable Tower and Worksurface together.

The example below illustrates a table that is 48" x 120" long. This size of table includes a mandatory Cable Tower. Silverwood Thermofused laminate has been chosen for the Worksurface and Cable Tower finish. In this case, the B sized Electrical Module Knockout is required.

Example Edge Table Specification:

**ETCD48120/ANO/SW/2B**



**Please Note: Electrical Modules Must Be Ordered Separately**

**Finishes**

Please see [www.fluidgroup.com/finishes](http://www.fluidgroup.com/finishes) for finish details

**Structures**

**ANO** - Anodized / Chrome corners

**\*\*\* For Painted Frames Please add \$225 List**

**Electrical Modules**

**XEM2:**

**ANO** - Anodized

**WH** - White

**B** - Black

**XECV:**

Black and Silver Only

**XNAC:**

**WH** - White

**B** - Black

Example Edge Table Specification:

ETCD48120/**ANO**/SW/2B

↑ Anodized frame is required in this example.  
If a painted frame is required add **200 List**

Example Edge Table Specification:

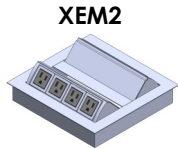
ETCD48120/ANO/**SW**/2B

↑ Silverwood Thermofused Laminate is required for the Surface and Wire Base. If HPL is required for the surface, the code would be: **HPSW**  
(Wire Base would default to TFL match)

**Electrical Module Knockout Position and Size**

When specifying table which requires an Electrical Module, the knockout **position** and **size** must be indicated.

As an example, **ETCD48120/ANO/SW/2B** is a 48" x 120" table with an Anodized Frame, Silverwood laminate with a knockout for a XECV in each position.



**XEM2**

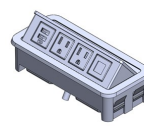
Knockout Size Code: **A**

(Not available in Position 1)



**XECV**

Knockout Size Code: **B**



**XNAC**

Knockout Size Code: **D**



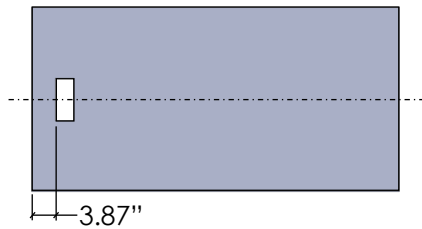
No Knockout Code: **NK**

**Position 1** - Long edge of knockout parallel to surface depth.

One electrical module must be ordered separately.

Knockout Size A (for XEM2 module) not available in position 1.

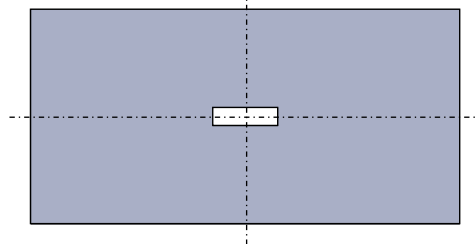
The example below illustrates a 30x60 table with a D sized knockout.



**Position 2** - Long edge of knockout parallel to surface width.

One electrical module must be ordered separately.

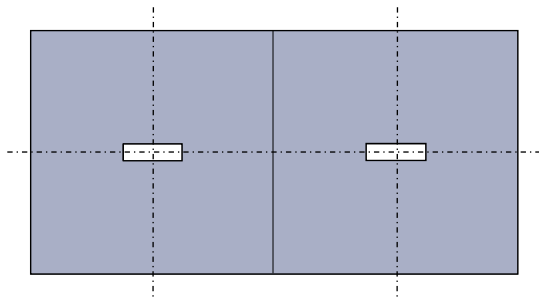
The example below illustrates a 48x96 table with a B sized knockout.



**Position 3 - Two Knockouts.** Long edge of knockouts parallel to surface width.

Two electrical modules must be ordered separately.

The example below illustrates a 60x120 surface with two B sized knockouts.



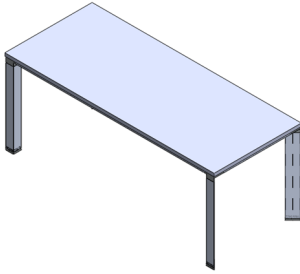
Example Edge Table Specification:

**ETCD48120/ANO/SW/2B**

↑ A Knockout for a XECV unit is required in position 2.

## ETED

Edge Meeting Table, Desk Leg - 29" High



What's Included:

Edge Meeting Desk Leg Frame, Worksurface, All Necessary Hardware.

Finish Options:

Please see [www.fluidgroup.com/finishes](http://www.fluidgroup.com/finishes) for finish details

Frame Anodized (ANO)

**For Painted Frames Please add \$200List**

Information Required to Order:

Table Code/ Frame Finish / Laminate Finish/ Knockout Position and Size.

Example: **ETED3072/ANO/NW/NK** (30x72 Table/Anodized Frame/Nova White Laminate/No Knockout)

| Product Code | Product Description                      | # of Surfaces | List TFL | List HPL |
|--------------|--|---------------|----------|----------|
| ETED2448     | 24"D x 48"W Edge Meeting Table, Desk Leg | 1             |          |          |
| ETED2454     | 24"D x 54"W Edge Meeting Table, Desk Leg | 1             |          |          |
| ETED2460     | 24"D x 60"W Edge Meeting Table, Desk Leg | 1             |          |          |
| ETED2466     | 24"D x 66"W Edge Meeting Table, Desk Leg | 1             |          |          |
| ETED2472     | 24"D x 72"W Edge Meeting Table, Desk Leg | 1             |          |          |
| ETED2478     | 24"D x 78"W Edge Meeting Table, Desk Leg | 1             |          |          |
| ETED2484     | 24"D x 84"W Edge Meeting Table, Desk Leg | 1             |          |          |
| ETED3048     | 30"D x 48"W Edge Meeting Table, Desk Leg | 1             |          |          |
| ETED3054     | 30"D x 54"W Edge Meeting Table, Desk Leg | 1             |          |          |
| ETED3060     | 30"D x 60"W Edge Meeting Table, Desk Leg | 1             |          |          |
| ETED3066     | 30"D x 66"W Edge Meeting Table, Desk Leg | 1             |          |          |
| ETED3072     | 30"D x 72"W Edge Meeting Table, Desk Leg | 1             |          |          |
| ETED3078     | 30"D x 78"W Edge Meeting Table, Desk Leg | 1             |          |          |
| ETED3084     | 30"D x 84"W Edge Meeting Table, Desk Leg | 1             |          |          |
| ETED3636     | 36"D x 36"W Edge Meeting Table, Desk Leg | 1             |          |          |
| ETED3648     | 36"D x 48"W Edge Meeting Table, Desk Leg | 1             |          |          |
| ETED3654     | 36"D x 54"W Edge Meeting Table, Desk Leg | 1             |          |          |
| ETED3660     | 36"D x 60"W Edge Meeting Table, Desk Leg | 1             |          |          |
| ETED3666     | 36"D x 66"W Edge Meeting Table, Desk Leg | 1             |          |          |
| ETED3672     | 36"D x 72"W Edge Meeting Table, Desk Leg | 1             |          |          |
| ETED3678     | 36"D x 78"W Edge Meeting Table, Desk Leg | 1             |          |          |
| ETED3684     | 36"D x 84"W Edge Meeting Table, Desk Leg | 1             |          |          |
| ETED3690     | 36"D x 90"W Edge Meeting Table, Desk Leg | 1             |          |          |
| ETED3696     | 36"D x 96"W Edge Meeting Table, Desk Leg | 1             | 1822     | 2278     |

Continued on next page

## ETED

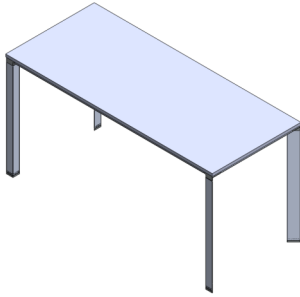
Edge Meeting Table, Desk Leg - 29" High continued

| <b>Product Code</b> | <b>Product Description</b>               | <b># of Surfaces</b> | <b>List TFL</b> | <b>List HPL</b> |
|---------------------|--|----------------------|-----------------|-----------------|
| ETED4242            | 42"D x 42"W Edge Meeting Table, Desk Leg | 1                    |                 |                 |
| ETED4248            | 42"D x 48"W Edge Meeting Table, Desk Leg | 1                    |                 |                 |
| ETED4254            | 42"D x 54"W Edge Meeting Table, Desk Leg | 1                    |                 |                 |
| ETED4260            | 42"D x 60"W Edge Meeting Table, Desk Leg | 1                    |                 |                 |
| ETED4266            | 42"D x 66"W Edge Meeting Table, Desk Leg | 1                    |                 |                 |
| ETED4272            | 42"D x 72"W Edge Meeting Table, Desk Leg | 1                    |                 |                 |
| ETED4278            | 42"D x 78"W Edge Meeting Table, Desk Leg | 1                    |                 |                 |
| ETED4284            | 42"D x 84"W Edge Meeting Table, Desk Leg | 1                    |                 |                 |
| ETED4848            | 48"D x 48"W Edge Meeting Table, Desk Leg | 1                    |                 |                 |
| ETED4860            | 48"D x 60"W Edge Meeting Table, Desk Leg | 1                    |                 |                 |
| ETED4866            | 48"D x 66"W Edge Meeting Table, Desk Leg | 1                    |                 |                 |
| ETED4872            | 48"D x 72"W Edge Meeting Table, Desk Leg | 1                    |                 |                 |
| ETED4878            | 48"D x 78"W Edge Meeting Table, Desk Leg | 1                    |                 |                 |
| ETED4884            | 48"D x 84"W Edge Meeting Table, Desk Leg | 1                    |                 |                 |

**\*\*\* For Painted Frames Please add \$200 List**

## ETED42

Edge Meeting Table, Desk Leg - 42" High



What's Included:

Edge Meeting Desk Leg Frame, Worksurface, All Necessary Hardware.

Finish Options:

Please see [www.fluidgroup.com/finishes](http://www.fluidgroup.com/finishes) for finish details

Frame Anodized (ANO)

**For Painted Frames Please add \$200 List**

Information Required to Order:

Table Code/ Frame Finish / Laminate Finish/ Knockout Position and Size.

Example: **ETED307242/ANO/NW/NK** (30x72x42 Table/Anodized Frame/Nova White Laminate/No Knockout)

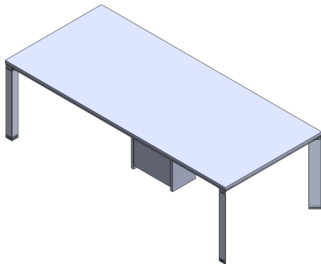
| Product Code | Product Description                             | # of Surfaces | List TFL | List HPL |
|--------------|---|---------------|----------|----------|
| ETED306042   | 30"D x 60"W x 42"H Edge Meeting Table, Desk Leg | 1             |          |          |
| ETED306642   | 30"D x 66"W x 42"H Edge Meeting Table, Desk Leg | 1             |          |          |
| ETED307242   | 30"D x 72"W x 42"H Edge Meeting Table, Desk Leg | 1             |          |          |
| ETED307842   | 30"D x 78"W x 42"H Edge Meeting Table, Desk Leg | 1             |          |          |
| ETED308442   | 30"D x 84"W x 42"H Edge Meeting Table, Desk Leg | 1             |          |          |
| ETED366042   | 36"D x 60"W x 42"H Edge Meeting Table, Desk Leg | 1             |          |          |
| ETED366642   | 36"D x 66"W x 42"H Edge Meeting Table, Desk Leg | 1             |          |          |
| ETED367242   | 36"D x 72"W x 42"H Edge Meeting Table, Desk Leg | 1             |          |          |
| ETED367842   | 36"D x 78"W x 42"H Edge Meeting Table, Desk Leg | 1             |          |          |
| ETED368442   | 36"D x 84"W x 42"H Edge Meeting Table, Desk Leg | 1             |          |          |

**\*\*\* For Painted Frames Please add \$200 List**



ETCD

Edge Meeting Table, Desk Leg, Cable Tower - 29" High



What's Included:

Edge Meeting Desk Leg Frame, Cable Tower, Worksurface, All Necessary Hardware.

Finish Options:

Please see [www.fluidgroup.com/finishes](http://www.fluidgroup.com/finishes) for finish details

Frame Anodized (ANO)

Cable Tower - TFL Finish Only.

**For Painted Frames Please add \$200 List**

Information Required to Order:

Table Code/ Frame Finish / laminate Finish/ Knockout Position and Size.

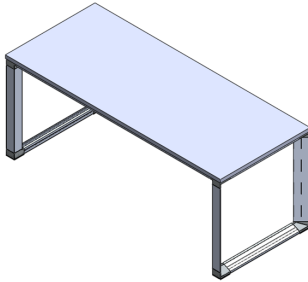
Example: **ETCD60120/ANO/CG/2B** (60x120 Table/Anodized Frame/Concrete Grooves Laminate/B sized knockout in position 2)

| Product Code | Product Description                                    | # of Surfaces | List TFL | List HPL |
|--------------|--|---------------|----------|----------|
| ETCD4290     | 42"D x 90"W Edge Meeting Table, Desk Leg, Cable Tower  | 1             |          |          |
| ETCD4296     | 42"D x 96"W Edge Meeting Table, Desk Leg, Cable Tower  | 1             |          |          |
| ETCD4890     | 48"D x 90"W Edge Meeting Table, Desk Leg, Cable Tower  | 1             |          |          |
| ETCD4896     | 48"D x 96"W Edge Meeting Table, Desk Leg, Cable Tower  | 1             |          |          |
| ETCD48108    | 48"D x 108"W Edge Meeting Table, Desk Leg, Cable Tower | 2             |          |          |
| ETCD48120    | 48"D x 120"W Edge Meeting Table, Desk Leg, Cable Tower | 2             |          |          |
| ETCD5490     | 54"D x 90"W Edge Meeting Table, Desk Leg, Cable Tower  | 1             |          |          |
| ETCD5496     | 54"D x 96"W Edge Meeting Table, Desk Leg, Cable Tower  | 1             |          |          |
| ETCD54108    | 54"D x 108"W Edge Meeting Table, Desk Leg, Cable Tower | 2             |          |          |
| ETCD54120    | 54"D x 120"W Edge Meeting Table, Desk Leg, Cable Tower | 2             |          |          |
| ETCD6090     | 60"D x 90"W Edge Meeting Table, Desk Leg, Cable Tower  | 1             |          |          |
| ETCD6096     | 60"D x 96"W Edge Meeting Table, Desk Leg, Cable Tower  | 1             |          |          |
| ETCD60108    | 60"D x 108"W Edge Meeting Table, Desk Leg, Cable Tower | 2             |          |          |
| ETCD60120    | 60"D x 120"W Edge Meeting Table, Desk Leg, Cable Tower | 2             |          |          |

**\*\*\* For Painted Frames Please add \$200 List**

## ETPD

Edge Meeting Table, "O" Leg - 29" High



What's Included:

Edge Meeting "O" Leg Frame, Worksurface, All Necessary Hardware.

Finish Options:

Please see [www.fluidgroup.com/finishes](http://www.fluidgroup.com/finishes) for finish details

Frame Anodized (ANO)

**For Painted Frames Please add \$200 List**

Information Required to Order:

Table Code/ Frame Finish / Laminate Finish/ Knockout Position and Size.

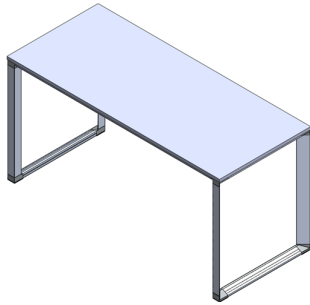
Example: **ETPD3060/ANO/BW/1D** (30x60 Table/Anodized Frame/Blackwood Laminate/D sized knockout in position 1)

| Product Code | Product Description                     | # of Surfaces | List TFL | List HPL |
|--------------|---|---------------|----------|----------|
| ETPD2448     | 24"D x 48"W Edge Meeting Table, "O" Leg | 1             |          |          |
| ETPD2454     | 24"D x 54"W Edge Meeting Table, "O" Leg | 1             |          |          |
| ETPD2460     | 24"D x 60"W Edge Meeting Table, "O" Leg | 1             |          |          |
| ETPD2466     | 24"D x 66"W Edge Meeting Table, "O" Leg | 1             |          |          |
| ETPD2472     | 24"D x 72"W Edge Meeting Table, "O" Leg | 1             |          |          |
| ETPD2478     | 24"D x 78"W Edge Meeting Table, "O" Leg | 1             |          |          |
| ETPD2484     | 24"D x 84"W Edge Meeting Table, "O" Leg | 1             |          |          |
| ETPD3048     | 30"D x 48"W Edge Meeting Table, "O" Leg | 1             |          |          |
| ETPD3054     | 30"D x 54"W Edge Meeting Table, "O" Leg | 1             |          |          |
| ETPD3060     | 30"D x 60"W Edge Meeting Table, "O" Leg | 1             |          |          |
| ETPD3066     | 30"D x 66"W Edge Meeting Table, "O" Leg | 1             |          |          |
| ETPD3072     | 30"D x 72"W Edge Meeting Table, "O" Leg | 1             |          |          |
| ETPD3078     | 30"D x 78"W Edge Meeting Table, "O" Leg | 1             |          |          |
| ETPD3084     | 30"D x 84"W Edge Meeting Table, "O" Leg | 1             |          |          |
| ETPD3660     | 36"D x 60"W Edge Meeting Table, "O" Leg | 1             |          |          |
| ETPD3666     | 36"D x 66"W Edge Meeting Table, "O" Leg | 1             |          |          |
| ETPD3672     | 36"D x 72"W Edge Meeting Table, "O" Leg | 1             |          |          |
| ETPD3678     | 36"D x 78"W Edge Meeting Table, "O" Leg | 1             |          |          |
| ETPD3684     | 36"D x 84"W Edge Meeting Table, "O" Leg | 1             |          |          |

**\*\*\* For Painted Frames Please add \$200 List**

ETPD42

Edge Meeting Table, "O" Leg - 42" High



What's Included:

Edge Meeting "O" Leg Frame, Worksurface, All Necessary Hardware.

Finish Options:

Please see [www.fluidgroup.com/finishes](http://www.fluidgroup.com/finishes) for finish details

Frame Anodized (ANO)

**For Painted Frames Please add \$200 List**

Information Required to Order:

Table Code/ Frame Finish / Laminate Finish/ Knockout Position and Size.

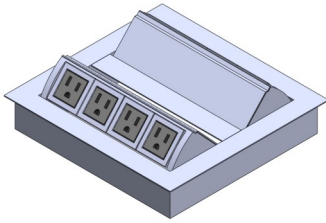
Example: **ETPD306042/ANO/BW/1D** (30x60x42 Table/Anodized Frame/ Blackwood Laminate/D sized knockout in position 1)

| Product Code | Product Description                            | # of Surfaces | List TFL | List HPL |
|--------------|--|---------------|----------|----------|
| ETPD306042   | 30"D x 60"W x 42"H Edge Meeting Table, "O" Leg | 1             |          |          |
| ETPD306642   | 30"D x 66"W x 42"H Edge Meeting Table, "O" Leg | 1             |          |          |
| ETPD307242   | 30"D x 72"W x 42"H Edge Meeting Table, "O" Leg | 1             |          |          |
| ETPD307842   | 30"D x 78"W x 42"H Edge Meeting Table, "O" Leg | 1             |          |          |
| ETPD308442   | 30"D x 84"W x 42"H Edge Meeting Table, "O" Leg | 1             |          |          |
| ETPD366042   | 36"D x 60"W x 42"H Edge Meeting Table, "O" Leg | 1             |          |          |
| ETPD366642   | 36"D x 66"W x 42"H Edge Meeting Table, "O" Leg | 1             |          |          |
| ETPD367242   | 36"D x 72"W x 42"H Edge Meeting Table, "O" Leg | 1             |          |          |
| ETPD367842   | 36"D x 78"W x 42"H Edge Meeting Table, "O" Leg | 1             |          |          |
| ETPD368442   | 36"D x 84"W x 42"H Edge Meeting Table, "O" Leg | 1             |          |          |

**\*\*\* For Painted Frames Please add \$200 List**

## XEM2

Double Sided Electrical Module



What's Included:

Electrical Module. All Necessary Hardware.

Finish Options:

**ANO** - Anodized, **WH** - White, **B** - Black

Information Required to Order:

Electrical Module Code / Finish. Example: **XEM2B/ANO**

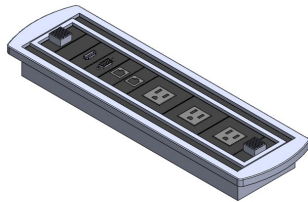
**Notes: For Information Regarding Electrical Module Position, Please see Page 4.**

**XEM2 is Available in Positions 1,2, and 3.**

| Product Code | Product Description   | List |
|--------------|---|------|
| XEM2A        | Double Sided Electrical Module, 4pwr Per Side, 120" Cord      |      |
| XEM2B        | Double Sided Electrical Module, 2pwr 2USB Per Side, 120" Cord |      |

## XECV

Large Electrical Module



What's Included:

Electrical Module. All Necessary Hardware.

Finish Options:

Only Available in Silver/Black

Information Required to Order:

Electrical Module Code. Example: **XECVA**

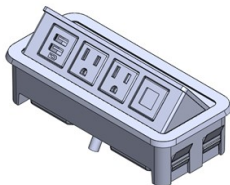
**Notes: For Information Regarding Electrical Module Position, Please see Page 4.**

**XECV is Available in Positions 1,2, and 3.**

| Product Code | Product Description  | List |
|--------------|--|------|
| XECVA        | Large Electrical Module, 1VGA, 1HDMI, 3pwr, 2data, 120" Cord                           |      |
| XECVB        | Large Electrical Module, 1VGA, 1HDMI, 1data USB, 2audio(3.5mm), 3pwr, 2data, 120" Cord |      |

## XNAC

Pop-Up Electrical Module



What's Included:

Electrical Module. All Necessary Hardware.

Finish Options:

**WH** - White, **B** - Black

Information Required to Order:

Electrical Module Code / Finish. Example: **XNACD/WH**

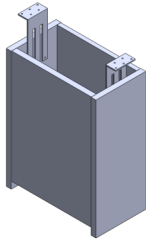
**Notes: For Information Regarding Electrical Module Position, Please see Page 4.**

**XECV is Available in Positions 1,2, and 3.**

| Product Code | Product Description  | List |
|--------------|--|------|
| XNACC        | Plug in Electrical Module, Pop Up, 2 power/1 USB/1 Open Data |      |
| XNACD        | Plug in Electrical Module, Pop Up, 4 power                   |      |
| XNACE        | Plug in Electrical Module, Pop Up, 2 power/2 USB             |      |

7CTD

Cable Tower



What's Included:  
Cable Tower, All Necessary Hardware.

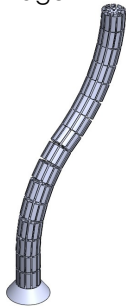
Finish Options:  
Please see [www.fluidgroup.com/finishes](http://www.fluidgroup.com/finishes) for finish details  
Cable Tower - TFL Finish Only.

Information Required to Order:  
Cable Tower Code / TFL Finish. Example **7CTD1018/AW**

| Product Code | Product Description                             | List<br>TFL |
|--------------|---|-------------|
| 7CTD101828   | 10"D x 18"W x 28"H Cable Tower with Access Door |             |
| 7CTD101841   | 10"D x 18"W x 41"H Cable Tower with Access Door |             |

XSPN

Spine Wire Manager

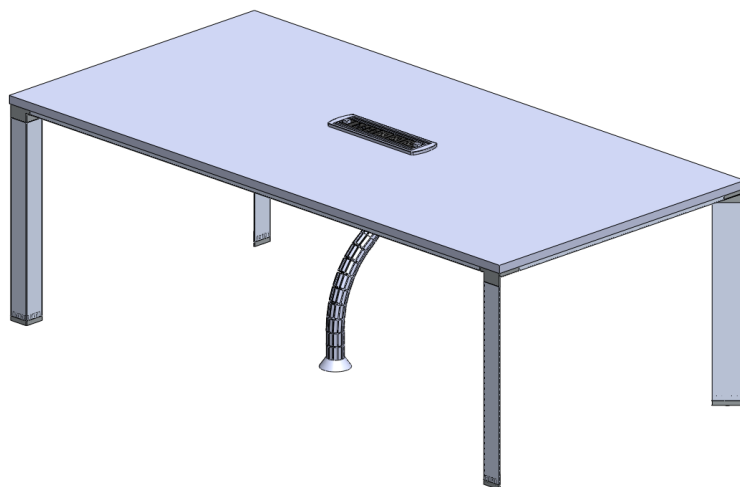


What's Included:  
Spine Wire Manager. All Necessary Hardware.

Finish Options:  
Not Applicable. Grey Only

Information Required to Order:  
Spine Wire Manager Code. Example: **XSPN28**

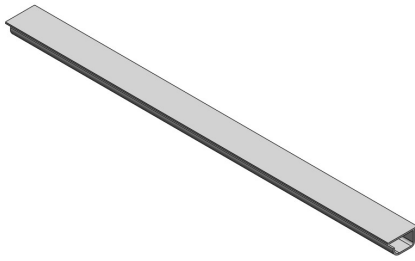
| Product Code | Product Description    | List |
|--------------|------------------------|------|
| XSPN28       | 28" Spine Wire Manager |      |
| XSPN41       | 41" Spine Wire Manager |      |



**XSPN28** Spine wire manager shown on an **ETED4284** table with a **XECVB** electrical module.

## XWGLP

Low Profile Wire Manager



What's Included:

Low Profile Wire Manager, All Necessary Hardware.

Finish Options:

Not Applicable. Light Grey Only

Information Required to Order:

Low Profile Wire Manager Code. Example: **XWGLP60**

| Product Code | Product Description          | List |
|--------------|------------------------------|------|
| XWGLP48      | 48" Low Profile Wire Manager |      |
| XWGLP54      | 54" Low Profile Wire Manager |      |
| XWGLP60      | 60" Low Profile Wire Manager |      |
| XWGLP66      | 66" Low Profile Wire Manager |      |
| XWGLP72      | 72" Low Profile Wire Manager |      |



# Edge Meeting Tables

---

**How to Order**—Please send all questions to purchase orders to [order@fluidgroup.com](mailto:order@fluidgroup.com) or fax to 1.866.769.6057. Or please call us directly toll free 1.866.933.5258

Please see [www.fluidgroup.com](http://www.fluidgroup.com) for all information including—

terms & conditions

warranty information

local representation information

Finishes & Resources

Thank-you for choosing fluidconcepts!

Fluidconcept & design inc.  
96 Planchet Rd.  
Concord Ontario Canada  
L4K 2C7

TF. 1.866.933.5258

Fax. 1.866.789.

[www.fluidgroup.com](http://www.fluidgroup.com)

