

TrussTM workbench



fluid
Really Cool Workspaces

Truss™ workbench

Elevate your work! The Truss workbench is a high performance truss based desking and benching system offering extreme structural stability, flexibility, infinite worksurface and storage. A new way of thinking and working.



Configurations



2 Pack Linear—2PL



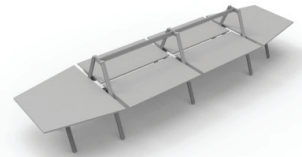
4 Pack Back
4PB



4 Pack Back with Return
4PBR



2 Pack Linear with Return
2PLR

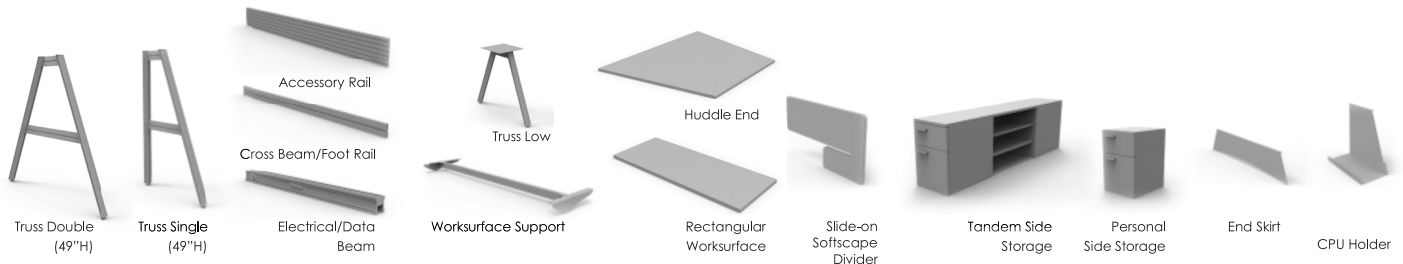


4 Pack Back with Huddle Ends
4PBH

Key Features

- Unique Truss Design—One Truss supports both 24" and/or 30" deep worksurfaces
- Worksurfaces can be set at seated or standing height—or anywhere in between—24"H - 49"H
- Storage is Truss side mounted at the height where you need it
- Truss supports spatial dividers, various worktools, and media
- Electrical & Data Beam provides 8 wire/4 circuit power—Basefeed or ceiling feed

Core Components



www.fluidgroup.com sales@fluidgroup.com 1.866.933.5258

Truss Workbench are Trademarked brands of fluidconcept & design inc. All rights, industrial designs and copyrights reserved. Patents Pending.

