



OPERATORS GUIDE

Thank you for your purchase of an InterMountain Railway Company locomotive. This guide will direct you through basic operational and decoder functions, shell removal instructions, and maintenance tasks. Should you have any questions that are not answered in this guide please feel free to contact InterMountain service and support at the contact information listed above. All locomotives come factory equipped with a SoundTraxx Tsunami Decoder; both sound and non-sound versions of your locomotive are DCC equipped.

Operational and Decoder Functions:

Sound Equipped Locomotive Only-

Your new locomotive comes equipped with a SoundTraxx Tsunami Digital sound Technology Decoder installed. This state-of-the-art decoder will provide all the pleasures of high quality, digital on-board sound and the benefits of today's DCC technology. Each sound equipped locomotive comes with multiple horns to allow you to customize the locomotive to your personal tastes or more closely match your prototype railroad. InterMountain sound equipped locomotives have all the features found in Tsunami decoders, including the ability to set up manual notching, a built in 7 band equalizer, built in reverb, all 15 Hyper-light lighting effects, and advanced motor controls. This guide will be a quick reference for the different horns and whistles found on each InterMountain Tsunami equipped locomotive, and the default function assignments. For a complete breakdown of all of the Control Variables (CV) and Tsunamis capabilities please reference the User's Guide and Technical reference found at <http://www.soundtraxx.com/factory/>.

Horn & Whistle guide:

To change the horn/whistle on your locomotive change CV 115 to the value listed for each horn.

FT/F3/F7/FP7/FP9 units:

Leslie A125/ A200 Combo (Default) = 0
Holden M3H = 1
Nathan M5 = 2
Leslie S3L = 3
Leslie RS5T = 4

SD40-2W units:

Nathan K3LA (Default)= 0
Leslie RS5T = 1
Leslie RS3L = 2
Holden M3H = 3
Nathan K3L = 4

ES44AC/DC units:

Air Chime K5HL (Default) = 0
Nathan K3LA = 1
Holen K5H = 2

U18B units:

Leslie S5T (Default) = 0
Leslie S3L = 1
Nathan P3 = 2

DCC Function Key Mapping – Sound Units Only:

Diesel Function Key Map:		Steam Function Key Map:	
F0 (f) Headlight	F6 Effect Light	F0 (f) Headlight/Dynamo	F6 Coupler
F0 (r) Backup light	F7 Dimmer	F0 (r) Backup light	F7 Dimmer
F 1 Bell	F8 Mute	F 1 Bell	F8 Mute
F2 Horn	F9 Radiator Fans/RPM+	F2 Whistle/Air horn	F9 Effect Lighting
F3 Short Horn	F10 Air Compressor/RPM-	F3 Toggle Switch For Whistle/Air horn	F10 Coupler
F4 Dynamic Brake	F11 Brake Squeal	F4 Steam Release	F11 Injector
F5 Effect Light	F12 Coupler	F5 Brake Squeal	F12 Water Stop

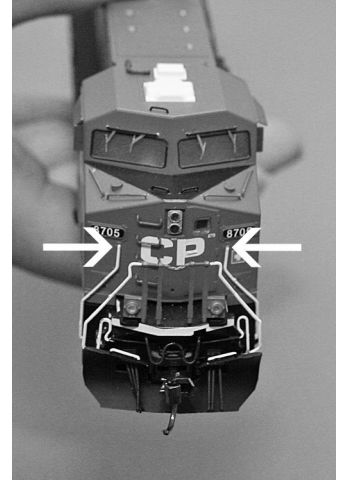
Default Address for All Locomotives: 3

SHELL REMOVAL INSTRUCTIONS

ES44AC/DC units:

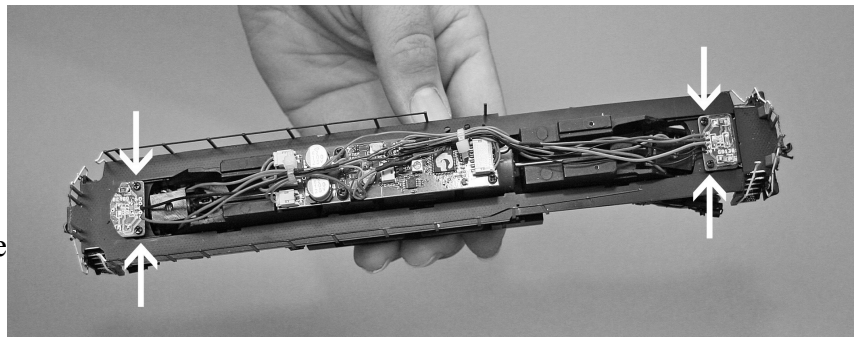


1. The handrail is attached to the cab and deck that will be removed by this process. Loosen the handrails from their attached positions as indicated by the “V” in the image. Also remove the handrails from the nose of the locomotive as indicated.



2. To remove the shell, firmly grip the fuel tank area and the center area of the body. Gently rock the shell back and forth to release the holding tabs and lift straight up. Watch that the handrails do not get caught on the body deck or cab while being lifted off.

3. Once you have the body off you will have full access to the circuit board, speaker (sound units only), trucks, and light circuits. If you need to remove the skirt deck, remove the four (4) screws holding in the light boards (as in indicated by the arrows). The light boards will then release the skirt to be lifted off
4. To reinstall the body shell just reverse the previous instructions.

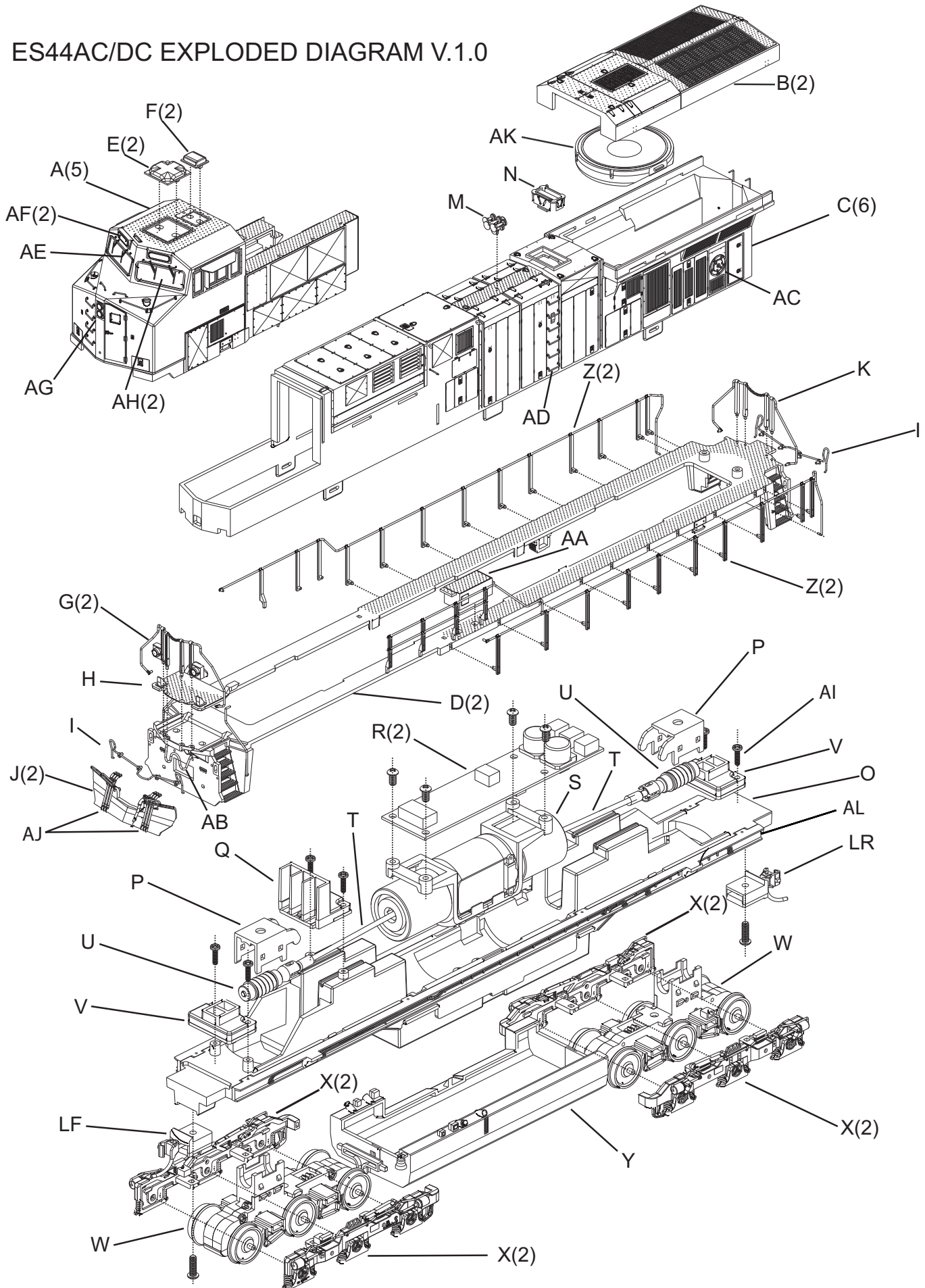


MAINTENANCE TASKS

Your InterMountain locomotive is designed to provide hours of enjoyment with little or no maintenance. On occasion the drive gear mechanisms should be lubricated. Utilize a plastic compatible lubricant such as Labelle® 107 Oil. To lubricate your locomotive place a few drops on the gears of the drive mechanism. Only a small amount is required.

Service Needs: Although rare, at some time you may require service for your locomotive. Please contact InterMountain Railway Company service department by either email (service@intermountain-railway.com), or telephone (800-472-2530), whenever you have a question or need a repair.

ES44AC/DC EXPLODED DIAGRAM V.1.0



ES44AC/DC Exploded Diagram V.1.0 – Legend*

*Note: Number in parenthesis is variations.

Part	Description	Part	Description
A(5)	3-Window Cab w/No Nose Door Window	P	Worm Cover
	3- Window Cab w/Nose Door Window	Q	Light Deflector High Number Boards
	3-Window Cab w/Low Numberboards	R(2)	SoundTraxx Motor Decoder w/o Sound
	4-Window Cab		SoundTraxx Motor Decoder w/Sound
	TBA	S	Drive Motor
B(2)	Radiator Cab Roof w/High Rear Light	T	Drive Shaft
	Radiator Cab Roof w/No Rear Light	U	Worm
C(6)	Body w/No Rear Light & 2 Vent Dynamic Brake	V	Light Deflector Front / Rear / Low Number Boards
	Body w/Low Rear Light & 3 Vent Dynamic Brake	W	Drive Truck
	Body w/Low Rear Light & 2 Vent Dynamic Brake	X(2)	High Adhesion Truck Side Frames (R/L)
	TBA		Steerable Truck Side Frames (R/L)
	TBA	Y	Fuel Tank (R/L)
	TBA	Z(2)	Side Handrails (R/L)
D(2)	Skirt		Cab Handrails (R/L)
E	Antenna Dome	AA	Walkway Cabinet
F(2)	Round GPS Dome	AB	MU Cable
	Square GPS Dome	AC	Brake Wheel
G(2)	Front Handrails w/Ditchlights	AD	Grab Irons (Complete Set)
	TBA	AE	Windshield Wipers
H	Pilot Deck	AF(2)	High Number Boards w/Round Corners
I	Coupler Release Lever		High Number Boards w/Square Corners
J(2)	Tall Snow Plow	AG	Headlight / Rear Light Bezel
	Short Snow Plow	AH	Cab Windows
K	Rear Handrails	AI	Screws
LR	Rear Coupler (Kadee #5)	AJ	MU Hoses Front / Rear
LF	Front Coupler (Kadee #26)	AK	Speaker
M	Airchime K5HL Air Horn	AL	Under Skirt (Right or Left)
N	Exhaust Stack		
O	Drive Frame		