



The  
Moonlight Post

---



ALL ABOUT  
WITCHCRAFT



The  
Moonlight Post

BROUGHT TO YOU BY THE MOONLIGHT SHOP

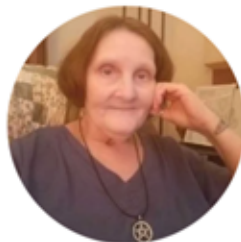


***YOUR SOURCE  
FOR  
HIGH QUALITY  
WICCA AND PAGAN  
PRODUCTS***



I love my Goddess morning coffee and night time tea mug. Shipping time was very fast. 💙💙🌙🌙  
Thank the Goddesses I found your store. Much love Blessed Be!

— Sheryl C.



I love everything from moonlight shop. I have so much stuff and appreciate all the help I got from James. I will be back to buy more.

— Debi C.



Still Love The Moonlight Shop, this was my 2nd order and I have already placed a third one. Products are quality shipping is fast and customer service is superb.

— Johnnie M K.

# FREE PENTACLE

## OF THE BLACK ONYX

1.

**RECORD A SHORT VIDEO REVIEW OF THE MAGAZINE**

(BE SURE TO SHOW THE MAGAZINE ON YOUR TABLET, COMPUTER, IN KINDLE OR PRINT)

2.

**POST IT ON YOUTUBE AND SEND THE LINK TO:  
INFO@THEMOONLIGHTSHOP.COM**

*(INCLUDE THE LINK: [HTTP://THEMOONLIGHTPOST.COM](http://themoonlightpost.com) IN THE VIDEO DESCRIPTION)*

3.

**GET YOUR NEW PENTACLE OF THE BLACK ONYX NECKLACE 100% FREE OF CHARGE.**

**ENJOY!**



THE MOONLIGHTSHOP

**BEST SELLER**

**WIN  
A FREE PENTACLE**





*So You Want To Be A Witch?*



## DEAR FELLOW WICCAN,

*Merry Meet and Brightest Blessings to you!*

*Welcome to another issue of The Moonlight Post. In this installment, we are going to explore the wonderful world that is Witchcraft!*

*Whether you're a beginner to the Craft or a seasoned witch, we truly hope that this issue will be a lifelong guide and trusty companion.*

*In these pages, you will discover the following:*

*The difference between Wicca, witchcraft, and paganism (once and for all!)  
The tools a beginner witch just can't live without  
A step-by-step guide to making your own spells and rituals with confidence  
How to come out to your family as a witch*

*And so much more!*

*The articles are arranged so that you'll build your knowledge little by little. Towards the end of this issue, you will hopefully be able to perform your very own ritual.*

*Performing magick may sound daunting at first. But with proper understanding and practice, you'll proudly call yourself a witch in no time! Besides, the most fulfilling things are the ones you worked hard on, right?*

*Let's dive right in!*

## BLESSED BE



*Wicca, Witchcraft & Paganism*

9

*The Witch's Must-have Tools*

12

*The Two Rules of Witchcraft*

21

*The Types of Witches*

24

*Write Your Own Spell*

29

*The Witch's Dictionary*

36

*The Basics of Practicing Witchcraft*

40

*So What Exactly is Witchcraft?*

44

*My Favorite New Moon Ritual*

48

*How To Come Out as a Witch*

51





**WICCA,  
WITCHCRAFT,  
& PAGANISM:**

**ARE THEY DIFERENT?**

As you grow deeper in your spiritual journey, you will encounter these terms more and more: Wicca, witchcraft, and paganism. They are used interchangeably sometimes. At other times, you might say one thing but mean the other. Yes, there will be some confusion, but this is what this article is for!

Let's get straight to it. While the three words are related, they are distinct from each other. Paganism is a general term for many religions outside the Judeo-Christian mold. Wicca is a specific type of paganism. And while you may associate Wicca and paganism to religion, witchcraft is more of a practice and not necessarily essentially linked to religious practice.

In the next section, you will see the characteristics of Wicca, witchcraft, and paganism. This knowledge always comes in handy, so let's dig in!

## WICCA

Wicca is a modern religion popularized mainly by Gerald Gardner in the 1950s. Wicca is technically a pagan religion (although some Wiccans prefer not to call themselves Pagan). Experts would say that the witchcraft practiced in Wicca is different from what the ancients did. Still, many Wiccans do witchcraft.

Wicca does not have a go-to document and it is often a very personal religion. Finding a rigid definition of Wicca would be impossible. But in general, Wiccans honor the nurturing powers of nature and commit to living in balance with the Earth.

There are many traditions under Wicca. You have Gardnerian, Dianic, Alexandrian, to name a few. Each tradition or path has specific beliefs and practices which make them distinct from others.

However, there are Wiccan core beliefs that are practiced throughout many or most traditions. These are the Wiccan Rede and the Threefold Law. (There's an article about these in this issue, so make sure to check it out!)

## WITCHCRAFT

Witchcraft is an umbrella term to refer to a practice involving magic and spellwork. Witches believe that the Earth has infinite power - energies, frequencies, and vibrations - and that you can perform certain spells and rituals to manifest this power. You yourself have power, which you can use to interact with the Earth's!

While Wicca and witchcraft (or Wiccan and witch) are used interchangeably, not all Wiccans practice witchcraft. You may do so, if you choose to. And not all those who practice witchcraft are Wiccan. Some witches are even Christian! But that said, witchcraft doesn't necessarily have to be tied to a religious practice.

### HISTORICAL TIDBIT: THE 'W' WORD



*Gerald Gardner and his fellow trailblazers in the 1950s made efforts to revive the terms Witch and witchcraft. Of course, we're familiar with the European witch hunts and the Salem trials, which gave witchcraft a bad reputation. By reclaiming these terms, Gardner and his fellow Wiccans asserted their right to religion and took back the dignity of witchcraft. Many witches capitalize the 'W' - as in Witchcraft - to set their practice apart from the propaganda of the past.*

## PAGANISM

The word pagan comes from the Latin word *paganus*, meaning "country dweller" or "civilian". It was first used by early Christians to name people who were non-Christians, who worshipped multiple deities instead. Over time, and even until now, the term has come to refer to people who aren't members of any of the world's major religions.

Paganism is not a religion per se. Rather, it is an umbrella term that points to the many spiritual paths that recognize divine presence in nature. These are people and groups who worship deities who had existed before the Judeo-Christian God.

The negative ideas that have built around paganism has much to do with the early Christian church and its widespread campaign of converting people to become followers of Christ. Those who did not were accused of

worshipping the devil.

## IN CONCLUSION

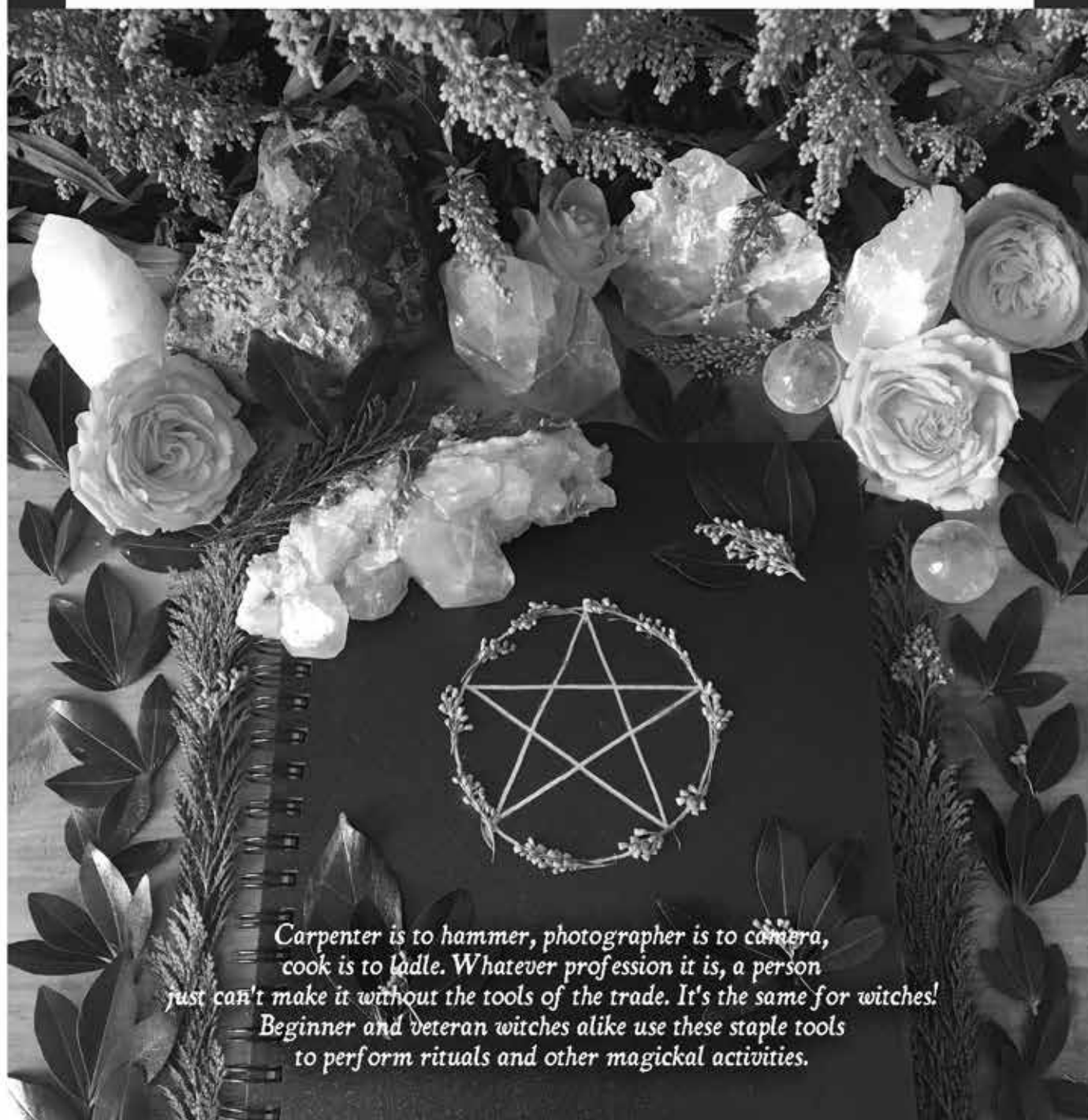
In this article, we grasped the essential meanings of the terms Wicca, witchcraft, and paganism. As you may have noticed, they are very broad terms and encompass different forms and traditions. Further reading is highly encouraged, especially when you want to deepen your spiritual practice.

You can be a pagan but not Wiccan, a Wiccan but not a witch, or a witch but not a pagan. There are many possibilities!

You have to remember this, though. Even though certain groups paint a negative picture of Wicca, witchcraft, and paganism, they are simply not true. Don't let anyone's skewed judgment discourage you from practicing your beliefs.



# The Witch's Must-Have Tools



*Carpenter is to hammer, photographer is to camera,  
cook is to ladle. Whatever profession it is, a person  
just can't make it without the tools of the trade. It's the same for witches!  
Beginner and veteran witches alike use these staple tools  
to perform rituals and other magickal activities.*

# Athame



*An athame is the witch's ceremonial knife or dagger. Tradition dictates that it should be black-handled and double-edged, although certain practitioners say that a dagger of any design will work just fine. The tip and edges of the blade are usually dulled to prevent the witch from harming themselves while performing rituals. Special symbols may be engraved along the athame.*

*The athame is primarily used in rituals, particularly in casting a circle or directing one's energy. Some traditions encourage using it to cut herbs, especially when one is doing kitchen witchery. This is done so that the kitchen witch will be more familiar with the athame.*

*Being one of the four elemental tools of Wicca, the athame represents fire. Other traditions assign the element of air to it. It also symbolizes the masculine and is used with the chalice (a feminine symbol) in ceremonies involving procreation. The double edges of the blade also stand for the dual nature of the universe, like life and death, day and night, masculine and feminine.*



# Chalice



*The chalice is the second of the four elemental tools of Wicca. It represents both water and the womb of the Goddess. The chalice is used for ceremonial purposes and usually holds liquid offerings like wine or water. In rituals involving a coven, the chalice is passed around for members to drink from. Today, it is commonly made of metal or silver.*

*In rituals concerning procreation, the chalice is used with the athame. The chalice is filled with liquid and the athame is plunged into the chalice. It is symbolic of sexual intercourse and universal creativity.*



# Pentacle



*Perhaps the most widely known Wiccan symbol, the pentacle is also a staple on the witch's altar. It is similar to a pentagram, except that in Wicca, a pentacle is primarily any three-dimensional symbol used for ceremonial magick. Today, the pentacle is most popularly visualized as a five-pointed star with a circle drawn around it. It is made out of paper, metal, wood, or any strong material.*

*The main use of the pentacle is for blessing and charging tools. Outside of rituals, the pentacle is also a popular pendant among Wiccans. It represents power, protection, and Wicca itself. Wiccans wear pentacle necklaces the way Christians wear cross necklaces.*

*The pentacle is also one of the four elemental tools and symbolizes earth. The layers of symbolism surrounding the pentacle actually run deep. And depending on one's belief, it can represent a lot of things. For example, the five points of the pentacle could stand for the four elements (earth, air, fire, water) and the Spirit, with the circle representing the Universe.*



# Wand



*The wand is the fourth of the elemental tools of Wicca. It represents the element of air, although some Wiccans would associate it with fire. Traditionally, wands were carved from the wood of a sacred tree, such as oak, holly, or willow.*

*In modern times, however, they are made from metal, crystal, or any other sturdy material. They are usually adorned with crystals or gems.*

*In rituals, wands are used to invoke spirits, cast circles, and direct energy. It is similar in use to the athame, and witches who prefer the "less violent" tool use the wand.*





# Book of Shadows



*Wiccans and practitioners of witchcraft do not have any kind of fixed religious text. They don't read a Bible, Quran, or Torah because there isn't one. However, witches do keep a Book of Shadows.*

*A Book of Shadows is a personal manual for practicing witchcraft. It may have been passed on to a witch, or a witch may make one from scratch. There are no hard rules when making a BOS, but it usually contains the witch's favorite rituals and spells. Other useful information can also be written down, like Sabbat correspondences, important dates, and the witch's personal thoughts on their practice.*



# Cauldron



*Similar to the chalice, the cauldron is used to store liquids. The main difference in function is that a cauldron can handle the heat from fire, and can therefore be used in mixing brews and elixirs. It is also used as a centerpiece in a burning ritual, where participants throw items into a cauldron, and as a container of water for scrying. It is traditionally made from cast-iron.*

*The cauldron represents the womb of the Goddess, as well as a symbol of rebirth. Ancient Celtic mythology points to a cauldron in which warriors killed during battle were placed. The warriors would be resurrected to fight again. It is associated with the goddess Cerridwen, who is known as the keeper of the cauldron and the secrets of the Universe.*



# Smudge Sticks



*Smudge sticks are an essential part of a ritual. Before the ritual can take place, the sacred space must be cleansed through smudging. A witch can also cleanse the tools used for the ritual, as well as their own body, aura, or energy. It was the Native Americans who first practiced smudging as a way to create a cleansing smoke bath.*

*Incense can be used for smudging, but the most common smudge sticks are made from the following: sage, lavender, sweetgrass, or cedar. Smudge sticks are now commercially available, although they can always be made at home.*



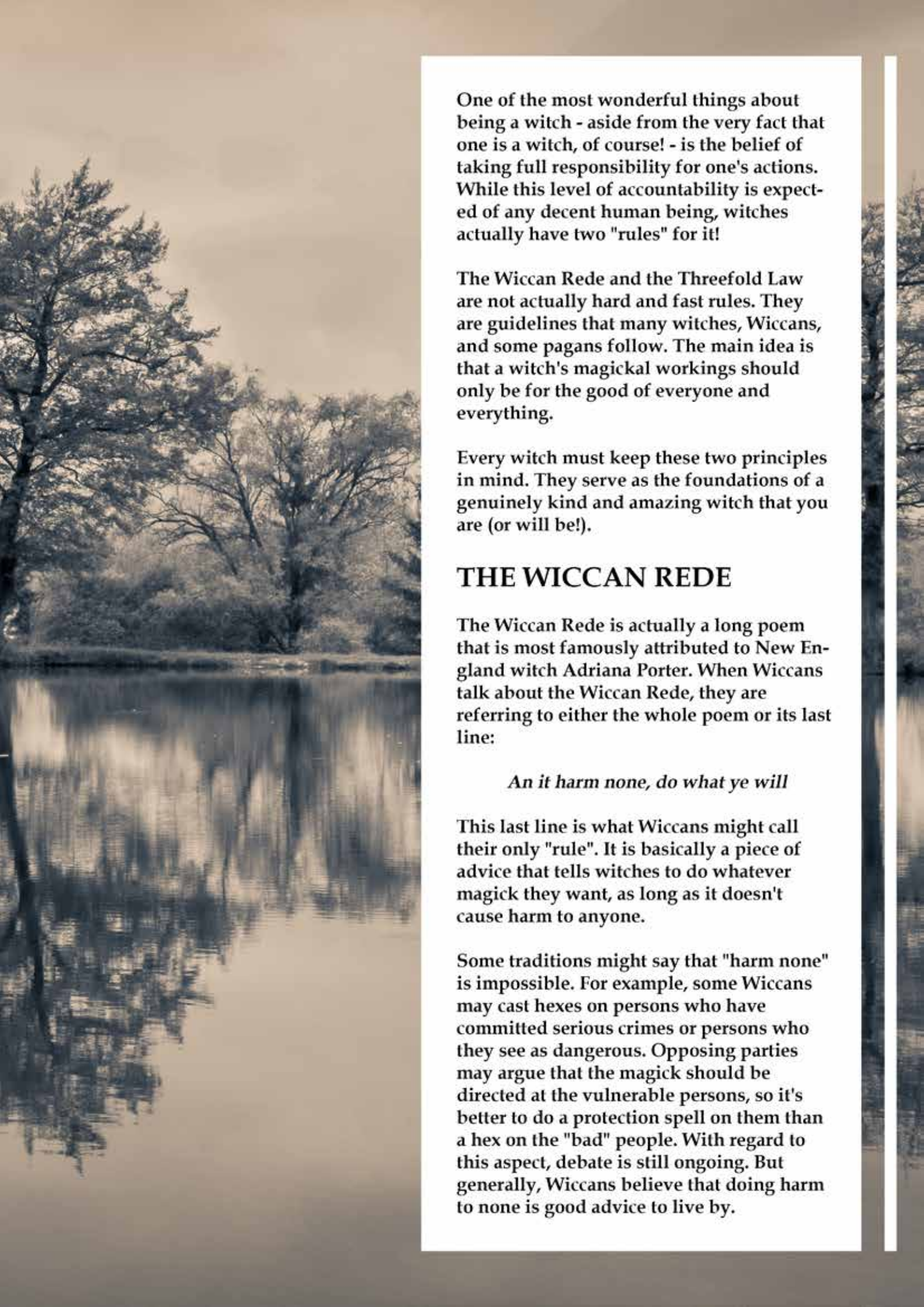




THE TWO 'RULES' OF  
WITCH  
CRAFT

BY MEL  
MILCH

THE TWO 'RULES' OF

A serene landscape with trees and a body of water reflecting the scene. The trees are dark and silhouetted against a lighter sky, and their reflections are clearly visible in the calm water below. The overall mood is peaceful and natural.

One of the most wonderful things about being a witch - aside from the very fact that one is a witch, of course! - is the belief of taking full responsibility for one's actions. While this level of accountability is expected of any decent human being, witches actually have two "rules" for it!

The Wiccan Rede and the Threefold Law are not actually hard and fast rules. They are guidelines that many witches, Wiccans, and some pagans follow. The main idea is that a witch's magickal workings should only be for the good of everyone and everything.

Every witch must keep these two principles in mind. They serve as the foundations of a genuinely kind and amazing witch that you are (or will be!).

## THE WICCAN REDE

The Wiccan Rede is actually a long poem that is most famously attributed to New England witch Adriana Porter. When Wiccans talk about the Wiccan Rede, they are referring to either the whole poem or its last line:

*An it harm none, do what ye will*

This last line is what Wiccans might call their only "rule". It is basically a piece of advice that tells witches to do whatever magick they want, as long as it doesn't cause harm to anyone.

Some traditions might say that "harm none" is impossible. For example, some Wiccans may cast hexes on persons who have committed serious crimes or persons who they see as dangerous. Opposing parties may argue that the magick should be directed at the vulnerable persons, so it's better to do a protection spell on them than a hex on the "bad" people. With regard to this aspect, debate is still ongoing. But generally, Wiccans believe that doing harm to none is good advice to live by.

## THE THREEFOLD LAW

Closely related to the Wiccan Rede, the Threefold Law states that whatever magickal act a witch does, the Universe will return it to them three times. It works like how the concept of karma works, only that the Threefold Law emphasizes the degree of rebound a witch will receive.

Now, it's not clear what "threefold" really means. Some believe that the comeback will come in three separate parts. So for example, if you cast a prosperity spell on your friend, the Universe will reward you three different times - a free cup at your favorite coffee shop, a relaxing weekend with your family, or even some good news at work! Some think that "threefold" means you will get three times the intensity of the magick that you put out.

But while that part of the Threefold Law is still up for discussion, one thing is clear: Everything in the Universe is connected and all of your actions ultimately impact yourself.





# THE TYPES OF WITCHES: WHICH ONE ARE YOU?

DID YOU KNOW THAT THERE ARE DIFFERENT TYPES OF WITCHES? NO, I'M NOT TALKING ABOUT THE TYPE TO GIVE OUT POISONED APPLES OR THE ONE WHO LURES CHILDREN INTO HER CANDY-COVERED HOUSE. THOSE WITCHES ONLY EXIST IN FAIRYTALES!

MIND YOU, THE WITCHES OF THE REAL WORLD ARE BEAUTIFUL, KIND-HEARTED, AND DO MAGICK ONLY FOR THE GOOD! AND THERE ARE DIFFERENT TYPES, DEPENDING ON WHICH AREA THEY FOCUS ON. IN THIS ARTICLE, I DO NOT INCLUDE THE DIFFERENT TYPES ACCORDING TO TRADITION (GARDNERIAN, DIANIC, ETC.)

SO, WHAT TYPE OF WITCH ARE YOU?



# TRADITIONAL WITCH



Today, witchcraft is commonly associated with Wicca and other neo-pagan beliefs. But before these, witchcraft has been existing for centuries. Traditional witches are those who do witchcraft the "old" way - that is, before these modern religions and practices.

If you are a traditional witch, you are interested in the historical aspect of witchcraft and want to flesh out history in your current practice. You pay close attention to ancient cultures, folklore, myths and legends, geography, and ancestry.

# ECLECTIC WITCH



If the traditional witch had an opposite, it would be the eclectic witch. While the former adheres to tradition, the latter is a free spirit. They draw inspiration from many sources and ultimately follow their own personal brand of witchcraft.

You are an eclectic witch if you don't subscribe to one specific tradition, culture, or religion. Your witchcraft can involve religion or be completely secular. You make your own rules and follow your own wonderful path.

# SECULAR WITCH



Since witchcraft doesn't necessarily need to be attached to any religion or belief system, the practice of witchcraft can be secular. This means that there are secular witches who don't associate magick or spellwork with religion.

As a secular witch, you still cast spells and use herbs, stones, and candles like any other witch. The only difference is that you don't connect these activities to any deities or higher being. But just because you aren't religious doesn't mean you're not spiritual. You can still follow a spiritual path, but not attach it with religious meaning.

# CEREMONIAL WITCH



While some witches like incorporating magick into their everyday tasks, that is not how the ceremonial witch rolls. These types take rituals seriously and like to incorporate these in many areas of their witchcraft.

Telltale signs that you're a ceremonial witch: you look forward to days when you can hold a ceremony, you like thinking about magickal correspondences to use in rituals, you know which deities to invoke for a specific ritual.

# ELEMENTAL WITCH



Earth, air, wind, and fire - for the elemental witch, these four are the primary aspects of their craft. The elemental witch honors each element and recognizes their essence in nature. For them, life would simply not exist if a single element is missing.

Do you have a representation of each of the four elements in your altar? Do you invoke the elements in your ritual or spellwork? Do you identify with a specific element and choose it as your favorite? If yes, then you must be an elemental witch!

# KITCHEN WITCH



Movies and TV often wrongly depict witches as scary ladies hunched over a bubbling cauldron. But interact with a kitchen witch up close, and discover that her cauldron holds the tastiest witch's brew in the world!

Kitchen witches are most powerful at home, where they make the best foods and drinks. They like to play around with different herbs and essential oils. Because these witches are largely home-based, they are very hospitable, warm, and nurturing. Are you a kitchen witch?

# SEA WITCH



Often depicted as deep and mysterious, sea witches feel a strong affinity to the ocean and the moon. They often use the element of water in their magick and incorporate objects from the ocean, such as sand and shells.

If you are a sea witch, you often spend your time by the seashore. You love to look at the ebb and flow of the waves as you think about the secrets of the universe. For you, the greatest power of the divine lies within the waters.

# GREEN WITCH



While all witches feel a connection to nature, green witches take it to another level. They primarily use greenery in their magickal workings. Plants and herbs are a staple in their cooking. These witches are experts at identifying plants and knowing which one can be used for a certain spell or function.

Green witch checklist - you have your own garden, you constantly learn about plants, shrubs, trees, you know your Celtic tree astrology, and you're always communing with nature!

# COSMIC WITCH



One of the more modern types of witches are the cosmic witches. Also called star witches, they like to work their magick using astrology and cosmic phenomena as their tools.

They closely follow the alignment of the stars, planets, and other celestial bodies and use their movement as correspondences to their rituals.

Cosmic witches know the cosmos by heart. Give them your date, time, and location of birth, and they'll be able to tell you your Sun sign, Moon sign, ascendant, and everything else on your natal chart. Sound familiar?

Maybe that's you!

# SOLITARY WITCH



Before actually digging into magickal activities, many beginner witches like to know which type of witchcraft they want to practice. Once they do, the next decision is whether to join a coven or become a solitary practitioner.

There are a lot of reasons why many witches take the solitary path. One of the main reasons is that a person may hear the

calling of witchcraft at a young age and began early. They don't feel the need to work with other witches in a coven setting.

Another reason is that a witch prefers to do magick on a deeply spiritual, intimate level.

If you plan on going solo, you can be any of the above-mentioned types of witches. Each path is beautiful and rewarding in its own way. Just make sure to do your homework, study your chosen craft, and practice, practice, practice!





*Write  
Your own  
Spell*

WHILE USING READY-MADE SPELLS IS PERFECTLY FINE, THERE IS NOTHING MORE MAGICKAL THAN CRAFTING YOUR OWN. THIS IS BECAUSE YOUR VERY OWN SPELL HOLDS YOUR ESSENCE - THE INTENT, CORRESPONDENCES, AND WORDS ARE NO ONE BUT YOUR OWN. WHEN YOU USE YOUR OWN SPELL, YOU MIGHT BECOME MORE FOCUSED ON CASTING THE SPELL.



# 1. *Decide on a Specific Intent.*

The intent of your spell should be clear and focused on only one thing. You can't write a spell that aims to achieve two or three specific goals. So, if your intent is a better career, then your specific intent should be "I'm getting that promotion" or "I will get a pay raise".

One way to declare your intent properly is to write it down. Be mindful of how you state your intent, paying attention to whether it would cause harm to anyone.



## 2. *Time your spell, if you want to.*

For a lot of witches, timing is key when performing spells. Certain times of the year hold special energy and meaning for specific intents.

For example, spells that involve renewal and new beginnings are said to be most powerful when done during the new moon or on Ostara (spring equinox). Many witches also time their spells according to the phases of the moon. For example, spells that deal with banishing are believed to work best during the waning moon.

Timing your spell isn't absolutely necessary, but it will increase your spell's effect. If you want to do that, then you should keep a calendar of the moon phases, Sabbats, and other special days.



# 3. *Come up with your correspondences.*

For Wiccans, symbolism is crucial in witchcraft. Everything - from colors to numbers to herbs - have a magickal link with aspects of Wicca. There are corresponding objects for Wiccan dates (Sabbats, Esbats, and moon phase) or specific intents.

Besides the three that's already mentioned, correspondences can be any of the following - crystals, gemstones, flowers, animals, elements, moon phases, metals, and sacred woods. You can also call on specific gods and goddesses for your spell.

Correspondence charts are available online. You can check those to make sure your correspondences are correct.

Like timing, correspondences serve as aids and not the primary factor in crafting a spell. But if it makes sense for you and the tradition you follow, then there's nothing to lose if you used corre-





## 4. *Know which Tools to use.*

When casting your spell, tools will help you direct energy towards your intent. You can use any of the basic witchcraft tools, like the athame or chalice. However, you may also use other correspondences that fit the symbolism.

For example, you can use candles with specific colors. A red candle symbolizes passion, so you could use this for spells related to love and romance. If you want to call on to a god or goddess, having an image of that deity would help you focus on invocation.

Having the right instruments for your spell is really up to you. What's important is the symbolism of that object and how strong its magickal links are with your intent.



# 5. Be wary of Wording.

In spellcasting, words are very powerful. They could mean the difference between a good spell or a bad one. Just one word could alter the spell and could potentially harm another, even if it's done unintentionally!

Aside from choosing your words wisely, you could also decide how you want to deliver your spell. Will it be a short, simple prayer? Will it be a long stanza? Many witches prefer to write their spells with rhyming stanzas, so they're easier to remember.



## 6. *Test it out.*

The best way to know if your spell is effective or not is to just give it a go! The results of your spell should manifest within a few days or weeks. But if you don't notice any difference within a lunar month, then you might want to see if you should add some changes to your spell.

Of course, a spell for a specific intent should be coupled with action from you. You can't expect to get that promotion if you're always late or not submitting your reports on time.

Finally, the best way to track your progress is to write down anything that has to do with your spell. The best place to write down your observations is on your Book of Shadows.

# THE WITCH'S DICTIONARY

**ONE OF THE THINGS A BEGINNER WITCH SHOULD IMMEDIATELY LEARN IS THE WORDS USED IN WITCHCRAFT.  
LEARNING ALL ABOUT WITCHCRAFT WILL BE EASIER IF YOU KNOW THE TERMINOLOGY.  
THESE ARE THE MOST COMMON WORDS IN THE WORLD OF WITCHCRAFT.**

## THE WITCH'S DICTIONARY

**ADEPT** (noun) - Someone who is greatly skilled in witchcraft

**ALTAR** (noun) - A structure, usually a table, that is used as a center of worship, rituals, ceremonies, spellwork, and other activities

**AMULET** (noun) - A piece worn on the body (usually a necklace or bracelet) that is meant to provide protection and luck to the wearer

**ASTRAL PROJECTION** (noun) - The act of having an out-of-body experience, i.e. leaving the physical body, transferring to the astral body, and traveling to the astral plane

**ASTROLOGY** (noun) - The study of the locations and movements of celestial bodies (like the stars and planets) that is rooted in the assumption that these affect humans and human affairs

**ATHAME** (noun) - A witch's ceremonial knife, usually found in the altar

**BALEFIRE** (noun) - A large outdoor fire traditionally burned during Beltane, Midsummer, and Yule

**BESOM** (noun) - A bundle of twigs that are attached to a wooden handle; a broom

**BOOK OF SHADOWS** (noun) - A book used as a personal manual for Wiccans and which contains spells, rituals, and the practitioner's notes; can be handed down

**CAULDRON** (noun) - A large metal or earthenware pot used for boiling and making brews, potions, and elixirs

**CHALICE** (noun) - A drinking cup or goblet; represents water and the divine feminine (womb)

**CLAIRAUDIENCE** (noun) - The extraordinary psychic ability to hear sounds beyond what the common person would; compare

with clairvoyance

**CLAIRVOYANCE** (noun) - The extraordinary psychic ability to see objects or persons beyond what the common person would

**COVEN** (noun) - A group of witches, usually composed of 13 members; a community of witches who follow the same tradition and do activities together

**COVENSTEAD** (noun) - A place where members of a coven have designated as their permanent ritual venue

**EARTHBOUND** (noun) - A spirit or entity that has been confined to the earthly realm

**ELEMENTAL** (noun) - A spirit or entity that is bound to nature through the four elements of earth, water, wind, and fire

**ESBAT** (noun) - A ritual usually carried out during the full moon (others perform it during the new moon)

**FAMILIAR** (noun) - A spirit, often taking the form of an animal like a cat, who serves as a witch's companion

**GROUNDING** (noun) - The act of restoring connection with the material world

**HYDROMANCY** (noun) - A method of divination through water or other liquids

**INCARNATE** (adjective) - Embodied in human or physical form

**LEVITATION** (noun) - The phenomenon of an object or person being raised in the air

**MAGIC** (noun) - Broadly, the method of using elements of the physical world to enact changes in it

**MAGICK** (noun) - According to Aleister Crowley who coined the term, magick is the

## THE WITCH'S DICTIONARY

act of fulfilling one's True Will and added the 'k' to distinguish from the dominant image of 'magic' (pulling rabbits out of hats); the method of using the energy of the natural world to enact change on the physical world

**MEDIUM** (noun) - A person with the skill to connect and communicate with the spirit world

**ONEIROSCOPY** (noun) - The interpretation and analysis of dreams

**PREMONITION** (noun) - A forecast of future events; a warning

**PRETERNATURAL** (adjective) - Denoting phenomena which are beyond what can occur in the natural world and therefore cannot seemingly be explained through science, but not necessarily supernatural

**PENTACLE** (noun) - A five-pointed object resembling a star and usually used as an altar item or jewelry pendant; in Wicca, a symbol usually enclosed in a circle and used for protection

**PENTAGRAM** (noun) - A five-pointed figure which resembling a star

**PSYCHIC** (noun) - A person who can perceive beyond the five senses; often said to have a "sixth sense"

**PSYCHOKINESIS** (noun) - The ability to make objects move through the power of the mind

**PYROMANCY** (noun) - A method of divination through fire

**REINCARNATION** (noun) - The process of being born again into a new physical body

**RITUAL** (noun) - A ceremony with a prescribed procedure which aims to produce



specific results

**SCRYING** (noun) - A method of divination through gazing into a reflective object, such as a crystal ball, mirror, or water

**SMUDGING** (noun) - A method of cleansing a physical space through burning sage or other herbs

**SPELL** (noun) - A magickal ritual through a spoken chant

**SUPERNATURAL** (adjective) - Denoting phenomena that are beyond the workings of the natural world and cannot be explained through science

**TALISMAN** - An object marked with magickal signs, giving the wearer powers and protection

**TELEPATHY** - A method of communication through the direct exchange of thoughts

**VISUALIZATION** - The process of building mental images as a means of attracting these images and making them manifest into reality

**WITCH** - A person, regardless whether they are male or female, who practices witchcraft



THE  
BASICS  
OF



PRACTICING  
WITCH  
CRAFT





Witchcraft is the practice of using magick to improve one's life. But if someone is looking to do witchcraft in hopes of taking a "shortcut" towards their goals, then that's where they're wrong.

Manifesting magick involves a lot of learning, hard work, and consistent practice. But put in the hours, and you'll be casting your own spells in no time!

## STUDY

When we hear the word "study", we automatically think about piles of books and homework, and all the

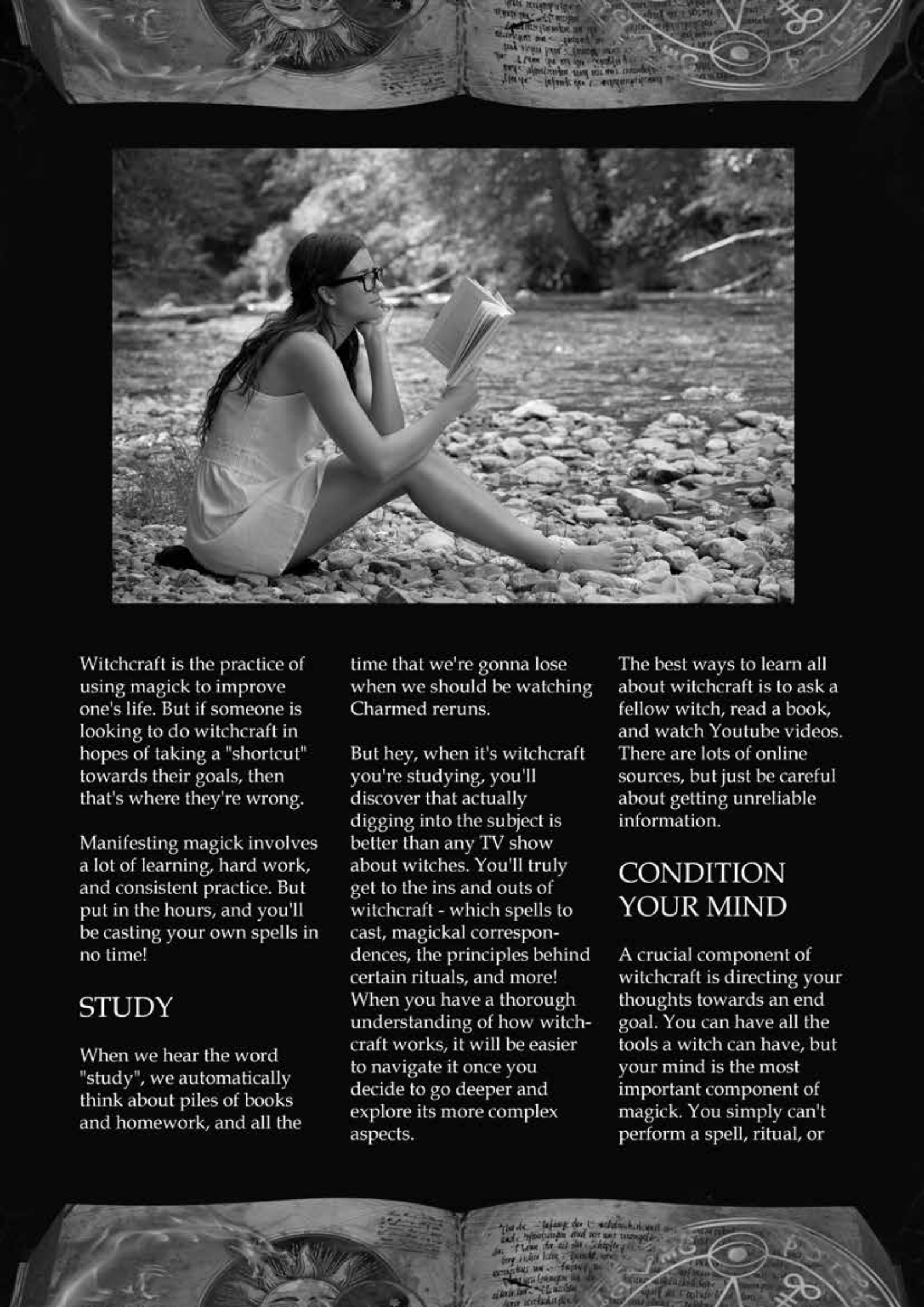
time that we're gonna lose when we should be watching Charmed reruns.

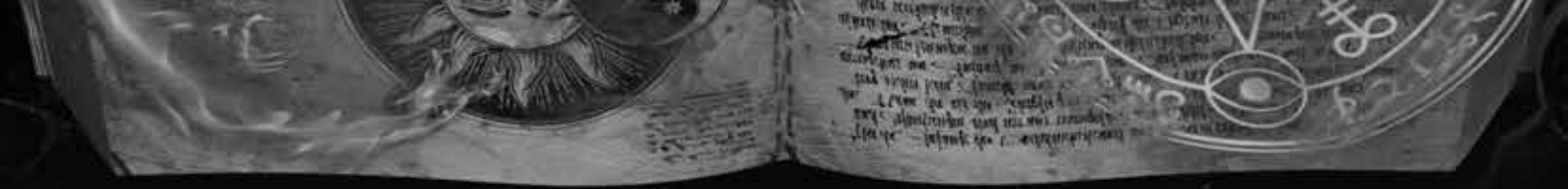
But hey, when it's witchcraft you're studying, you'll discover that actually digging into the subject is better than any TV show about witches. You'll truly get to the ins and outs of witchcraft - which spells to cast, magickal correspondences, the principles behind certain rituals, and more! When you have a thorough understanding of how witchcraft works, it will be easier to navigate it once you decide to go deeper and explore its more complex aspects.

The best ways to learn all about witchcraft is to ask a fellow witch, read a book, and watch Youtube videos. There are lots of online sources, but just be careful about getting unreliable information.

## CONDITION YOUR MIND

A crucial component of witchcraft is directing your thoughts towards an end goal. You can have all the tools a witch can have, but your mind is the most important component of magick. You simply can't perform a spell, ritual, or





any other magickal activity when your thoughts are scattered. This is why you need to condition your mind.

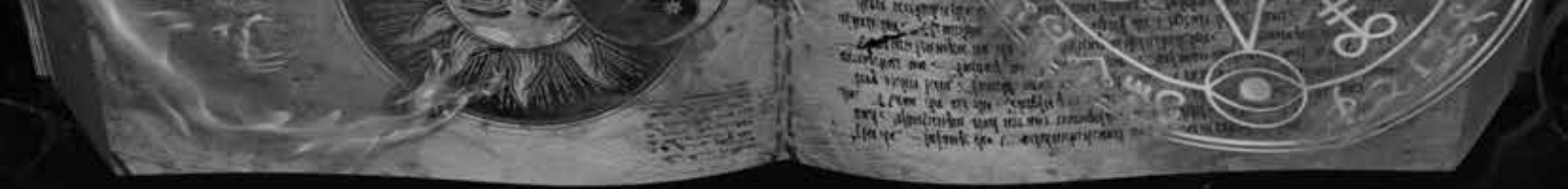
Like muscles in the body, you should also do "workouts" for your mind. Doing crosswords, Sudoku, or memory games help keep your brain in shape. Many witches say that meditation works wonders in conditioning the mind. As little as 10 minutes a day can greatly improve focus, sensory perception, energy control, and the ability to shift from one state of consciousness to another.

One important thing to consider is to have a personal moral code or ethical guidelines. This is a set of virtues that you as a witch must always adhere to. For example, the main guiding principle of Wiccans who do witchcraft is to not allow their magick to harm anyone or anything.

## GET YOUR TOOLS AND PREPARE YOUR SACRED SPACE

Tools like the athame or pentacle are effective in directing energy during rituals. More seasoned





witches will not need these tools to do magick, but they are highly recommended for beginners. The basics are the athame, pentacle, chalice, wand, Book of Shadows, cauldron, and smudge sticks.

Your altar or your sacred space doesn't have to be all that fancy. When you're starting out, the basic tools are enough, as well as other symbols according to your preference. Over time, you can add decorations and other tools on your altar as needed.

## PRACTICE, PRACTICE, PRACTICE!

You have the knowledge and you have the tools. The only thing you have to do now is actually getting into it! You can do a simple ritual during the next full moon or Sabbat. Plan your day, prepare what you need, and make sure to give it your all.

But don't worry if you feel like you didn't get it right. As with any skill, getting better at witchcraft takes A LOT of effort. It may come naturally

to some, but most people really start with baby steps.

Speaking of developing expertise, you must always remain humble and keep in mind that learning witchcraft isn't a one-time thing. There will always be new stuff to learn. For example, you might want to widen your knowledge and dive into another tradition of witchcraft.

Witchcraft is such a wide, wide world that one lifetime to explore half of it isn't enough. So keep learning and keep practicing! The rewards will be endless.





SO WHAT  EXACTLY IS  
WITCHCRAFT



# BLACK MAGIC? NO. ANIMAL SACRIFICE? NOPE. DEVIL WORSHIP? UGH. NO!



The practice of harnessing the powers of nature and one's own to manifest changes according to one's intent? Finally. Yes!

What you just read is the simple definition of witchcraft, stripped down to exclude the misconceptions surrounding it.

Fascinating how the term has evolved to conjure images of the evil witch from Snow White, right?

But the truth is, witchcraft is far from evil. It is simply the system of recognizing that energy is present all around and within - energy that you can work with to benefit yourself, your community, and even the world.

## HOW WITCHCRAFT WORKS

*"If you want to find the secrets of the universe,  
think in terms of energy,  
frequency, and vibration."  
Nikola Tesla, Serbian-American  
inventor*

A basic rule of nature is that everything has energy. This energy can be at rest or in motion, but the common denominator

is that matter vibrates with this energy. Even you yourself have energy!

So how is energy associated with witchcraft?

Doing magick is a matter of willing energy from your body and your natural surroundings to direct changes in your environment. A witch's body has vibrations - physical and spiritual vibrations - that can merge during rituals to create a pathway where energy can flow through them. Witches don't only use their own energy, but from the earth's elements, like energy from the sun or moon.

In other words, witchcraft is controlling magick to change your reality! So for example, if you wish to attract love into your life, you may do so by impressing your will and energy towards this intent.

Your thoughts and words are manifestations of your energy, and you use these to focus your energy on a particular intent. You can do this by performing a ritual - casting a circle, using tools and symbols of the elements, reciting a prayer, etc. As you gain more knowledge and experience, you may train yourself to do magick without using any tools at all.

## WHY DO WITCHCRAFT?

Ask some witches why they practice witchcraft and each one would probably have a different answer. But when it comes down to it, the general reason is to change one's reality for the better - whether it be in the area of finances, relationships, health, or overall well-being.

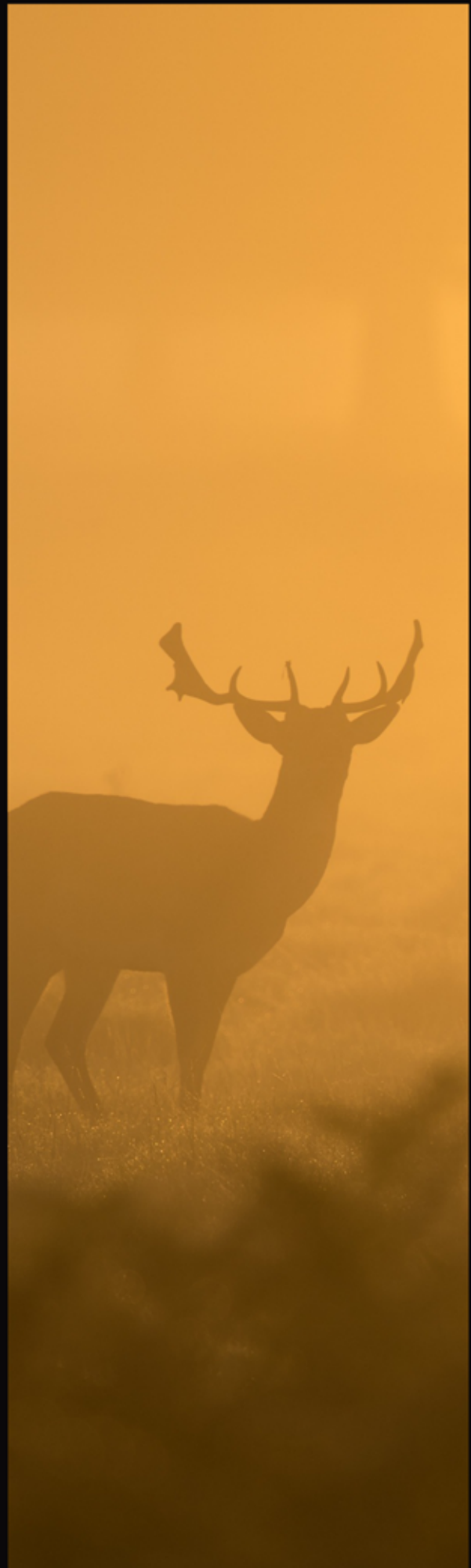
You may cast spells or do rituals to manifest the following: a better job, protection from harm, attracting a potential partner, or safety on the road. You may even do a banishing ritual to get rid of an unwanted thing in your life, such as a bad habit.

However, witchcraft isn't only for personal gain. Witches do magick for others, too! You can direct your energy to improve the circumstances of your loved ones. If you want to send positive energy towards survivors of a natural disaster all the way across the globe, you sure can!

## WITCHCRAFT AND INTENT

Witchcraft for Wiccans comes with this crucial caveat: "An it harm none, do what ye will." This is the most highlighted passage of The Wiccan Rede and is considered Wicca's Golden Rule.

A Wiccan who practices witchcraft should never use magick to harm a person, animal, or any other living being. They keep an eye out for their intentions so that these will not go against the free will of another. Aside from being conscious of their intentions, Wiccans are also careful of the unintentional harm that their magick may cause others. They usually avoid this by concluding the spell with the "harm none" clause and sending a message to the Universe that the spell is only intended for good.



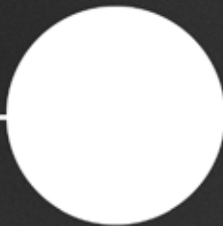
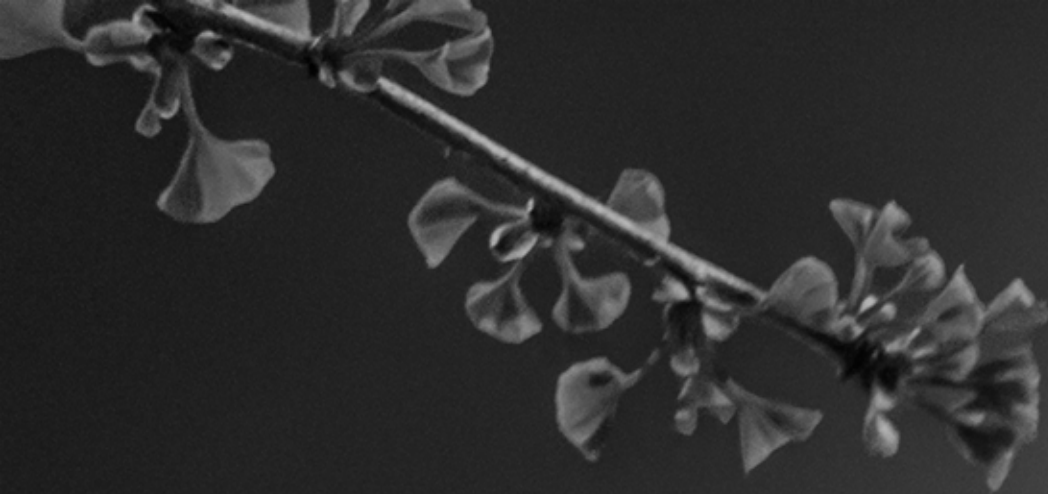


# MAGICK

## LEFT TO RIGHT

EXCLUSIVELY ON:

  
THE  
MOONLIGHTSHOP




MY FAVORITE

**NEW MOON**

**RITUAL**





Now that we've covered the basics of witchcraft, it's time to put this knowledge to the test! Perform this ritual on the next new moon. Be sure to write down your experience on your Book of Shadows!

The moon is probably the most important heavenly body to us Wiccans. It is the heavenly body closest to us. We draw on the Moon's power for magick, and we cast our spells according to her cycles.

The moon's energy is highest during a Full Moon and a New Moon. In ancient times, the first sight of the moon was a reason for celebration. It signified that the dark had passed, and the full moon is soon to come.

## WHAT IS THE NEW MOON?

The New Moon is the crescent Moon formed when we see the first peak of light. This is a time of all things new. The energy of this phase promotes new beginnings on all aspects. It's the beginning of relationships, the beginning of a new career, and the beginning of a new way of thinking. This is the time for change and the time for new opportunities and ideas. It is the time for rebirth and a new life.

# THE NEW MOON RITUAL

New Moon workings can be done from the day of the new moon to three days after. Spells performed according to the new moon are for new beginnings, love, health, and career opportunities.

This ritual is to welcome the moon back. It's best if you perform this outside under the light of the New Moon, facing the west. You can do this as a group or alone.

## YOU WILL NEED:

A smudging stick  
A Moon candle (white unscented pillar-candle)  
Blessing oil  
A hand-held mirror  
A pen  
3 pieces of parchment paper

## STEPS

1. Set up your altar with silver and white decorations.
2. Perform a smudging ritual to cleanse your space and your aura.
3. Cast your circle.
4. Get your Moon Candle. Wrap it in black cloth, and place it on your altar.
5. Look up to the New Moon.
6. Once you find it, unwrap the candle and hold it high and say:

*"Welcome back, Moon! We're glad to see you again. Another cycle has passed another month gone by and our lives have moved forward."*

7. Place the candle on the altar and light it, still facing the moon. Say:

*"Today is a new day, and a new month begins. As the tides flow, and the moon rises above we are thankful that She has returned. She watches over us, ever constant, yet always changing, and we are thankful for her light."*

8. Next, turn to face east, where the sun will rise in the morning. Pick up the mirror and hold it so you can see the new moon behind you. Say:

*"Bring us your wisdom, your guidance, your protection, in the coming month. You are behind me at every step, watching and guiding me, and I am thankful."*

9. Place the mirror back on the altar, beside the moon candle.
10. Now this is a time for reflection and expressing gratitude. On the first piece of paper, write down all the things that you are thankful for. Give yourself time to reflect on what you have written. Give thanks to the Goddess for all of which you have received. Burn it with the flame of the white candle.
11. On the second piece of paper, write down all the things you have not been doing right lately. This

includes mistakes and errors that have hurt not only you but also others. Forgive yourself and release all the negative energies you have within. Ask the Goddess for help in correcting your mistakes and improvement in those areas. Burn the piece of paper.

12. On the third piece of paper, write down the things you want to have in your life. Write down your goals, dreams, desires and hopes. Ask the Goddess for help in accomplishing all that you have written. Keep this list with you until the next New Moon.
13. Warm the Blessing Oil over the candle for just a moment, and then anoint your forehead and wish for yourself the blessings of the moon.
14. When you are ready, blow out the candle. Then close the circle and end the ritual.





HOW TO

COME

OUT

AS A

WITCH

TO

YOUR

FAMILY

&

FRIENDS

Planning on coming out of the broom closet, but not quite sure how to do it?

Don't worry, you're not alone! Witches young and old have been struggling with this dilemma ever since.

As humans, we have a need to be loved and accepted just as we are. Our ideal world is for the people in our life to support our choices. We consider it a miracle if some of them become witches, too!

Unfortunately, we don't live in an ideal world. Many people still think that witches are horrible devil-worshipping, animal-sacrificing weirdos with black cats as best friends (not that there's anything wrong with black cats)!

And although brave witches have taken - and continue to take - great steps in reclaiming the nobility of witchcraft, the fact is some people are just closed-minded.

So yes, the more accurate reaction when someone close to us finds out we're Wiccan would range from tolerance to confusion to anger.

Here are some practical ways to hopefully soften the blow and make your relationship with family and friends better.

**IT'S ALL ABOUT  
TIMING!!!**



Don't feel pressured to come out right away. There is a time for everything - especially for something that could possibly change your life.

Perfect timing is about knowing if your loved ones are ready to hear the news. If you and your partner are in a fight, think twice about blurting it out. Or if you think that your parents' blood pressures would shoot up once they knew, then wait until they're more relaxed.

You have to also note that they may never ever be ready. And you can't wait forever, either!

So don't just wait for the right time; create the right circumstances.

For example, you could drop random witchcraft facts and anecdotes in casual conversation. The goal here is to make them familiar with witchcraft and clear up all those nasty misconceptions.

How do you know if it's the perfect time? You won't exactly know. But you can more or less gauge their reactions. The good thing about being their family or friend is that you know what makes them tick.

## **LET THEM KNOW YOUR REASONS.**

When you finally open up to family and friends, it helps if you lead with the reasons why. You have your own reasons, of course, but generally, you want to come out because (1) you need to be your most authentic self, (2) you want to be open and honest with them (3) you love and respect them enough and wouldn't want to hide an important part of yourself.

## **DO YOUR HOMEWORK.**

You probably already do, but you have to make sure you know witchcraft inside and out. Your family and friends will surely want to know what witchcraft is and why you chose to take this path. Acceptance comes from understanding, so they must see witchcraft the way you do.

## **SOMETIMES, IT'S HOW YOU SAY IT THAT COUNTS.**

No matter how well-versed you are in everything witchcraft, your words will only come off as gibberish if you're speaking from a place of anger.

Try to keep your cool and keep your voice soft, even if your loved ones are hitting the high



## **WHAT HAPPENS WHEN THEY REACT NEGATIVELY?**

Don't expect them to understand or accept your chosen path right away. If they are on the conservative side, the best that you'll probably receive from them is tolerance or a lack of hostility. If this is the case, then it's okay. It's not the best scenario, but at least you've been open about yourself.

Then again, there are rare cases where your loved ones will take the news gladly. They will be happy to know that you trust them enough to share this big part of yourself with them. They would even thank you for this brave move!

Every witch is different, and so are our family members and friends. There's no one-size-fits-all piece of advice. So in the end, it's really you who will make the next steps towards becoming your most authentic Wiccan self!

notes at screaming. Their rage stems from confusion and lack of understanding, so the best thing to do is wait for them to calm down. Because sometimes, it's not entirely what you say. It's how you say it.

## **LET YOUR SINCERITY DO THE TALKING.**

Show you're sincere. This tip applies to the before, during, and after in your coming-out timeline. When the people close to you see that you're becoming a better person because of witchcraft, then they will gradually appreciate your beliefs. Remember, actions speak louder than words.





***YOUR SOURCE  
FOR  
HIGH QUALITY  
WICCA AND PAGAN  
PRODUCTS***



I love my Goddess morning coffee and night time tea mug. Shipping time was very fast. 💙💙🌙🌙  
Thank the Goddesses I found your store. Much love Blessed Be!

— Sheryl C.



I love everything from moonlight shop. I have so much stuff and appreciate all the help I got from James. I will be back to buy more.

— Debi C.



Still Love The Moonlight Shop, this was my 2nd order and I have already placed a third one. Products are quality shipping is fast and customer service is superb.

— Johnnie M K.



# FREE PENTACLE

## OF THE BLACK ONYX

1.

**RECORD A SHORT VIDEO REVIEW OF THE MAGAZINE**

(BE SURE TO SHOW THE MAGAZINE ON YOUR TABLET, COMPUTER, IN KINDLE OR PRINT)

2.

**POST IT ON YOUTUBE AND SEND THE LINK TO:  
INFO@THEMOONLIGHTSHOP.COM**

*(INCLUDE THE LINK: [HTTP://THEMOONLIGHTPOST.COM](http://themoonlightpost.com) IN THE VIDEO DESCRIPTION)*

3.

**GET YOUR NEW PENTACLE OF THE BLACK ONYX NECKLACE 100% FREE OF CHARGE.**

**ENJOY!**



THE MOONLIGHTSHOP

**BEST SELLER**

**WIN  
A FREE PENTACLE**



The  
Moonlight Post

BROUGHT TO YOU BY THE MOONLIGHT SHOP