

KT TAPE®

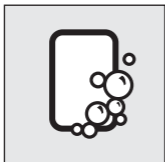
KT PERFORMANCE+®

BLISTER TREATMENT PATCH



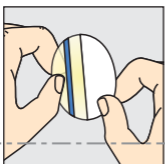
LEARN MORE & SEE INSTRUCTIONAL VIDEOS AT:
kttape.com/instructions/blisterpatch

1 APPLYING PATCH



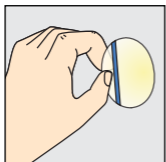
CLEAN SKIN

Clean and dry the affected area before applying patch.



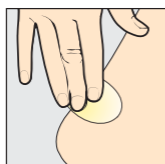
REMOVE WRAPPER & PEEL PAPER

Remove patch from plastic pouch. Do not handle adhesive side of patch. Grasp bandage by clear film with blue stripe and tear to expose half of the bandage.



DON'T TOUCH ADHESIVE!

Remove bandage from the other half of clear film with blue stripe and place bandage over the affected area.

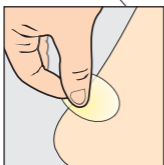


APPLY PATCH

Once placed, remove white paper liner completely. Smooth dressing into place by gently placing the palm of your hand over the patch.

2 PATCH REMOVAL

Product is designed to stay on for up to 7 days and fall off on its own. If leakage around the treatment patch should occur, apply new patches as needed.



TO REMOVE (DO NOT RIP OFF)

To remove patch, carefully loosen edge and gently pull strip sideways to release seal. Avoid pulling upwards.

WARNING: For external use only. Do not use this product if you have poor circulation, fragile skin, or are diabetic. Do not use if you are allergic to any component of this product. Do not apply to any infected areas. Product should only be used on blisters and minor wounds. If blister or wound persists, see your physician. Only use each patch one time. Discontinue use if skin becomes irritated. Sterile unless wrapper is opened or damaged. If wrappers are opened or damaged, do not use the product. This product is not made with natural rubber latex. **READ ALL WARNINGS AND INSTRUCTIONS PRIOR TO USE.** ©2017 KT Health, LLC, American Fork, UT 84003. All rights reserved.

PRODUCT CLAIM DETAILS:

*Hydrocolloids have been shown to heal minor cuts, scrapes, abrasions, lacerations, blisters and scalds up to 2x faster than a simple dry bandage. Journal of Athletic Training 2007;42(3):422-424

†Moist wound environment facilitates the healing process. Eases pain by cushioning and protecting the wound from friction and rubbing.

NOTE: Store away from sunlight in a dry, cool environment between 20°C to 25°C (68°F to 77°F).

Questions? Email us at

support@kttape.com

LEARN ABOUT OUR PRODUCTS AT www.kttape.com

ORIGINAL

Cotton Tape - Lasts 1-3 Days



PRO*

Synthetic Tape - Lasts 4-7 Days



PRO EXTREME*

Extra Strength Adhesive - Lasts 4-7 Days



GENTLE TAPE

Easier Removal



RECOVERY PATCH*



*Not clinically proven for all injuries

KT RECOVERY+*

ICE/HEAT Wrap System

