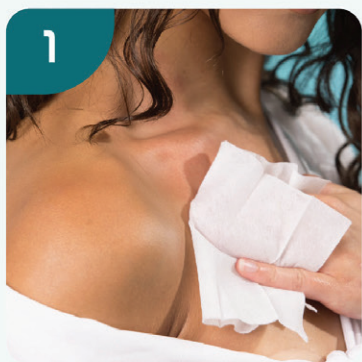


HOW TO APPLY



Clean and Dry Skin

Use the Skin Prep Wipes to ensure proper adhesion.



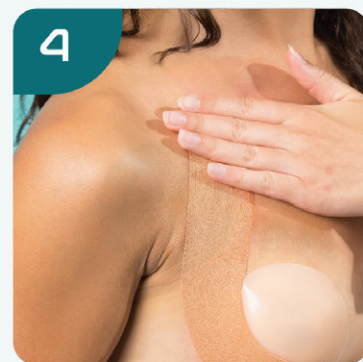
Apply Nipple Covers

Remove backing from cover and press onto nipple.



Measure Tape

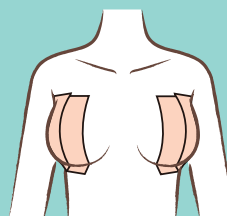
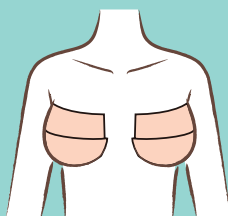
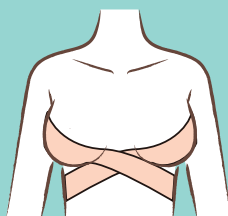
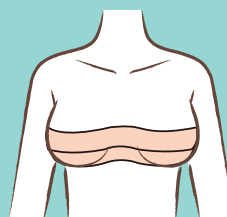
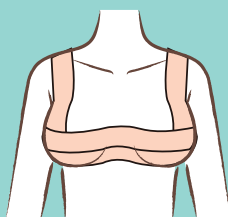
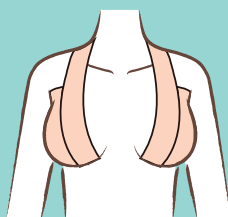
Position breast and measure tape needed for coverage.



Apply Tape

Smoothly apply tape. Avoid repositioning or reapplication.

APPLICATION SUGGESTIONS



HOW TO REMOVE



Apply Oil

Apply Tape Removal Oil, or any mineral oil, generously to the tape.



Soak

Allow oil to completely soak into the tape for at least 5 minutes.



Peel Tape

Start from an edge and slowly peel. Stop if you feel discomfort.



Rinse

Rinse off any remaining residue with soap and water.