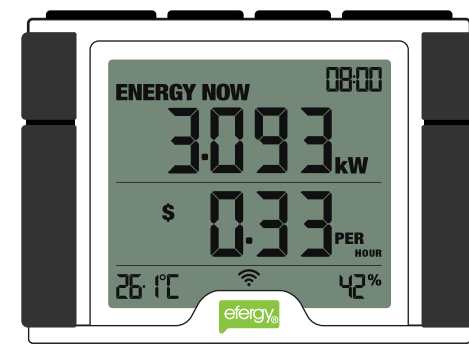


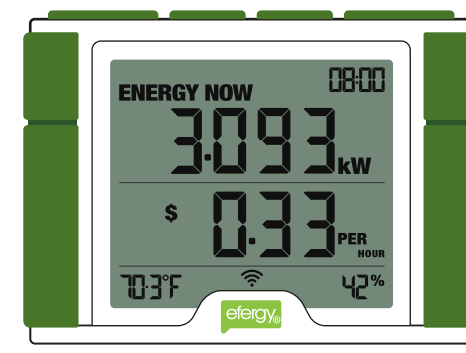
Efergy Energy Monitors

Product Comparison



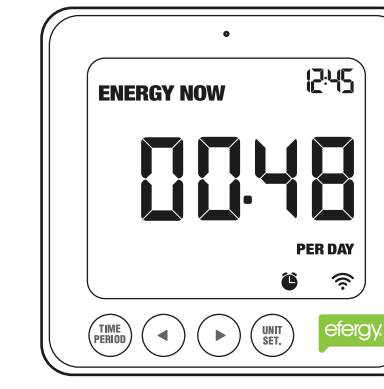
Elite Classic

View your home energy information in real-time



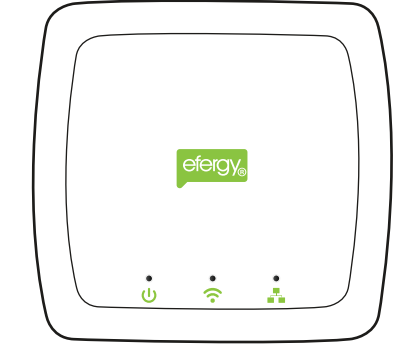
True Power Meter

Displays in kilowatts based on true power consumption reaching 99% accuracy



E2 Classic

View energy in real-time, export your data, analyse it and save money



Engage Hub Kit

Real-time energy monitoring on an app and web portal

DEVICE HARDWARE				
Portable display	✓	✓	✓	Yes, on mobile apps
Dimensions	78x117x32mm	78x117x32mm	86x86x25mm	80x85x25mm
Device Weight	170g	170g	115g	61g
USB port	✗	✗	✓	✗
Ethernet port	✗	✗	✗	LAN/Ethernet
Device power	3 x AA alkaline batteries	3 x AA alkaline batteries or 5DCV AC/DC Adapter	3 x AAA alkaline batteries	AC/DC adaptor
Device battery life	12-18 months	12-18 months	12-18 months	AC/DC powered
FEATURES & SPECS				
Accuracy	Up to 98%	Up to 99%	Up to 98%	Up to 98%
Energy management software	✗	✗	ELink Energy Management Software for Windows	Engage Online Energy Monitoring Web/Android/iOS
Key Measurements	Energy Now (kW, Cost, CO2), History (cost, CO2 and kWh)	Energy Now (kW, Cost, CO2), History (cost, CO2 and kWh)	Energy Now (kW, Cost, CO2), History (cost, CO2 and kWh)	Real time usage, cost, energy demand, historical usage
Data resolution	Per Day, Week and Month	Per Day, Week and Month	Per Minute, Hour, Day, Week and Month	Per Day, Week, Month and Year
Tariff	Up to 4 tariff periods setup	Up to 4 tariff periods setup	Up to 4 tariff periods setup	Single tariff
Individual circuit monitoring	✗	✗	✗	Yes, up to 5 power circuits (with Submetering Kits STXtra)
Online web and mobile monitoring	Requires the engage hub solo	Requires the engage hub solo	Requires the engage hub solo	Online portal, Android/iOS application
Currencies displayed	€, \$, £, R, Kr, ₹	€, \$, £, R, Kr, ₹	€, \$, £, R, Kr, ₹	€, \$, £, R, Kr, ₹ and more
DIY Installation	✓	Should be installed by an electrician	✓	✓
Energy Now, History and Average	✓	✓	✓	✓
CO2 emissions	✓	✓	✓	✓
Date and time	✓	✓	✓	✓
Temperature	✓	✓	✗	✓
Humidity	✓	✓	✗	✗
Type of information displayed	Alphanumeric	Alphanumeric	Alphanumeric	Alphanumeric & Graphic
Data download	✗	✗	✓	Yes - monthly data in CSV files
Memory Storage capacity	64kb (up to 12 months)	64kb (up to 12 months)	256kb (up to 24 months)	Unlimited
Measurement range	50mA-120A/phase	50mA-120A/phase	50mA-120A/phase	50mA-120A/phase
Voltage range	110V - 300V AC	110V - 300V AC	110V - 300V AC	110V - 300V AC
Audio alert indication of power excess	✓	✓	✓	✗
Three-phase compatible	Yes, with extra sensors	✗	Yes, with extra sensors	Yes, with extra sensors
TRANSMITTER				
Transmitter Dimensions	64x95x28mm	64x95x28mm	64x95x28mm	64x95x28mm
Weight	95g	95g	95g	95g
Transmitter power	3 x AA alkaline batteries	DC/DC	3 x AA alkaline batteries	3 x AA alkaline batteries
Transmitter battery life	18 months	DC/DC powered	18 months	18 months
Transmission range	Up to 70m in open area	Up to 70m in open area	Up to 70m in open area	Up to 70m in open area
Transmission Frequency	433.5MHz	433.5MHz	433.5MHz	433.5MHz
DC adapter input	✗	✓	✗	✗
SENSOR				
XL sensor dimensions	38x51x38mm	38x51x38mm	38x51x38mm	38x51x38mm
XL sensor internal diameter	19mm	19mm	19mm	19mm
XL sensor measuring current	50mA-120A/phase	50mA-120A/phase	50mA-120A/phase	50mA-120A/phase
Sensor voltage range	CATII Max. 600V	CATII Max. 600V	CATII Max. 600V	CATII Max. 600V