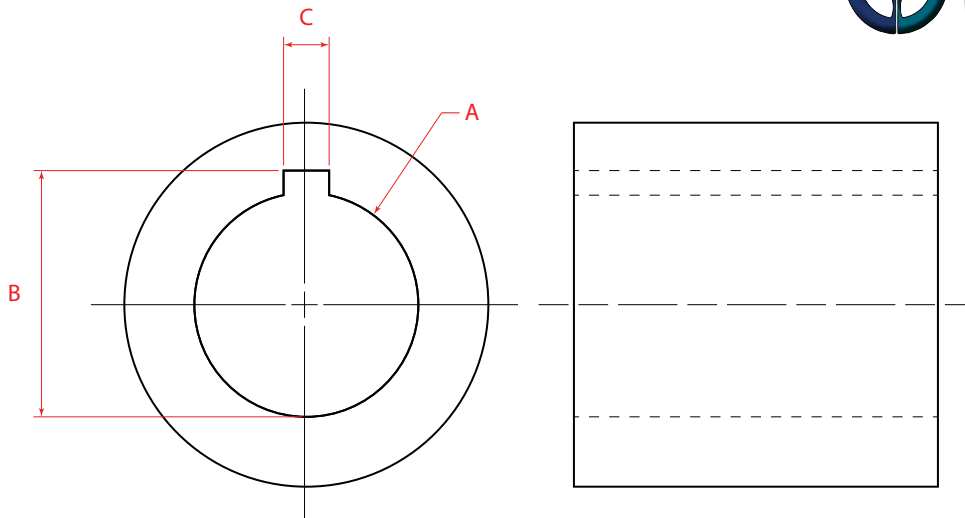


# Standard Keyway Dimensions



**UNLESS OTHERWISE SPECIFIED**  
 ALL DIMENSIONS IN INCHES  
 ALL DIAMETERS CONCENTRIC WITHIN 0.003  
 ALL BURRS & SHARP EDGES REMOVED  
 125 SURFACE FINISH  
 NOT TO SCALE

A	B $\begin{matrix} +.010 \\ -.000 \end{matrix}$	C $\begin{matrix} +.002 \\ -.000 \end{matrix}$	
NOMINAL BORE DIAMETER	BOTTOM OF BORE TO TOP OF KEYWAY	WIDTH	SET SCREW SIZE
0.3750	0.416	0.094	10-24
0.4375	0.480	0.094	
0.5000	0.555	0.125	
0.5625	0.618	0.125	
0.6250	0.705	0.188	1/4-20
0.6875	0.769	0.188	
0.7500	0.832	0.188	
0.8125	0.896	0.188	
0.8750	0.959	0.188	5/16-18
0.9375	1.046	0.250	
1.0000	1.109	0.250	
1.0625	1.173	0.250	
1.1250	1.236	0.250	
1.1875	1.299	0.250	
1.2500	1.362	0.250	

A	B $\begin{matrix} +.010 \\ -.000 \end{matrix}$	C $\begin{matrix} +.002 \\ -.000 \end{matrix}$	
NOMINAL BORE DIAMETER	BOTTOM OF BORE TO TOP OF KEYWAY	WIDTH	SET SCREW SIZE
1.3125	1.449	0.313	3/8-16
1.3750	1.514	0.313	
1.4375	1.599	0.375	
1.5000	1.664	0.375	
1.5625	1.726	0.375	
1.6250	1.791	0.375	
1.6875	1.853	0.375	
1.7500	1.917	0.375	1/2-13
1.8125	2.026	0.500	
1.8750	2.091	0.500	
1.9375	2.154	0.500	
2.0000	2.218	0.500	
2.0625	2.281	0.500	
2.1250	2.345	0.500	
2.1875	2.408	0.500	
2.2500	2.472	0.500	
2.3125	2.581	0.625	
2.3750	2.646	0.625	
2.4375	2.708	0.625	
2.5000	2.773	0.625	

**Yumac Products LLC.**  
 1303 43rd Street  
 Kenosha, WI 53140  
 Phone: (262)-634-7711  
 Fax: (262)-634-6820  
<https://yumacinc.com>  
[sales@YumacInc.com](mailto:sales@YumacInc.com)