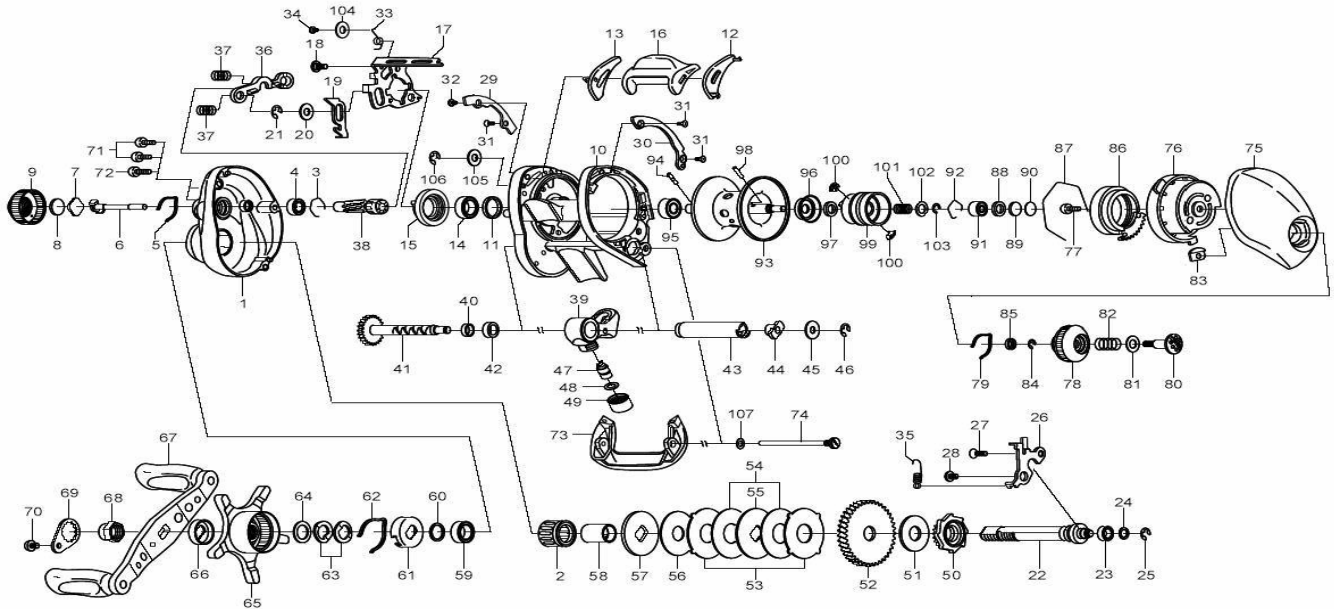


Please order by parts number, not key number
 Veuillez indiquer le numéro de la pièce.

Daiwa
 COMMITTED TO TOTAL QUALITY
 BAITCASTING REEL

TEAM DAIWA ZILLION 100SHSLA



Key No.	Parts No.	Parts Name	Key No.	Parts No.	Parts Name
1	H20-7301	Left side plate	50	G80-2201	Clutch wheel
2	G81-9801	Roller clutch	51	G86-3501	Drive shaft washer
3	B42-1601	Bearing retainer (A)	52	H20-7601	Drive gear
4	G53-8001	Ball bearing (A)	53	G79-1301	Eared washer
5	G89-4401	Click leaf spring (A)	54	G79-1402	Drag washer (A)
6	F74-4101	Pinion shaft	55	F90-4902	Key washer (A)
7	B17-5401	Spacer (A)	56	H11-8401	Drag washer (B)
8	B17-5503	Spacer (B)	57	G35-8501	Key washer (B)
9	F83-3909	Cast control cap	58	G01-1401	Gear shaft collar
10	H20-7401	Frame assembly	59	G43-1001	Ball bearing (E)
11	F83-4701	Collar	60	B55-3801	Bearing washer
12	G26-0702	Spacer (C)	61	F02-8201	Click leaf spring holder
13	G26-0802	Spacer (D)	62	F03-2401	Click leaf spring (B)
14	G43-1002	Ball bearing (B)	63	150-8901	Drag spring washer
15	F99-7401	Clutch cam	64	373-7810	Spacing sleeve
16	G26-0902	Clutch lever	65	H02-6502	Star drag
17	G80-1701	Clutch cam plate	66	F85-0402	Handle collar
18	G00-9701	Clutch cam screw	67	H20-6801	Handle assembly
19	G80-1801	Clutch trip plate	68	G79-3304	Handle nut
20	371-6900	Washer (A)	69	040-3206	Handle nut plate
21	320-1402	Retainer (A)	70	353-8301	Handle nut plate screw
22	G79-0202	Drive shaft	71	G04-0805	Left side plate screw (A)
23	G46-6201	Ball bearing (C)	72	G04-0801	Left side plate screw (B)
24	G75-5200	Washer (B)	73	G26-1504	Front plate
25	320-5901	Retainer (B)	74	G01-1702	Stabilizer bar
26	G80-1901	Drive shaft retainer	75	G26-1615	Right side plate
27	E13-4503	Drive shaft retainer screw (A)	76	G26-1802	Right set plate
28	G85-0401	Drive shaft retainer screw (B)	77	351-0906	Right set plate screw
29	G79-4114	Plate (A)	78	F57-7802	Brake adjusting knob
30	G79-5714	Plate (B)	79	F05-1701	Brake click spring
31	G31-8503	Screw (A)	80	G79-3501	Set plate screw
32	G61-1501	Screw (B)	81	G79-3602	Washer (C)
33	G80-2001	Clutch cam spring	82	E16-7101	Set plate spring
34	F50-5701	Screw (C)	83	F61-3401	Brake dial retainer (A)
35	G79-0501	Clutch trip plate spring	84	B33-9801	Brake dial retainer (B)
36	F99-8201	Yoke	85	F63-7701	Brake dial washer
37	G85-0301	Yoke spring	86	F71-7702	Magnet holder
38	H20-7501	Pinion gear	87	B54-3201	Magnet holder retainer
39	G41-0301	Line guide	88	F57-4303	Spacer (E)
40	G01-0701	Worm shaft holder (A)	89	375-7411	Spacer (F)
41	G79-0701	Worm shaft assembly	90	375-7400	Spacer (G)
42	G46-6201	Ball bearing (D)	91	G43-1101	Ball bearing (F)
43	F83-6502	Level wind guard	92	E21-9701	Bearing retainer (B)
44	B71-5601	Worm shaft holder (B)	93-103	Z01-8939	Spool assembly
45	F65-5500	Worm shaft washer	104	F44-0201	Washer (D)
46	320-5901	Warm shaft retainer	105	G85-0701	Washer (E)
47	121-4212	Line guide pawl	106	320-5901	Retainer (C)
48	373-1300	Line guide washer	107	G68-4801	Washer (F)
49	342-4807	Pawl cap			