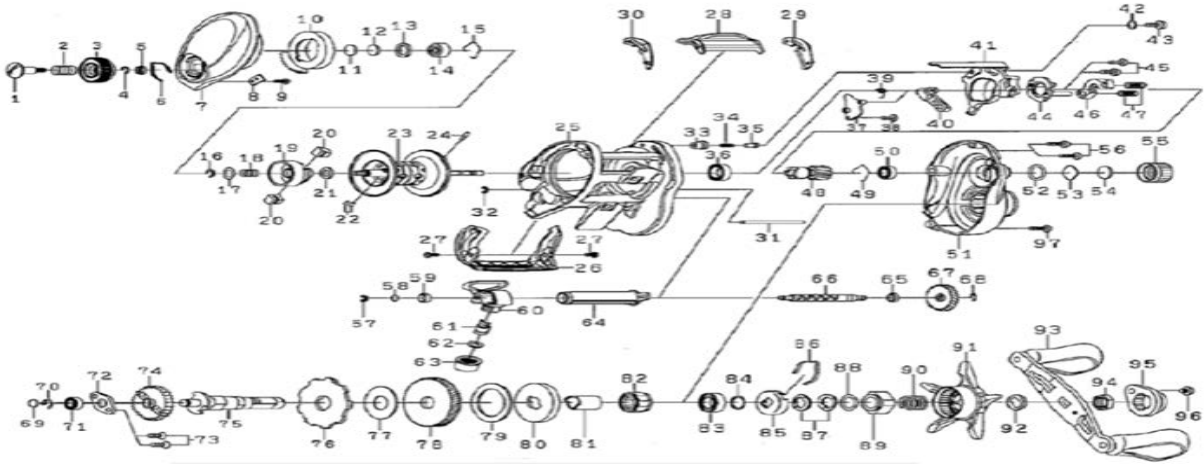


# BAITCASTING REEL

Please order by parts number, not key number  
 Veuillez indiquer le numéro de la pièce (Non "Key" No.)

# TAT150P/H/HS



Key No	Part No	Description
1	J71-6301	BRAKE DIAL SCREW
2	E16-7101	BRAKE DIAL SPRING
3	J21-3701	BRAKE DIAL
4	B33-9801	BRAKE DIAL RETAINER(A)
5	F63-7701	BRAKE DIAL WASHER
6	H66-3401	BRAKE DIAL LEAF SPRING
7	H93-0132	LS PLATE
8	H91-5501	BRAKE DIAL RETAINER(B)
9	G93-9301	BRAKE DIAL RETAINER(B)SCREW
10	H93-0502	MAGNET HOLDER
11	375-7400	LS BALL BEARING WASHER(A)(0.1MM)
12	375-7411	LS BALL BEARING WASHER(B)
13	G18-5101	LS BALL BEARING WASHER(C)
14	G51-1503	LS BALL BEARING
15	F03-2201	LS BALL BEARING RETAINER
16-24	Z02-1272	SPOOL ASSEMBLY ( 16 - 24 )
25	H91-0225	FRAME
26	J21-3603	FRONT COVER
27	H45-5407	FRONT COVER SCREW
28	H91-2401	CLUTCH LEVER
29	H91-5601	CLUTCH LEVER PLATE (R)
30	H91-5701	CLUTCH LEVER PLATE (L)
31	H91-2101	OSCILLATING POST
32	H70-4101	OSCILLATING POST RETAINER
33	H91-0601	CLUTCH CAM PLATE PIN SPRING COLLAR
34	H92-8801	CLUTCH CAM PLATE PIN SPRING
35	J05-5201	CLUTCH CAM PLATE PIN
36	B86-1704	CLUTCH CAM BALL BEARING
37	H91-2301	KICK LEVER PLATE(A)
38	H29-4101	KICK LEVER PLATE (A) SCREW
39	H45-0001	KICK LEVER SPRING
40	J22-1401	KICK LEVER
41	H92-8701	CLUTCH CAM
42	H15-9201	CLUTCH CAM SCREW WASHER
43	352-2501	CLUTCH CAM SCREW
44	H65-9101	KICK LEVER PLATE (B)
45	B03-2904	KICK LEVER PLATE (B) SCREW
46	H92-9001	CLUTCH PLATE
47	J05-5301	CLUTCH SPRING
48	J09-1101	PINION GEAR
49	E21-9701	PINON RETAINER
50	G43-1102	PINION BALL BEARING
51	H91-0336	RS PLATE
52	171-5201	MECHANICAL BRAKE O-RING
53	B17-5406	MECHANICAL BRAKE WASHER (A)(t=0.5)
54	B17-5503	MECHANICAL BRAKE WASHER (B)
55	J00-4707	MECHANICAL BRAKE KNOB
56	G04-0820	RS PLATE SCREW (A)
57	320-5901	WORM SHAFT RETAINER(A)
58	B41-1702	WORM SHAFT WASHER(0.1MM)
59	G72-0001	WORM SHAFT COLLAR

Key No	Part No	Description
60	J17-6601	LEVEL WIND
61	121-4212	PAWL
62	373-1300	PAWL WASHER(0.1MM)
63	F40-2801	PAWL HOLDER NUT
64	H91-0801	WORM SHIELD
65	G72-0001	WORM SHAFT
66	H91-1701	WORM SHAFT COLLAR
67	H91-0501	WORM SHAFT GEAR
68	B33-9801	WORM SHAFT RETAINER(B)
69	G09-9800	GEAR SHAFT WASHER(0.1MM)
70	320-8002	GEAR SHAFT RETAINER
71	B35-8605	GEAR SHAFT BALL BEARING
72	H92-8901	GEAR SHAFT PLATE
73	E13-4509	GEAR SHAFT PLATE SCREW
74	H91-2701	WORM GEAR
75	H91-1601	GEAR SHAFT
76	H92-9401	RATCHET
77	J08-5101	DRIVE GEAR WASHER
78	J07-5802	DRIVE GEAR
79	H45-2602	DRAG WASHER ( t=1.0 )
80	H91-3201	DRAG DISC WASHER
81	J37-7801	DRAG COLLAR
82	G81-9801	ONEWAY CLUTCH
83	B86-1704	CLUTCH CAM BALL BEARING
84	B55-3801	HANDLE BALL BEARING WASHER
85	F02-8203	DRAG HOLDER
86	F03-2401	DRAG HOLDER LEAF SPRING
87	150-8901	DRAG SPRING WASHER
88	H92-9501	STAR DRAG WASHER ( t=1.0 )
89	H91-2001	DRAG NUT
90	J01-1901	DRAG NUT SPRING
91	H91-1901	STAR DRAG
92	F57-6601	HANDLE WAHSER
93	J09-1201	HANDLE ASSEMBLY
94	H72-3701	HANDLE NUT
95	J21-3502	HANDLE LOCK PLATE
96	G04-0803	HANDLE LOCK PLATE SC
97	G04-0829	LS PLATE SCREW (B)
48+78	Z02-1871	PINION + DRIVE GEAR UNIT

### SPECIAL PARTS FOR TAT150HS

Key No	Part No	Description
48	J09-1901	PINION GEAR
51	H91-0337	RS PLATE
78	J07-5402	DRIVE GEAR

### SPECIAL PARTS FOR TAT150P

Key No	Part No	Description
48	J70-9901	PINION GEAR
51	H91-0335	RS PLATE
78	J07-6202	DRIVE GEAR