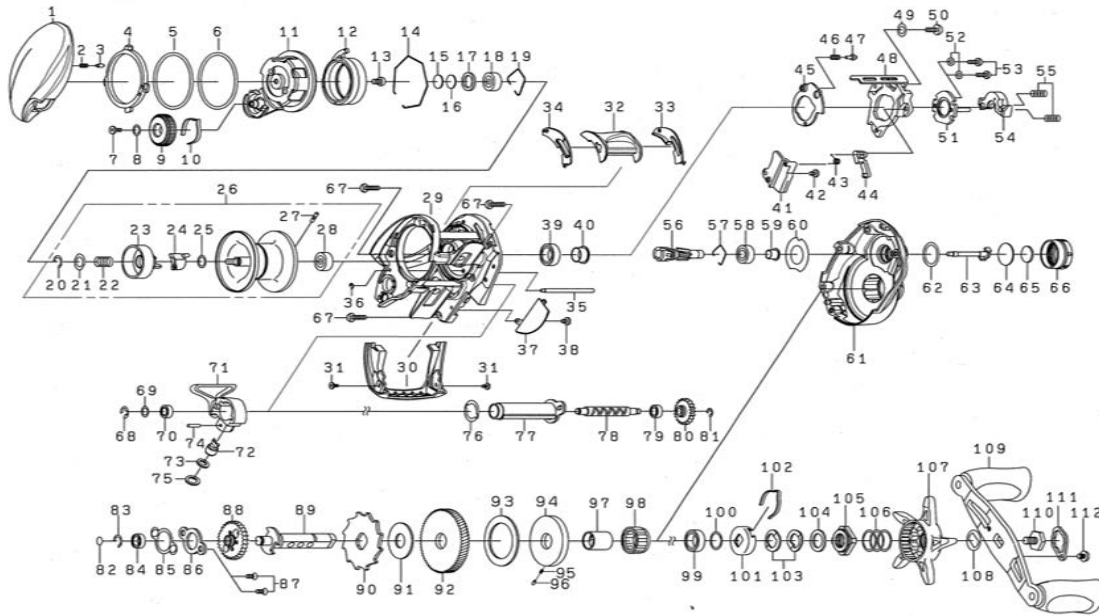


# BAITCASTING REEL

## STZCTSV70H\_XH

\*Please order by parts number, not key number.



Key No	Part No	Description
1	J74-1101	LEFT SIDE PLATE
2	J63-1901	LEVER PLATE SPRING
3	J28-6301	LEVER PLATE PIN
4	J74-1601	LEVER PLATE (A)
5	J74-2601	LEVER PLATE (B)
6	J74-1703	LEVER PLATE (C)
7	G94-0402	BRAKE DIAL SCREW
8	H15-9201	BRAKE DIAL WASHER
9	J74-1801	BRAKE DIAL
10	H66-3401	BRAKE DIAL SPRING
11	J74-1301	SET PLATE
12	J74-1901	MAGNET HOLDER
13	H66-6002	SET PLATE SCREW
14	J74-2201	MAGNET HOLDER RETAINER
15	375-7404	LS SPOOL ADJUST WASHER (A)
16	375-7411	LS SPOOL ADJUST WASHER (B)
17	G18-5101	LS SPOOL ADJUST WASHER (C)
18	G51-1506	LS BALL BEARING
19	F03-2201	LS BALL BEARING RETAINER
26	Z02-6610	SPOOL ASSY
29	J73-8205	FRAME
30	J74-0904	FRONT COVER
31	H53-1507	FRONT COVER SCREW
32	J73-9201	CLUTCH LEVER
33	J73-8401	CLUTCH LEVER PLATE (R)
34	J73-8501	CLUTCH LEVER PLATE (L)
35	J74-1001	STABILIZER BAR
36	H70-4101	STABILIZER BAR RETAINER
37	J73-8601	FRAME PLATE
39	G43-1004	PINION BALL BEARING (A)
40	J76-4501	PINION BALL BEARING (A) COLLAR
41	J73-9101	CLUTCH TRIP LEVER PLATE (A)
43	J91-5201	CLUTCH TRIP LEVER PLATE SPRING
44	J62-2901	CLUTCH TRIP LEVER
45	J73-9001	CLUTCH CAM PLATE (A)
46	H92-8801	CLUTCH CAM PLATE SPRING
47	J05-5201	CLUTCH CAM PLATE PIN
48	J73-8701	CLUTCH CAM
49	H45-0701	CLUTCH CAM WASHER
50	B36-0405	CLUTCH CAM SCREW
51	H65-9103	CLUTCH CAM PLATE (B)
52	G91-3306	CLUTCH CAM PLATE WASHER
53	B03-2905	CLUTCH CAM PLATE SCREW
54	H92-9001	YOKE
55	J31-3901	YOKE SPRING
56 92	Z02-6627	PINION DRIVE GEAR SET
57	H44-8402	PINION BALL BEARING RETAINER
58	G53-8004	PINION BALL BEARING (B)
59	J72-4601	PINION BALL BEARING (B) COLLAR
60	J28-5901	YOKE SPRING PLATE
61	M29-8901	RIGHT SIDE PLATE
62	J27-9701	ZERO ADJUSTER KNOB O RING
63	G93-1001	PINION SHAFT

Key No	Part No	Description
64	H16-1001	ZERO ADJUSTER WASHER (A)
65	B17-5503	ZERO ADJUSTER WASHER (B)
66	J27-9605	ZERO ADJUSTER KNOB
67	G94-5806	RIGHT SIDE PLATE SCREW
68	320-5901	WORM SHAFT RETAINER
69	B41-1702	WORM SHAFT WASHER
70	G46-9002	WORM SHAFT BALL BEARING (A)
71	J73-9504	LEVELWIND
72	J74-0101	PAWL
73	M16-1301	PAWL WASHER
74	J74-0201	LEVELWIND PIN
75	G25-2202	PAWL O RING
76	J28-1601	WORM SHIELD PLATE
77	J74-0001	WORM SHIELD
78	J73-9901	WORM SHAFT
80	J28-1401	WORM GEAR
81	B33-9801	WORM GEAR RETAINER
82	G09-9801	DRIVE SHAFT WASHER
83	320-8002	DRIVE SHAFT RETAINER
84	G46-6202	DRIVE SHAFT BALL BEARING
85	J28-1201	DRIVE SHAFT PLATE (A)
86	J28-1101	DRIVE SHAFT PLATE (B)
87	G29-7006	DRIVE SHAFT PLATE SCREW
88	J28-1001	DRIVE SHAFT GEAR
89	J73-9401	DRIVE SHAFT
90	H66-0901	RATCHET
91	374-6605	DRIVE GEAR WASHER
93	H35-9001	DRAG WASHER
94	J74-0501	KEY WASHER
95	J41-0801	DRAG CLICK SPRING
96	J56-6201	DRAG CLICK PIN
97	G01-1401	CLUTCH RING
98	J54-0401	ONEWAY CLUTCH
100	B55-3801	HANDLE BEARING WASHER
101	F02-8203	CLICK SPRING HOLDER
102	F03-2401	CLICK LEAF SPRING
103	150-8901	DRAG SPRING WASHER
104	H92-9501	STAR DRAG WASHER
105	J14-1001	STAR DRAG METAL
106	J01-1901	STAR DRAG SPRING
107	J29-5403	STAR DRAG
108	F57-6601	HANDLE PLATE
109	M29-3501	HANDLE ASSEMBLY
110	J29-5501	HANDLE SCREW
111	J31-9203	HANDLE LOCK PLATE
112	G83-5502	HANDLE LOCK PLATE SCREW
207	J37-4301	REEL FOOT PROTECTOR

### STZCTSV70XH Special Parts

Key No	Part No	Description
56 92	Z02-6628	PINION DRIVE GEAR SET
61	M29-9101	RIGHT SIDE PLATE