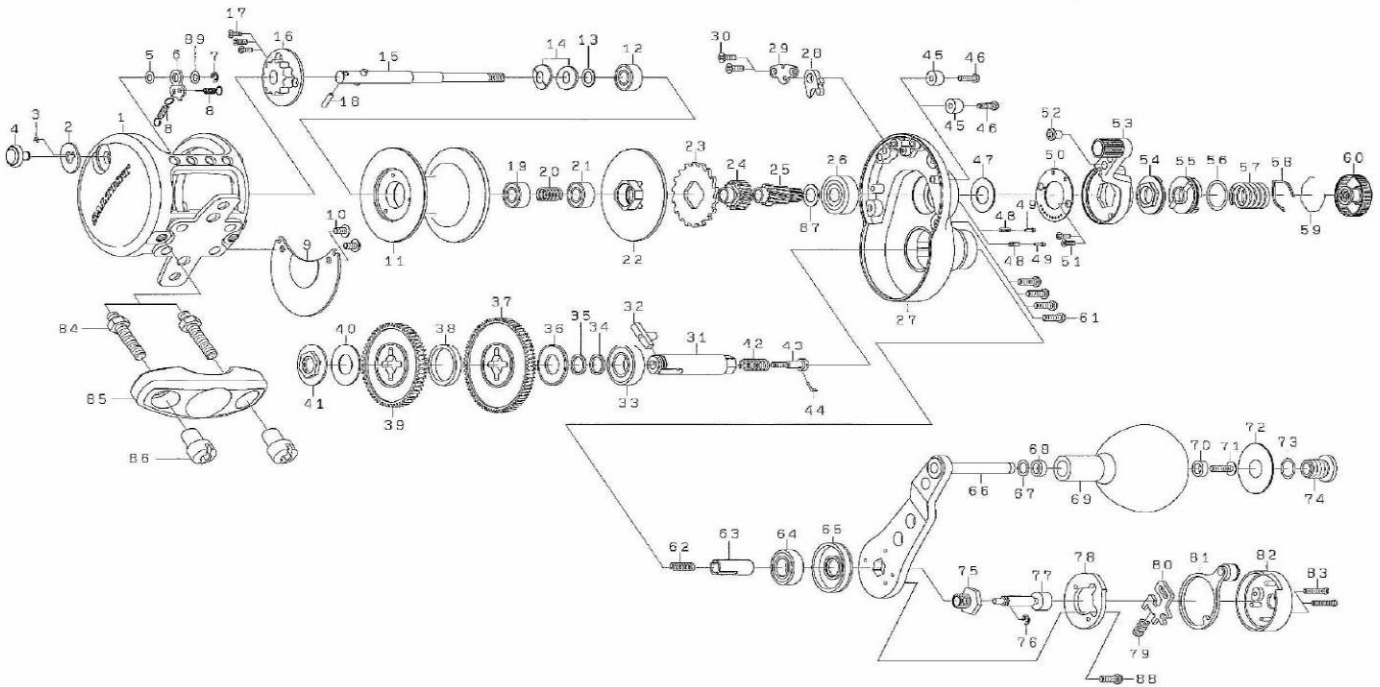




Please order by parts number, not key number
 Veuillez indiquer le numéro de la pièce (Non "Key" No.)

CONVENTIONAL REEL **SALTIST LD35-2speed**



Key No.	Parts No.	Parts Name	Key No.	Parts No.	Parts Name
1	H49-9002	Frame	42	H52-8401	Drive shaft spring (A)
2	H42-0301	Click plate	43	H42-2101	Drive shaft screw
3	H42-0401	Click spring (A)	44	H31-6602	Drive shaft pin (C)
4	H48-5901	Click button	45	H42-3901	Collar (A)
5	F09-4802	Click button washer	46	351-7801	Screw (D)
6	H42-0501	Click pawl	47	H42-3801	Washer (E)
7	320-1402	Click pawl retainer	48	H53-0901	Spring (B)
8	H54-7801	Click spring (B)	49	H53-0801	Pin (A)
9	H42-0701	Frame plate	50	H48-1901	Drag lever plate
10	F50-5703	Screw (A)	51	G31-8503	Screw (E)
11	H49-9201	Spool	52	H42-4501	Pin (B)
12	H42-8701	Ball bearing (A)	53	H42-4001	Drag lever
13	375-8500	Washer (A)	54	H42-4601	Pre-set cam (A)
14	H51-3101	Drag spring washer	55	H42-4701	Pre-set cam (B)
15	H49-9401	Main shaft	56	171-1001	'O' ring
16	H42-1601	Drag click cap	57	H48-4801	Drag knob spring
17	G29-7001	Screw (B)	58	F03-2401	Click leaf spring
18	G32-2701	Drive shaft pin (A)	59	170-7701	Ring
19	G53-6001	Ball bearing (B)	60	H42-4801	Pre-set drag knob
20	H51-2501	Spring (A)	61	G47-3704	Screw (F)
21	G62-6301	Ball bearing (C)	62	H49-2801	Drive shaft spring (B)
22	H52-0101	Drag plate	63	H42-2201	Collar (B)
23	H42-3401	Drag ratchet	64	G52-2801	Ball bearing (F)
24	H48-2001	Pinion gear (A)	65	H42-5101	Collar (C)
25	H42-2801	Pinion gear (B)	66-74	H42-5201	Handle assembly
26	E17-5802	Ball bearing (D)	75	H42-5901	Handle nut
27	H42-1716	Right side plate	76	320-5901	Retainer
28	E48-9001	Stopper	77	H42-6001	Handle button
29	H42-3501	Stopper retainer	78	H42-6101	Handle cap (A)
30	G31-8503	Screw (C)	79	H42-6201	Spring (C)
31	H42-1801	Drive shaft	80	H42-6301	Plate
32	H42-1901	Drive shaft pin (B)	81	H42-6401	Handle lever
33	F64-1602	Ball bearing (E)	82	H42-6701	Handle cap (B)
34	G20-5503	Washer (C)	83	G04-0809	Handle screw
35	G20-5500	Washer (D)	84	H45-8302	Clamp bolt
36	H42-2301	Drive gear collar (A)	85	G38-7901	Rod clamp
37	H42-2401	Drive gear (A)	86	F18-7702	Clamp nut
38	H42-2501	Drive gear collar (B)	87	375-8500	Washer (F)
39	H42-2601	Drive gear (B)	88	350-8912	Screw (G)
40	H42-2301	Drive gear collar (C)	89	373-1600	Washer (G)
41	H42-2701	Drive shaft nut			