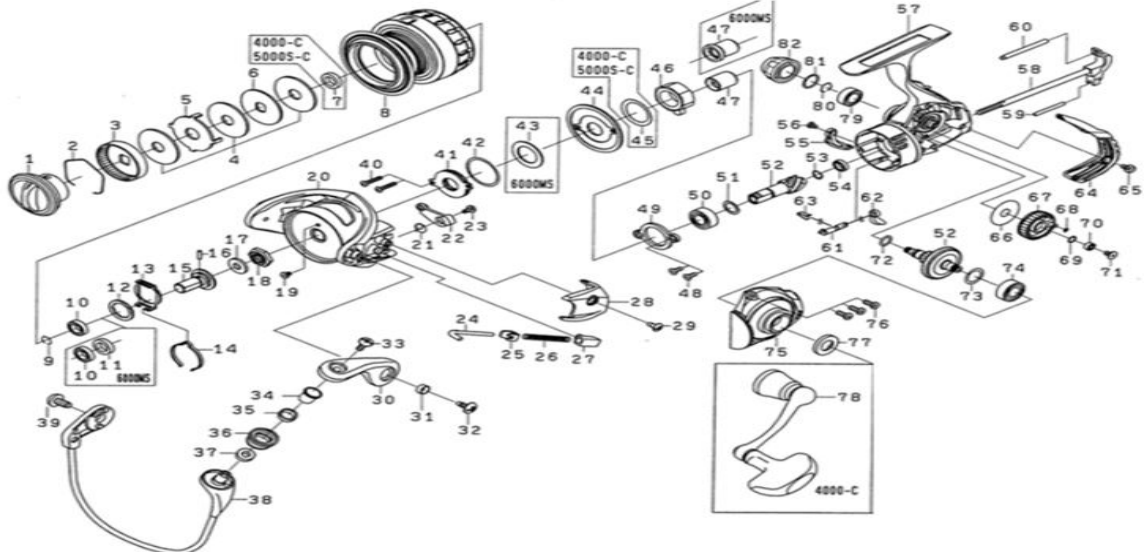


SPINNING REEL

STTB4000LT

*Please order by parts number, not key number.



| Key No | Part No | Description |
|--------|----------|------------------------------|
| 1 | J29-0601 | DRAG KNOB |
| 2 | F71-0001 | DRAG RING |
| 3 | F89-5301 | DRAG RACHET |
| 4 | J56-1901 | DRAG WASHER |
| 5 | F62-7301 | DRAG LIP WASHER |
| 6 | F62-7201 | DRAG DISC WASHER |
| 7 | H62-4801 | DRAG COLLAR |
| 2~8 | J78-2701 | SPOOL ASSEMBLY |
| 9 | G47-2401 | SPOOL METAL RING |
| 10 | E30-6801 | SPOOL METAL BALL BEARING |
| 11 | N/A | SPOOL METAL COLLAR |
| 12 | H80-6301 | SPOOL WASHER |
| 13 | H41-6001 | CLICK HOLDER |
| 14 | H88-3701 | CLICK LEAF SPRING |
| 15 | H61-5003 | SPOOL METAL |
| 16 | G37-5001 | SPOOL METAL PIN |
| 17 | H98-6901 | ROTOR NUT PACKING |
| 18 | H96-1101 | ROTOR NUT |
| 19 | H02-2701 | ROTOR NUT SCREW |
| 20 | J56-7508 | ROTOR |
| 21 | H41-3601 | KICK LEVER SPRING |
| 22 | J56-7601 | KICK LEVER |
| 23 | H41-7701 | KICK LEVE SCREW |
| 24 | H57-2001 | ARM LEVER SHAFT |
| 25 | H57-6101 | ARM LEVER SHAFT PLATE |
| 26 | H41-4201 | ARM LEVER SPRING |
| 27 | J08-9401 | ARM LEVER SPRING HOLDER |
| 28 | J56-7801 | ARM LEVER SPRING COVER |
| 29 | G27-0801 | ARM LEVER SPRING COVER SCREW |
| 30 | H72-8912 | ARM LEVER |
| 31 | H96-2401 | ARM LEVER SCREW COLLAR |
| 32 | G20-5001 | ARM LEVER SCREW |
| 33 | G19-5602 | ROLLER SCREW |
| 34 | G19-5501 | LINE ROLLAR COLLAR(A) |
| 35 | G22-0701 | LINE ROLLAR COLLAR(B) |
| 36 | J08-9902 | LINE ROLLAR |
| 37 | G87-4201 | LINE ROLLAR COLLAR(C) |
| 38 | J78-2301 | BAIL ASSEMBLY |
| 39 | G20-5001 | BAIL HOLDER SCREW |
| 40 | J00-1601 | MAGSHIELD SCREW |
| 41 | J68-8201 | MAGSHIELD ASSEMBLY |

| Key No | Part No | Description |
|--------|----------|--------------------------------------|
| 42 | J35-4801 | MAGSHIELD ORING |
| 43 | N/A | MAGSHIELD WASHER |
| 44 | J56-0901 | MAGSHIELD CAP |
| 45 | J63-9900 | ONEWAY CLUCH WASHER |
| 46 | J38-8401 | ONEWAY CLUCH |
| 47 | J00-1403 | CLUCH RING |
| 48 | J00-0901 | PINION BALL BEARING PLATE SCREW |
| 49 | H41-1501 | PINION BALL BEARING PLATE |
| 50 | G53-5104 | PINION BALL BEARING(A) |
| 51 | 375-8502 | PINION BALL BEARING WASHER |
| 52 | Z02-4106 | PINON+DRIVE GEAR SET |
| 53 | H93-1701 | PINION BALL BEARING(B) SPRING WASHER |
| 54 | G46-6202 | PINION BALL BEARING(B) |
| 55 | J00-1101 | BAIL KICK COLAR |
| 56 | G94-0402 | BAIL KICK COLAR SCREW |
| 57 | J46-1902 | BODY |
| 58 | J14-0801 | MAIN SHAFT |
| 59 | J08-4802 | OSCILLATING POST(A) |
| 60 | H61-4301 | OSCILLATING POST(B) |
| 61 | H59-5501 | STOPPER CAM |
| 62 | H59-5401 | STOPPER LEVER |
| 63 | H69-7801 | STOPPER LEAF SPRING |
| 64 | J36-3701 | REAR CAP |
| 65 | J00-1801 | REAR CAP SCREW |
| 66 | H59-5701 | OSCILLATING GEAR WASHER |
| 67 | H61-3901 | OSCILLATING GEAR |
| 68 | G46-6001 | OSCILLATING GEAR ORING |
| 69 | H12-9201 | OSCILLATING GEAR BALL BEARING WASHER |
| 70 | G46-9005 | OSCILLATING GEAR BALL BEARING |
| 71 | G94-0402 | OSCILLATING GEAR SCREW |
| 72 | G67-0501 | DRIVE GEAR ORING |
| 73 | 375-8502 | DRIVE BALL BEARING WASHER |
| 74 | G46-7302 | DRIVE BALL BEARING(A) |
| 75 | J41-9302 | BODY COVER |
| 76 | G33-2906 | BODY COVER SCREW |
| 77 | J13-0201 | HANDLE PACKING |
| 78 | J46-1501 | HANDLE ASSEMBLY |
| 79 | G52-2706 | DRIVE BALL BEARING(B) |
| 80 | G47-2401 | DRIVE BALL BEARING PACKING |
| 81 | G16-2401 | HANDLE CAP ORING |
| 82 | J41-8101 | HANDLE CAP |