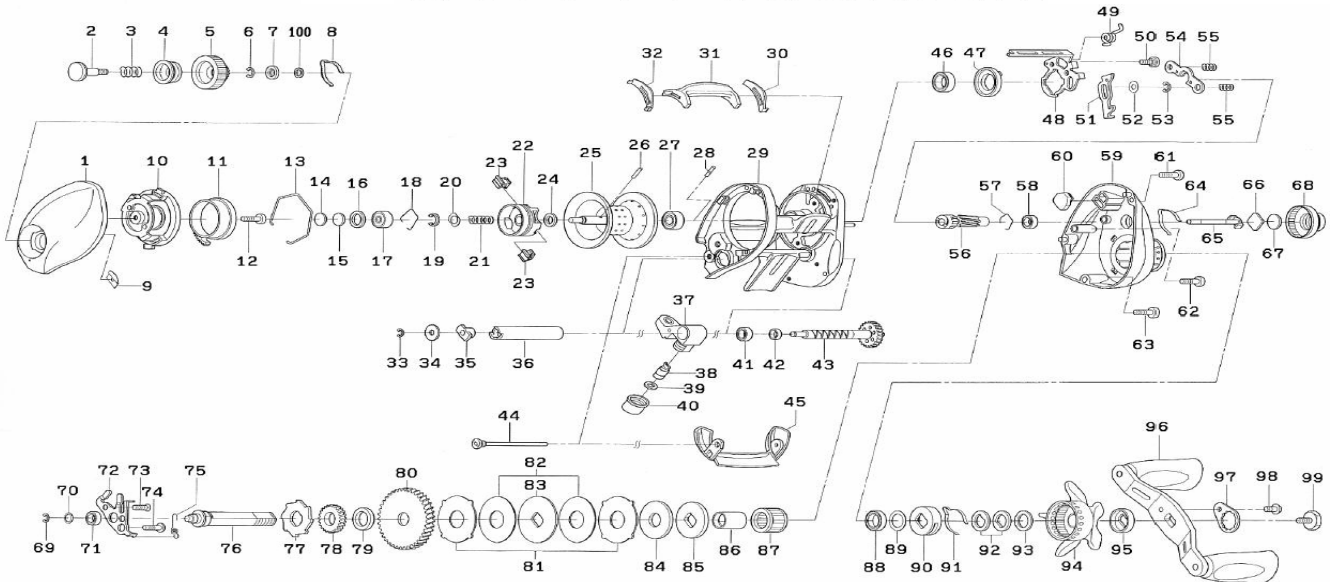


Please order by parts number, not key number  
Veuillez indiquer le numéro de la pièce.



# STEEZ 103SHA



Key No.	Parts No.	Parts Name	Key No.	Parts No.	Parts Name
1	G75-7301	Left side plate	56	H14-7301	Pinion gear
2	F57-7901	Set plate screw	57	E21-9701	Bearing retainer (B)
3	E16-7101	Set plate spring	58	G46-6202	Ball bearing (D)
4	F77-0705	Brake dial washer (A)	59	H15-3601	Right side plate
5	G75-7401	Brake adjusting knob	60	G26-2301	Clutch cam plate (B)
6	B33-9801	Brake dial retainer (A)	61	G04-0814	Right side plate screw (A)
7	F63-7701	Brake dial washer (B)	62	G04-0815	Right side plate screw (B)
8	F05-1701	Brake click spring	63	G04-0801	Right side plate screw (C)
9	F61-3401	Brake dial retainer (B)	64	F26-2701	Click leaf spring (A)
10	G75-7002	Left set plate	65	G01-5501	Pinion shaft
11	G75-7702	Magnet holder	66	B17-5401	Spacer (F)
12	351-0906	Left set plate screw	67	B17-5503	Spacer(G)
13	G75-7801	Magnet holder retainer	68	G77-4702	Cast control cap
14	375-7404	Spacer (A)	69	320-5901	Retainer (B)
15	375-7411	Spacer (B)	70	G75-5203	Washer (B)
16	G18-5101	Spacer (C)	71	G46-6202	Ball bearing (E)
17	G51-1503	Ball bearing (A)	72	H14-7201	Drive shaft retainer
18	F03-2201	Bearing retainer (A)	73	E13-4503	Drive shaft retainer screw (A)
19-28	Z01-8818	Spool assembly	74	G87-5801	Drive shaft retainer screw (B)
29	H14-6801	Frame assembly	75	H25-6701	Clutch trip plate spring
30	G75-4301	Spacer (D)	76	G75-5001	Drive shaft
31	G75-4602	Clutch lever	77	G75-6001	Clutch wheel
32	G75-4401	Spacer (E)	78	G75-6101	Drive gear (A)
33	320-5901	Warm shaft retainer	79	G87-8301	Drive shaft washer
34	F65-5501	Worm shaft washer	80	H14-7401	Drive gear (B)
35	B71-5601	Warm shaft holder (A)	81	G79-1302	Eared washer
36	F83-6502	Level wind guard	82	G79-1402	Drag washer (A)
37	G75-5701	Line guide	83	F90-4903	Key washer (A)
38	121-4212	Line guide pawl	84	H03-3001	Drag washer (B)
39	373-1300	Line guide washer	85	B36-0306	Key washer (B)
40	F40-2801	Pawl cap	86	G01-1401	Gear shaft collar
41	G46-6202	Ball bearing (B)	87	G81-9801	Roller clutch
42	G01-0701	Worm shaft holder (B)	88	G75-6301	Ball bearing (F)
43	G85-0901	Worm shaft assembly	89	B55-3801	Bearing washer
44	G35-8703	Stabilizer bar	90	F02-8201	Click leaf spring holder
45	G75-6802	Front plate	91	F03-2401	Click leaf spring (B)
46	G43-1004	Ball bearing (C)	92	150-8901	Drag spring washer
47	G35-7101	Clutch cam	93	373-7810	Spacing sleeve
48	G75-4802	Clutch cam plate (A)	94	G77-5101	Star drag
49	G75-5301	Clutch cam spring	95	F85-0401	Handle collar
50	G00-9701	Clutch cam screw	96	H16-9401	Handle assembly
51	H14-7101	Clutch trip plate	97	G77-9202	Handle nut plate
52	G53-9401	Washer (A)	98	G83-5501	Handle nut plate screw
53	320-5901	Retainer (A)	99	G77-9101	Handle screw
54	G35-7901	Yoke	100	375-4104	Brake dial washer (C)
55	G35-8001	Yoke spring			