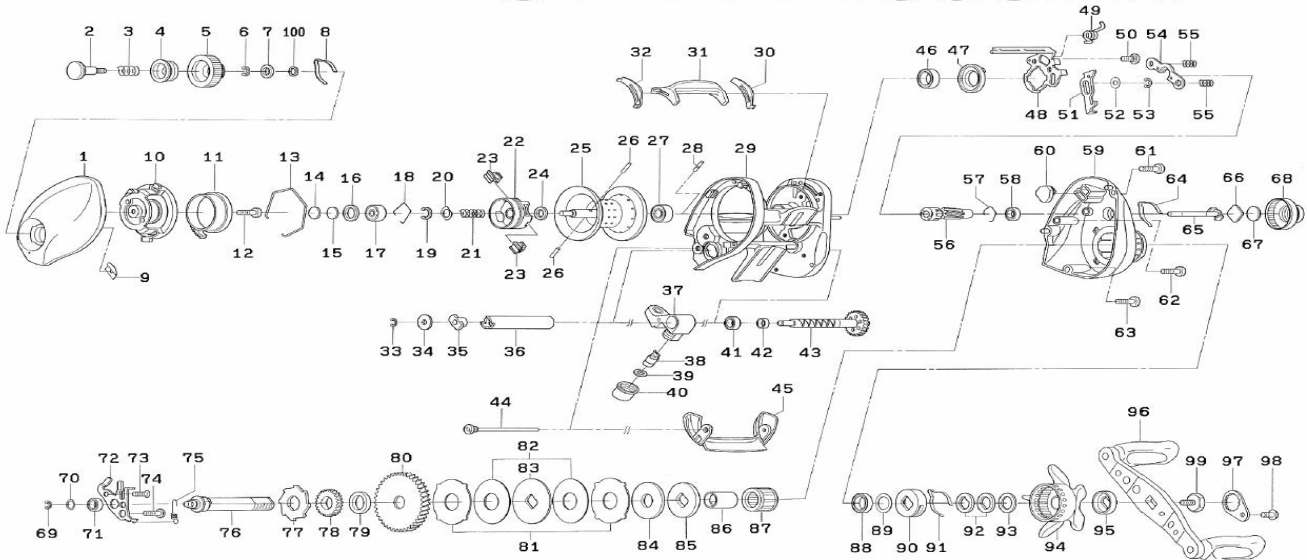


Please order by parts number, not key number
 Veuillez indiquer le numéro de la pièce.



STEEZ 100SHA



| Key No. | Parts No. | Parts Name | Key No. | Parts No. | Parts Name |
|---------|-----------|-------------------------|---------|-----------|--------------------------------|
| 1 | G75-7301 | Left side plate | 56 | H14-7301 | Pinion gear |
| 2 | F57-7901 | Set plate screw | 57 | E21-9701 | Bearing retainer (B) |
| 3 | E16-7101 | Set plate spring | 58 | G46-6202 | Ball bearing (D) |
| 4 | F77-0705 | Brake dial washer (A) | 59 | H14-6601 | Right side plate |
| 5 | G75-7401 | Brake adjusting knob | 60 | G26-2301 | Clutch cam plate (B) |
| 6 | B33-9801 | Brake dial retainer (A) | 61 | G04-0814 | Right side plate screw (A) |
| 7 | F63-7701 | Brake dial washer (B) | 62 | G04-0815 | Right side plate screw (B) |
| 8 | F05-1701 | Brake click spring | 63 | G04-0801 | Right side plate screw (C) |
| 9 | F61-3401 | Brake dial retainer (B) | 64 | F26-2701 | Click leaf spring (A) |
| 10 | G75-7002 | Left set plate | 65 | G01-5501 | Pinion shaft |
| 11 | G75-7702 | Magnet holder | 66 | B17-5401 | Spacer (F) |
| 12 | 351-0906 | Left set plate screw | 67 | B17-5503 | Spacer (G) |
| 13 | G75-7801 | Magnet holder retainer | 68 | G77-4702 | Cast control cap |
| 14 | 375-7404 | Spacer (A) | 69 | 320-5901 | Retainer (B) |
| 15 | 375-7411 | Spacer (B) | 70 | G75-5203 | Washer (B) |
| 16 | G18-5101 | Spacer (C) | 71 | G46-6202 | Ball bearing (E) |
| 17 | G51-1503 | Ball bearing (A) | 72 | H14-7201 | Drive shaft retainer |
| 18 | F03-2201 | Bearing retainer (A) | 73 | E13-4503 | Drive shaft retainer screw (A) |
| 19-28 | Z01-8817 | Spool assembly | 74 | G87-5801 | Drive shaft retainer screw (B) |
| 29 | H14-6801 | Frame assembly | 75 | H25-6701 | Clutch trip plate spring |
| 30 | G75-4301 | Spacer (D) | 76 | G75-5001 | Drive shaft |
| 31 | G75-4602 | Clutch lever | 77 | G75-6001 | Clutch wheel |
| 32 | G75-4401 | Spacer (E) | 78 | G75-6101 | Drive gear (A) |
| 33 | 320-5901 | Worm shaft retainer | 79 | G87-8301 | Drive shaft washer |
| 34 | F65-5501 | Worm shaft washer | 80 | H14-7401 | Drive gear (B) |
| 35 | B71-5601 | Warm shaft holder (A) | 81 | G79-1302 | Eared washer |
| 36 | F83-6502 | Level wind guard | 82 | G79-1402 | Drag washer (A) |
| 37 | G75-5701 | Line guide | 83 | F90-4903 | Key washer (A) |
| 38 | 121-4212 | Line guide pawl | 84 | H03-3001 | Drag washer (B) |
| 39 | 373-1300 | Line guide washer | 85 | B36-0306 | Key washer (B) |
| 40 | F40-2801 | Pawl cap | 86 | G01-1401 | Gear shaft collar |
| 41 | G46-6202 | Ball bearing (B) | 87 | G81-9801 | Roller clutch |
| 42 | G01-0701 | Worm shaft holder (B) | 88 | G75-6301 | Ball bearing (F) |
| 43 | G85-0901 | Worm shaft assembly | 89 | B55-3801 | Bearing washer |
| 44 | G35-8703 | Stabilizer bar | 90 | F02-8201 | Click leaf spring holder |
| 45 | G75-6802 | Front plate | 91 | F03-2401 | Click leaf spring (B) |
| 46 | G43-1004 | Ball bearing (C) | 92 | 150-8901 | Drag spring washer |
| 47 | G35-7101 | Clutch cam | 93 | 373-7810 | Spacing sleeve |
| 48 | G75-4802 | Clutch cam plate (A) | 94 | G77-5101 | Star drag |
| 49 | G75-5301 | Clutch cam spring | 95 | F85-0401 | Handle collar |
| 50 | G00-9701 | Clutch cam screw | 96 | H03-2001 | Handle assembly |
| 51 | H14-7101 | Clutch trip plate | 97 | 040-3206 | Handle nut plate |
| 52 | G53-9401 | Washer (A) | 98 | G83-5501 | Handle nut plate screw |
| 53 | 320-5901 | Retainer (A) | 99 | G77-9101 | Handle screw |
| 54 | G35-7901 | Yoke | 100 | 375-4104 | Brake dial washer (C) |
| 55 | G35-8001 | Yoke spring | | | |