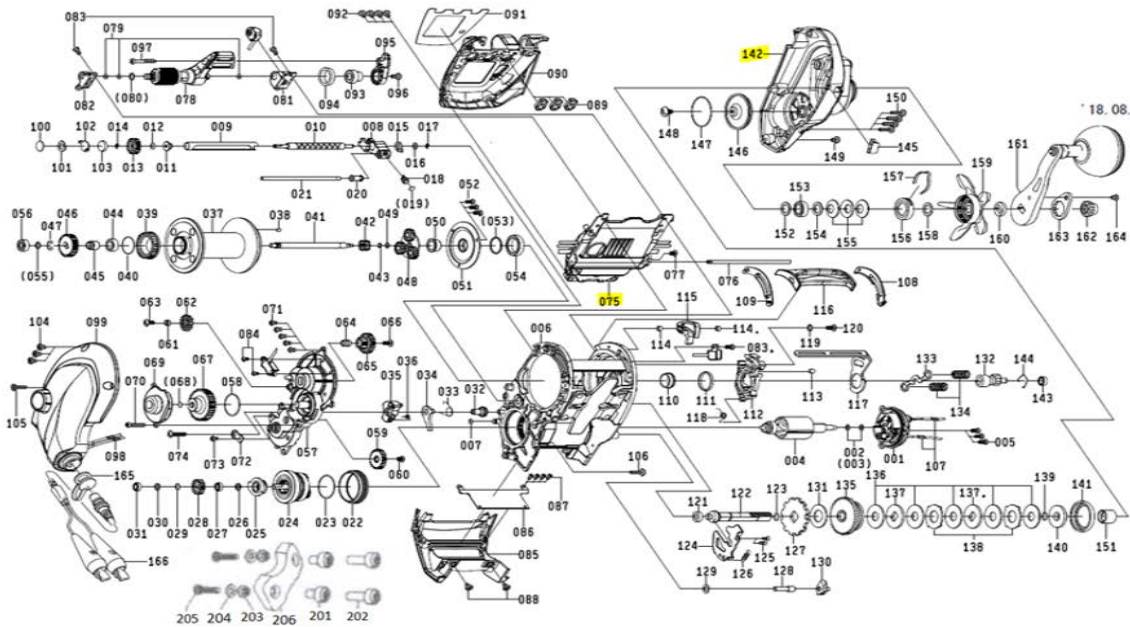


*Please order by parts number, not key number.



Key No	Part No	Description
1	Z02-3766	MOTOR HOLDER
2	375-4104	MOTOR HOLDER WASHER
3	375-4101	MOTOR HOLDER SCREW
4	Z02-3768	MOTOR
5	B55-7607	MOTOR HOLDER SCREW
6	J60-2501	FRAME
7	G21-3001	IC MODULE POST O-RING
8	J59-4101	LEVEL WIND
9	J59-4301	WORM SHIELD
10	J59-4501	WORM SHAFT
11	J59-4601	WORM SHAFT COLLAR (A)
12	F57-1903	WORM SHAFT GEAR WASHER
13	J59-4701	WORM SHAFT GEAR
14	B86-4101	WORM SHAFT RETAINER
15	F85-9101	WORM SHAFT COLLAR (B)
16	F88-9103	WORM SHAFT COLLAR (B)WASHER
17	B86-4101	WORM SHAFT RETAINER
18	F85-9401	PAWL
19	G09-9801	PAWL WASHER
20	G62-5601	LEVEL WIND POST COLLAR
21	J59-4801	LEVEL WIND POST
22	J59-4901	MOTOR GEAR COLLAR
23	F27-4501	MOTOR GEAR O-RING
24	J59-5301	MOTOR GEAR METAL
25	J59-5601	MOTOR GEAR (A)
26	B41-1711	MOTOR GEAR (A)WASHER
27	G46-9002	MOTOR BALL BEARING (A)
28	J59-5901	MOTOR GEAR (B)
29	G77-2101	MOTOR GEAR (B)SPRING WASHER
30	B41-1711	MOTOR GEAR (B)WASHER
31	G46-9002	MOTOR BALL BEARING (B)
32	J59-6001	CLUTCH LEVER (B) COLLAR
33	J59-6101	CLUTCH LEVER (B) STOPPER SPRING
34	J59-6201	CLUTCH LEVER (B) STOPPER
35	J59-6301	CLUTCH LEVER (B)
36	J64-2701	CLUTCH LEVER (B)SPRING
37	J59-6401	SPOOL
38	G64-3501	SPOOL PIN
39	J59-6601	SPOOL GEAR (A)
40	G07-4601	SPOOL GEAR (A) RING
41	J59-6701	SPOOL SHAFT
42	J59-6801	SPOOL SHAFT GEAR (A)
43	B33-9801	SPOOL SHAFT GEAR (A) RETAINER
44	J03-0302	SPOOL GEAR BALL BEARING (A)
45	J59-6901	SPOOL GEAR BEARING COLLAR
46	J59-7001	SPOOL SHAFT GEAR (B)
47	320-7601	SPOOL SHAFT GEAR RETAINER
48	J59-7101	SPOOL GEAR (B)
49	375-4102	SPOOL GEAR (B)WASHER
50	J59-7301	SPOOL PLATE COLLAR
51	J59-7401	SPOOL PLATE
52	B55-7607	SPOOL PLATE SCREW
53	G20-5501	SPOOL SHAFT WASHER
54	G37-0701	SPOOL PLATE BALL BEARING
55	B41-1703	SPOOL SHAFT GEAR (B)WASHER
56	G42-7701	SPOOL SHAFT BALL BEARING (A)
57	J59-8001	SET PLATE
58	H15-7002	IDLE GEAR (D) O-RING

Key No	Part No	Description
59	J59-7601	IDLE GEAR (A)
60	G94-0404	IDLE GEAR (A)SCREW
61	H86-9601	IDLE GEAR (B) COLLAR
62	J59-7801	IDLE GEAR (B)
63	351-1801	IDLE GEAR (B)SCREW
64	J10-8301	IDLE GEAR (C) COLLAR
65	J59-7901	IDLE GEAR (C)
66	351-1801	IDLE GEAR (C)SCREW
67	J59-8201	IDLE GEAR (D)
68	G09-9801	IDLE GEAR (D)WASHER
69	J59-8101	IDLE GEAR (D) PLATE
70	353-0001	IDLE GEAR (D) PLATE SCREW
71	B55-7607	SET PLATE SCREW
72	J64-5101	MEGATWIN LEVER PLATE
73	B55-7607	MEGATWIN LEVER PLATE SCREW(A)
74	J79-0301	MEGATWIN LEVER PLATE SCREW(B)
75	J56-0802	IC MODULE
76	J59-8501	IC MODULE POST
77	G94-0405	IC MODULE SCREW
78	J59-8601	JOG POWER LEVER (A)
79	J03-7601	JOG POWER LEVER O-RING
80	375-3003	JOG POWER LEVER WASHER
81	J59-9001	JOG POWER LEVER HOLDER (R)
82	J59-9101	JOG POWER LEVER HOLDER (L)
83	B55-7607	SENSOR SCREW
84	H15-8201	SENSOR SCREW
85	J63-3801	FINGER COVER
86	J63-3901	LINE GUARD
87	H58-5401	LINE GUARD SCREW
88	H75-3313	FINGER COVER SCREW
89	J27-2201	PUSH BUTTON
90	J59-9301	IC MODULE COVER
91	J60-2602	IC MODULE COVER PLATE
92	H75-3313	IC MODULE COVER SCREW
93	J73-3501	JOG POWER LEVER COLLAR
94	J26-6901	JOG POWER LEVER RING
95	J59-9201	JOG POWER LEVER (B)
96	H75-3313	JOG POWER LEVER (B)SCREW
97	J32-6101	JOG POWER LEVER (A)SCREW
98	G07-9501	CORD COVER
99	J59-9401	LS PLATE
100	F67-3802	MECHANICAL BRAKE KNOB WASHER(A)
101	J19-7401	MECHANICAL BRAKE KNOB WASHER(B)
102	J05-6901	MECHANICAL BRAKE KNOB WASHER(C)
103	G22-5103	MECHANICAL BRAKE KNOB WASHER(D)
104	H75-3313	LS PLATE SCREW(A)
105	H75-3311	LS PLATE SCREW(B)
106	G17-1401	LS PLATE SCREW(C)
107	G07-9501	CORD COVER
108	J59-3401	CLUTCH LEVER PLATE (R)
109	J59-3501	CLUTCH LEVER PLATE (L)
110	J59-3601	CLUTCH CAM BEARING
111	G20-2701	CLUTCH CAM COLLAR
112	J59-3901	CLUTCH CAM
113	F27-0901	CLUTCH CAM MAGNET
114	G71-1001	CLUTCH CAM COLLAR
115	J60-0901	CLUTCH LEVER (C)
116	J59-3701	CLUTCH LEVER (A)

Key No	Part No	Description
117	J59-4001	CLUTCH CAM PLATE
118	J60-0001	CLUTCH CAM SPRING
119	H15-9201	CLUTCH CAM WASHER
120	351-1801	CLUTCH CAM SCREW
121	G08-1901	GEAR SHAFT COLLAR
122	J59-9901	GEAR SHAFT
123	F65-7801	GEAR SHAFT O-RING
124	J70-5801	GEAR SHAFT PLATE
125	E13-4509	GEAR SHAFT PLATE SCREW
126	J18-1101	KICK LEVER SPRING
127	J60-0101	RATCHET
128	J64-4901	STOPPER PIN
129	G85-0702	STOPPER WASHER
130	G91-5601	STOPPER
131	J60-0201	DRIVE GEAR WASHER
132	J60-0601	PINION
133	G73-5201	CLUTCH PLATE
134	F30-4701	CLUTCH PLATE SPRING
135	J60-0301	DRIVE GEAR
136	H11-8402	DRAG WASHER
137	G35-8501	DRAG DISC WASHER
138	F79-6101	DRAG LIP WASHER
139	F65-7801	DRAG O-RING
140	J60-0501	DRAG COLLAR
141	G69-7601	DRAG PACKING
142	J88-2401	RS PLATE
143	G46-7102	PINION BALL BEARING
144	H16-0801	PINION BEARING RING
145	E28-6001	LINE STOPPER
146	J60-1101	RS COVER PLATE
147	F27-4501	RS COVER PLATE O-RING
148	J51-0101	RS COVER PLATE SCREW
149	H75-3313	RS PLATE SCREW(A)
150	H75-3311	RS PLATE SCREW(B)
151	G29-0901	DRAG COLLAR
152	373-7813	HANDLE BEARING WASHER(A)
153	G52-3401	HANDLE BALL BEARING
154	373-7813	HANDLE BEARING WASHER(B)
155	E25-3501	DRAG SPRING WASHER
156	H69-1901	DRAG HOLDER
157	H93-3201	DRAG HOLDER LEAF SPRING
158	H92-9501	HANDLE WASHER
159	J06-3302	STAR DRAG
160	F86-3202	HANDLE COLLAR
161	J05-7502	HANDLE
162	G63-4603	HANDLE NUT
163	B88-4703	HANDLE LOCK PLATE
164	J31-6701	HANDLE LOCK PLATE SCREW
165	F66-1002	CONNECTOR CAP
166	G86-8701	POWER CORD
201	J87-8301	CLAMP NUT (Short)
202	F18-7601	CLAMP NUT (Long)
203	F18-7801	CLAMP SCREW NUT
204	G39-2401	CLAMP PLATE NUT WASHER
205	J87-8401	CLAMP PLATE SCREW
206	H60-0602	CLAMP PLATE