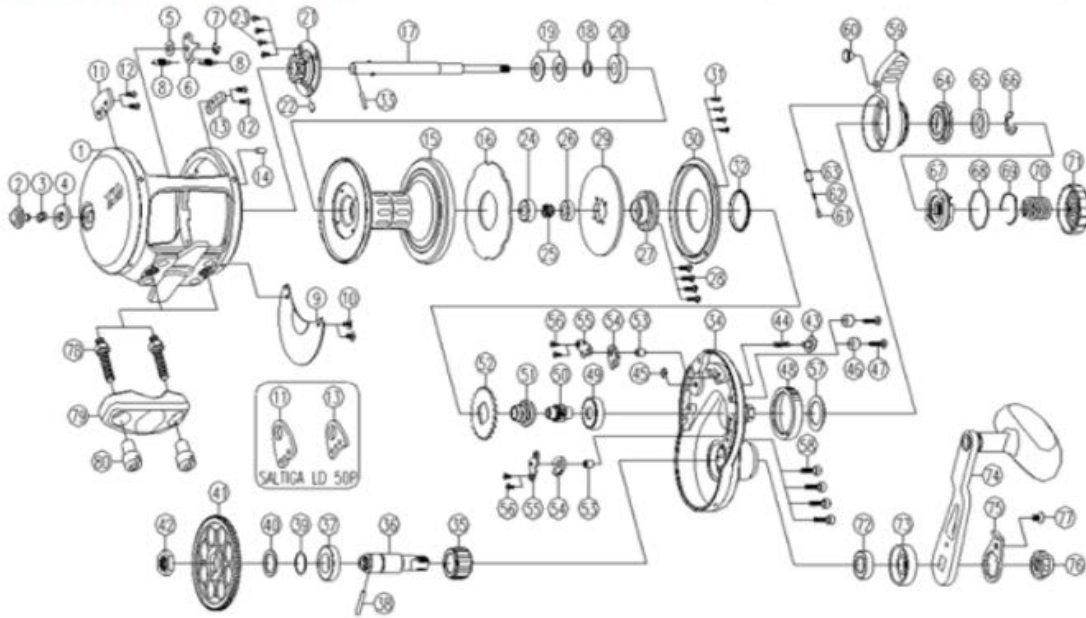


# CONVENTIONAL REEL

# SAGLD50HS

\*Please order by parts number, not key number.



| Key No | Part No  | Description                    |
|--------|----------|--------------------------------|
| 1      | E73-0201 | FRAME                          |
| 2      | E76-0501 | CLICK BUTTON                   |
| 3      | E72-5301 | CLICK COLLAR                   |
| 4      | E72-5201 | CLICK PLATE                    |
| 5      | E61-7402 | CLICK BUTTON WASHER            |
| 6      | E67-9301 | CLICK PAWL                     |
| 7      | 320-1402 | CLICK PAWL RETAINER            |
| 8      | E73-2201 | CLICK SPRING                   |
| 9      | E73-0801 | FRAME PLATE                    |
| 10     | F50-5703 | FRAME PLATE SCREW              |
| 11     | E75-8501 | HARNES LUG (L)                 |
| 12     | E76-0901 | HARNES LUG SCREW               |
| 13     | E75-8601 | HARNES LUG (R)                 |
| 14     | E73-2501 | FRAME PIN                      |
| 15     | E75-8701 | SPOOL                          |
| 16     | E75-8801 | DRAG WASHER                    |
| 17     | E73-2901 | MAIN SHAFT                     |
| 18     | E73-1001 | SPOOL BEARING WASHER           |
| 19     | E73-1201 | DRAG SPRING WASHER             |
| 20     | H42-8701 | SPOOL BALL BEARING (A)         |
| 21     | E73-3301 | DRAG CLICK CAP                 |
| 22     | B35-2701 | BRAKE COLLAR                   |
| 23     | G29-7001 | DRAG CLICK CAP SCREW           |
| 24     | G53-6001 | SPOOL BALL BEARING (B)         |
| 25     | E73-6701 | SPOOL TENSION SPRING           |
| 26     | F81-2104 | SPOOL BALL BEARING (C)         |
| 27     | E73-6901 | DRAG METAL                     |
| 28     | 351-1008 | DRAG METAL SCREW               |
| 29     | E73-7101 | DRAG PLATE                     |
| 30     | E75-8901 | DRAG WASHER COVER              |
| 31     | E73-7201 | DRAG WASHER COVER SCREW        |
| 32     | E73-1601 | SPOOL PACKING                  |
| 33     | E73-7301 | MAIN SHAFT PIN                 |
| 34     | E76-0601 | RIGHT SIDE PLATE               |
| 35     | E68-7801 | ONEWAY CLUTCH                  |
| 36     | E73-1701 | DRIVE SHAFT                    |
| 37     | F64-1602 | DRIVE SHAFT BALL BEARING       |
| 38     | E68-6801 | DRIVE SHAFT PIN                |
| 39     | G20-5501 | DRIVE SHAFT BEARING WASHER (A) |
| 40     | E68-7002 | DRIVE SHAFT BEARING WASHER (B) |

| Key No | Part No  | Description                |
|--------|----------|----------------------------|
| 41     | E74-2501 | DRIVE GEAR                 |
| 42     | E68-7201 | DRIVE SHAFT NUT            |
| 43     | E75-9601 | PUSH BUTTON                |
| 44     | E68-6201 | PUSH BUTTON SPRING         |
| 45     | B33-9801 | PUSH BUTTON RETAINER       |
| 46     | E64-4301 | DRAG LEVER STOPPER COLLAR  |
| 47     | E59-1601 | DRAG LEVER STOPPER SCREW   |
| 48     | E75-8201 | CLICK GEAR                 |
| 49     | E68-5601 | PINION BALL BEARING        |
| 50     | E74-2601 | PINION GEAR                |
| 51     | E74-2701 | PINION METAL               |
| 52     | E73-1901 | ANTI REVERSE RATCHET       |
| 53     | E75-9001 | ANTI REVERSE PAWL PIN      |
| 54     | E75-9301 | ANTI REVERSE PAWL          |
| 55     | E76-1101 | ANTI REVERSE PAWL RETAINER |
| 56     | E64-3802 | ANTI REVERSE PAWL SCREW    |
| 57     | E73-2101 | DRAG LEVER WASHER          |
| 58     | E73-9101 | SIDE PLATE SCREW           |
| 59     | E73-2401 | DRAG LEVER                 |
| 60     | E68-4202 | DRAG LEVER COLLAR          |
| 61     | E75-9401 | CLICK PAWL                 |
| 62     | M16-3301 | CLICK PAWL SPRING          |
| 63     | E72-8201 | CLICK PAWL COLLAR          |
| 64     | E73-9701 | PRESET CAM (A)             |
| 65     | E73-1101 | PRESET BUSHING             |
| 66     | E73-9801 | PRESET BUSHING RETAINER    |
| 67     | E73-9001 | PRESET CAM (B)             |
| 68     | E72-9001 | PRESET CAM O RING          |
| 69     | E68-4801 | PRESET CLICK LEAF SPRING   |
| 70     | H48-4801 | PRESET KNOB SPRING         |
| 71     | E74-0201 | PRESET DRAG KNOB           |
| 72     | G52-2801 | HANDLE BALL BEARING        |
| 73     | E75-9701 | HANDLE CAP                 |
| 74     | E74-3201 | HANDLE ASSEMBLY            |
| 75     | E74-3101 | HANDLE LOCK PLATE          |
| 76     | E76-0301 | HANDLE NUT                 |
| 77     | E74-3001 | HANDLE LOCK PLATE SCREW    |
| 78     | E74-2003 | CLAMP BOLT                 |
| 79     | J01-4404 | ROD CLAMP                  |
| 80     | H60-0801 | CLAMP NUT                  |