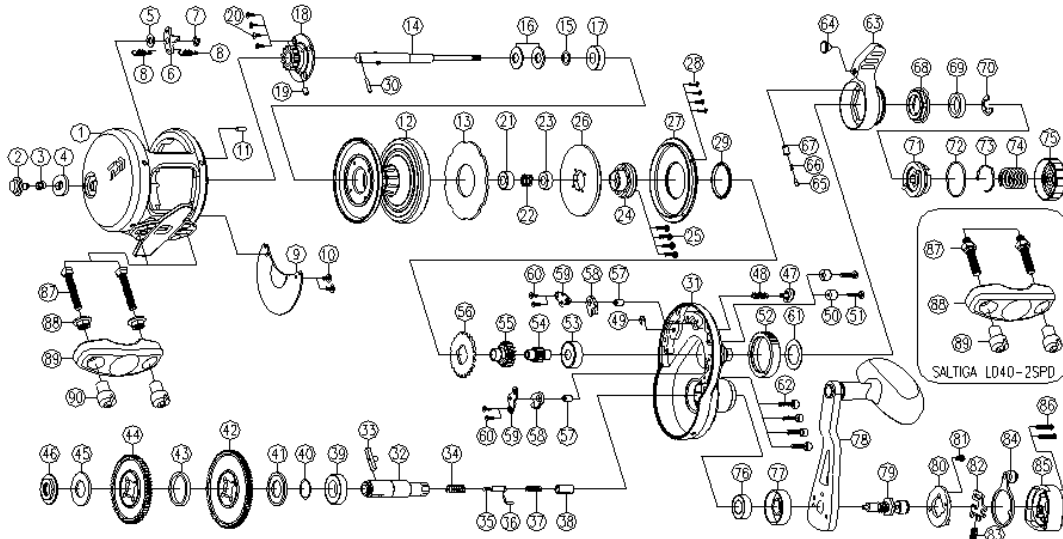


# CONVENTIONAL REEL

SAGLD35\_40-2SPD

\*Please order by parts number, not key number.



Key No	Part No	Description
1	E76-2601	FRAME
2	E76-0501	CLICK BUTTON
3	E72-5301	CLICK COLLAR
4	E72-5201	CLICK PLATE
5	E61-7402	CLICK BUTTON WASHER
6	E67-9301	CLICK PAWL
7	320-1402	CLICK PAWL RETAINER
8	E73-2201	CLICK SPRING
9	E76-3109	FRAME PLATE
10	F50-5703	FRAME PLATE SCREW
11	E73-2501	FRAME PIN
12	E76-3201	SPOOL
13	E76-3301	DRAG WASHER
14	E76-3401	MAIN SHAFT
15	E73-1001	BEARING WASHER
16	E73-1201	DRAG SPRING WASHER
17	H42-8701	SPOOL BALL BEARING (A)
18	E73-3301	DRAG CLICK CAP
19	B35-2701	BRAKE COLLAR
20	G29-7001	DRAG CLICK CAP SCREW
21	G53-6001	SPOOL BALL BEARING (B)
22	E73-6701	TENTION SPRING
23	F81-2104	SPOOL BALL BEARING (C)
24	E73-6901	DRAG METAL
25	351-1008	DRAG METAL SCREW
26	E76-3601	DRAG PLATE
27	E76-3701	DRAG WASHER COVER
28	E73-7201	DRAG WASHER COVER SCREW
29	E73-1601	DRAG WASHER COVER PACKING
30	E73-7301	MAIN SHAFT PIN
31	E76-3801	RIGHT SIDE PLATE
32	E73-7401	DRIVE SHAFT
33	E73-7501	DRIVE SHAFT PIN (A)
34	E73-7601	DRIVE SHAFT SPRING (A)
35	E73-7701	DRIVE SHAFT SCREW
36	E73-7801	DRIVE SHAFT PIN(B)
37	E73-8001	DRIVE SHAFT SPRING (B)
38	E73-7901	DRIVE SHAFT COLLAR
39	F64-1602	DRIVE SHAFT BALL BEARING
40	E73-8101	DRIVE SHAFT BEARING WASHER
41	E73-8601	DRIVE GEAR COLLAR (A)
42	E77-8901	DRIVE GEAR (A)
43	E73-8401	DRIVE GEAR COLLAR (B)
44	E73-8501	DRIVE GEAR (B)
45	E73-8601	DRIVE GEAR COLLAR (C)
46	E73-8701	DRIVE SHAFT NUT
47	E75-9601	PUSH BUTTON
48	E68-6201	PUSH BUTTON SPRING
49	B33-9801	PUSH BUTTON RETAINER
50	E64-4301	DRAG LEVER STOPPER COLLAR
51	E59-1601	DRAG LEVER STOPPER SCREW

Key No	Part No	Description
52	E75-8201	CLICK GEAR
53	E68-5601	PINION BALL BEARING
54	E77-9001	PINION GEAR (A)
55	E73-8901	PINION GEAR (B)
56	E73-1901	ANTI REVERSE RATCHET
57	E75-9001	ANTI REVERSE PAWL PIN
58	E75-9301	ANTI REVERSE PAWL
59	E76-1101	ANTI REVERSE PAWL RETAINER
60	E64-3802	ANTI REVERSE PAWL SCREW
61	E73-2101	DRAG LEVER WASHER
62	E73-9101	SIDE PLATE SCREW
63	E73-2401	DRAG LEVER
64	E75-9501	DRAG LEVER COLLAR
65	E75-9401	CLICK PAWL
66	M16-3301	CLICK PAWL SPRING
67	E72-8201	CLICK PAWL COLLAR
68	E76-2001	PRESET CAM (A)
69	E73-1101	BUSHING
70	E73-9801	BUSHING RETAINER
71	E73-9001	PRESET CAM (B)
72	E72-9001	PRESET CAM (B) O RING
73	E68-4801	CLICK LEAF SPRING
74	H48-4801	DRAG KNOB SPRING
75	E74-0201	PRESET DRAG KNOB
76	G52-2801	HANDLE BALL BEARING
77	E75-9701	HANDLE CAP (A)
78	E76-1901	HANDLE ASSEMBLY
79	E76-1601	HANDLE SCREW
80	H42-6101	HANDLE PLATE
81	350-8912	HANDLE PLATE SCREW
82	H42-6301	HANDLE LEVER PLATE
83	H42-6201	HANDLE LEVER PLATE SPRING
84	H42-6401	HANDLE LEVER
85	H56-2103	HANDLE CAP (B)
86	G04-0815	HANDLE CAP SCREW
87	E77-4101	CLAMP BOLT
88	E61-4001	CLAMP NUT (A)
89	H60-0603	ROD CLAMP
90	H60-0801	CLAMP NUT (B)

**SAGLD40-2SPD Special Parts**

Key No	Part No	Description
1	E76-4001	FRAME
9	E76-3102	FRAME PLATE
12	E76-4301	SPOOL
14	E76-4401	MAIN SHAFT
31	E76-3802	RIGHT SIDE PLATE
87	E74-2003	CLAMP BOLT
88	J01-4404	ROD CLAMP
89	H60-0801	CLAMP NUT (B)