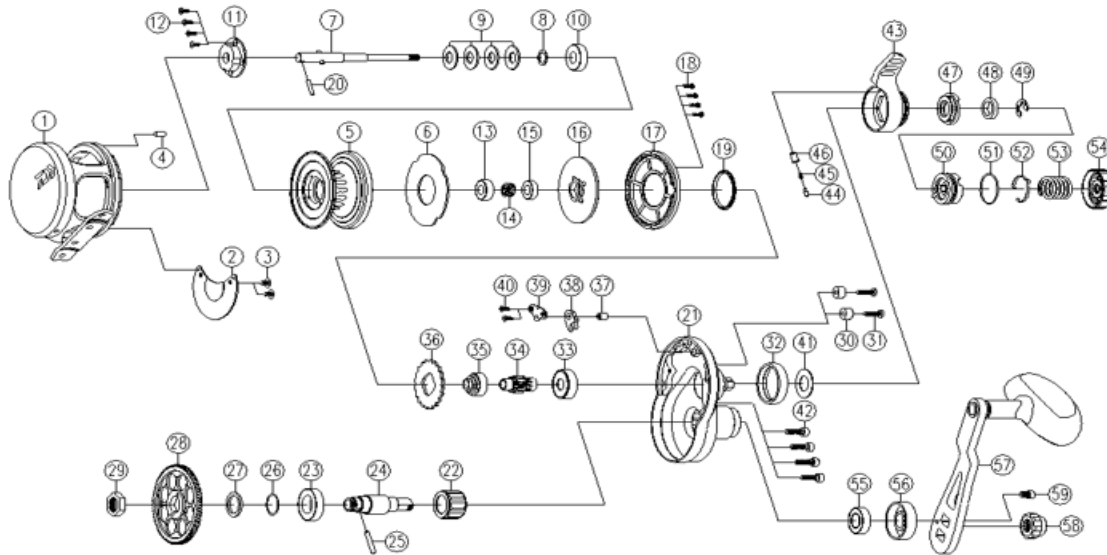


CONVENTIONAL REEL

SAGLD10H

*Please order by parts number, not key number.



Key No	Part No	Description	Key No	Part No	Description
1	E77-1201	FRAME	31	E59-1601	DRAG LEVER STOPPER SCREW
2	E67-0012	FRAME PLATE	32	E76-7401	CLICK GEAR
3	E73-0001	FRAME PLATE SCREW	33	E17-5802	PINION BALL BEARING
4	G21-1701	FRAME PIN	34	E77-2201	PINION GEAR
5	E77-0301	SPOOL	35	E65-6701	PINION METAL
6	E76-6901	DRAG WASHER	36	E76-7801	ANTI REVERSE RATCHET
7	E77-0401	MAIN SHAFT	37	E76-7901	ANTI REVERSE PAWL PIN
8	E57-8301	BEARING WASHER	38	E64-3501	ANTI REVERSE PAWL
9	E64-1201	DRAG SPRING WASHER	39	E64-3701	ANTI REVERSE PAWL RETAINER
10	G53-6001	SPOOL BALL BEARING (A)	40	E64-3801	ANTI REVERSE PAWL SCREW
11	E76-7302	DRAG CLICK CAP	41	E76-8001	DRAG LEVER WASHER
12	E64-3802	DRAG CLICK CAP SCREW	42	E73-9102	SIDE PLATE SCREW
13	G49-8511	SPOOL BALL BEARING (B)	43	E76-8101	DRAG LEVER
14	E66-5501	TENTION SPRING	44	E75-9401	CLICK PAWL
15	G53-6001	SPOOL BALL BEARING (C)	45	M16-3301	CLICK PAWL SPRING
16	E66-5602	DRAG PLATE	46	E72-8201	CLICK PAWL COLLAR
17	E66-6001	DRAG WASHER COVER	47	E76-8401	PRESET CAM (A)
18	E66-8901	DRAG WASHER COVER SCREW	48	E76-8501	BUSHING
19	E66-5801	DRAG WASHER COVER PACKING	49	E76-8701	BUSHING RETAINER
20	E64-1601	MAIN SHAFT PIN	50	E76-8901	PRESET CAM (B)
21	E77-0002	RIGHT SIDE PLATE	51	E76-8801	PRESET CAM (B) O RING
22	E68-7801	ONEWAY CLUTCH	52	E76-9001	CLICK LEAF SPRING
23	G47-2501	DRIVE SHAFT BALL BEARING	53	E76-9201	DRAG KNOB SPRING
24	E77-0701	DRIVE SHAFT	54	E76-9101	PRESET DRAG KNOB
25	E64-9201	DRIVE SHAFT PIN	55	G52-2801	HANDLE BALL BEARING
26	E64-9301	DRIVE SHAFT BEARING WASHER	56	E66-8101	HANDLE CAP
27	E64-9301	DRIVE GEAR WASHER	57	E77-0901	HANDLE ASSEMBLY
28	E77-0801	DRIVE GEAR	58	E76-0301	HANDLE NUT
29	E68-7201	DRIVE SHAFT NUT	59	G21-8201	HANDLE LOCK SCREW
30	E64-4301	DRAG LEVER STOPPER COLLAR			