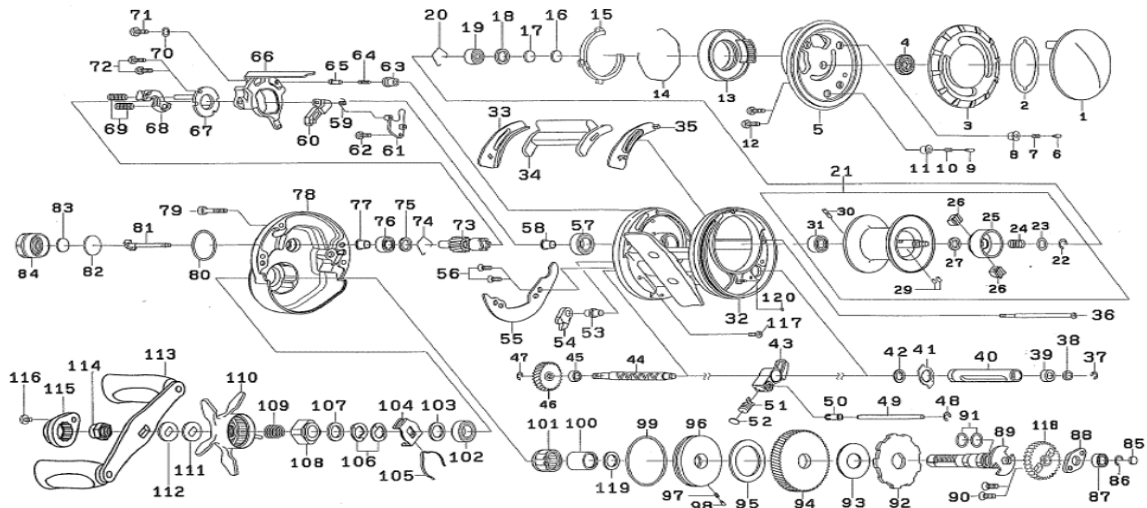


RYOGA 1520HL



Key No	Part No	Description
1	J62-5202	RS COVER
2	J62-5101	MAG DIAL PLATE
3	J72-8402	MAG DIAL
4	H17-6201	MAG DIAL GEAR
5	J67-3501	RS PLATE
6	J73-1201	LEVER PLATE PIN
7	J73-1301	LEVER PLATE SPRING
8	J63-5101	LEVER PLATE COLLAR
9	J28-6301	MAG DIAL PIN
10	J73-1301	MAG DIAL SPRING
11	J62-4301	MAG DIAL COLLAR
12	G55-7111	LS PLATE SCREW
13	J63-2401	MAG HOLDER
14	H45-4501	MAG HOLDER RING
15	J63-3601	LEVER PLATE
16	375-7404	RS BEARING WASHER(A)
17	375-7411	RS BEARING WASHER(B)
18	G18-5101	RS BEARING WASHER(C)
19	G51-1506	RS BALL BEARING
20	F03-2201	RS BEARING RING
21	Z02-3932	SPOOL ASSY(22-31)
22	320-8202	SPOOL HOLDER RETAINER
23	J49-7001	SPOOL HOLDER WASHER(A)
24	H80-1701	SPOOL HOLDER SPRING
25	H93-0701	SPOOL HOLDER
26	H16-9001	BALANCER
27	F57-4303	SPOOL HOLDER WASHER(B)
29	H66-5301	SPOOL HOLDER PIN
30	J25-2301	SPOOL PIN
31	G49-8511	SPOOL BALL BEARING
32	J67-3301	FRAME
33	J19-5101	CLUTCH LEVER PLATE(L)
34	J19-5201	CLUTCH LEVER
35	J63-3001	CLUTCH LEVER PLATE(R)
36	J66-6601	LS PLATE SCREW (A)
37	320-5301	WORM SHAFT RETAINER
38	B41-1703	WORM SHAFT WASHER
39	G46-9001	WORM SHAFT BALL BEARING
40	J49-9001	WORM SHIELD
41	J62-3801	WORM SHIELD PLATE
42	B55-3803	WORM SHIELD PLATE WASHER
43	J49-8701	LEVEL WIND
44	J65-3001	WORM SHAFT
45	G46-9001	WORM SHAFT BALL BEARING
46	H91-0501	WORM SHAFT GEAR
47	B33-9801	WORM SHAFT GEAR RETAINER
48	B86-4101	LEVEL WIND POST
49	J49-9101	LEVEL WIND POST RETAINER
50	H16-8701	LEVEL WIND POST COLLAR
51	H16-8601	PAWL
52	G09-9801	PAWL WASHER
53	J19-6101	STOPPER PIN
54	H27-0401	STOPPER ASSY
55	J19-5415	LS COVER PLATE
56	H45-5407	COVER PLATE SCREW
57	G43-1002	PINION BALL BEARING
58	J76-4501	PINION BEARING COLLAR
59	H47-3301	KICK REVER SPRING
60	J22-1501	KICK REVER
61	H94-4301	KICK REVER PLATE
62	H29-4101	KICK REVER PLATE SCREW
63	H91-0601	CLUTCH CAM PLATE PIN SPRING COLLAR

Key No	Part No	Description
64	H92-8801	CLUTCH CAM PLATE PIN SPRING
65	J05-5201	CLUTCH CAM PLATE PIN
66	J19-9501	CLUTCH CAM ASSY
67	H65-9101	CLUTCH CAM PLATE
68	H94-4401	CLUTCH PLATE
69	J05-5301	CLUTCH SPRING
70	H15-9201	CLUTCH CAM SCREW WASHER
71	352-2501	CLUTCH CAM SCREW
72	B03-2304	CLUTCH CAM PLATE SCREW
73	Z02-4006	PINION + DRIVE GEAR UNT
74	H16-0801	PINION RING
75	J07-3501	PINION BEARING WASHER
76	J01-9303	PINION BALL BEARING
77	H15-9502	PINION BEARING COLLAR
78	J66-7401	LS PLATE
79	H16-0102	RS PLATE SCREW (B)
80	J27-9701	PINION SHAFT O-RING
81	J19-8801	PINION SHAFT
82	H16-1002	ZERO ADJUSTER WASHER (A)
83	B17-5503	ZERO ADJUSTER WASHER (B)
84	J62-3401	ZERO ADJUSTER
85	G09-9801	GEAR SHAFT WASHER
86	320-8002	GEAR SHAFT RETAINER
87	G53-8007	GEAR SHAFT BALL BEARING
88	H92-8901	GEAR SHAFT PLATE
89	J27-8302	GEAR SHAFT
90	E13-4503	GEAR SHAFT PLATE SCREW
91	F65-7801	GEAR SHAFT O-RING
92	H92-9401	RATCHET
93	J08-5101	DRIVE GEAR WASHER
94	Z02-4006	PINION + DRIVE GEAR UNT
95	J51-7101	DRAG WASHER
96	J49-9201	DRIVE COLLAR
97	J41-0801	DRIVE COLLAR SPRING
98	J56-6201	DRIVE COLLAR PIN
99	H45-2801	DRIVE COLLAR O-RING
100	J32-7701	CLUTCH RING
101	G81-9801	ONE WAY CLUTCH
102	G43-1002	HANDLE BALL BEARING
103	B55-3802	HANDLE BEARING WASHER
104	E70-9201	DRAG HOLDER
105	E71-5601	DRAG LAEF SPRING
106	150-8901	DRAG SPRING WASHER
107	H92-9501	STAR DRAG WASHER
108	J10-2302	STAR DRAG NUT
109	J01-1901	STAR DRAG SPRING
110	J67-3302	STAR DRAG
111	J10-2801	HANDLE WASHER (A)
112	J10-1301	HANDLE WASHER (B)
113	J65-3101	HANDLE
114	G79-3319	HANDLE NUT
115	J62-5401	HANDLE CAP
116	G83-5504	HANDLE CAP SCREW
117	J63-2303	LS PLATE SCREW (C)
118	H91-2701	WORM GEAR
119	B55-3803	CLUTCH RING WASHER
200	B41-1703	HANDLE KNOB WASHER
201	H74-4801	HANDLE KNOB SPRING WASHER
202	J65-3201	HANDLE KNOB
203	G46-9001	HANDLE KNOB BALL BEARING
204	B67-9308	HANDLE KNOB SCREW
205	J68-3101	HANDLE KNOB CAP