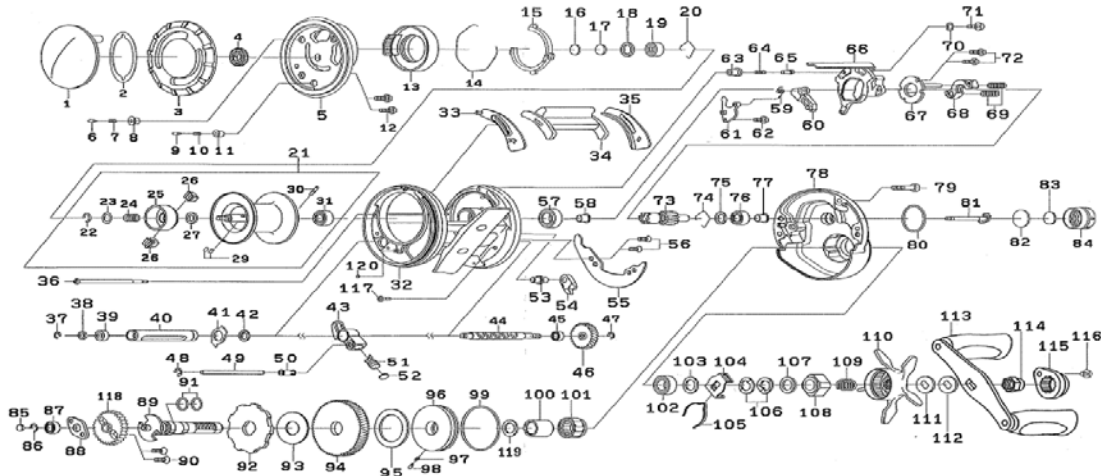


# RYOGA BAITCASTING REEL

Please order by parts number, not key number  
Veuillez indiquer le numéro de la pièce (Non "Key" No.)

## RYOGA 1016H/1520H/1520CC



Key No	Part No	Description	Key No	Part No	Description	Key No	Part No	Description
1	J62-5201	LS COVER	60	J22-1401	KICK REVER	117	J63-2303	RS PLATE SCREW ( C )
2	J62-5101	MAG DIAL PLATE	61	H91-2301	KICK REVER PLATE	118	H91-2701	WORM GEAR
3	J62-5002	MAG DIAL	62	H29-4101	KICK REVER PLATE SCREW	119	B55-3803	CLUTCH RING WASHER
4	H17-6201	MAG DIAL GEAR	63	H91-0601	CLUTCH CAM PLATE PIN SPRING COLLAR	200	B41-1703	HANDLE KNOB WASHER
5	J62-4601	LS PLATE	64	H92-8801	CLUTCH CAM PLATE PIN SPRING	201	H74-4801	HANDLE KNOB SPRING WASHER
6	J73-1201	LEVER PLATE PIN	65	J05-5201	CLUTCH CAM PLATE PIN	202	J31-5504	HANDLE KNOB
7	J73-1301	LEVER PLATE SPRING	66	J21-9601	CLUTCH CAM ASSY	203	G46-9001	HANDLE KNOB BALL BEARING
8	J63-5101	LEVER PLATE COLLAR	67	H65-9101	CLUTCH CAM PLATE	204	B67-9308	HANDLE KNOB SCREW
9	J28-6301	MAG DIAL PIN	68	H92-9001	CLUTCH PLATE	205	J31-5801	HANDLE KNOB CAP
10	J73-1301	MAG DIAL SPRING	69	J05-5301	CLUTCH SPRING			
11	J62-4901	MAG DIAL COLLAR	70	H15-9201	CLUTCH CAM SCREW WASHER			
12	G55-7111	LS PLATE SCREW	71	352-2501	CLUTCH CAM SCREW			
13	J63-2401	MAG HOLDER	72	B03-2904	CLUTCH CAM PLATE SCREW			
14	H45-4501	MAG HOLDER RING	73	Z02-3853	PINION + DRIVE GEAR UNT			
15	J62-4801	LEVER PLATE	74	H16-0801	PINION RING			
16	375-7404	LS BEARING WASHER(A)	75	J07-3501	PINION BEARING WASHER			
17	375-7411	LS BEARING WASHER(B)	76	J01-9303	PINION BALL BEARING			
18	G18-5101	LS BEARING WASHER(C)	77	H15-9502	PINION BEARING COLLAR			
19	G51-1506	LS BALL BEARING	78	J62-3201	RS PLATE			
20	F03-2201	LS BEARING RING	79	H16-0102	RS PLATE SCREW (B)			
21	Z02-3855	SPOOL UNIT( 22-31)	80	J27-9701	PINION SHAFT O-RING			
22	320-8202	SPOOL HOLDER RETAINER	81	J19-8801	PINION SHAFT			
23	J49-7001	SPOOL HOLDER WASHER (A)	82	H16-1002	ZERO ADJUSTER WASHER (A)			
24	H53-7301	SPOOL HOLDER SPRING	83	B17-5503	ZERO ADJUSTER WASHER (B)			
25	J61-8201	SPOOL HOLDER	84	J62-3401	ZERO ADJUSTER			
26	H45-4901	BALANCER	85	G09-9801	GEAR SHAFT WASHER			
27	F57-4303	SPOOL HOLDER WASHER(B)	86	320-8002	GEAR SHAFT RETAINER			
29	H66-5301	SPOOL HOLDER PIN	87	G53-8007	GEAR SHAFT BALL BEARING			
30	J25-2301	SPOOL PIN	88	H15-6501	GEAR SHAFT PLATE			
31	G49-8511	SPOOL BALL BEARING	89	J27-8301	GEAR SHAFT			
32	J67-5001	FRAME	90	E13-4503	GEAR SHAFT PLATE SCREW			
33	J62-3701	CLUTCH LEVER PLATE(L)	91	F65-7801	GEAR SHAFT O-RING			
34	J21-9801	CLUTCH LEVER	92	H92-9401	RATCHET			
35	J19-5001	CLUTCH LEVER PLATE(R)	93	J08-5101	DRIVE GEAR WASHER			
36	J62-3901	RS PLATE SCREW ( A )	94	Z02-3853	PINION + DRIVE GEAR UNT			
37	320-5901	WORM SHAFT RETAINER	95	J51-7101	DRAG WASHER			
38	B41-1703	WORM SHAFT WASHER	96	J49-9201	DRIVE COLLAR			
39	G46-9001	WORM SHAFT BALL BEARING	97	J41-0801	DRIVE COLLAR SPRING			
40	J54-1701	WORM SHIELD	98	J56-6201	DRIVE COLLAR PIN			
41	J62-3801	WORM SHIELD PLATE	99	H45-2801	DRIVE COLLAR O-RING			
42	B55-3803	WORM SHIELD PLATE WASHER	100	J32-7701	CLUTCH RING			
43	J49-8701	LEVEL WIND	101	G81-9801	ONE WAY CLUTCH			
44	J72-9201	WORM SHAFT	102	G43-1002	HANDLE BALL BEARING			
45	G46-9001	WORM SHAFT BALL BEARING	103	B55-3802	HANDLE BEARING WASHER			
46	H91-0501	WORM SHAFT GEAR	104	E70-9201	DRAG HOLDER			
47	B33-9801	WORM SHAFT GEAR RETAINER	105	E71-5601	DRAG LAEF SPRING			
48	B86-4101	LEVEL WIND POST RETAINER	106	150-8901	DRAG SPRING WASHER			
49	J52-7501	LEVEL WIND POST	107	H92-9501	STAR DRAG WASHER			
50	H16-8701	LEVEL WIND POST COLLAR	108	J10-2301	STAR DRAG NUT			
51	H16-8601	PAWL	109	J01-1901	STAR DRAG SPRING			
52	G09-9801	PAWL WASHER	110	J67-3902	STAR DRAG			
53	N/A	N/A	111	J10-2801	HANDLE WASHER (A)			
54	N/A	N/A	112	J10-1301	HANDLE WASHER (B)			
55	J19-5415	RS COVER PLATE	113	J62-4301	HANDLE			
56	H45-5407	COVER PLATE SCREW	114	G79-3318	HANDLE NUT			
57	G43-1002	PINION BALL BEARING	115	J62-5401	HANDLE CAP			
58	J76-4501	PINION BEARING COLLAR	116	G83-5504	HANDLE CAP SCREW			
59	H45-0001	KICK REVER SPRING						

### RYOGA 1520H Special Parts

Key No	Part No	Description
5	J67-3401	LS PLATE
21	Z02-3932	SPOOL UNIT( 22-31)
24	H80-1701	SPOOL HOLDER SPRING
25	H93-0701	SPOOL HOLDER
26	H16-9001	BALANCER
32	J67-3101	FRAME
34	J19-5201	CLUTCH LEVER
36	J66-6601	RS PLATE SCREW ( A )
40	J49-9001	WORM SHIELD
44	J65-3001	WORM SHAFT
49	J49-9101	LEVEL WIND POST RETAINER
53	J19-6101	STOPPER PIN
54	H27-0401	STOPPER ASSY
66	J19-4801	CLUTCH CAM ASSY
73	Z02-3998	PINION + DRIVE GEAR UNT
78	J67-2901	RS PLATE
88	H92-8901	GEAR SHAFT PLATE
94	Z02-3998	PINION + DRIVE GEAR UNT
113	J65-3101	HANDLE
202	J65-3201	HANDLE KNOB
205	J68-3101	HANDLE KNOB CAP

### RYOGA 1520CC Special Parts

Key No	Part No	Description
5	J67-3401	LS PLATE
21	Z02-3932	SPOOL UNIT( 22-31)
24	H80-1701	SPOOL HOLDER SPRING
25	H93-0701	SPOOL HOLDER
26	H16-9001	BALANCER
32	J67-3101	FRAME
34	J19-5201	CLUTCH LEVER
36	J66-6601	RS PLATE SCREW ( A )
40	J49-9001	WORM SHIELD
44	J65-3001	WORM SHAFT
49	J49-9101	LEVEL WIND POST RETAINER
53	J19-6101	STOPPER PIN
54	H27-0401	STOPPER ASSY
66	J19-4801	CLUTCH CAM ASSY
73	Z02-4005	PINION + DRIVE GEAR UNT
78	J66-7102	RS PLATE
88	H92-8901	GEAR SHAFT PLATE
94	Z02-4005	PINION + DRIVE GEAR UNT
113	J65-3101	HANDLE
202	J65-3201	HANDLE KNOB
205	J68-3101	HANDLE KNOB CAP