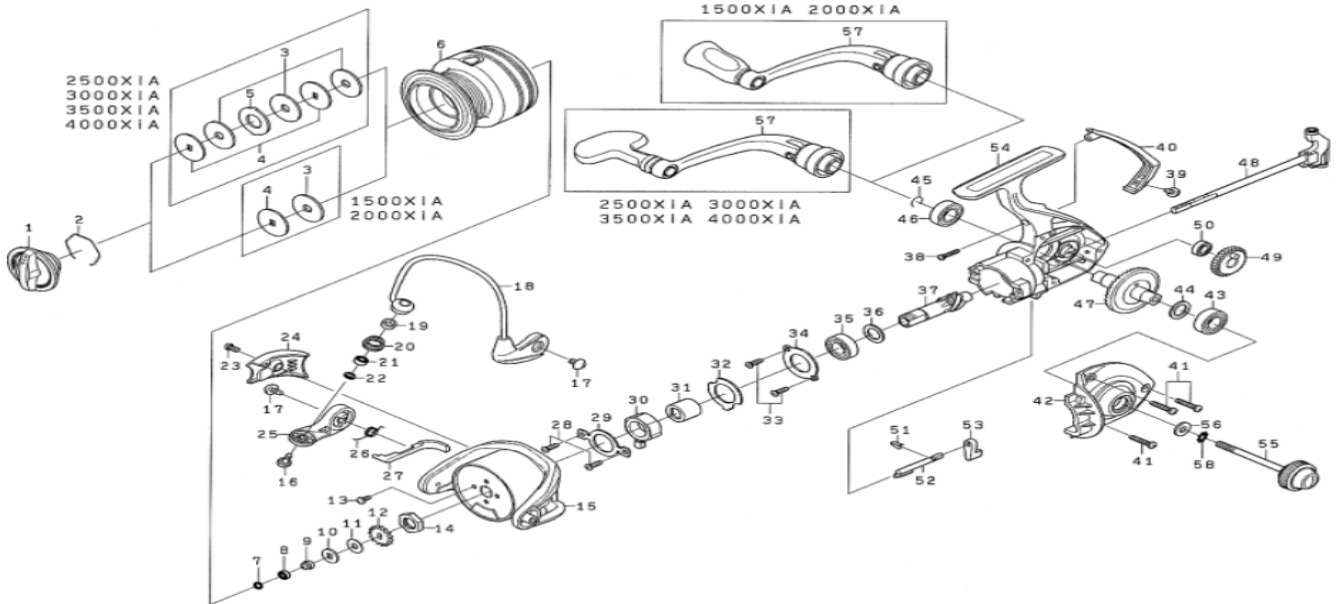


SPINNING REEL REGAL 1500XiA/2000XiA/2500XiA/3000XiA/3500XiA/4000XiA



Key No.	1500XiA Parts No.	Parts Name	2000XiA Parts No.	2500XiA Parts No.	3000XiA Parts No.	3500XiA Parts No.	4000XiA Parts No.
1	G84-0501	Drag Knob	G84-0501	G84-0501	G84-0501	G84-0501	G84-0501
2	F37-3301	Drag Washer Retainer	F37-3301	F37-3301	F37-3301	F37-3301	F37-3301
3	E13-6001	Drag Washer	E13-6001	E13-6001	E13-6001	E13-6001	E13-6001
4	E46-7201	Key Washer	E46-7201	E46-7201	E46-7201	E46-7201	E46-7201
5	-	Eared Washer	-	373-3605	373-3605	373-3605	373-3605
2-6	G92-4601	Spool Assembly	G92-4801	G90-9001	G90-9301	G92-5201	G92-5401
7	G21-3001	O "Ring	G21-3001	G21-3001	G21-3001	G21-3001	G21-3001
8	G90-8801	Ball Bearing(A)	G90-8801	G90-8801	G90-8801	G90-8801	G90-8801
9	G90-8701	Collar(A)	G90-8701	G90-8701	G90-8701	G90-8701	G90-8701
10	E46-7101	Washer(A)	E46-7101	E46-7101	E46-7101	E46-7101	E46-7101
11	E39-8000	Washer(B)	E39-8000	E39-8000	E39-8000	E39-8000	E39-8000
12	G83-9301	Click Gear	G83-9301	G83-9301	G83-9301	G83-9301	G83-9301
13	G62-7701	Screw(A)	G62-7701	G62-7701	G62-7701	G62-7701	G62-7701
14	G12-3301	RotorNut	G12-3301	G12-3301	G12-3301	G12-3301	G12-3301
15	G86-1104	Rotor	G86-1104	G84-1904	G84-1904	G84-1104	G84-1104
16	G19-5602	Screw(B)	G19-5602	G19-5602	G19-5602	G19-5602	G19-5602
17	G20-5001	Screw(C)	G20-5001	G20-5001	G20-5001	G20-5001	G20-5001
18	G86-1401	Bail Assembly	G86-1401	G84-2201	G84-2201	G84-4401	G84-4401
19	G87-4201	Collar(B)	G87-4201	G87-4201	G87-4201	G87-4201	G87-4201
20	F62-5003	Line Roller	F62-5003	F62-5003	F62-5003	F62-5003	F62-5003
21	G90-8402	Ball Bearing(B)	G90-8402	G90-8402	G90-8402	G90-8402	G90-8402
22	F89-7101	Washer(C)	F89-7101	F89-7101	F89-7101	F89-7101	F89-7101
23	G27-0801	Screw(D)	G27-0801	G27-0801	G27-0801	G27-0801	G27-0801
24	G86-1301	Cover(A)	G86-1301	G84-2101	G84-2101	G84-4301	G84-4301
25	G83-8801	Ball Arm	G83-8801	G83-8801	G83-8801	G83-8801	G83-8801
26	F77-7901	Bail Spring	F77-7901	F80-0701	F80-0701	F80-0701	F80-0701
27	G86-1201	Bail Trip Lever	G86-1201	G84-2001	G84-2001	G84-4201	G84-4201
28	G83-7101	Screw(E)	G83-7101	G83-7101	G83-7101	G83-7101	G83-7101
29	G83-7801	Clutch Cam Retainer	G83-7801	G83-7801	G83-7801	G83-7801	G83-7801
30	G84-5601	Roller Clutch	G84-5601	G84-5601	G84-5601	G84-5601	G84-5601
31	G83-5701	Spacing Sleeve	G83-5701	G83-5701	G83-5701	G83-5701	G83-5701
32	G83-7301	Washer(H)	G83-7301	G83-7301	G83-7301	G83-7301	G83-7301
33	G83-7101	Screw(F)	G83-7101	G83-7101	G83-7101	G83-7101	G83-7101
34	G83-7001	Bearing Retainer(A)	G83-7001	G83-7001	G83-7001	G83-7001	G83-7001
35	G83-6901	Ball Bearing(C)	G83-6901	G83-6901	G83-6901	G83-6901	G83-6901
36	373-7805	Washer(D)	373-7805	373-7805	373-7805	-	-
37	G92-3801	Pinion Gear	G92-3801	G90-8501	G90-8501	G92-4201	G92-4201
38	E11-9602	Screw(G)	E11-9602	E11-9602	E11-9602	E11-9602	E11-9602
39	G27-0801	Screw(H)	G27-0801	G27-0801	G27-0801	G27-0801	G27-0801
40	G86-1001	Rear Cover	G86-1001	G84-1801	G84-1801	G84-4001	G84-4001
41	G11-5001	Screw(I)	G11-5001	G11-5001	G11-5001	G11-5001	G11-5001
42	G86-0904	Side Cover	G86-0904	G84-1705	G84-1705	G84-3904	G84-3904
43	G83-6901	Ball Bearing(D)	G83-6901	G83-6901	G83-6901	G83-6901	G83-6901
44	373-7800	Washer(E)	373-7800	373-7800	373-7800	373-7800	373-7800
45	G52-5101	Bearing Retainer(B)	G52-5101	G52-5101	G52-5101	G52-5101	G52-5101
46	G83-6901	Ball Bearing(E)	G83-6901	G83-6901	G83-6901	G83-6901	G83-6901
47	G90-8601	Drive Gear	G90-8601	G90-8601	G90-8601	G92-4301	G92-4301
48	G92-3601	Main Shaft	G92-3601	G90-8201	G90-8201	G92-4001	G92-4001
49	G92-3501	Oscillating Gear	G92-3501	G90-8101	G90-8101	G92-3901	G92-3901
50	G90-8001	Ball Bearing(F)	G90-8001	G90-8001	G90-8001	G90-8001	G90-8001
51	G83-6401	Anti-Reverse Cam Spring	G83-6401	G83-6401	G83-6401	G83-6401	G83-6401
52	G83-6201	Anti-Reverse Cam	G83-6201	G83-6201	G83-6201	G83-6201	G83-6201
53	G92-7001	Anti-Reverse Lever	G92-7001	G92-7001	G92-7001	G92-7001	G92-7001
54	G92-4401	Body	G92-4401	G90-7901	G90-7901	G92-5001	G92-5001
55	G83-9801	Handle Screw	G83-9801	G83-9801	G83-9801	G83-9803	G83-9803
56	G86-3901	Washer(F)	G86-3901	G86-3901	G86-3901	G86-3901	G86-3901
57	G92-4501	Handle Assembly	G92-4501	G90-8901	G90-8901	G92-5101	G92-5101
58	160-8101	Washer(G)	160-8101	160-8101	160-8101	160-8101	160-8101