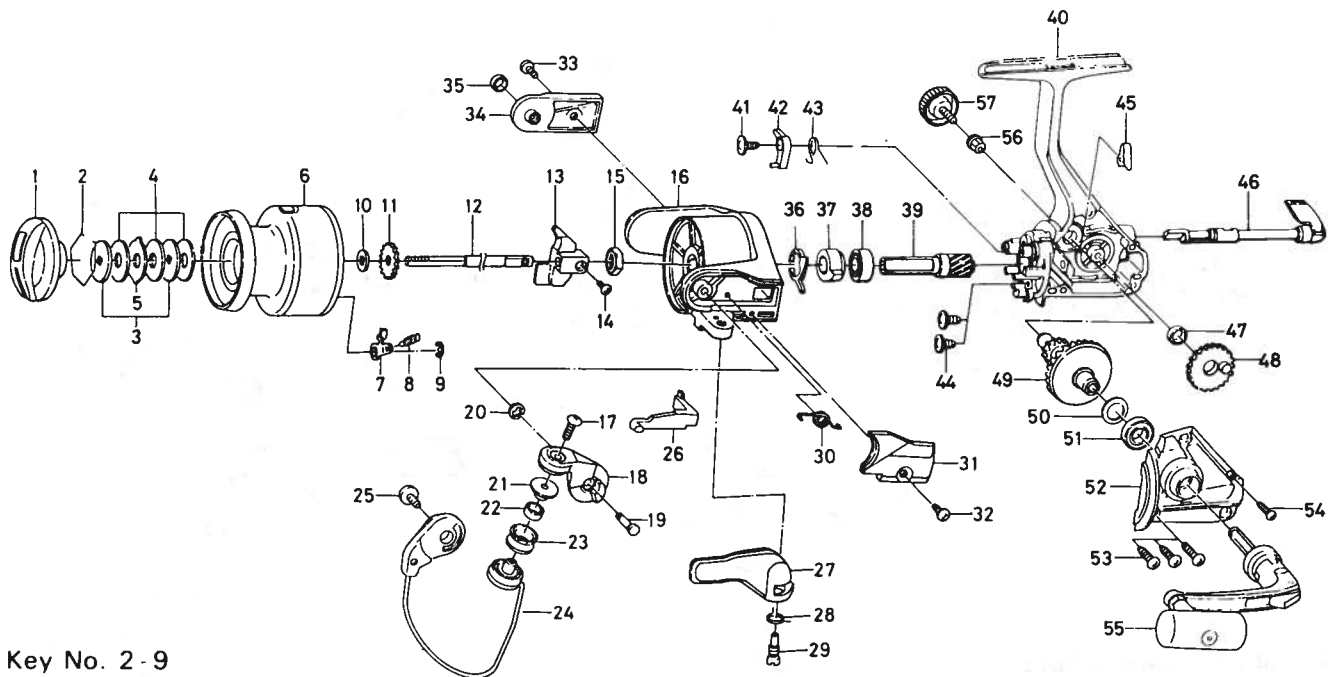


SPINNING REEL — PS1605BL



Key No. 2-9

E 52-4301 Spool assembly

Key

| Key No. | Parts No. | Parts Name |
|---------|-----------|-------------------------|
| 1 | F 19-8801 | Drag knob |
| 2 | 171-7701 | Drag washer retainer |
| 3 | F09-4901 | Key washer |
| 4 | E13-6003 | Drag washer |
| 5 | 373-3603 | Eared washer |
| 6 | E52-4401 | Spool assembly |
| 7 | B07-5304 | Click pawl |
| 8 | E40-3101 | Click spring |
| 9 | 320-5901 | Click retainer |
| 10 | F09-4701 | Spool washer |
| 11 | E46-2701 | Click gear |
| 12 | E48-5301 | Main shaft |
| 13 | F09-1301 | Oscillating slider |
| 14 | 352-1502 | Oscillating block screw |
| 15 | 340-6602 | Rotor nut |
| 16 | F11-0904 | Rotor |
| 17 | B67-9305 | Line roller screw |
| 18 | F17-9801 | Bail arm |
| 19 | E49-3501 | Bail arm screw |
| 20 | 320-5901 | Bail arm screw retainer |
| 21 | F06-6301 | Line roller collar |
| 22 | F05-5601 | Ball bearing A |
| 23 | F05-8901 | Line roller |
| 24 | F19-4301 | Bail assembly |
| 25 | B51-5302 | Bail trip cam screw |
| 26 | E46-2101 | Bail trip lever |
| 27 | F18-0001 | Trigger lever |
| 28 | E36-9901 | Trigger spring |
| 29 | E37-0001 | Trigger screw |

Key

| Key No. | Parts No. | Parts Name |
|---------|-----------|----------------------------|
| 30 | F12-8901 | Bail spring |
| 31 | F19-4001 | Bail spring cover |
| 32 | E36-4201 | Bail spring cover screw |
| 33 | L01-1701 | Bail trip cover screw |
| 34 | F19-4001 | Bail trip cover |
| 35 | F17-3001 | Bail trip collar |
| 36 | E46-2001 | Anti-reverse pawl spring A |
| 37 | F11-1301 | Anti-reverse ratchet |
| 38 | L03-6502 | Ball bearing B |
| 39 | E52-0101 | Pinion gear |
| 40 | F19-3802 | Body assembly |
| 41 | E00-7101 | Anti-reverse pawl screw |
| 42 | E46-1302 | Anti-reverse pawl |
| 43 | E46-1201 | Anti-reverse pawl spring B |
| 44 | E03-7801 | Bearing retainer screw |
| 45 | E32-7801 | Anti-reverse cam spring |
| 46 | F08-5119 | Anti-reverse lever |
| 47 | F13-1601 | Oscillating gear collar |
| 48 | E46-1501 | Oscillating gear |
| 49 | E52-0201 | Drive gear |
| 50 | 373-7800 | Drive gear washer |
| 51 | 631-6901 | Ball bearing C |
| 52 | E50-5606 | Side cover |
| 53 | B83-5001 | Side cover screw A |
| 54 | E15-8601 | Side cover screw B |
| 55 | L05-0102 | Handle assembly |
| 56 | E12-7501 | Handle collar |
| 57 | B92-5002 | Handle lock screw |