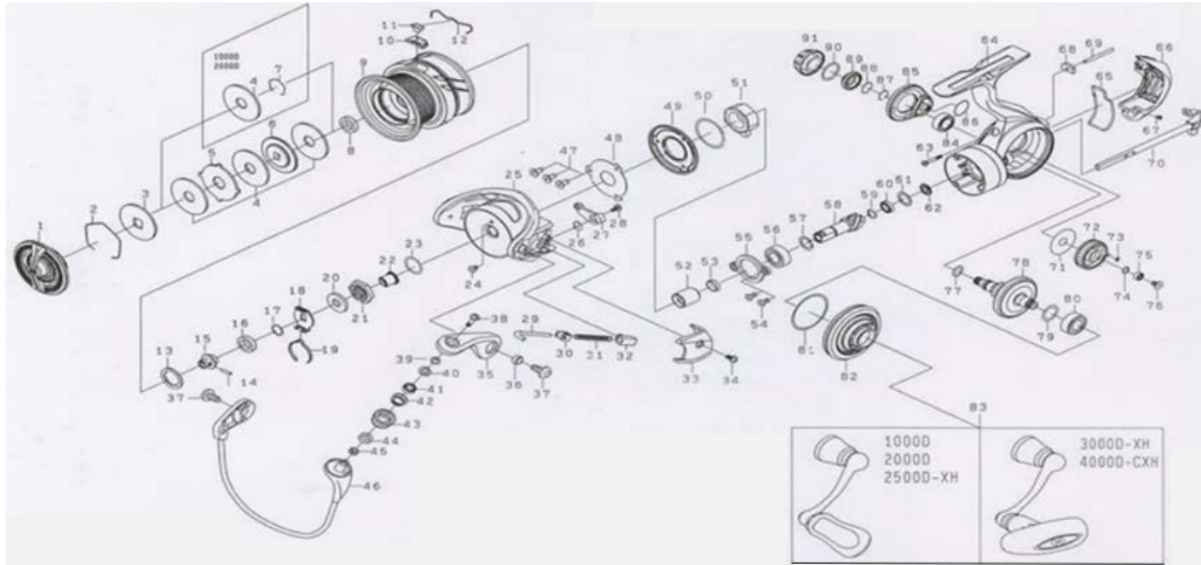


DAWA

SPINNING REEL

PCNMQLT3000D-XH,4000D-CXH

*Please order by parts number, not key number.



Key No	Part No	Description
1	Q79-4901	DRAG KNOB
2	Q34-6101	DRAG WASHER RETAINER
3	Q62-1901	KEY WASHER (A)
4	J67-8801	ATD DRAG WASHER (3PCS/PK)
5	Q73-2001	EARED WASHER
6	J54-9001	KEY WASHER (B)
7	-----	-----
8	Q62-1001	SPOOL COLLAR (A)
2-12	Q79-5401	SPOOL ASSY
10	Q34-5601	LINE STOPPER PLATE
11	Q34-5501	LINE STOPPER
12	Q34-5701	LINE STOPPER SPRING
13	J54-6304	SPOOL WASHER (A)
14	J55-8201	SPOOL METAL SCREW
15	J54-9501	SPOOL METAL
16	H62-4801	SPOOL COLLAR (B)
17	J60-2201	SPOOL WASHER (B)
18	Q79-8201	CLICK SPRING HOLDER
19	Q79-7701	CLICK LEAF SPRING
20	H98-6901	ROTOR NUT PACKING
21	Q73-5801	ROTOR NUT
22	J80-8501	ROTOR NUT COLLAR
23	372-7602	ROTOR NUT WASHER
24	H02-2701	ROTOR NUT SCREW
25	Q12-0543	ROTOR
26	H41-3601	BAIL TRIP LEVER SPRING
27	Q12-0701	BAIL TRIP LEVER
28	H41-7701	BAIL TRIP LEVER SCREW
29	Q12-1201	BAIL SPRING SHAFT
30	H57-6101	BAIL SPRING PLATE
31	H54-5701	BAIL SPRING
32	Q12-1501	BAIL SPRING HOLDER
33	Q12-1802	BAIL SPRING COVER
34	Q34-2901	BAIL SPRING COVER SCREW
35	Q60-9705	BAIL ARM
36	Q12-1701	BAIL ARM COLLAR
37	Q34-3401	BAIL ARM SCREW
38	H69-7701	ROLLER SCREW
39	Q62-0901	ROLLER COLLAR (A)
40	H03-8301	ROLLER BALL BEARING PACKING
41	G68-6903	ROLLER BALL BEARING
42	H96-0901	ROLLER COLLAR (B)
43	G68-6702	LINE ROLLER
44	H96-0801	ROLLER COLLAR (C)
45	Q61-0001	ROLLER COLLAR (D)
46	Q79-5301	BAIL
47	G17-1402	SHIELD PLATE SCREW
48	J67-5301	SHIELD PLATE
49	Q60-9601	SHIELD COVER
50	J63-9901	ONEWAY CLUTCH WASHER
51	J38-8402	ONEWAY CLUTCH
52	J53-6102	CLUTCH RING
53	Q60-9001	CLUTCH RING COLLAR
54	Q19-5701	BEARING PLATE SCREW
55	Q62-1201	BEARING PLATE
56	G46-7302	PINION BALL BEARING (A)
57	375-8502	PINION BEARING(A) WASHER01mm

Key No	Part No	Description
58-78	Z70-0727	PINION DRIVE GEAR SET
59	H93-1701	PINION SPRING WASHER
60	G46-6202	PINON BALL BEARING (B)
61	G46-6103	PINON BEARING (B) WASHER01MM
62	J38-7701	PINION BEARING (B) COLLAR
63	Q62-1301	REAR COVER SCREW (A)
64	Q79-5201	BODY
65	Q66-7101	REAR COVER PACKING
66	Q66-7203	REAR COVER
67	Q62-1101	REAR COVER SCREW (B)
68	Q60-9201	OSCILLATING POST COLLAR
69	Q12-6305	OSCILLATING POST
70	Q66-6201	MAIN SHAFT
71	J64-4701	OSCILLATING GEAR WASHER
72	Q66-6101	OSCILLATING GEAR
73	G46-6001	OSCILLATING GEAR O RING
74	H12-9201	OSCILLATING BEARING WASHER01mm
75	G46-9005	OSCILLATING GEAR BALL BEARING
76	Q12-6101	OSCILLATING GEAR SCREW
77	G67-0501	DRIVE O RING
79	375-8502	DRIVE BEARING WASHER01mm
80	G46-7302	DRIVE BALL BEARING (A)
81	J57-1501	SIDE COVER O RING
82	Q66-6908	SIDE COVER (L)
83	Q79-5601	HANDLE ASSY
84	G52-2706	DRIVE BALL BEARING (B)
85	Q66-5901	SET PLATE
86	Q66-6001	SET PLATE O RING
87	G47-2401	DRIVE BEARING RETAINER
88	H61-7001	DRIVE BEARING O RING
89	Q60-8907	DRIVE BEARING COVER (R)
90	G16-2401	HANDLE CAP O RING
91	Q34-5103	HANDLE CAP
200	B41-1703	HANDLE KNOB WASHER
201	G72-0001	HANDLE KNOB COLLAR
202	Q36-1701	HANDLE KNOB
203	G72-0001	HANDLE KNOB COLLAR
204	B67-9308	HANDLE KNOB SCREW
205	Q36-1902	HANDLE KNOB CAP

PCNMQLT4000D-CXH Special Parts

Key No	Part No	Description
1	Q79-6101	DRAG KNOB
2-12	Q79-5901	SPOOL ASSY
10	Q35-3501	LINE STOPPER PLATE
25	Q35-1829	ROTOR
27	Q35-1901	BAIL TRIP LEVER
29	Q12-9501	BAIL SPRING SHAFT
31	H41-4201	BAIL SPRING
33	Q35-2104	BAIL SPRING COVER
46	Q79-5801	BAIL
70	Q70-3801	MAIN SHAFT
72	Q70-3701	OSCILLATING GEAR
83	Q79-6201	HANDLE ASSY
202	Q35-3601	HANDLE KNOB
205	Q35-3803	HANDLE KNOB CAP