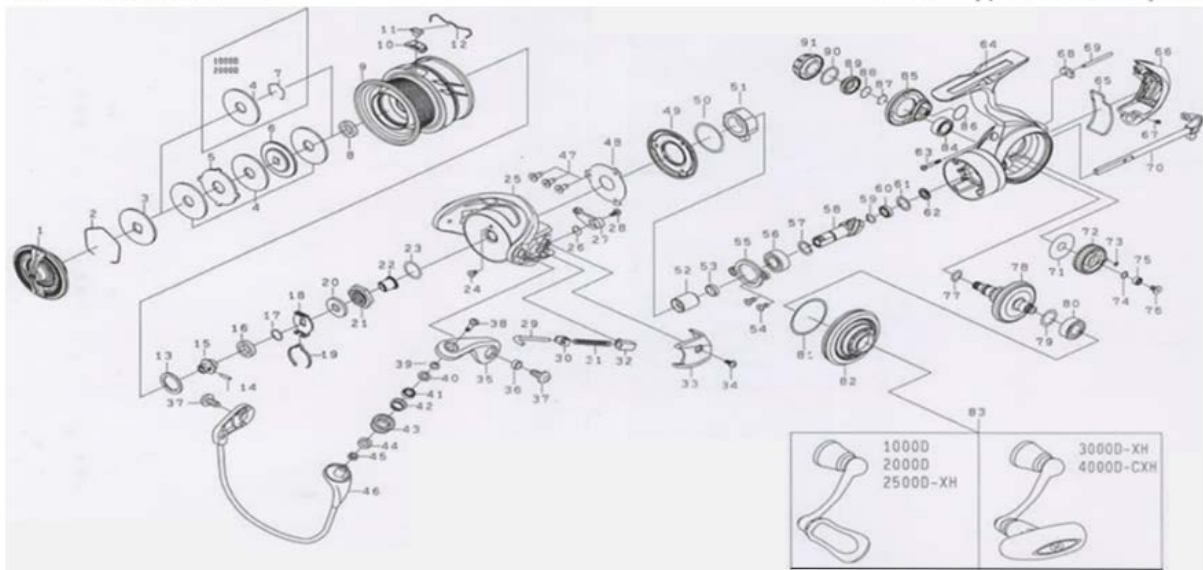


# PCNMQLT SPINNING REEL

## PCNMQLT1000D,2000D,2500D-XH

\*Please order by parts number, not key number.



Key No	Part No	Description	Key No	Part No	Description
1	Q79-3701	DRAG KNOB	68	Q60-9201	OSCILLATING POST COLLAR
2	Q34-6101	DRAG WASHER RETAINER	69	Q60-9302	OSCILLATING POST
3	Q62-1901	KEY WASHER	70	Q64-3201	MAIN SHAFT
4	J67-8901	ATD DRAG WASHER (1PC/PK)	71	H60-7901	OSCILLATING GEAR WASHER
5	-----	-----	72	Q64-3101	OSCILLATING GEAR
6	-----	-----	73	G68-3301	OSCILLATING GEAR O RING
7	B35-8701	BEARING RETAINER	74	H12-9201	OSCILLATING BEARING WASHER01mm
8	Q62-1001	SPOOL COLLAR (A)	75	G46-9005	OSCILLATING GEAR BALL BEARING
2-12	Q79-3501	SPOOL ASSY	76	Q12-6101	OSCILLATING GEAR SCREW
10	Q37-6701	LINE STOPPER PLATE	77	G67-0501	DRIVE O RING
11	Q34-5501	LINE STOPPER	79	375-8502	DRIVE BEARING WASHER01mm
12	Q34-5701	LINE STOPPER SPRING	80	G52-2706	DRIVE BALL BEARING (A)
13	J54-6304	SPOOL WASHER (A)	81	J58-8801	SIDE COVER O RING
14	J55-8201	SPOOL METAL SCREW	82	Q64-3808	SIDE COVER (L)
15	J56-4101	SPOOL METAL	83	Q79-3801	HANDLE ASSY
16	H62-4801	SPOOL COLLAR (B)	84	G52-2706	DRIVE BALL BEARING (B)
17	J60-2201	SPOOL WASHER (B)	85	Q64-2901	SET PLATE
18	Q79-8201	CLICK SPRING HOLDER	86	H81-6401	SET PLATE O RING
19	Q79-7701	CLICK LEAF SPRING	87	G47-2401	DRIVE BEARING RETAINER
20	H98-6901	ROTOR NUT PACKING	88	H61-7001	DRIVE BEARING O RING
21	Q74-8401	ROTOR NUT	89	Q60-8907	DRIVE BEARING COVER (R)
22	J80-8501	ROTOR NUT COLLAR	90	G16-2401	HANDLE CAP O RING
23	372-7602	ROTOR NUT WASHER	91	Q34-5103	HANDLE CAP
24	H02-2701	ROTOR NUT SCREW	200	B41-1703	HANDLE KNOB WASHER
25	Q13-9546	ROTOR	201	G72-0001	HANDLE KNOB COLLAR
26	H44-3301	BAIL TRIP LEVER SPRING	202	Q34-4801	HANDLE KNOB
27	Q13-9601	BAIL TRIP LEVER	203	G72-0001	HANDLE KNOB COLLAR
28	H41-7701	BAIL TRIP LEVER SCREW	204	B67-9308	HANDLE KNOB SCREW
29	Q13-9801	BAIL SPRING SHAFT	205	Q34-5002	HANDLE KNOB CAP
30	H57-6101	BAIL SPRING PLATE	<b>PCNMQLT2000D Special Parts</b>		
31	H44-2401	BAIL SPRING	Key No	Part No	Description
32	Q12-1501	BAIL SPRING HOLDER	2-12	Q79-4001	SPOOL ASSY
33	Q14-6502	BAIL SPRING COVER	83	Q79-4301	HANDLE ASSY
34	Q34-2901	BAIL SPRING COVER SCREW	<b>PCNMQLT2500D-XH Special Parts</b>		
35	Q60-9705	BAIL ARM	Key No	Part No	Description
36	Q12-1701	BAIL ARM COLLAR	1	Q79-4901	DRAG KNOB
37	Q34-3401	BAIL ARM SCREW	4	J67-8801	ATD DRAG WASHER (3PCS/PK)
38	H69-7701	ROLLER SCREW	5	Q73-2001	EARED WASHER
39	Q62-0901	ROLLER COLLAR (A)	6	J54-9001	KEY WASHER (B)
40	H03-8301	ROLLER BALL BEARING PACKING	2-12	Q79-4701	SPOOL ASSY
41	G68-6903	ROLLER BALL BEARING	10	Q34-5601	LINE STOPPER PLATE
42	H96-0901	ROLLER COLLAR (B)	15	J54-9501	SPOOL METAL
43	G68-6702	LINE ROLLER	21	Q73-5801	ROTOR NUT
44	H96-0801	ROLLER COLLAR (C)	25	Q34-3033	ROTOR
45	Q61-0001	ROLLER COLLAR (D)	26	H41-3601	BAIL TRIP LEVER SPRING
46	Q79-3401	BAIL	27	Q34-3101	BAIL TRIP LEVER
47	G17-1402	SHIELD PLATE SCREW	29	Q34-3301	BAIL SPRING SHAFT
48	J67-5301	SHIELD PLATE	31	J64-2801	BAIL SPRING
49	Q60-9601	SHIELD COVER	33	Q34-3502	BAIL SPRING COVER
50	J63-9901	ONEWAY CLUTCH WASHER	46	Q79-4601	BAIL
51	J38-8402	ONEWAY CLUTCH	58-78	Z70-0629	PINION DRIVE GEAR SET
52	J53-6102	CLUTCH RING	60	G46-6202	PINION BALL BEARING (B)
53	Q60-9001	CLUTCH RING COLLAR	64	Q79-4501	BODY
54	Q19-5701	BEARING PLATE SCREW	65	Q60-9401	REAR COVER PACKING
55	Q62-1201	BEARING PLATE	66	Q60-9503	REAR COVER
56	G46-7302	PINION BALL BEARING (A)	69	Q60-9301	OSCILLATING POST
57	375-8502	PINION BEARING(A) WASHER01mm	70	Q60-8201	MAIN SHAFT
58-78	Z70-0650	PINION DRIVE GEAR SET	71	J64-4701	OSCILLATING GEAR WASHER
59	H93-1701	PINION SPRING WASHER	72	Q60-8101	OSCILLATING GEAR
60	H95-9601	PINION BALL BEARING (B)	73	H77-0601	OSCILLATING GEAR O RING
61	G46-6103	PINION BEARING (B) WASHER01MM	81	J55-3001	SIDE COVER O RING
62	J38-7701	PINION BEARING (B) COLLAR	82	Q60-9110	SIDE COVER (L)
63	Q62-1301	REAR COVER SCREW (A)	83	Q79-5001	HANDLE ASSY
64	Q79-3301	BODY	85	Q60-7901	SET PLATE
65	Q64-3901	REAR COVER PACKING	86	Q60-8001	SET PLATE O RING
66	Q64-4003	REAR COVER			
67	Q62-1101	REAR COVER SCREW (B)			