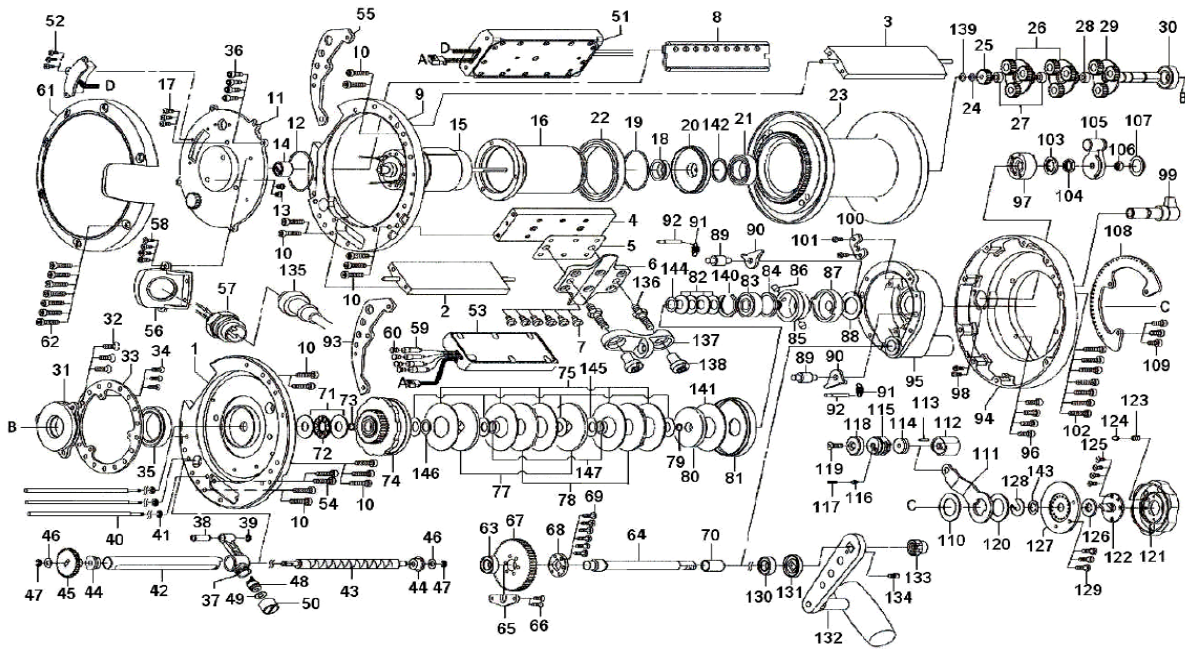




ELECTRONIC REEL

MARINE POWER 3000-12V

Please order by parts number, not key number
 Veuillez indiquer le numéro de la pièce (Non "Key" No.)



| Key No. | Part No. | Part Name | Key No. | Part No. | Part Name | Key No. | Part No. | Part Name |
|---------|----------|---------------------|---------|----------|-------------------------|---------|----------|-------------------------|
| 1 | G43-1401 | SET PLATE | 49 | 373-2700 | WASHER | 97 | G44-1801 | POWER LEVER COLLAR |
| 2 | G43-1501 | PALMING PLATE (A) | 50 | G43-8601 | PAWL CAP | 98 | 351-1106 | SIDE COVER SCREW |
| 3 | G43-1502 | PALMING PLATE (B) | 51 | G43-0604 | IC MODULE | 99 | G44-2001 | CLICK LEVER |
| 4 | G43-1801 | STAND PLATE | 52 | 352-2506 | SCREW | 100 | G44-2401 | CLICK LEVER RETAINER |
| 5 | G44-4401 | STAND PLATE | 53 | G53-4101 | POWER MODULE | 101 | 351-6601 | SCREW |
| 6 | G43-1901 | STAND | 54 | G50-6301 | SCREW | 102 | G50-6201 | SCREW |
| 7 | G43-2001 | STAND SCREW | 55-93 | G43-8901 | IC MODULE PROTECTOR PLT | 103 | F28-5901 | POWER LEVER WASHER |
| 8 | G43-2101 | FINGER GUARD | 56 | G43-9001 | RECEPTACLE HOLDER | 104 | G13-9601 | POWER LEVER NUT A |
| 9 | G43-2201 | L/S RING | 57 | G43-9101 | RECEPTACLE | 105 | G44-2501 | POWER LEVER |
| 10 | G50-6301 | RING PLATE SCREW | 58 | G16-0101 | SCREW | 106 | 342-4004 | POWER LEVER NUT B |
| 11 | G43-2402 | LEFT SET PLATE | 59 | F68-2001 | POWER CORD COVER (A) | 107 | F43-0002 | POWER LEVER COVER |
| 12-19 | F59-5801 | MOTOR CASE O-RING | 60 | F68-2101 | POWER CORD COVER (B) | 108 | G44-3002 | DRAG LEVER PLATE |
| 13 | G43-7701 | MOTOR CORD COVER | 61 | G43-9301 | L/S PLATE | 109 | G43-7401 | SCREW |
| 14 | G43-3901 | MOTOR METAL | 62 | G50-6201 | SIDE PLATE SCREW | 110 | K30-0801 | WASHER |
| 15 | G43-4202 | MOTOR | 63 | G43-9402 | BALL BEARING | 111 | G44-3401 | DRAG LEVER |
| 16 | G43-4701 | MOTOR HOLDER | 64 | G43-9501 | DRIVE SHAFT | 112 | G44-3501 | DRAG LEVER METAL |
| 17 | G43-7401 | SCREW | 65 | G43-9601 | DRIVE SHAFT RETAINER | 113 | G52-0401 | DRAG LEVER METAL PIN |
| 18 | G43-4901 | MOTOR HOLDER SHIELD | 66 | 351-8903 | SCREW | 114 | G44-3601 | DRAG LEVER METAL WASHER |
| 20 | G50-7101 | MOTOR HOLDER PLATE | 67 | G43-9701 | DRIVE GEAR | 115 | G44-3701 | DRAG LEVER COLLAR |
| 21 | G50-1101 | BALL BEARING | 68 | G43-9801 | DRIVE GEAR PLATE | 116 | F28-8001 | PIN |
| 22 | G43-4801 | BALL BEARING | 69 | 351-6413 | SCREW | 117 | G29-4201 | POWER LEVER SPRING |
| 23 | G43-5301 | SPOOL | 70 | G43-9901 | DRIVE SHAFT BUSHING | 118 | G44-3801 | DRAG LEVER CAP |
| 24 | G50-6401 | SPOOL GEAR WASHER | 71 | G44-5601 | WASHER | 119 | G51-5201 | DRAG LEVER SCREW |
| 25 | G43-5801 | SPOOL GEAR (A) | 72 | G44-5701 | DRAG HOLDER BEARING | 120 | K30-0801 | WASHER |
| 26 | G53-7701 | SPOOL GEAR (B) | 73-79 | F65-7801 | O-RING | 121 | G44-4101 | PRE-SET DRAG KNOB |
| 27 | G56-1901 | SPOOL BEAR BUSHING | 74 | G44-0001 | DRAG HOLDER | 122 | G44-4201 | PRE-SET METAL |
| 28 | G56-1801 | SPOOL GEAR BUSHING | 75 | G44-0401 | DRAG WASHER | 123 | K30-2601 | PRE-SET DRAG SPRING |
| 29 | G43-6501 | SPOOL GEAR C | 77 | G44-0601 | KEY WASHER | 124 | K30-2501 | DRAG PIN |
| 30 | G43-6902 | BALL BEARING | 78 | G44-0701 | EARED WASHER | 125 | E13-4503 | SCREW |
| 31 | G43-7001 | SPOOL PLATE | 80 | G44-0901 | DRAG COLLAR | 126 | G44-4001 | PRE-SET METAL WASHER |
| 32 | G43-7101 | SPOOL PLATE SCREW | 81 | G44-0801 | DRAG COLLAR SHIELD | 127 | G44-4301 | COVER PLATE |
| 33 | G43-7201 | CLICK PLATE | 82 | G44-1001 | DRAG SPRING WASHER | 128 | K30-2201 | RETAINER |
| 34 | E29-3001 | SCREW | 83 | B88-7801 | BALL BEARING | 129 | 351-6413 | SCREW |
| 35 | G43-7301 | BALL BEARING | 84 | G56-2301 | ECCENTRICK CAM SCREW | 130 | G43-9402 | BALL BEARING |
| 36 | G43-7401 | SCREW | 85 | G56-2201 | SLEEVE | 131 | G44-4501 | DRIVE SHAFT CAP |
| 37 | G43-7601 | LEVEL WIND | 86 | G50-0701 | ELECTRIC CAM PIN | 132 | G51-6601 | HANDLE |
| 38 | G43-7801 | LEVEL WIND COLLAR | 87 | G44-1101 | ECCENTRICK CAM | 133 | G44-5101 | HANDLE NUT |
| 39 | F67-3501 | RETAINER | 88 | K30-0801 | WASHER | 134 | G21-8201 | SCREW |
| 40 | G43-8001 | LEVEL WIND POST | 89 | G44-1201 | A/R PAWL PIN | 135 | F04-2805 | POWER CORD |
| 41 | G27-0601 | RETAINER | 90 | G44-1301 | A/R PAWL | 136 | G44-5301 | CLAMP BOLT |
| 42 | G43-8101 | WORM SHIELD | 91 | G44-1401 | A/R PAWL SPRING | 137 | K30-9201 | ROD CLAMP |
| 43 | G43-8201 | WORM SHAFT | 92 | G44-1501 | A/R PAWL SPRING PIN | 138 | G44-5401 | CLAMP NUT |
| 44 | G43-8301 | WORM SHAFT BUSHING | 94 | G44-1601 | R/S PLATE | 139 | 375-3000 | WASHER |
| 45 | G43-8401 | WORM SHAFT GEAR | 95 | G44-1701 | SID PLATE SCREW | 140 | G56-2401 | DRAG RING |
| 46 | 373-2702 | WASHER | 96 | G43-2001 | STAND SCREW | 141 | G56-2001 | DRAG COLLAR WASHER |
| 47 | 320-1402 | RETAINER | | | | | | |
| 48 | G43-8501 | LINE GUIDE PAWL | | | | | | |