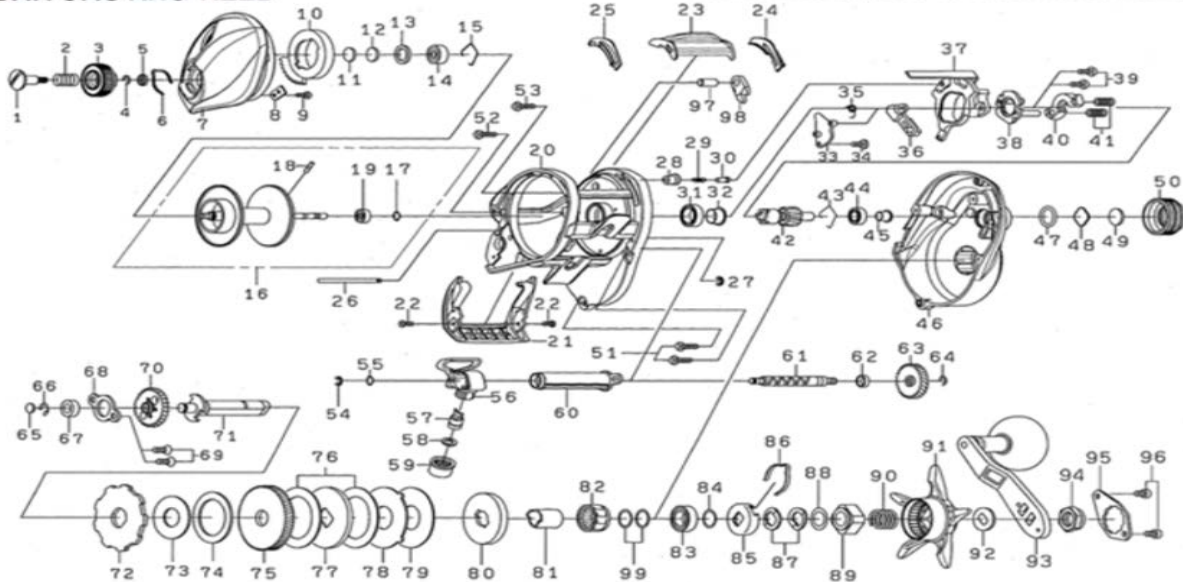


BAITCASTING REEL

LX-TW300-P_H-P_XH-P

*Please order by parts number, not key number.



Key No	Part No	Description
1	J71-6301	BRAKE DIAL SCREW
2	E16-7101	BRAKE DIAL SPRING
3	J93-5801	BRAKE DIAL
4	B33-9801	BRAKE DIAL RETAINER(A)
5	F63-7701	BRAKE DIAL WASHER
6	J93-5901	BRAKE CLICK SPRING
7	J97-5103	LEFT SIDE PLATE
8	J94-6901	BRAKE DIAL RETAINER(B)
9	G93-9301	BRAKE DIAL RETAINER(B) SCREW
10	J97-4501	MAGNET HOLDER
11	375-7404	LS BEARING WASHER (A)
12	375-7411	LS BEARING WASHER (B)
14	G51-1501	LS BALL BEARING
15	F03-2201	LS BEARING RING
16	M16-7401	SPOOL ASSY (16 TO 19)
20	M16-7001	FRAME
21	J93-5502	FRONT COVER
22	H53-1511	FRONT COVER SCREW
23	J93-3101	CLUTCH LEVER
24	J93-2501	CLUTCH LEVER PLATE (R)
25	J93-2601	CLUTCH LEVER PLATE (L)
26	J93-5601	OSCILLATING POST
27	H70-4101	OSCILLATING POST RETAINER
28	H91-0601	CLUTCH CAM PLATE PIN SPRING COLLAR
29	H92-8801	CLUTCH CAM PLATE PIN SPRING
30	J05-5201	CLUTCH CAM PLATE PIN
31	G15-6803	CLUTCH CAM BALL BEARING
32	J94-6501	CLUTCH CAM BEARING COLLAR
33	J93-3001	KICK LEVER PLATE (A)
34	H29-4101	KICK LEVER PLATE (A) SCREW
35	H45-0001	KICK LEVER SPRING
36	J93-3201	KICK LEVER
37	J97-3701	CLUTCH CAM
38	J93-2901	CLUTCH CAM PLATE
39	B03-2904	CLUTCH CAM SCREW
40	M10-5701	CLUTCH PLATE
41	J97-7701	CLUTCH SPRING
42	M18-4102	PINION GEAR
43	H16-0801	BEARING RETAINER(B)
44	G46-7101	PINION BALL BEARING
45	J95-3001	PINION BEARING COLLAR
46	M16-6803	RIGHT SIDE PLATE
47	B05-5201	ZERO ADJUSTE KNOB RING
48	J69-2001	ZERO ADJUSTE WASHER (A)
49	B17-5503	ZERO ADJUSTE WASHER (B)
50	J93-2303	ZERO ADJUSTE KNOB
51	G04-0830	RIGHT SIDE PLATE SCREW(A)
52	G94-5819	RIGHT SIDE PLATE SCREW(B)
53	G04-0832	RIGHT SIDE PLATE SCREW(C)
54	320-5901	WORM SHAFT RETAINER(A)
55	B41-1702	WORM SHAFT WASHER(0.1MM)
56	J97-3801	LEVEL WIND
57	121-4212	PAWL

Key No	Part No	Description
58	373-1303	PAWL WASHER
59	F40-2801	PAWL HOLDER NUT
60	J93-4301	WORM SHIELD
61	J93-4101	WORM SHAFT
62	G46-9001	WORM SHAFT BALL BEARING
63	J93-4201	WORM SHAFT GEAR
65	G09-9801	GEAR SHAFT WASHER(0.1MM)
66	320-8002	GEAR SHAFT RETAINER
67	J93-3401	GEAR SHAFT COLLAR
68	M04-0001	GEAR SHAFT PLATE
69	G80-3505	GEAR SHAFT PLATE SCREW
70	J93-3501	DRIVE SHAFT GEAR
71	J93-3301	DRIVE SHAFT
72	J93-4401	RATCHET
73	H66-1101	DRIVE GEAR WASHER(A)
74	H35-9001	DRIVE GEAR WASHER(B)
75	M12-3602	DRIVE GEAR
76	J93-4701	DRAG WASHER
77	J93-4801	DRAG DISC WASHER
78	J93-4901	DRAG LIP WASHER
79	J97-4301	DRAG WASHER(B)
80	J93-5001	DRAG DISC WASHER(B)
81	J37-7801	CLUTCH RING
82	G81-9801	ONEWAY CLUTCH
83	G43-1002	HANDLE BALL BEARING
84	B55-3801	HANDLE BALL BEARING WASHER
85	E70-9201	DRAG HOLDER
86	E71-5601	DRAG HOLDER LEAF SPRING
87	150-8901	DRAG SPRING WASHER
88	H92-9501	STAR DRAG WASHER
89	J93-5101	DRAG NUT
90	J01-1901	DRAG NUT SPRING
91	J97-5002	STAR DRAG
92	J10-1302	HANDLE WAHSER
93	M16-7801	HANDLE ASSY
94	J09-0311	HANDLE NUT
95	M09-6501	HANDLE LOCK PLATE
96	H25-7004	HANDLE LOCK PLATE SCREW
97	J94-6701	STOPPER PIN
98	H27-0401	STOPPER
99	B55-3802	HANDLE BEARING WASHER

LX-TW300H-P Special Parts

Key No	Description
42	M18-4002 PINION GEAR
46	M16-6801 RIGHT SIDE PLATE
75	M12-3202 DRIVE GEAR

LX-TW300XH-P Special Parts

Key No	Description
42	M18-4202 PINION GEAR
46	M16-6802 RIGHT SIDE PLATE
75	M12-3402 DRIVE GEAR