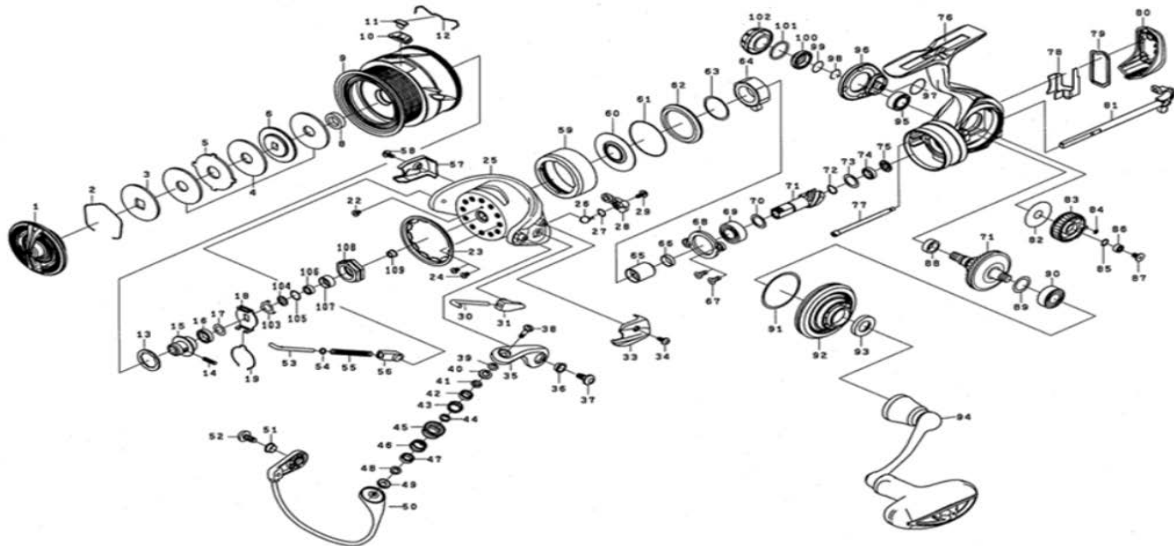


# DAIWA SPINNING REEL

## LUVIASLT3000D/4000D-C

\*Please order by parts number, not key number.



Key No	Part No	Description
1	J54-7201	DRAG KNOB
2	J54-7101	DRAG RING
3	J54-7001	DRAG DISC WASHER (A)
4	J54-6801	DRAG WASHER
5	J54-9001	DRAG LIP WASHER
6	J54-6902	DRAG DISC WASHER (B)
8	J54-6701	SPOOL COLLAR
2~12	J98-1401	SPOOL ASSY ( 2-12)
10	J55-8101	LINE STOPPER
11	J55-8001	LINE STOPPER PLATE
12	J31-4801	LINE STOPPER SPRING
13	J54-6301	SPOOL WASHER ( A )
14	J55-8201	SPOOL METAL SCREW
15	J54-9501	SPOOL METAL
16	H62-4801	SPOOL METAL COLLAR
17	J60-2201	SPOOL WASHER ( B )
18	M02-1401	CLICK HOLDER
19	H41-6101	CLICK LEAF SPRING
20	H98-6901	ROTOR NUT PACKING
21	H96-1101	ROTOR NUT
22	H02-2701	ROTOR NUT SCREW
23	J25-7101	ROTOR COVER
25	J25-4307	ROTOR
26	J43-5201	KICK LEVER SPRING
27	J33-9502	KICK LEVER WASHER
28	J25-4401	KICK LEVER ASSY
29	H41-7701	KICK LEVER SCREW
30	J25-4601	ARM LEVER SHAFT
31	J25-4701	ARM LEVER SHAFT HOLDER
33	J25-5101	ARM LEVER SPRING COVER
34	J25-5201	COVER SCREW
35	J25-4807	ARM LEVER
36	J25-4901	ARM LEVER SCREW COLLAR
37	J25-5001	ARM LEVER SCREW
38	J25-7001	ROLLER SCREW
39	F89-7101	ROLLER WASHER
40,49	J73-6201	ROLLER COLLAR PACKING
41,48	J53-0401	ROLLER COLLAR (A)
42,47	J25-6702	ROLLER BALLBEARING
43,46	J53-0501	ROLLER COLLAR (B)
44	J25-6301	ROLLER COLLAR (C)
45	J25-6501	LINE ROLLER
50	J89-1101	BAIL ASSY
53	G47-1803	BAIL SPRING SHAFT
54	G68-5401	BAIL SPRING SHAFT WASHER
55	J25-5301	BAIL SPRING
56	G47-1602	BAIL SPRING SHAFT HOLDER
57	J25-5901	BAIL HOLDER COVER
59	J77-7901	MAGSEALED CAP
60	J77-7601	MAGSEALED PLATE
61	J79-1001	MAGSEALED PLATE"O"RING
62	J77-7802	MAGSEALED PLATE COLLAR
63	J63-9901	MAGSEALED PLATE WASHER
64	J77-6101	ONEWAY CLUTCH
65	J53-6102	CLUTCH RING
66	J53-6202	CLUTCH RING COLLAR

Key No	Part No	Description
67	G99-7301	PINION BEARING PLATE SCREW
68	J77-8201	PINION BALLBEARING PLATE
69	G27-9602	PINION BALLBEARING (A)
70	375-8502	PINION BALLBEARING (A)WASHER
71	Z02-5394	PINION + DRIVE GEAR SET
72	H81-4901	PINION BALLBEARING (B)SP WASHER
73	E09-6501	PINION BALLBEARING (B) WASHER
74	G53-8007	PINION BALLBEARING (B)
75	J55-2001	PINION BALLBEARING COLLAR
76	J90-3801	BODY
77	J77-7203	REAR CAP SCREW
78	M04-0101	REAR CAP COVER
79	J90-4901	REAR CAP PACKING
80	J90-5001	REAR CAP
81	J98-3801	MAIN SHAFT
82	J55-1401	OSCILLATING GEAR WASHER
83	J61-8501	OSCILLATING GEAR
84	G86-9601	OSCILLATING GEAR O-RING
85	H12-9201	OSCILLATING GEAR BALL BEARING WASHER
86	G68-6904	OSCILLATING GEAR BALL BEARING
87	G99-7001	OSCILLATING GEAR SCREW
88	J55-2701	DRIVEGEAR RING
89	E15-4803	DRIVE BEARING (B) WASHER
90	G46-7302	DRIVE BEARING (B)
91	J57-1501	ENGINEPLATE"O"RING
92	J90-4804	ENGINEPLATE
93	H86-6201	HANDLE PACKING
94	J98-3101	HANDLE ASSY
95	G52-2706	DRIVE BEARING (A)
96	J90-3901	SET PLATE
97	H81-6401	SET PLATE"O"RING
98	G47-2401	DRIVE BEARING (A) RETAINER
99	H25-5001	DRIVE BEARING (A) COVER"O"RING
100	J90-4701	DRIVE BEARING (A) COVER
101	G39-9702	HANDLE CAP"O"RING
102	J77-8101	HANDLE CAP

### LUVIASLT4000D-C Special Parts

Key No	Part No	Description
1	J69-8701	DRAG KNOB
5	J54-9002	DRAG LIP WASHER
2~12	J98-3501	SPOOL ASSY ( 2-12)
10	J56-8601	LINE STOPPER
23	J28-4001	ROTOR COVER
25	J57-1903	ROTOR
28	J57-2001	KICK LEVER ASSY
30	J26-2601	ARM LEVER SHAFT
31	J26-2701	ARM LEVER SHAFT HOLDER
33	J57-2202	ARM LEVER SPRING COVER
50	J90-3401	BAIL ASSY
53	G29-8201	BAIL SPRING SHAFT
55	G94-4501	BAIL SPRING
57	J57-2702	BAIL HOLDER COVER
81	J90-4001	MAIN SHAFT
83	J57-0401	OSCILLATING GEAR