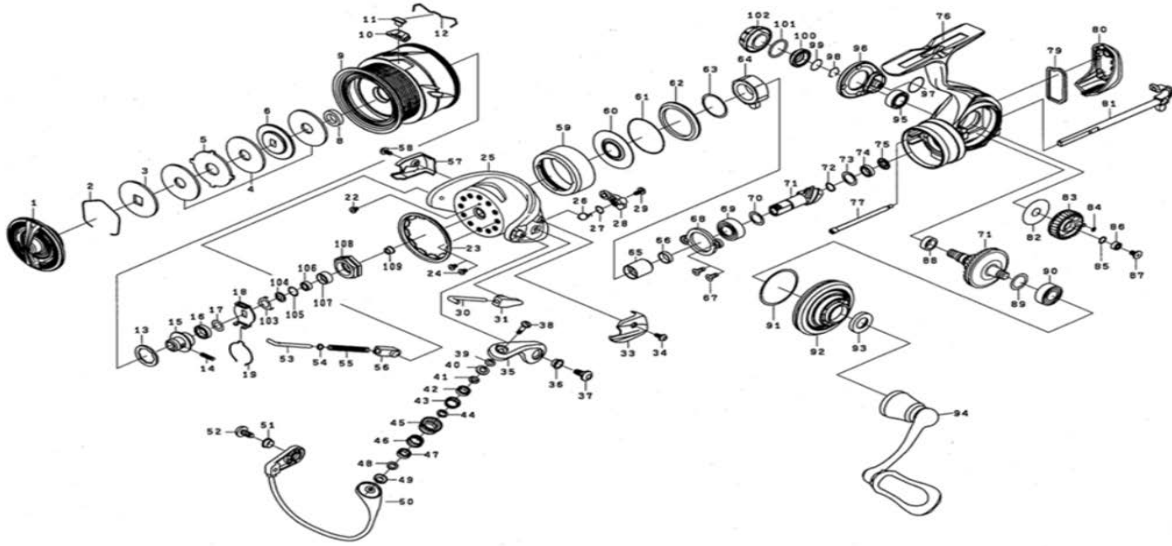


DYMA

SPINNING REEL

LUVIASLT2500D

*Please order by parts number, not key number.



Key No	Part No	Description	Key No	Part No	Description
1	J54-7201	DRAG KNOB	55	G68-5301	BAIL SPRING
2	J54-7101	DRAG RING	56	G47-1601	BAIL SPRING SHAFT HOLDER
3	J54-7001	DRAG DISC WASHER (A)	57	J53-7702	BAIL HOLDER COVER
4	J54-6801	DRAG WASHER	58	J25-5201	BAIL HOLDER COVER SCREW
5	J54-6902	DRAG LIP WASHER	59	J77-7901	MAGSEALED CAP
6	J54-9001	DRAG DISC WASHER (B)	60	J77-7601	MAGSEALED PLATE
8	J54-6701	SPOOL COLLAR	61	J79-1001	MAGSEALED PLATE "O"RING
2~12	J98-2201	SPOOL ASSY (2-12)	62	J77-7802	MAGSEALED PLATE COLLAR
10	J55-8101	LINE STOPPER	63	J63-9901	MAGSEALED PLATE WASHER
11	J55-8001	LINE STOPPER PLATE	64	J77-6101	ONEWAY CLUTCH
12	J31-4801	LINE STOPPER SPRING	65	J53-6102	CLUTCH RING
13	J54-6301	SPOOL WASHER (A)	66	J53-6204	CLUTCH RING COLLAR
14	J55-8201	SPOOL METAL SCREW	67	G99-7301	PINION BEARING PLATE SCREW
15	J54-9501	SPOOL METAL	68	J77-8201	PINION BALLBEARING PLATE
16	H62-4801	SPOOL METAL COLLAR	69	G27-9603	PINION BALLBEARING (A)
17	J60-2201	SPOOL WASHER (B)	70	375-8502	PINION BALLBEARING (A)WASHER
18	M02-1401	CLICK HOLDER	71	Z02-5390	PINION + DRIVE GEAR SET
19	H41-6101	CLICK LEAF SPRING	72	H81-4901	PINION BALLBEARING (B)SP WASHER
20	H98-6901	ROTOR NUT PACKING	73	E09-6501	PINION BALLBEARING (B) WASHER
21	H96-1101	ROTOR NUT	74	G53-8007	PINION BALLBEARING (B)
22	H02-2701	ROTOR NUT SCREW	75	J55-2001	PINION BALLBEARING COLLAR
23	J53-8101	ROTOR COVER	76	J85-2402	BODY
24	H02-2701	ROTOR COVER SCREW	77	J77-7202	REAR CAP SCREW
25	J53-6802	ROTOR	79	J77-7301	REAR CAP PACKING
26	J43-5201	KICK LEVER SPRING	80	J85-3201	REAR CAP
27	J33-9502	KICK LEVER WASHER	81	J85-2501	MAIN SHAFT
28	J53-6901	KICK LEVER ASSY	82	J55-1401	OSCILLATING GEAR WASHER
29	H41-7701	KICK LEVER SCREW	83	J55-1501	OSCILLATING GEAR
30	J25-4601	ARM LEVER SHAFT	84	G86-9601	OSCILLATING GEAR O-RING
31	J25-4701	ARM LEVER SHAFT HOLDER	85	H12-9201	OSCILLATING GEAR BALL BEARING WASHER
33	J53-7102	ARM LEVER SPRING COVER	86	G68-6904	OSCILLATING GEAR BALL BEARING
34	J25-5201	COVER SCREW	87	G99-7001	OSCILLATING GEAR SCREW
35	J25-4807	ARM LEVER	88	J55-2701	DRIVEGEAR RING
36	J25-4901	ARM LEVER SCREW COLLAR	89	E15-4803	DRIVE BEARING (B) WASHER
37	J25-5001	ARM LEVER SCREW	90	G46-7302	DRIVE BEARING (B)
38	J25-7001	ROLLER SCREW	91	J55-3001	ENGINEPLATE "O"RING
39	F89-7101	ROLLER WASHER	92	J85-3105	ENGINEPLATE
40,49	J73-6201	ROLLER COLLAR PACKING	93	H86-6201	HANDLE PACKING
41,48	J53-0401	ROLLER COLLAR (A)	94	J92-4201	HANDLE ASSY
42,47	J25-6702	ROLLER BALLBEARING	95	G52-2706	DRIVE BEARING (A)
43,46	J53-0501	ROLLER COLLAR (B)	96	J77-6001	SET PLATE
44	J25-6301	ROLLER COLLAR (C)	97	H81-6401	SET PLATE "O"RING
45	J25-6501	LINE ROLLER	98	G47-2401	DRIVE BEARING (A) RETAINER
50	J89-0701	BAIL ASSY	99	H25-5001	DRIVE BEARING (A) COVER "O"RING
51	J25-4901	BAIL HOLDRE SCREW COLLAR	100	J77-7001	DRIVE BEARING (A) COVER
52	J25-5001	BAIL HOLDRE SCREW	101	G39-9702	HANDLE CAP "O"RING
53	G47-1803	BAIL SPRING SHAFT	102	J77-8101	HANDLE CAP
54	G68-5401	BAIL SPRING SHAFT WASHER			