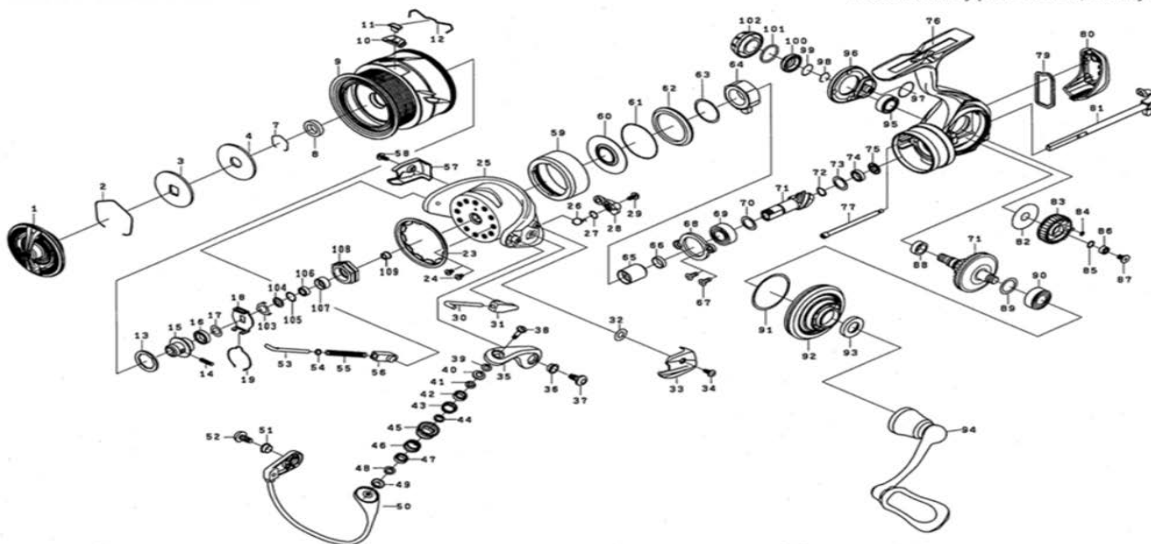


DAIWA SPINNING REEL

LUVIASLT1000D/2000D

*Please order by parts number, not key number.



Key No	Part No	Description
1	6J560501	DRAG KNOB
2	6J547101	DRAG RING
3	6J547001	DRAG DISC WASHER
4	6J546801	DRAG WASHER
7	6B358701	BEARING RETAINER
8	6J546701	SPOOL COLLAR
2~12	6J977401	SPOOL ASSY (2-12)
10	6J563601	LINE STOPPER
11	6J558001	LINE STOPPER PLATE
12	6J314801	LINE STOPPER SPRING
13	6J546301	SPOOL WASHER (A)
14	6J558201	SPOOL METAL SCREW
15	6J564101	SPOOL METAL
16	6H624801	SPOOL METAL COLLAR
17	6J602201	SPOOL WASHER (B)
18	6M021401	CLICK HOLDER
19	6H416101	CLICK LEAF SPRING
20	6H986901	ROTOR NUT PACKING
21	6H961101	ROTOR NUT
23	6J287401	ROTOR COVER
24	6H022701	ROTOR COVER SCREW
25	6J286707	ROTOR
26	6J435101	KICK LEVER SPRING
27	6J339502	KICK LEVER WASHER
28	6J304701	KICK LEVER ASSY
29	6H417701	KICK LEVER SCREW
30	6J254601	ARM LEVER SHAFT
31	6J254701	ARM LEVER SHAFT HOLDER
32	6F306402	WASHER
33	6J287001	ARM LEVER SPRING COVER
34	6J255201	COVER SCREW
35	6J254807	ARM LEVER
36	6J254901	ARM LEVER SCREW COLLAR
37	6J255001	ARM LEVER SCREW
38	6J257001	ROLLER SCREW
39	6F897101	ROLLER WASHER
40,49	6J736201	ROLLER COLLAR PACKING
41,48	6J530401	ROLLER COLLAR (A)
42,47	6J256702	ROLLER BALLBEARING
43,46	6J530501	ROLLER COLLAR (B)
44	6J256301	ROLLER COLLAR (C)
45	6J256501	LINE ROLLER
50	6J908801	BAIL ASSY
53	6G471803	BAIL SPRING SHAFT
54	6G685401	BAIL SPRING SHAFT WASHER
55	6J304801	BAIL SPRING
56	6G471601	BAIL SPRING SHAFT HOLDER

Key No	Part No	Description
57	6J287301	BAIL HOLDER COVER
59	6J777901	MAGSEALED CAP
60	6J777601	MAGSEALED PLATE
61	6J791001	MAGSEALED PLATE"O"RING
62	6J777802	MAGSEALED PLATE COLLAR
63	6J639901	MAGSEALED PLATE WASHER
64	6J776101	ONEWAY CLUTCH
65	6J536102	CLUTCH RING
66	6J536204	CLUTCH RING COLLAR
67	6G997301	PINION BEARING PLATE SCREW
68	6J778201	PINION BALLBEARING PLATE
69	6G279603	PINION BALLBEARING (A)
70	6.4E+07	PINION BALLBEARING (A)WASHER
71	6Z025181	PINION + DRIVE GEAR SET
72	6H814901	PINION BALLBEARING (B)SP WASHER
73	6E096501	PINION BALLBEARING (B) WASHER
74	6G466202	PINION BALLBEARING (B)
75	6J588201	PINION BALLBEARING COLLAR
76	6J775901	BODY
77	6M009501	REAR CAP SCREW
79	6J777301	REAR CAP PACKING
80	6J777401	REAR CAP
81	6J945801	MAIN SHAFT
82	6J551401	OSCILLATING GEAR WASHER
83	6J551501	OSCILLATING GEAR
84	6G869601	OSCILLATING GEAR O-RING
85	6H129201	OSCILLATING GEAR BALL BEARING WASHER
86	6G686904	OSCILLATING GEAR BALL BEARING
87	6G997001	OSCILLATING GEAR SCREW
88	6J552701	DRIVEGEAR RING
89	6E154803	DRIVE BEARING (B) WASHER
90	6G522706	DRIVE BEARING (B)
91	6J588801	ENGINEPLATE "O"RING
92	6J777109	ENGINEPLATE
93	6H866201	HANDLE PACKING
94	6J958501	HANDLE ASSY
96	6J776001	SET PLATE
97	6H816401	SET PLATE"O"RING
98	6G472401	DRIVE BEARING (A) RETAINER
99	6H255001	DRIVE BEARING (A) COVER"O"RING
100	6J777001	DRIVE BEARING (A) COVER
101	6G399702	HANDLE CAP"O"RING
102	6J778101	HANDLE CAP

LUVIASLT2000D Special Parts

Key No	Part No	Description
2~12	6J977201	SPOOL ASSY (2-12)