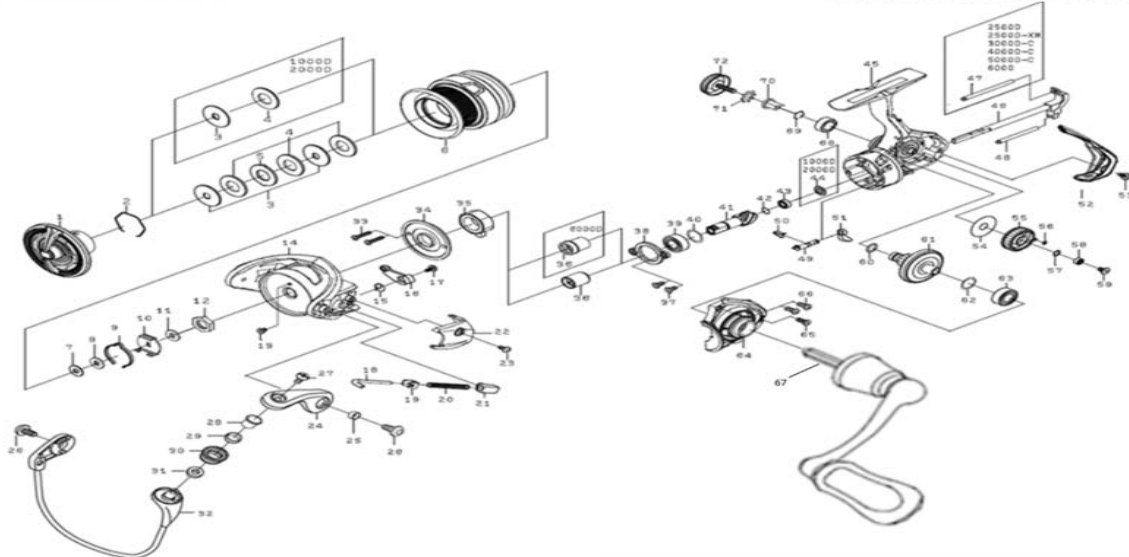


DAIWA SPINNING REEL

LEGLT1000D_2000D

*Please order by parts number, not key number.



Key No	Part No	Description	Key No	Part No	Description
1	Q37-6801	DRAG KNOB	37	Q12-6201	PINION BEARING PLATE SCREW
2	Q34-6101	DRAG RING	38	Q19-5601	PINION BEARING PLATE
3	Q62-1901	DRAG DISC WASHER	39	G46-7302	PINION BALL BEARING(A)
4	J54-6801	DRAG WAHSER	40	375-8502	PINION BALL BEARING(A) WASHER
5	-----	DRAG LIP WASHER	41	Q37-5701	PINION GEAR
2~6	Q68-8801	SPOOL ASSY (2-6)	42	H93-1701	PINION BALL BEARING(B) SPRING WASHER
7	E39-8003	SPOOL WASHER (A)	43	H95-9601	PINION BALL BEARING(B)
8	Q34-8502	SPOOL WASHER (B)	44	J38-7701	PINION BALL BEARING(B) COLLAR
9	H41-6101	CLICK LEAF SPRING	45	Q68-8601	BODY
10	M02-1401	CLICK HOLDER	46	Q37-5301	MAIN SHAFT
11	Q34-4001	CLICK HOLDER WASHER	48	Q11-9104	OSCILLATING POST(B)
12	Q12-2401	ROTOR NUT	49	Q11-8101	STOPPER CAM
13	H02-2701	ROTOR NUT SCREW	50	H69-7801	STOPPER LEVER SPRING
14	Q13-9531	ROTOR	51	Q11-8001	STOPPER LEVER
15	H44-3301	KICK LEVER SPRING	52	Q62-6501	REAR COVER
16	Q13-9601	KICK LEVER	54	H60-7902	OSCILLATING GEAR WASHER
17	H41-7701	KICK LEVER SCREW	55	Q37-5201	OSCILLATING GEAR
18	Q13-9801	ARMLIVER SHAFT	56	H77-0601	OSCILLATING GEAR O-RING
19	H57-6101	ARMLIVER SHAFT PLATE	57	H12-9201	OSCILLATING GEAR BEARING WASHER
20	H44-2401	ARMLIVER SPRING	58	G46-9005	OSCILLATING GEAR BALL BEARING
21	Q12-1501	ARMLIVER SPRING HOLDER	59	Q12-6101	OSCILLATING GEAR SCREW
22	Q14-6501	ARMLIVER SPRING COVER	60	G67-0501	DRIVE GEAR O-RING
23	Q34-2901	ARMLIVER SPRING COVER SCREW	61	Q37-5901	DRIVE GEAR
24	Q12-1622	ARMLIVER	64	Q68-8701	BODY COVER
25	Q12-1701	ARMLIVER SCREW COLLER	65	Q34-2701	BODY COVER SCREW (A)
26	Q34-3401	ARMLIVER SCREW	66	Q34-2601	BODY COVER SCREW 67
27	G19-5602	ROLLER SCREW	67	Q69-0101	HANDLE ASSY
28	G19-5501	ROLLER COLLAR (A)	68	G52-2706	DRIVE BALL BEARING(B)
29	G22-0701	ROLLER COLLAR (B)	69	G47-2401	DRIVE BEARING RETAINER
30	J08-9902	LINE ROLLER	70	F72-1001	HANDLE SCREW COLLAR
31	Q20-3401	ROLLER COLLAR (C)	71	160-8401	HANDLE SCREW WASHER
32	Q13-9901	BAIL ASSY	72	Q13-2401	HANDLE SCREW
33	G83-7101	SEALED PLATE SCREW			
34	Q13-9401	SEALED PLATE			
35	Q30-8301	ONEWAY CLUTCH			
36	J00-1401	CLUTCH RING			

LEGLT2000D Special Parts		
Key No	Part No	Description
2~6	Q68-9101	SPOOL ASSY (2-6)