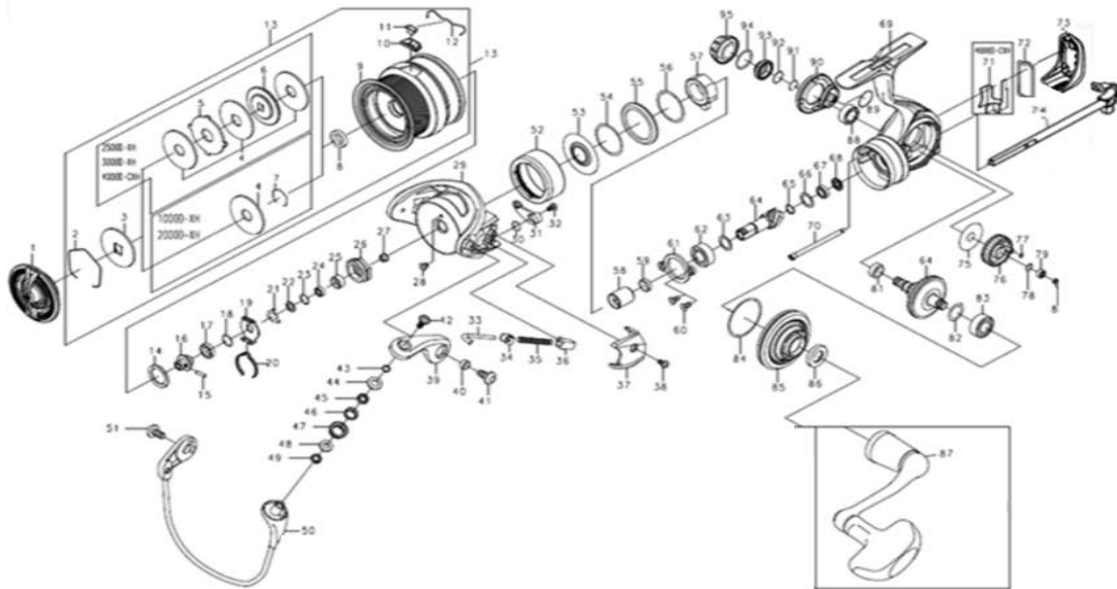


DAIWA SPINNING REEL

KGMQLT3000D-XH_4000D-CXH

*Please order by parts number, not key number.



Key No	Part No	Description
1	J54-7201	DRAG KNOB
2	J54-7101	DRAG RING
3	J54-7001	DRAG DISC WASHER
4	J54-6801	DRAG WASHER
5	J54-6902	DRAG LIP WASHER
6	J54-9001	DRAG DISC WASHER
7	---	---
8	J54-6701	DRAG COLLAR
9	---	---
10	J55-8101	LINE STOPPER PLATE
11	J55-8001	LINE STOPPER
12	J31-4801	LINE STOPPER SPRING
13	M09-8801	SPOOL ASSY
14	J54-6304	SPOOL WASHER
15	J55-8201	SPOOL METAL SCREW
16	J54-9501	SPOOL METAL
17	H62-4801	SPOOL METAL COLLAR
18	J60-2201	CLICK HOLDER WASHER
19	M02-1401	CLICK HOLDER
20	H41-6101	CLICK LEAF SPRING
21	G47-1501	ROTOR NUT PLATE
22	J72-9101	ROTOR NUT PACKING
23	375-5202	ROTOR NUT WASHER
24	G46-6205	ROTOR NUT BALL BEARING
25	M10-1801	ROTOR NUT COLLAR (A)
26	J25-3001	ROTOR NUT
27	J80-8500	ROTOR NUT SCREW (B)
28	H02-2701	ROTOR NUT SCREW
29	H96-0048	ROTOR
30	H41-3601	KICK LEVER SPRING
31	J03-8501	KICK LEVER ASSY
32	H41-7701	KICK LEVER SCREW
33	H41-4101	ARM LEVER SHAFT
34	H57-6101	ARM LEVER SHAFT PLATE
35	H54-5701	ARM LEVER SHAFT SPRING
36	H41-4301	ARM LEVER SHAFT HOLDER
37	H96-0201	ARM LEVER SP COVER
38	H43-1301	ARM LEVER SP COVER SCREW
39	H96-0102	ARM LEVER
40	H96-2401	ARM LEVER COLLAR
41	H43-1201	ARM LEVER SCREW
42	H69-7701	ROLLER SCREW
43	H96-1001	ROLLER COLLAR (A)
44	H03-8301	ROLLER BEARING PCKING
45	G68-6903	ROLLER BALL BEARING
46	H96-0901	ROLLER BEARING COLLAR
47	G68-6703	LINE ROLLER
48	H96-0801	ROLLER COLLAR (B)
49	H96-0701	ROLLER COLLAR (C)
50	J55-9101	BAIL ASSY
51	H43-1201	BAIL HOLDER SCREW
52	J77-7904	SEALED CAP
53	J77-7601	MAGSEALED
54	J79-1001	MAGSEALED O RING
55	J77-7802	MAGSEALED COLLAR
56	J63-9901	ONEWAY CLUTCH WASHER (0.05)

Key No	Part No	Description
57	J38-8402	ONEWAY CLUTCH
58	J53-6102	CLUTCH RING
59	J53-6202	PINION BEARING COLLAR
60	G99-7301	PINION BEARING PLATE SCREW
61	M09-4001	PINION BEARING PLATE
62	G27-9602	PINION BALL BEARING (A)
63	375-8502	PINION BEARING WASHER(A)
64	202-5880	PINION DRIVE GEAR SET
65	H81-4902	PINION SPRING WASHER(B)
66	E09-6501	PINION WASHER(C)
67	G53-8007	PINION BALL BEARING (B)
68	J55-2001	PINION COLLAR
69	M09-8701	BODY ASSY
70	J77-7203	REAR CAP SCREW
71	M04-0101	-
72	J90-4901	REAR CAP PACKING
73	J90-5001	REAR CAP
74	J98-3801	MAIN SHAFT
75	J55-1401	OSCILLATING GEAR WASHER
76	J61-8501	OSCILLATING GEAR
77	G86-9601	OSCILLATING GEAR ORING
78	H12-9201	OSCILLATING BEARING WASHER
79	G68-6904	OSCILLATING BALL BEARING
80	G99-7001	OSCILLATING SCREW
81	J55-2701	DRIVE GEAR ORING
82	375-8502	DRIVE WASHER
83	G46-7302	DRIVE BALL BEARING (A)
84	J57-1501	BODY COVER O RING
85	J90-4806	BODY COVER(A)(L)
86	H86-6201	HANDLE PACKING
87	M09-8901	HANDLE ASSY
88	G52-2706	DRIVE GEAR BALL BEARING (B)
89	H81-6401	SET PLATE O RING
90	J90-3901	SET PLATE
91	G47-2401	DRIVE BEARING RING
92	H25-5001	HANDLE CAP O RING
93	J90-4701	BODY COVER(A)(R)
94	G39-9702	HANDLE CAP O RING
95	J77-8101	HANDLE CAP

KGMQLT4000D-CXH Special Parts		
Key No	Part No	Description
1	J69-8701	DRAG KNOB
6	J54-9002	DRAG DISC WASHER
10	J56-8601	LINE STOPPER PLATE
13	M09-9201	SPOOL ASSY
29	J56-7503	ROTOR
31	J56-7601	KICK LEVER ASSY
33	H57-2001	ARM LEVER SHAFT
35	H41-4201	ARM LEVER SHAFT SPRING
36	J08-9401	ARM LEVER SHAFT HOLDER
37	J56-7801	ARM LEVER SP COVER
50	J56-7901	BAIL ASSY
74	J90-4001	MAIN SHAFT
76	J57-0401	OSCILLATING GEAR