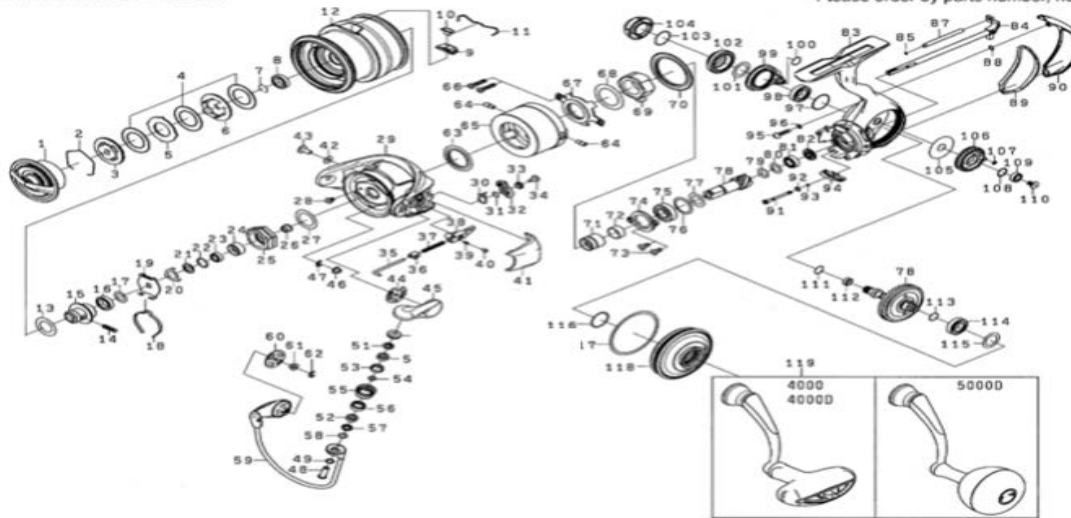


DAWA SPINNING REEL

EXIGLT4000D_5000D-C

*Please order by parts number, not key number.



Key No	Part No	Description
1	M24-9001	DRAG KNOB
2	J55-6701	DRAG WASHER RETAINER
3	J55-6601	KEY WASHER (A)
4	M35-9001	ATD DRAG WASHER (3PCS/PK)
5	J56-1201	EARED WASHER
6	J55-6501	KEY WASHER (B)
7	B35-8702	BEARING RETAINER
8	G21-2503	SPOOL BALL BEARING
9	J56-8601	LINE STOPPER PLATE
10	J55-8001	LINE STOPPER
11	J31-4801	LINE STOPPER SPRING
2 12	M29-7501	SPOOL ASSY (2 12)
13	J54-6304	SPOOL METAL WASHER
14	J55-8201	SPOOL METAL SCREW
15	J54-9501	SPOOL METAL
16	G52-2705	SPOOL METAL BALL BEARING
17	J60-2201	SPOOL WASHER
18	H41-6101	CLICK LEAF SPRING
19	M02-1401	CLICK SPRING HOLDER
20	G47-1501	ROTOR NUT PLATE
21	J72-9101	ROTOR NUT PACKING
22	375-5202	ROTOR NUT BEARING WASHER
23	H95-9602	ROTOR NUT BALL BEARING
24	J69-0201	ROTOR NUT BEARING COLLAR
25	J25-3001	ROTOR NUT
26	J80-8501	ROTOR NUT COLLAR
27	371-2836	ROTOR NUT WASHER
28	H02-2701	ROTOR NUT SCREW
29	M24-7302	ROTOR
30	M19-4501	BAIL TRIP LEVER SPRING
31	M19-4601	BAIL TRIP LEVER WASHER
32	M24-7601	BAIL TRIP LEVER
33	M19-6401	BAIL TRIP LEVER COLLAR
34	H02-2702	BAIL TRIP LEVER SCREW
35	M24-7801	BAIL SPRING SHAFT
36	M19-5001	BAIL SPRING SHAFT COLLAR
37	G94-4501	BAIL SPRING
38	M24-7901	BAIL SPRING HOLDER
39	M19-5301	BAIL SPRING HOLDER SPRING
40	M19-5401	BAIL SPRING HOLDER PIN
41	M24-8101	BAIL SPRING COVER
42	G25-6401	BAIL SPRING COVER WASHER
43	M35-5601	BAIL SPRING COVER SCREW
44	M19-5901	BAIL ARM PLATE
45	M24-8001	BAIL ARM
46	M19-5801	BAIL ARM COLLAR
47	B33-9801	BAIL ARM RETAINER
48	M19-6801	ROLLER SCREW
49	M29-1901	ROLLER SCREW WASHER
50	J53-8001	ROLLAR COLLAR (A)
51	J53-8401	ROLLAR MAG COLLAR (A)
52	J25-6702	ROLLAR BALL BEARING
53	J25-6601	ROLLAR COLLAR (B)
54	J25-6301	ROLLAR COLLAR (C)
55	M19-6701	LINE ROLLER
56	M19-6601	ROLLAR COLLAR (D)
57	J53-7801	ROLLAR MAG COLLAR (B)
58	375-4101	ROLLER WASHER
59	M24-8201	BAIL ASSY
60	M19-6501	BAIL HOLDER PLATE
61	M19-5801	BAIL HOLDER COLLAR
62	B33-9801	BAIL HOLDER RETAINER

Key No	Part No	Description
63	J55-4901	MAGSEALED COVER PACKING
64	J78-2101	MAGSEALED COVER SCREW
65	J77-4702	MAGSEALED COVER
66	H84-2808	MAGSEALED PLATE SCREW
67	J55-3803	MAGSEALED PLATE
68	H50-2203	MAGSEALED PLATE WASHER
69	H41-2602	ONEWAY CLUCH
70	J55-3701	ONEWAY CLUCH PACKING
71	J55-4801	CLUTCH RING
72	J53-6202	CLUTCH RING COLLAR
73	J55-2203	PINION BEARING PLATE SCREW
74	J55-2101	PINION BEARING PLATE
75	G27-9602	PINION BALL BEARING (A)
76	G64-5603	PINION BEARING WASHER (A)
77	375-8502	PINION WASHER
78	Z02-6716	PINION DRIVE GEAR SET
79	H81-4902	PINION BEARING SPRING WASHER
80	E09-6501	PINION BEARING WASHER (B)
81	G53-8007	PINION BALL BEARING (B)
82	J55-2001	PINION BEARING COLLAR
83	M24-6607	BODY ASSY
84	J78-3302	MAIN SHAFT
85	G68-3301	OSCILLATING POST O RING
86		-----
87	M24-7001	OSCILLATING POST
88	G31-5302	REAR COVER WASHER
89	M24-7101	REAR COVER PACKING
90	M24-7201	REAR COVER
91	J60-9106	BAIL TRIP COLLAR SCREW
92	J71-8501	BAIL TRIP COLLAR WASHER
93	J71-8601	BAIL TRIP COLLAR O RING
94	J57-1801	BAIL TRIP COLLAR
95	J55-3605	REAR COVER SCREW
96	G31-5301	REAR COVER SCREW WASHER
97	J55-4101	DRIVE BALL BEARING O RING
98	J04-6802	DRIVE BALL BEARING (A)
99	M24-6802	SET PLATE
100	J55-1301	SET PLATE O RING
101	J55-5501	DRIVE BEARING WASHER (A)
102	J57-1305	SIDE COVER (R)
103	G39-9702	HANDLE CAP O RING
104	M19-8101	HANDLE CAP
105	J55-1401	OSCILLATING GEAR WASHER
106	J57-0401	OSCILLATING GEAR
107	G86-9601	OSCILLATING GEAR O RING
108	H12-9201	OSCILLATING GEAR BEARING WASHER
109	G68-6904	OSCILLATING GEAR BALL BEARING
110	G94-0402	OSCILLATING GEAR SCREW
111	J73-1701	DRIVE GEAR O RING (A)
112	J55-2701	DRIVE GEAR COLLAR
113	J73-1701	DRIVE GEAR O RING (B)
114	J03-0303	DRIVE BALL BEARING (B)
115	G61-3403	DRIVE BEARING WASHER (B)
116	J55-6301	SIDE COVER O RING (A)
117	J57-1501	SIDE COVER O RING (B)
118	M24-6901	SIDE COVER (L)
119	M24-9201	HANDLE ASSY

EXIGLT5000D-C Special Parts

Key No	Part No	Description
2 12	M39-1101	SPOOL ASSY (2 12)
119	M31-5901	HANDLE ASSY