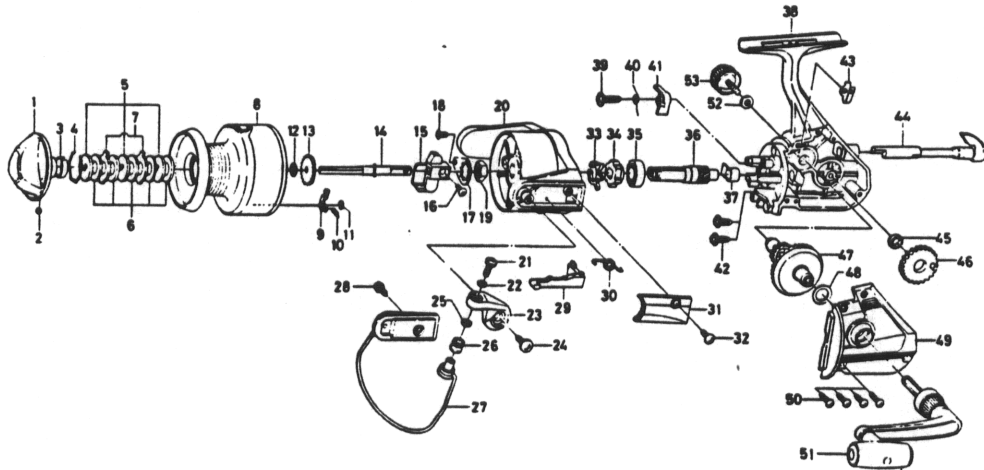


6LY268010

  
**Daiwa**  
 COMMITTED TO TOTAL QUALITY

# SPINNING REEL EL9000

Please order by parts number, not key number  
 Bitte, Best: -Nr. angeben (Nicht "key"-Nr.)  
 Veuillez indiquer le numero de la piece (Non "key" No.)



Key No. 4-11  
 6-L12-2901

**Spool assembly**

Key No.	Parts No.	Parts Name
1	6-L10-8602	Drag knob
2	6-635-4701	Click ball
3	6-B32-8701	Click leaf spring
4	6-171-7701	Drag washer retainer
5	6-L03-1301	Key washer
6	6-375-9802	Drag washer
7	6-889-9501	Eared washer
8	6-L12-3001	Spool assembly
9	6-B07-8201	Click pawl
10	6-145-2101	Click spring
11	6-320-1402	Click retainer
12	6-L11-9101	Spool washer
13	6-L11-8501	Click gear
14	6-L11-9501	Main shaft
15	6-L11-4801	Oscillating slider
16	6-351-8901	Oscillating slider screw
17	6-B02-1601	Rotor nut holding plate
18	6-L01-1702	Rotor nut holding plate screw
19	6-340-8301	Rotor nut
20	6-L11-7201	Rotor
21	6-353-9702	Line roller screw
22	6-160-8101	Lock washer
23	6-L10-5001	Bail arm
24	6-E00-7601	Bail arm screw
25	6-373-4501	Line roller washer

Key No.	Parts No.	Parts Name
26	6-250-4221	Line roller
27	6-L12-2502	Bail assembly
28	6-L01-1701	Bail trip cam screw
29	6-L11-7301	Bail trip lever
30	6-L06-7001	Bail spring
31	6-L11-5601	Bail spring cover
32	6-E36-4201	Bail spring cover screw
33	6-L07-0701	Anti-reverse pawl spring A
34	6-L09-1701	Anti-reverse ratchet
35	6-L03-6401	Ball bearing
36	6-L11-4401	Pinion gear
37	6-L00-6001	Pinion collar
38	6-L12-2202	Body assembly
39	6-L06-6501	Anti-reverse pawl screw
40	6-L06-6401	Anti-reverse pawl spring B
41	6-L07-8601	Anti-reverse pawl
42	6-L01-1601	Bearing retainer screw
43	6-E01-1801	Anti-reverse cam spring
44	6-L10-0704	Anti-reverse lever
45	6-B47-4101	Oscillating gear collar
46	6-L11-4701	Oscillating gear
47	6-L07-1701	Drive gear
48	6-371-2800	Drive gear washer
49	6-L11-5107	Side cover
50	6-B83-5001	Side cover screw
51	6-L01-2902	Handle assembly
52	6-L02-2301	Handle lock washer
53	6-L00-9102	Handle lock screw

Printed in Taiwan