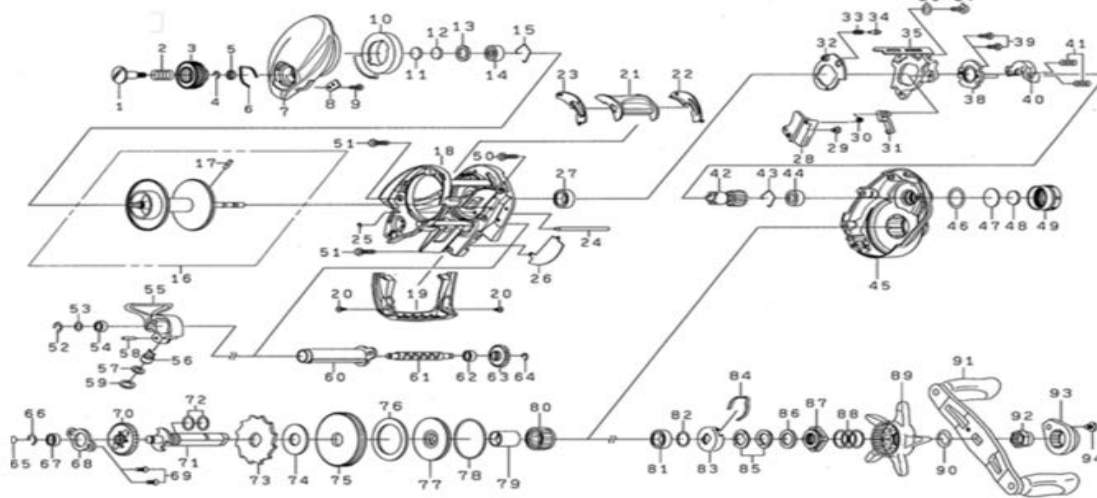


DAWA BAITCASTING REEL

CLTW80H

*Please order by parts number, not key number.



Key No	Part No	Description	Key No	Part No	Description
1	J71-6301	BRAKE DIAL SCREW	49	J73-8101	ZERO ADJUSTER KNOB
2	E16-7101	BRAKE DIAL SPRING	50	G04-0814	RS PLATE SCREW (A)
3	M16-0703	BRAKE DIAL	51	G94-5818	RS PLATE SCREW (B)
4	B33-9801	BRAKE DIAL RETAINER (A)	52	320-5901	WORM SHAFT RETAINER
5	F63-7701	BRAKE DIAL WASHER	53	B41-1702	WORM SHAFT WASHER (01MM)
6	H66-3401	BRAKE DIAL LEAF SPRING	54	G72-0001	WORM SHAFT COLLAR
7	M36-8501	LEFT SIDE PLATE	55	M14-8601	LEVELWIND
8	J84-3301	BRAKE DIAL RETAINER (B)	56	J74-0101	PAWL
9	G93-9301	BRAKE DIAL RETAINER (B) SCREW	57	M16-1301	PAWL WASHER (0.1MM)
10	M16-2401	MAGNET HOLDER	58	J74-0201	LEVELWIND PIN
11	375-7404	LS BALL BEARING WASHER (A) (0.1MM)	59	G25-2202	PAWL O RING
12	375-7411	LS BALL BEARING WASHER (B)	60	J74-0001	WORM SHIELD
13	G18-5101	LS BALL BEARING WASHER (C)	61	M04-2401	WORM SHAFT
14	G51-1501	LS BALL BEARING	62	G72-0001	WORM SHAFT COLLAR
15	F03-2201	LS BALL BEARING RETAINER	63	J69-3901	WORM SHAFT GEAR
16	M36-8601	SPOOL ASSEMBLY (16 17)	64	B33-9801	WORM SHAFT GEAR RETAINER
17	M21-2304	FRAME	65	G09-9801	GEAR SHAFT WASHER (01MM)
18	J95-6609	FRONT COVER	66	320-8002	GEAR SHAFT RETAINER
19	H53-1508	FRONT COVER SCREW	67	F64-8301	GEAR SHAFT BUSHING
20	M16-2301	CLUTCH LEVER	68	J69-3701	GEAR SHAFT PLATE
21	J95-5601	CLUTCH LEVER PLATE (R)	69	G29-7002	GEAR SHAFT PLATE SCREW
22	J95-5501	CLUTCH LEVER PLATE (L)	70	J69-3601	WORM GEAR
23	M13-4001	STABILIZER BAR	71	M37-2501	DRIVE SHAFT
24	H70-4101	STABILIZER BAR RETAINER	72	F65-7801	DRIVE SHAFT O RING
25	J97-2901	FRAME PLATE	73	H66-0901	RATCHET
26	G43-1002	CLUTCH CAM BALL BEARING	74	374-6605	DRIVE GEAR WASHER
27	J73-9101	CLUTCH TRIP LEVER PLATE (A)	42 75	Z02-6881	PINION DRIVE GEAR SET
28	H53-1508	CLUTCH TRIP LEVER PLATE (A) SCREW	76	J60-5701	ATD DRAG WASHER(B323)
29	J91-5201	CLUTCH TRIP LEVER PLATE SPRING	77	M37-2401	KEY WASHER
30	J62-2901	CLUTCH TRIP LEVER	78	J45-8101	KEY WASHER O RING
31	J73-9001	CLUTCH CAM PLATE (A)	79	J32-7701	CLUTCH RING
32	H92-8801	CLUTCH CAM PLATE PIN SPRING	80	J54-0401	ONEWAY CLUTCH
33	J05-5201	CLUTCH CAM PLATE PIN	81	G43-1002	DRIVE BALL BEARING
34	J97-2601	CLUTCH CAM	82	B55-3801	DRIVE BALL BEARING WASHER
35	M07-0001	CLUTCH CAM WASHER	83	F02-8203	CLICK BALL HOLDER
36	B36-0406	CLUTCH CAM SCREW	84	F03-2401	CLICK LEAF SPRING
37	H65-9101	CLUTCH CAM PLATE (B)	85	150-8901	DRAG SPRING WASHER
38	B03-2904	CLUTCH CAM PLATE SCREW	86	H92-9501	STAR DRAG WASHER
39	H92-9001	YOKE	87	J14-1001	DRAG METAL
40	J31-3901	YOKE SPRING	88	J01-1901	DRAG METAL SPRING
41	J31-3901	YOKE SPRING	89	J14-0012	STAR DRAG
42 75	Z02-6881	PINION DRIVE GEAR SET	90	F57-6601	HANDLE WASHER
43	H44-8401	PINION BEARING RETAINER	91	M36-9001	HANDLE ASSEMBLY
44	G43-1107	PINION BALL BEARING	92	G79-3307	HANDLE NUT
45	M36-8401	RIGHT SIDE PLATE	93	J62-5401	HANDLE LOCK PLATE
46	J27-9701	ZERO ADJUSTER KNOB O RING	94	G83-5503	HANDLE LOCK PLATE SCREW
47	J69-2001	ZERO ADJUSTER WASHER (A)			
48	B17-5503	ZERO ADJUSTER WASHER (B)			