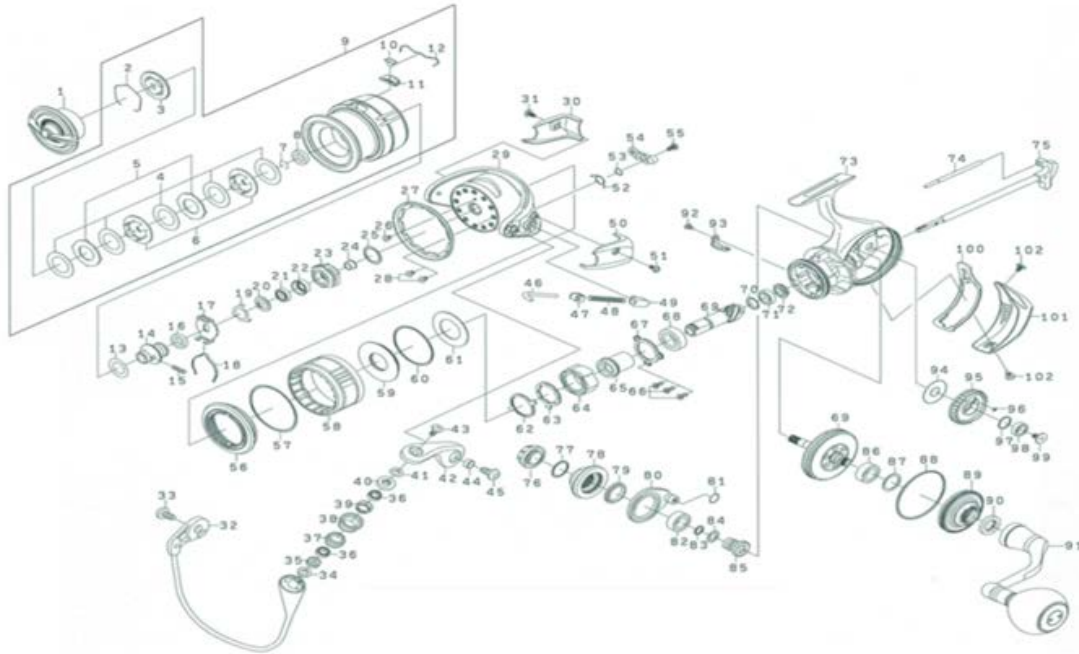


DAWA

SPINNING REEL

CERTATESWG5000-XH_6000-XH

*Please order by parts number, not key number.



Key No	Part No	Description
1	J78-4401	DRAG KNOB
2	J55-6701	DRAG WASHER RETAINER
3	J55-6601	KEY WASHER (A)
4	M35-5701	DRAG WASHER
5	J56-1202	EARED WASHER
6	M28-7101	KEY WASHER (B)
7	B35-8702	SPOOL COLLAR RETAINER
8	J54-6702	SPOOL COLLAR
9	M37-4101	SPOOL ASSY
10	J55-8001	LINE STOPPER
11	J56-8601	LINE STOPPER PLATE
12	J31-4801	LINE STOPPER SPRING
13	J54-6304	SPOOL WASHER
14	M28-5501	SPOOL METAL
15	J55-8201	SPOOL METAL SCREW
16	M28-6602	SPOOL METAL COLLAR
17	M29-2001	CLICK SPRING HOLDER
18	B74-7701	CLICK LEAF SPRING
19	G52-4801	ROTOR NUT PLATE
20	H62-1501	ROTOR NUT PACKING
21	G21-2503	ROTOR NUT BALL BEARING
22	J30-2501	ROTOR NUT BALL BEARING COLLAR
23	J30-2401	ROTOR NUT
24	M35-4201	ROTOR NUT COLLAR
25	G64-5603	ROTOR NUT WASHER
26	H02-2701	ROTOR NUT SCREW
27	J30-2301	ROTOR COLLAR
28	H02-2701	ROTOR COLLAR SCREW
29	J30-2101	ROTOR
30	J30-2201	BAIL HOLDER COVER
31	H43-1301	BAIL HOLDER COVER SCREW
32	J45-5201	BAIL
33	H43-1201	BAIL HOLDER SCREW
34	B41-1703	ROLLER WASHER (A)
35	H74-3401	ROLLER MAG COLLAR (A)
36	G68-6903	ROLLER BALL BEARING
37	H74-3701	ROLLER COLLAR (A)
38	H74-3801	LINE ROLLER
39	H74-3901	ROLLER COLLAR (B)
40	H74-4001	ROLLER MAG COLLAR (B)
41	J33-9502	ROLLER WASHER (B)
42	H96-0121	BAIL ARM
43	H74-4201	ROLLER SCREW
44	H96-2401	BAIL ARM SCREW COLLER
45	H43-1201	BAIL ARM SCREW COLLER
46	H64-0601	BAIL SPRING SHAFT
47	H57-6101	BAIL SPRING PLATE
48	H64-0701	BAIL SPRING
49	J08-9401	BAIL SPRING HOLDER
50	H99-4601	BAIL SPRING COVER
51	H43-1301	BAIL SPRING COVER SCREW
52	H41-3601	BAIL TRIP LEVER SPRING
53	J33-9502	BAIL TRIP LEVER WASHER
54	H99-4401	BAIL TRIP LEVER
55	H41-7701	BAIL TRIP LEVER SCREW
56	J30-1801	MAGSEALED COVER RING

Key No	Part No	Description
57	H17-6501	MAGSEALED COVER O RING
58	J30-1704	MAGSEALED COVER
59	H61-9301	MAGSEALED PLATE
60	H45-2801	MAGSEALED PLATE O RING
61	H61-9201	MAGSEALED PLATE WASHER
62	H69-0201	ONEWAY CLUTCH PLATE (A)
63	J54-1901	ONEWAY CLUTCH PLATE (B)
64	G31-4501	ONEWAY CLUTCH
65	H78-2302	CLUTCH RING
66	E13-4508	PINION BEARING PLATE SCREW
67	G52-2901	PINION BEARING PLATE
68	G52-2803	PINION BALL BEARING (A)
69	Z02-6576	PINION DRIVE GEAR SET
70	G57-8501	PINION BEARING SPRING WASHER
71	G52-2705	PINION BALL BEARING (B)
72	H61-8001	PINION BALL BEARING COLLAR
73	M28-5701	BODY
74	H63-9301	OSCILLATING POST
75	M28-5801	MAIN SHAFT
76	J80-2101	HANDLE CAP
77	G67-2401	HANDLE CAP O RING
78	M28-6401	SIDE COVER (R)
79	M28-6301	SET PLATE COLLAR
80	J30-0305	SET PLATE
81	J30-0401	SET PLATE O RING
82	G52-3403	DRIVE BALL BEARING (A)
83	J18-5701	DRIVE GEAR O RING
84	G80-0701	IDLE GEAR O RING
85	J30-0501	IDLE GEAR
86	G52-3403	DRIVE BALL BEARING (B)
87	G64-5603	DRIVE BALL BEARING WASHER
88	H50-2602	SIDE COVER (L) O RING
89	M28-6501	SIDE COVER (L)
90	H73-0801	SIDE COVER (L) PACKING
91	M35-7501	HANDLE
92	H45-5407	BAIL TRIP COLLAR SCREW
93	H90-6201	BAIL TRIP COLLAR
94	G64-4203	OSCILLATING GEAR WASHER
95	J30-4201	OSCILLATING GEAR
96	M42-6701	OSCILLATING GEAR O RING
97	G52-2103	OSCILLATING GEAR BEARING WASHER
98	G46-7102	OSCILLATING GEAR BALL BEARING
99	H27-2202	OSCILLATING GEAR SCREW
100	J30-1901	REAR COVER PACKING
101	J30-2001	REAR COVER
102	H75-3302	REAR COVER SCREW
200	H74-4801	HANDLE KNOB SPRING WASHER
201	B41-1703	HANDLE KNOB WASHER
202	G46-9007	HANDLE KNOB BALL BEARING
203	H08-9105	HANDLE KNOB
204	B67-9308	HANDLE KNOB SCREW
206	J08-4501	HANDLE KNOB CAP

CERTATESWG6000-XH Special Parts

Key No	Part No	Description
9	M37-4501	SPOOL ASSY