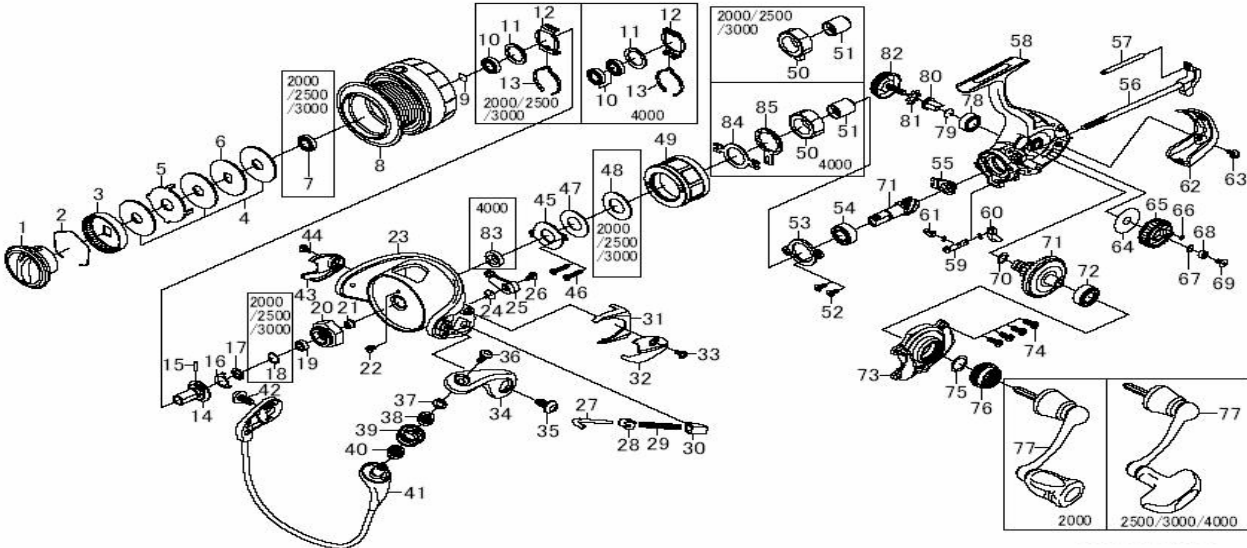


Please order by parts number, not key number
 Veuillez indiquer le numéro de la pièce (Non "Key" No.)



SPINNING REEL BALLISTIC 2000SH/2500SH/3000SH/4000SH



Key No.	PARTS No.	Parts Name	BALLISTIC 2000SH	BALLISTIC 2500SH	BALLISTIC 3000SH	BALLISTIC 4000SH
1	H76-3801	Drag Knob	H76-3801	H76-0101	H76-0101	H76-4501
2	F74-2501	Drag Washer Retainer	F74-2501	F74-2501	F74-2501	F71-1001
3	F90-8701	Drag Knob Click Plate	F90-8701	F90-8701	F90-8701	F89-5302
4	F63-5001	Drag Washer	F63-5001	H76-1101	H76-1101	F62-7101
5	F63-5201	Eared Washer	F63-5201	H76-1301	H76-1301	F75-5701
6	H62-7701	Key Washer	H62-7701	H76-1201	H76-1201	F64-4702
7	E30-6801	Ball Bearing (A)	E30-6801	E30-6801	E30-6801	-
8	H41-6001	Spool Assembly	H41-6001	H41-6001	H41-6001	H76-4301
9	G47-2401	Bearing Retainer (A)	G47-2401	G47-2401	G47-2401	G52-5101
10	E30-6801	Ball Bearing (B)	E30-6801	E30-6801	E30-6801	B86-1704
11	F62-5500	Washer (A)	F62-5500	F62-5500	F62-5500	F64-3500
12	H41-6101	Click Leaf Spring Molder	H41-6101	H41-6101	H41-6101	G69-4001
13	H41-6102	Spool Click Leaf Spring	H41-6102	H41-6102	H41-6102	F70-9002
14	H60-1301	Spool Metal	H60-1301	H60-1301	H60-1301	H64-1501
15	G37-5001	Pin	G37-5001	G37-5001	G37-5001	G22-4101
16	H41-5501	Bearing Retainer (B)	H41-5501	H41-5501	H41-5501	H60-5001
17	H41-5701	Packing	H41-5701	H41-5701	H41-5701	-
18	G46-6103	Washer (B)	G46-6103	G46-6103	G46-6103	G46-7101
19	G46-6201	Ball Bearing (C)	G46-6201	G46-6201	G46-6201	H73-0901
20	H44-4501	Rotor Nut	H44-4501	H44-4501	H44-4501	H60-4902
21	H41-5501	Collar (A)	H41-5501	H41-5501	H41-5501	H02-2701
22	H02-2701	Screw (A)	H02-2701	H02-2701	H02-2701	H64-0203
23	H44-3204	Rotor	H44-3204	H41-3509	H41-3509	H41-3501
24	H44-3301	Ball Trip Lever Spring	H44-3301	H41-3501	H41-3501	H64-0001
25	H44-3401	Ball Trip Lever	H44-3401	H41-3701	H41-3701	H41-7701
26	H41-7701	Screw (B)	H41-7701	H41-7701	H41-7701	H64-0601
27	H44-3601	Ball Spring Shaft	H44-3601	H41-4101	H41-4101	H57-6101
28	H57-6101	Ball Spring Plate	H57-6101	H57-6101	H57-6101	H64-0701
29	H44-3701	Ball Spring	H44-3701	H44-3701	H44-3701	H41-4301
30	H41-4301	Ball Spring Holder	H41-4301	H41-4301	H41-4301	H64-0803
31	H44-3704	Cover (C)	H44-3704	H41-4007	H41-4007	H64-0902
32	H44-3801	Cover (A)	H44-3801	H41-4601	H41-4601	H43-1301
33	H43-1301	Cover (B)	H43-1301	H43-1301	H43-1301	H53-3805
34	H41-4406	Screw (C)	H41-4406	H43-1201	H43-1201	H43-1201
35	H43-1201	Ball Arm	H43-1201	H69-7701	H69-7701	H69-7701
36	H59-7701	Screw (D)	H59-7701	H41-5201	H41-5201	H41-5201
37	H41-5201	Collar (B)	H41-5201	H41-5201	H41-5201	G68-6703
38	H41-5201	Collar (C)	H41-5201	H41-5201	H41-5201	H41-5201
39	G68-6703	Line Roller	G68-6703	H41-5201	H41-5201	H41-5201
40	H41-5201	Collar (D)	H41-5201	H41-5201	H41-5201	H43-1201
41	H41-5201	Collar (E)	H41-5201	H43-1201	H43-1201	H41-5101
42	H43-1201	Ball Assembly	H43-1201	H43-1201	H43-1201	H43-1301
43	H44-4301	Screw (F)	H44-4301	H43-1301	H43-1301	H43-1301
44	H43-1301	Cover (B)	H43-1301	H59-6501	H59-6501	H59-6501
45	H43-1301	Screw (G)	H43-1301	H60-1001	H60-1001	H60-1001
46	H59-6501	Cover Retainer	H59-6501	H60-0901	H60-0901	H60-0901
47	H60-1001	Screw (H)	H60-1001	H41-2601	H41-2601	H41-2601
48	H60-0901	Washer (C)	H60-0901	H61-5501	H61-5501	H61-5501
49	H60-1101	Washer (D)	H60-1101	H41-2601	H41-2601	H41-2601
50	H41-2601	Roller Clutch	H41-2601	H61-5501	H61-5501	H61-5501
51	H61-5501	Spacing Sleeve	H61-5501	G99-7301	G99-7301	G99-7301
52	G99-7301	Screw (I)	G99-7301	H44-2201	H44-2201	H44-2201
53	H44-2201	Bearing Retainer (C)	H44-2201	G46-7301	G46-7301	G46-7301
54	G46-7301	Ball Bearing (D)	G46-7301	H59-6401	H59-6401	H59-6401
55	H59-6401	Collar (E)	H59-6401	H59-6001	H59-6001	H59-6001
56	H62-9201	Main Shaft	H62-9201	H59-6301	H59-6301	H59-6301
57	H59-6301	Stabilizer Bar	H59-6301	H75-9501	H75-9501	H75-9501
58	H75-9501	Body	H75-9501	H59-5501	H59-5501	H59-5501
59	H59-5501	Anti-Reverse Cam	H59-5501	H59-5401	H59-5401	H59-5401
60	H59-5401	Anti-Reverse Lever	H59-5401	H59-7801	H59-7801	H59-7801
61	H59-7801	Anti-Reverse Cam Spring	H59-7801	H59-8102	H59-8102	H59-8102
62	H59-8102	Rear Cover	H59-8102	H59-8201	H59-8201	H59-8201
63	H59-8201	Screw (J)	H59-8201	H59-5701	H59-5701	H59-5701
64	H59-5701	Washer (E)	H59-5701	H72-7901	H72-7901	H72-7901
65	H72-7901	Oscillating Gear	H72-7901	H12-9200	H12-9200	H12-9200
66	H12-9200	"O" Ring (A)	H12-9200	G46-9002	G46-9002	G46-9002
67	G46-9002	Washer (F)	G46-9002	G99-7001	G99-7001	G99-7001
68	G99-7001	Ball Bearing (E)	G99-7001	G67-0501	G67-0501	G67-0501
69	G67-0501	"O" Ring (B)	G67-0501	Z02-0653	Z02-0653	Z02-0653
70	Z02-0653	Pinion Gear + Drive Gear	Z02-0653	G46-7301	G46-7301	G46-7301
71	G46-7301	Ball Bearing (F)	G46-7301	H75-9701	H75-9701	H75-9701
72	H75-9701	Side Cover	H75-9701	H59-7400	H59-7400	H59-7400
73	H59-7400	Washer (G)	H59-7400	G61-3400	G61-3400	G61-3400
74	G61-3400	Screw (M)	G61-3400	H59-7801	H59-7801	H59-7801
75	H59-7801	Handle Assembly	H59-7801	H75-9801	H75-9801	H75-9801
76	H75-9801	Collar (G)	H75-9801	G47-2401	G47-2401	G47-2401
77	G47-2401	Bearing Retainer (D)	G47-2401	F72-1001	F72-1001	F72-1001
78	F72-1001	Collar (F)	F72-1001	160-8101	160-8101	160-8101
79	160-8101	Washer (H)	160-8101	H61-3302	H61-3302	H61-3302
80	H61-3302	Handle Screw	H61-3302	-	-	-
81	-	Collar (G)	-	-	-	-
82	-	Clutch Cam Retainer	-	-	-	-
83	-	Clutch Cam	-	-	-	-
84	-	-	-	-	-	-
85	-	-	-	-	-	-