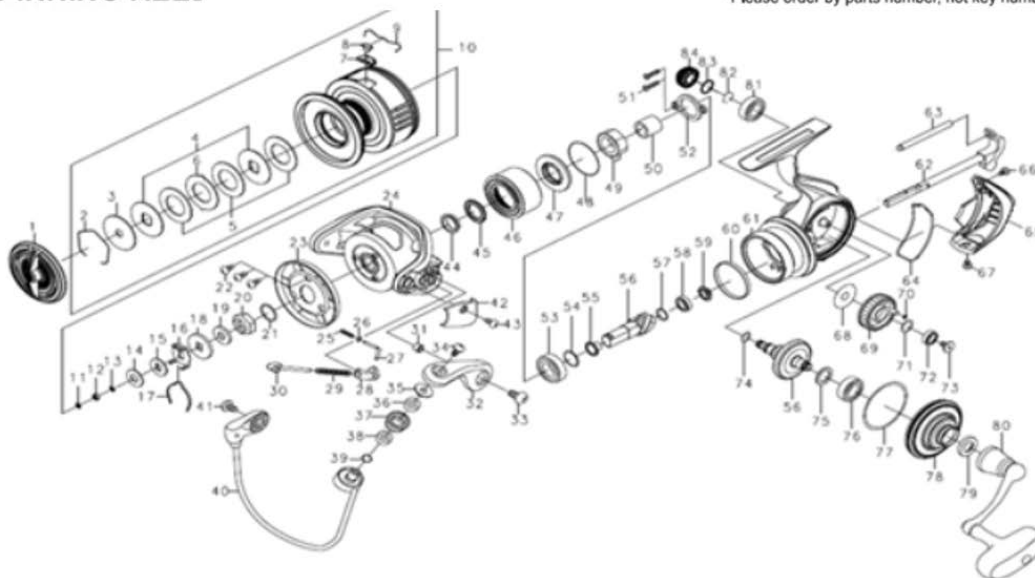


# DAIWA SPINNING REEL

## BGMQ5000D-H/BGMQ6000D-H

\*Please order by parts number, not key number.



Key No	Part No	Description
1	J96-1701	DRAG KNOB
2	170-4101	DRAG RING
3	J97-9901	DRAG RATCHET
4	J57-7501	DRAG DISK WASHER
5	M15-0501	ATD DRAG WASHER ( 1 pack - 3 pcs )
6	J57-7301	DRAG LIP WASHER
7	J56-8601	LINE STOPPER PLATE
8	J55-8001	LINE STOPPER
9	J31-4801	LINE STOPPER SPRING
10	M03-5701	SPOOL ASSY
11	M00-5501	SPOOL WASHER(A)
12	G46-6206	SPOOL BALL BEARING
13	E09-6505	SPOOL WASHER(B)
14	F05-0104	SPOOL WASHER( C -03mm )
15	F05-0002	SPOOL WASHER(D)
16	M06-9601	CLICK HOLDER
17	B74-7701	CLICK LEAF SPRING
18	F04-9901	SPOOL WASHER(D)
19	H99-5201	ROTOR NUT PACKING
20	M05-7201	ROTOR NUT
21	G16-2401	ROTOR NUT O RING
22	H41-7701	ROTOR COVER SCREW
23	J96-4501	ROTOR COVER
24	J96-1301	ROTOR
25	H62-0401	ROTOR BRAKES SPRING
26	G68-5401	ROTOR BRAKES SPRING WASHER
27	H62-0301	ROTOR BRAKES SHAFT
28	H62-0501	ARM LEVER SPRING COLLAR
29	J97-0301	ARM LEVER SPRING
30	G01-7504	ARM LEVER SHAFT
31	H94-5501	ARM LEVER SCREW COLLAR
32	J96-2402	ARM LEVER
33	M05-6801	ARM LEVER SCREW
34	F60-8901	ROLLER SCREW
35	J97-2501	ROLLER COLLAR(A)
36	J96-4901	ROLLER COLLAR(B)
37	J18-6602	LINE ROLLER
38	J96-4801	ROLLER COLLAR(C)
39	E09-6502	ROLLER WASHER(03mm)
40	J96-9501	BAIL ASSY
42	J96-4401	ARM LEVER COVER
43	H50-3901	ARM LEVER COVER SCREW
44	M05-6901	SEALED CAP COLLAR
45	G16-2301	SEALED CAP PACKING

Key No	Part No	Description
46	J96-1601	SEALED CAP
47	J96-1401	SEALED CAP PLATE
48	J96-1501	SEALED CAP O RING
49	J30-9101	ONE WAY CLUTCH
50	M05-6702	CLUTCH RING
51	J00-0901	BEARING PLATE SCREW
52	J02-0801	BEARING PLATE
53	G52-2802	PINION BALL BEARING ( A )
54	371-2801	PINION BEARING ( A ) WASHER01mm
55	M05-7101	PINION BEARING ( A ) COLLAR
56	Z02-5299	PINION + DRIVE GEAR UNIT
57	G57-2501	PINON BEARING ( B ) WASHER
58	G46-7102	PINON BALL BEARING ( B )
59	J42-8101	PINION BEARING ( B ) COLLAR
60	J96-4001	SEALED CAP RING
61	M06-9801	BODY ASSY
62	J96-0201	MAIN SHAFT ASSY
63	H61-4301	OSHRATING POST
64	J96-0901	REAR CAP PACKING
65	J96-1001	REAR CAP
66	M05-6601	REAR CAP SCREW(A)
67	M05-6602	REAR CAP SCREW(B)
68	G64-4201	OSCILATE GEAR WASHER
69	G64-4302	OSCILATE GEAR
70	B85-3101	OSCILATE GEAR O RING
71	G52-2103	OSCILATE BEARING WASHER01mm
72	G46-7105	OSCILATE GEAR BALL BEARING
73	H27-2202	OSCILATE SCREW
74	G64-5301	DRIVE O RING
75	373-7808	DRIVE BEARING WASHER01mm
76	G52-3405	DRIVE BALL BEARING ( A )
77	H50-2602	BODY COVER PACKING
78	J96-0801	BODY COVER
79	H73-0801	HANDLE PACKING
80	M05-7701	HANDLE ASSY
81	B86-1704	DRIVE BALL BEARING ( B )
82	G52-5101	DRIVE BEARING RING
83	G67-2401	HANDLE CAP O-RING
84	J96-4101	HANDLE CAP

### BGMQ6000D-H Special Parts

Key No	Part No	Description
10	J96-4601	SPOOL ASSY
61	M05-6401	BODY ASSY