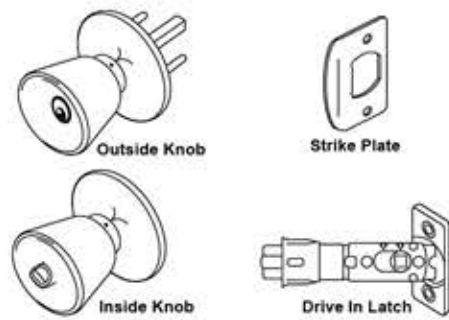


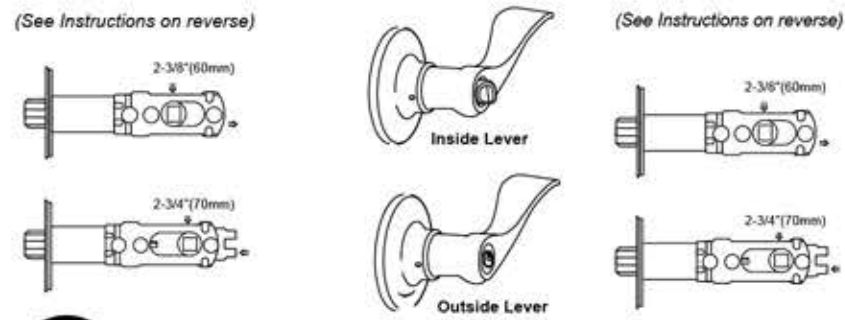
# INSTALLATION INSTRUCTIONS FOR TUBULAR KNOB AND LEVER HANDLE LOCK SETS

FOR KEYED ENTRY, INTERIOR LOCKING, AND INTERIOR NON-LOCKING KNOB AND LEVER HANDLE

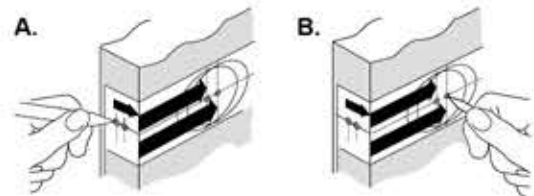
## Tubular Knob



## Lever Handle Lock set

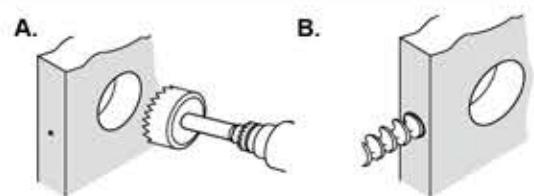


### 1. Mark Door



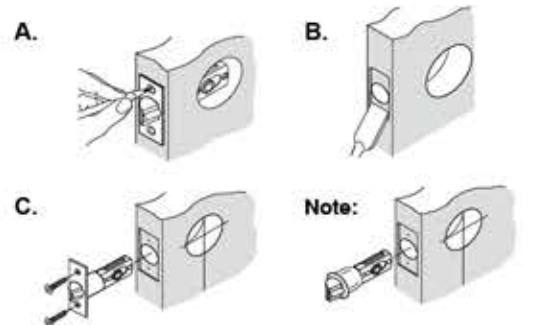
- A. Start 38" (965mm) from floor. Fold and apply template to high edge of door.
- B. Mark center hole on door face through guide on template for 2-3/8" (60mm) or 2-3/4" (70mm) backset.

### 2. Drill Holes



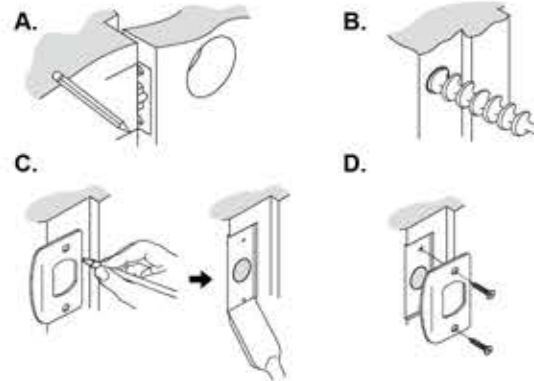
- A. Drill 2-1/8" (54mm) hole through door face as marked for lock set.
- B. Drill 1" (25mm) hole in center of door edge for latch.

### 3. Install Latch & Select Backset



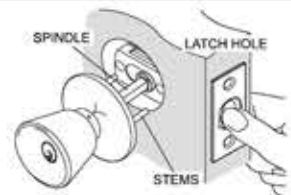
- A. Insert latch in hole keeping it parallel to face of door. Mark outline and remove latch.
  - B. Chisel 1/8" (3mm) deep or until latch face is flush with door edge.
  - C. Insert latch and tighten screws.
- Note:** For drive in latch, drill 31/32" (24.6mm) hole and press latch until it is flush with door edge.

### 4. Install Strike



- A. Mark template from edge of jamb and locate strike opening.
- B. Drill 1" (25mm) hole 1/2" (13mm) deep in door jamb on center line of screws.
- C. Outline outside edges of strike. Chisel 1/6" (4mm) deep for strike or until flush.
- D. Install strike and tighten screws.

### 5. Install Exterior Mechanism

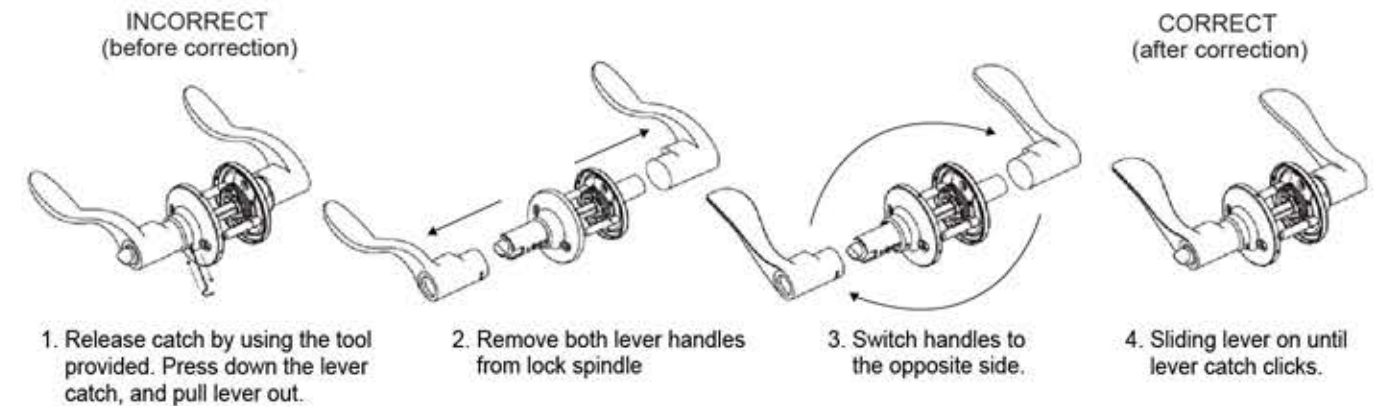


- A. Insert knob with spindle into latch, making certain that stems are positioned correctly through latch holes.
- B. Install interior knob and secure with supplied screws.



## REVERSE LEVER INSTRUCTIONS

After installing the handle in the correct right or left position, verify if the lever is installed correctly. If not please follow these simple steps.



## HOW TO ADJUST A SQUARE SPINDLE LATCH

