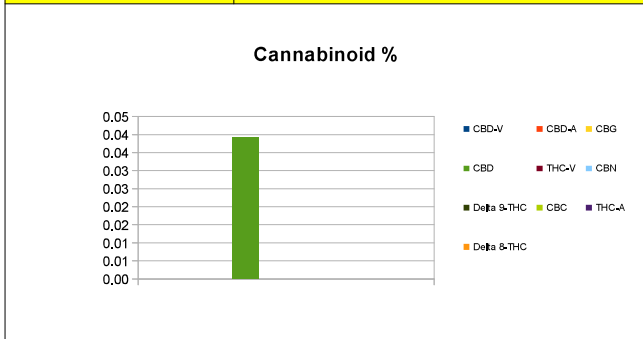



Sample Information	
Sample Identification	<b>New World CBD Sleep Drink</b>
Laboratory Number	2018006840 DUP
Batch Number	<b>Batch 2</b>
Matrix	<b>Medible</b>
Analyzed Date	05/23/18
Extraction Date	05/23/18
Cannabinoid (HPLC)	mg/mL
Compound	mg /Bottle
%	
CBD-V	0.00
CBD-A	0.00
CBG	0.00
CBD	0.04
THC-V	0.00
CBN	0.00
Delta 9-THC	0.00
CBC	0.00
THC-A	0.00
Delta 8-THC	0.00
Cannabinoids Total	
<b>Max Active THC</b>	<b>0.00</b>
<b>Max Active CBD</b>	<b>0.04</b>
<b>T. Active Cannabinoids</b>	<b>0.04</b>
<b>Total Cannabinoids</b>	<b>0.04</b>

Max Active Ratios	
N/A	:1 CBD to THC
0.0	:1 THC to CBD



**Sample Image**

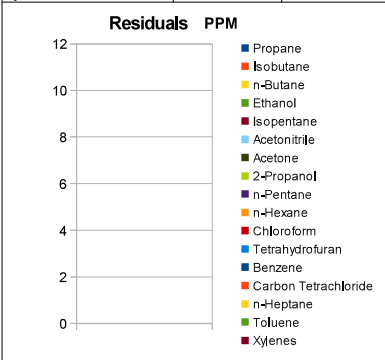


**Micro Visual:** NOT TESTED

**Percent Moisture:** NOT TESTED



RS (GCMS-MS)	PPM	RL
Compound		
Propane	NT	5.0
Isobutane	NT	5.0
n-Butane	NT	5.0
Ethanol	NT	5.0
Isopentane	NT	5.0
Acetonitrile	NT	5.0
Acetone	NT	50.0
2-Propanol	NT	5.0
n-Pentane	NT	5.0
n-Hexane	NT	5.0
Chloroform	NT	5.0
Tetrahydrofuran	NT	5.0
Benzene	NT	5.0
Carbon Tetrachloride	NT	5.0
n-Heptane	NT	5.0
Toluene	NT	5.0
Xylenes	NT	10.0



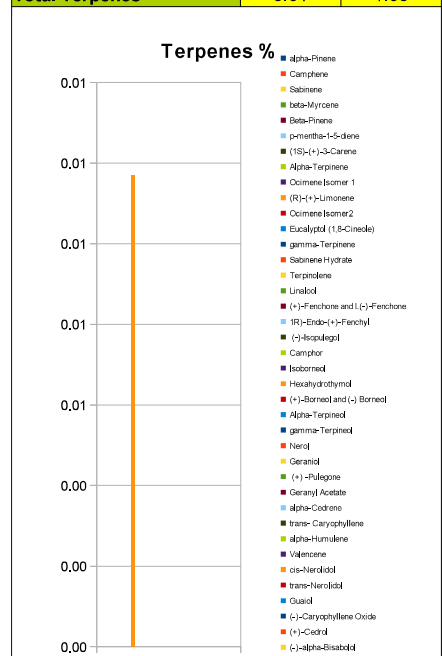
<b>mL/bottle</b>	88
<b>mg THC/bottle</b>	0
<b>mg CBD/bottle</b>	3.45
<b>(mg) total cannabinoids/bottle</b>	3.45

Metals	PPM	RL
Compound		
Lead	NT	0.010
Arsenic	NT	0.010
Cadmium	NT	0.010
Mercury	NT	0.001

RL=Reporting Limit  
NA=Not Applicable  
NT=Not Tested



Terpene (GC-MS)	mg/mL	mg/Bottle
Compound		
alpha-Pinene	0.00	0.00
Camphene	0.00	0.00
Sabinene	0.00	0.00
beta-Myrcene	0.00	0.00
Beta-Pinene	0.00	0.00
p-mentha-1-5-diene	0.00	0.00
(1S)-(+)-3-Carene	0.00	0.00
Alpha-Terpinene	0.00	0.00
Ocimene Isomer 1	0.00	0.00
(R)-(+)-Limonene	0.01	1.03
Ocimene Isomer2	0.00	0.00
Eucalyptol (1,8-Cineole)	0.00	0.00
gamma-Terpinene	0.00	0.00
Sabinene Hydrate	0.00	0.00
Terpinolene	0.00	0.00
Linalool	0.00	0.00
(+)-Fenchone and L(-)-Fenchone	0.00	0.00
1R)-Endo-(+)-Fenchyl	0.00	0.00
(-)-Isopulegol	0.00	0.00
Camphor	0.00	0.00
Isoborneol	0.00	0.00
Hexahydrothymol	0.00	0.00
(+)-Borneol and (-) Borneol	0.00	0.00
Alpha-Terpineol	0.00	0.00
gamma-Terpineol	0.00	0.00
Nerol	0.00	0.00
Geraniol	0.00	0.00
(+) -Pulegone	0.00	0.00
Geranyl Acetate	0.00	0.00
alpha-Cedrene	0.00	0.00
trans- Caryophyllene	0.00	0.00
alpha-Humulene	0.00	0.00
Valencene	0.00	0.00
cis-Nerolidol	0.00	0.00
trans-Nerolidol	0.00	0.00
Guaiol	0.00	0.00
(-)-Caryophyllene Oxide	0.00	0.00
(+)-Cedrol	0.00	0.00
(-)-alpha-Bisabolol	0.00	0.00
<b>Total Terpenes</b>	<b>0.01</b>	<b>1.03</b>



Chemist: JW