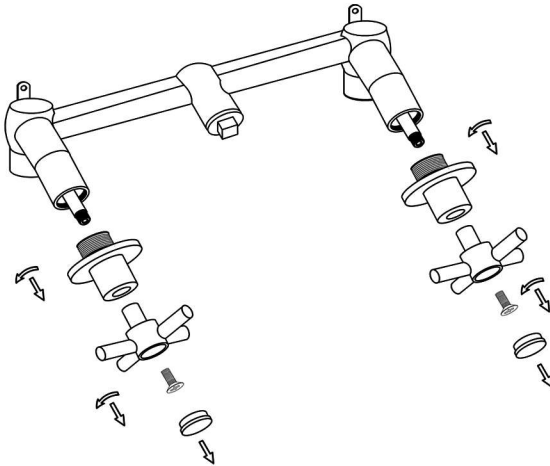


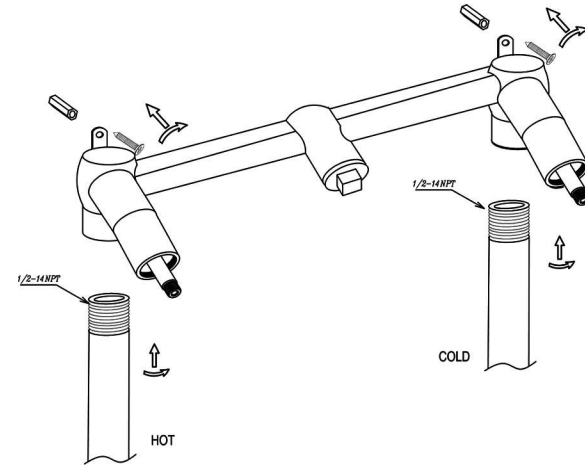
Faucet Installation

A



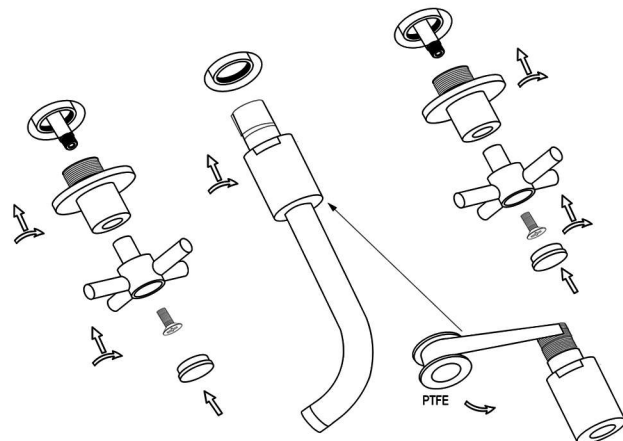
1. Remove the handles and decorative covers to avoid the damage which caused by knock during the installation.

B



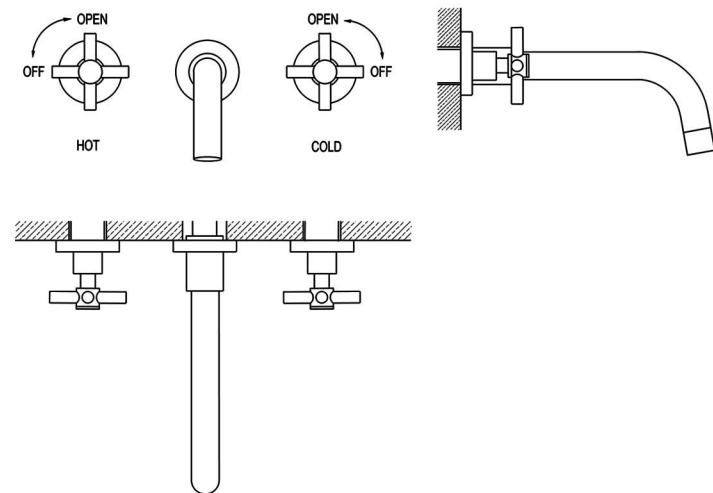
2. Fix the valve body to the reserved water pipe with 1/2-14NPT thread in the wall, connect the hot and cold inlet to the valve body, and then test for the tightness

C



3. Install the decorative cover, handles, handle covers and outlet nozzle on the valve body in turn, after fixing the valve body and restore wall trim.(The thread which connecting the outlet nozzle to the valve body should be twined with Teflon tape to prevent water leakage.)

D



4. The decorative cover needs to be close to the wall, and the outlet is straight down after correct installation like the above figure.